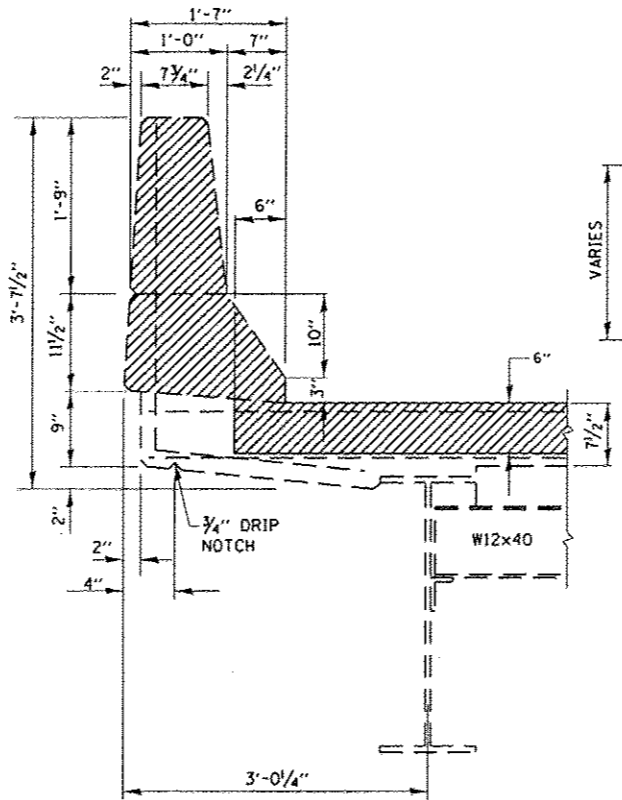
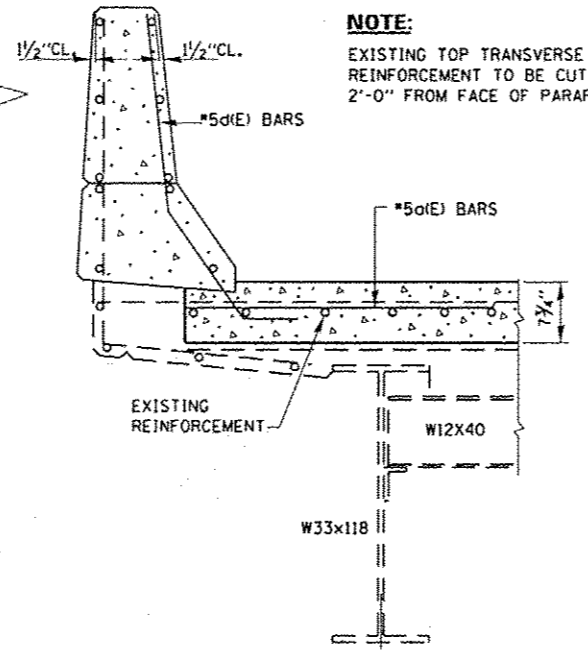


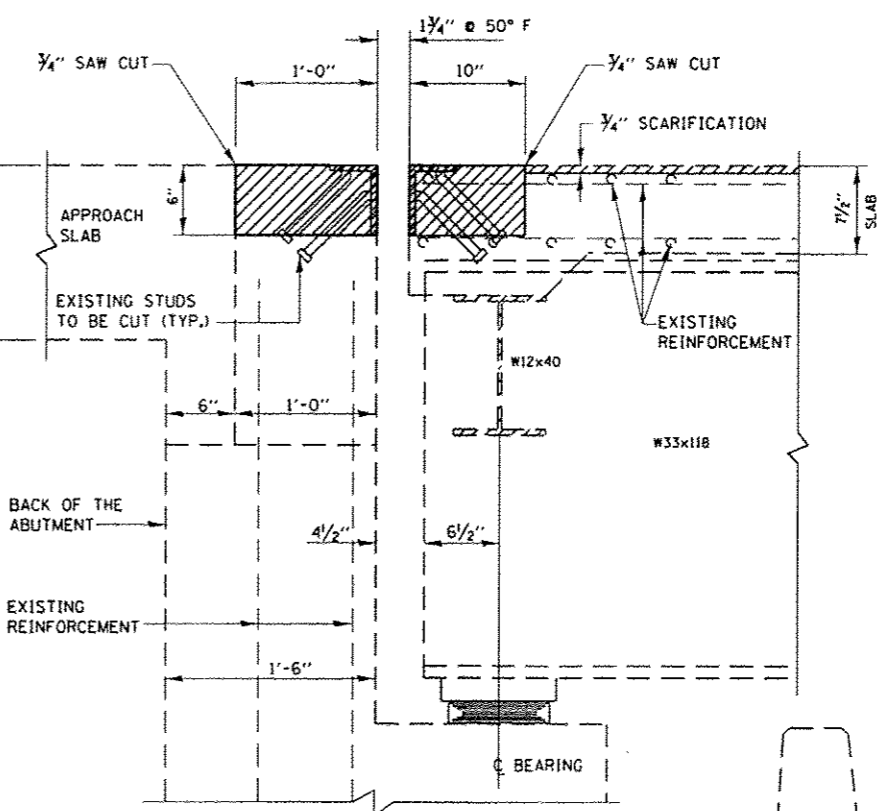
**EXPANSION JOINT PLAN
AT EAST AND WEST ABUTMENTS**



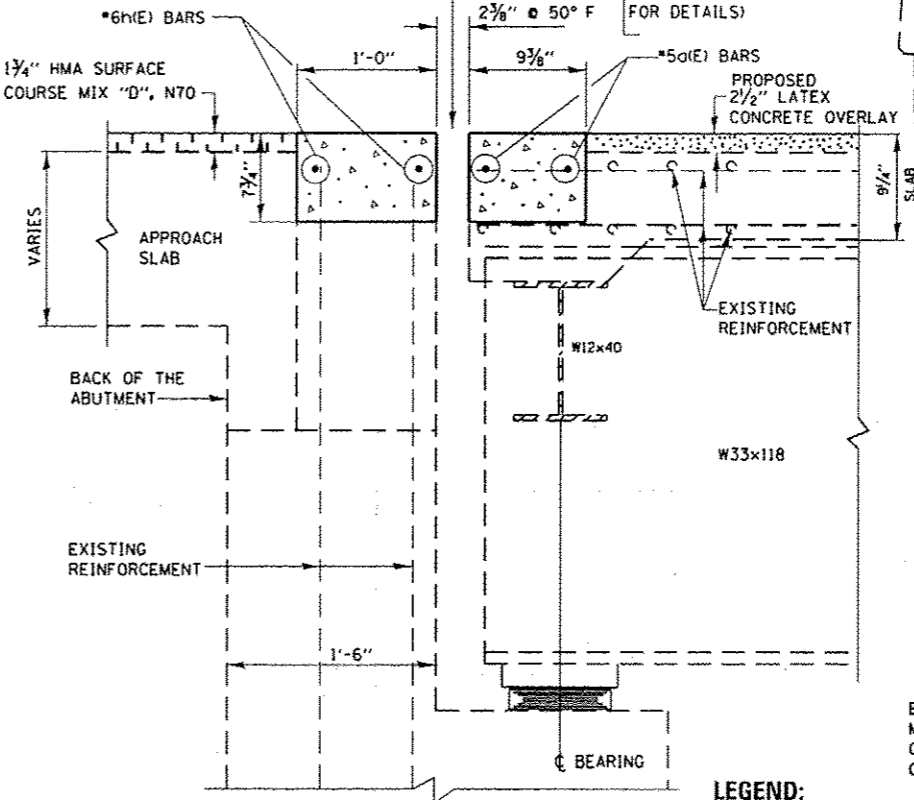
**SECTION B-B
(EXISTING)**



**SECTION B-B
(PROPOSED)**



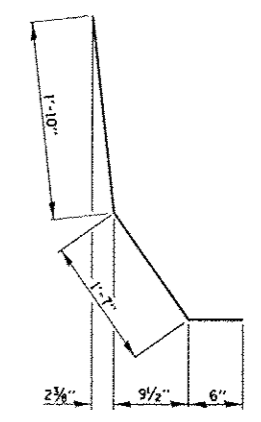
**SECTION A-A
(EXISTING)**



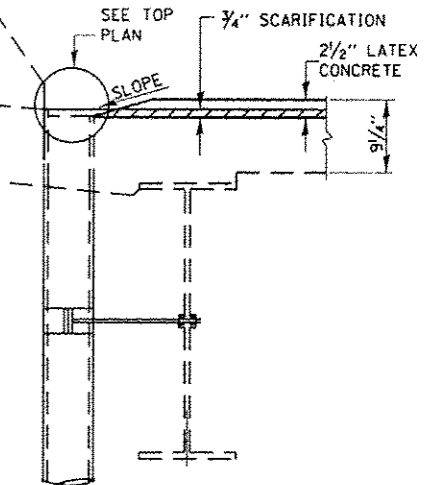
**SECTION A-A
(PROPOSED)**

BILL OF MATERIALS

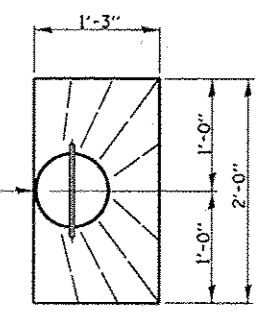
BAR	NO.	SIZE	LENGTH	SHAPE	
o(E)	8	#5	32'-3"		
d(E)	16	#5	3'-11"		
h(E)	8	#6	32'-3"		
REINFORCEMENT BARS (EPOXY COATED)				POUND	725
CONCRETE REMOVAL				CU.YD.	5.1
CONCRETE SUPERSTRUCTURE				CU.YD.	6.1
BAR SPLICERS				EACH	8



BAR d(E)



**SECTION C-C
(PROPOSED)**



TOP PLAN

LEGEND:
 HATCHED AREA INDICATES CONCRETE REMOVAL

NOTE:
 EXISTING TOP TRANSVERSE REINFORCEMENT TO BE CUT 2'-0" FROM FACE OF PARAPET