

**PLAN
EAST APPROACH SLAB**

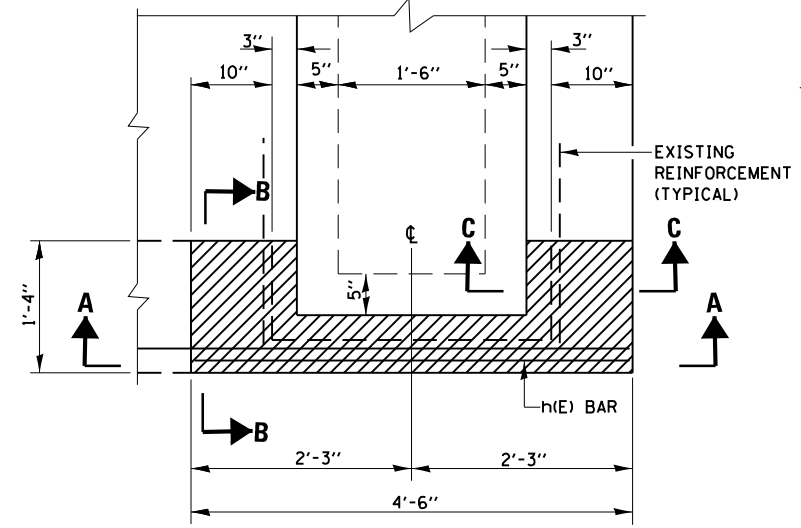
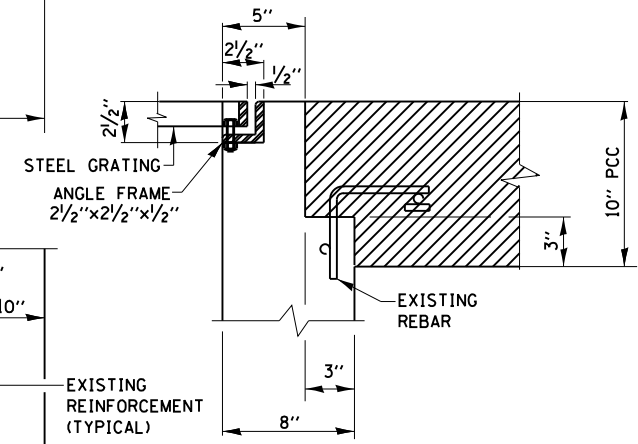
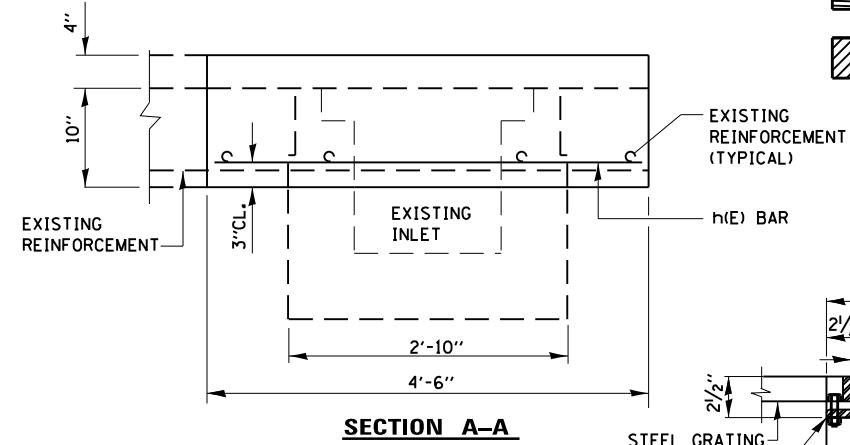
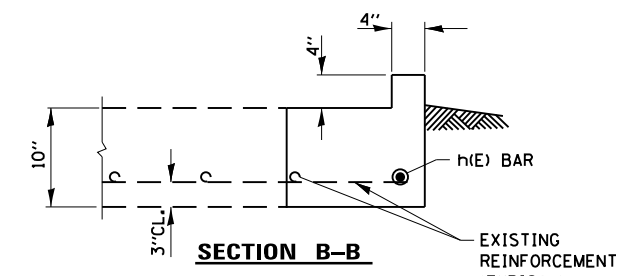
BILL OF MATERIALS

BAR	NO.	SIZE	LENGTH	SHAPE
h(E)	1	#7	4'-2"	—

BILL OF MATERIALS

ITEM	UNIT	QUANTITY
APPROACH SLAB REPAIR (PARTIAL DEPTH)	SO. YD.	3
APPROACH SLAB REPAIR (FULL DEPTH)	SO. YD.	17
FRAMES AND GRATES TO BE ADJUSTED	EACH	2
STORM SEWER TO BE CLEANED, 12"	FOOT	45
DRAINAGE STRUCTURES TO BE CLEANED	EACH	2
CONCRETE REMOVAL	CU. YD.	0.1
CONCRETE SUPERSTRUCTURE	CU. YD.	0.13
REINFORCEMENT BARS	POUND	10

- LEGEND:**
- APPROACH SLAB REPAIR (FULL DEPTH)
 - APPROACH SLAB REPAIR (PARTIAL DEPTH)
 - INLET BOX TO BE CLEANED
FRAMES AND GRATES TO BE ADJUSTED
 - GRADING AND SHAPING
DITCHES (SEE ROADWAY PLANS)
 - CONCRETE REMOVAL AND
CONCRETE SUPERSTRUCTURE
SEE SHEET 2 OF 9



NOTE:
HATCHED AREA INDICATES
CONCRETE REMOVAL AND
CONCRETE SUPERSTRUCTURE

FILE NAME =	USER NAME = gorenautab	DESIGNED - MVT	REVISED -
et:\pwork\pwork\gorenautab\d0101671\022-0022.dgn		DRAWN - MVT	REVISED -
		CHECKED -	REVISED -
		DATE - 12-20-2011	REVISED -

**STATE OF ILLINOIS
DEPARTMENT OF TRANSPORTATION**

ILL 38 (ROOSEVELT ROAD) AT WEST BRANCH DUPAGE RIVER

EAST APPROACH SLAB DETAILS

S.N. 022-0022

SCALE: SHEET NO. 9 OF 9 SHEETS STA. TO STA.

F.A.P. RTE.	SECTION	COUNTY	TOTAL SHEETS	SHEET NO.
347	2011-067-1	DuPAGE	29	13
CONTRACT NO. 60P86			ILLINOIS FED. AID PROJECT	