

F.A.P. RTE.	SECTION	COUNTY	TOTAL SHEETS	SHEET NO.
846	K-29-A-BR-1	WILL	55	1
FED. ROAD DIST. NO. 1	ILLINOIS	CONTRACT NO. 60R63		

STATE OF ILLINOIS
DEPARTMENT OF TRANSPORTATION
DIVISION OF HIGHWAYS
PROPOSED
HIGHWAY PLANS

F.A.P. RTE. 846 / ILLINOIS ROUTE 53 (BALTIMORE AVENUE)
SECTION: K-29-A-BR-1

OVER KANKAKEE RIVER
BRIDGE DECK OVERLAY AND BRIDGE JOINT REPAIR
COUNTY: WILL
C-91-196-12



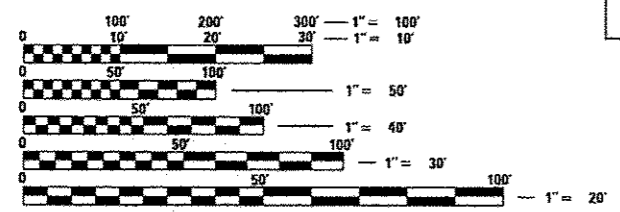
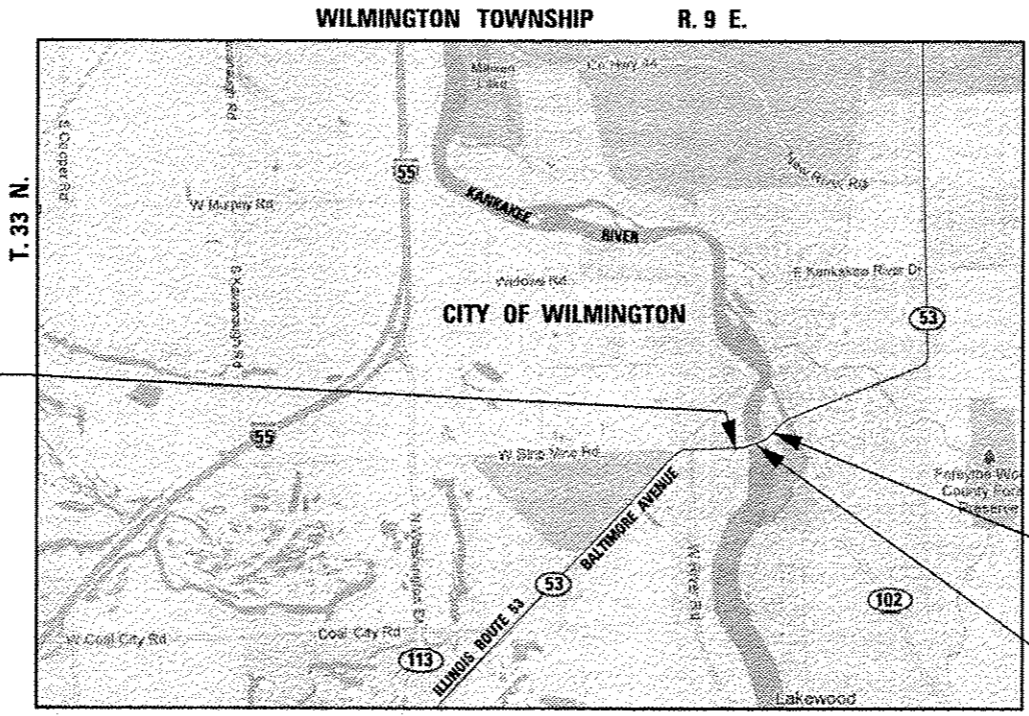
FOR INDEX OF SHEETS, SEE SHEET NO. 2

FUNCTIONAL CLASSIFICATION: OTHER PRINCIPLE ARTERIAL

2011 ADT = 8,100
DESIGN SPEED: 30 M.P.H.
SPEED LIMIT: 30 M.P.H.

PROJECT LOCATED IN THE CITY OF WILMINGTON

PROJECT ENDS STA. 123 + 02



FULL SIZE PLANS HAVE BEEN PREPARED USING STANDARD ENGINEERING SCALES. REDUCED SIZED PLANS WILL NOT CONFORM TO STANDARD SCALES. IN MAKING MEASUREMENTS ON REDUCED PLANS, THE ABOVE SCALES MAY BE USED.

J.U.L.I.E.
JOINT UTILITY LOCATING INFORMATION FOR EXCAVATORS
1-800-892-0123
OR 811

PROJECT BEGINS STA. 114 + 15

BRIDGE S.N. 099-0272

GROSS LENGTH OF PROJECT = 887 FEET = 0.168 MILES
NET LENGTH OF PROJECT = 887 FEET = 0.168 MILES



Birinder S. Sachdeva 11-26-12
BIRINDER S. SACHDEVA, P.E. DATE
EXPIRES: 11-30-2013

STATE OF ILLINOIS
DEPARTMENT OF TRANSPORTATION
DIVISION OF HIGHWAYS

SUBMITTED *December 3, 2012*

John Fortmann
DEPUTY DIRECTOR OF HIGHWAYS, REGION ENGINEER

May 10, 2013
John D. Baranzelli P.E.
ENGINEER OF DESIGN AND ENVIRONMENT

May 10, 2013
Omer Osman P.E.
DIRECTOR OF HIGHWAYS, CHIEF ENGINEER

DISTRICT ONE - DESIGN
PROJECT MANAGER : ISSAM RAYYAN (847) 705-4178
PROJECT ENGINEER : ROBERT BORO (847) 705-4237

CONTRACT NO. 60R63

CR & A
CHRISTIAN-ROGE & ASSOCIATES, INC.
ENGINEERS - PLANNERS - SURVEYORS
211 W. WACKER DRIVE CHICAGO, IL 60606
TELEPHONE: 312-372-2023

PRINTED BY THE AUTHORITY OF THE STATE OF ILLINOIS