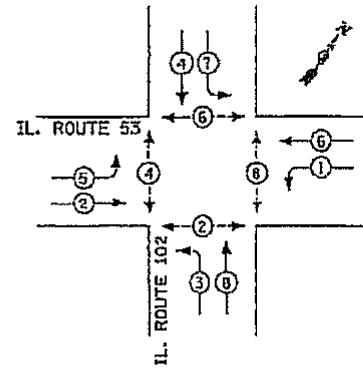


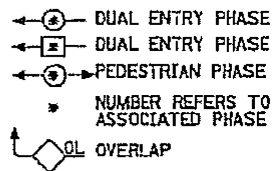
CONTROLLER SEQUENCE



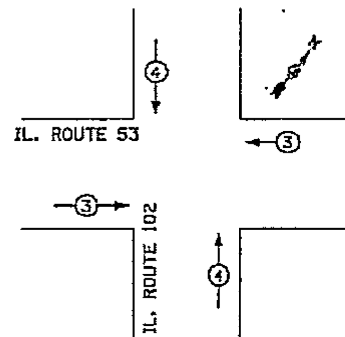
PHASE DESIGNATION DIAGRAM

DUAL ENTRY - ALL LEGS PROTECTED/ PERMITTED LEFT TURN PHASING

LEGEND



EMERGENCY VEHICLE PREEMPTION SEQUENCE



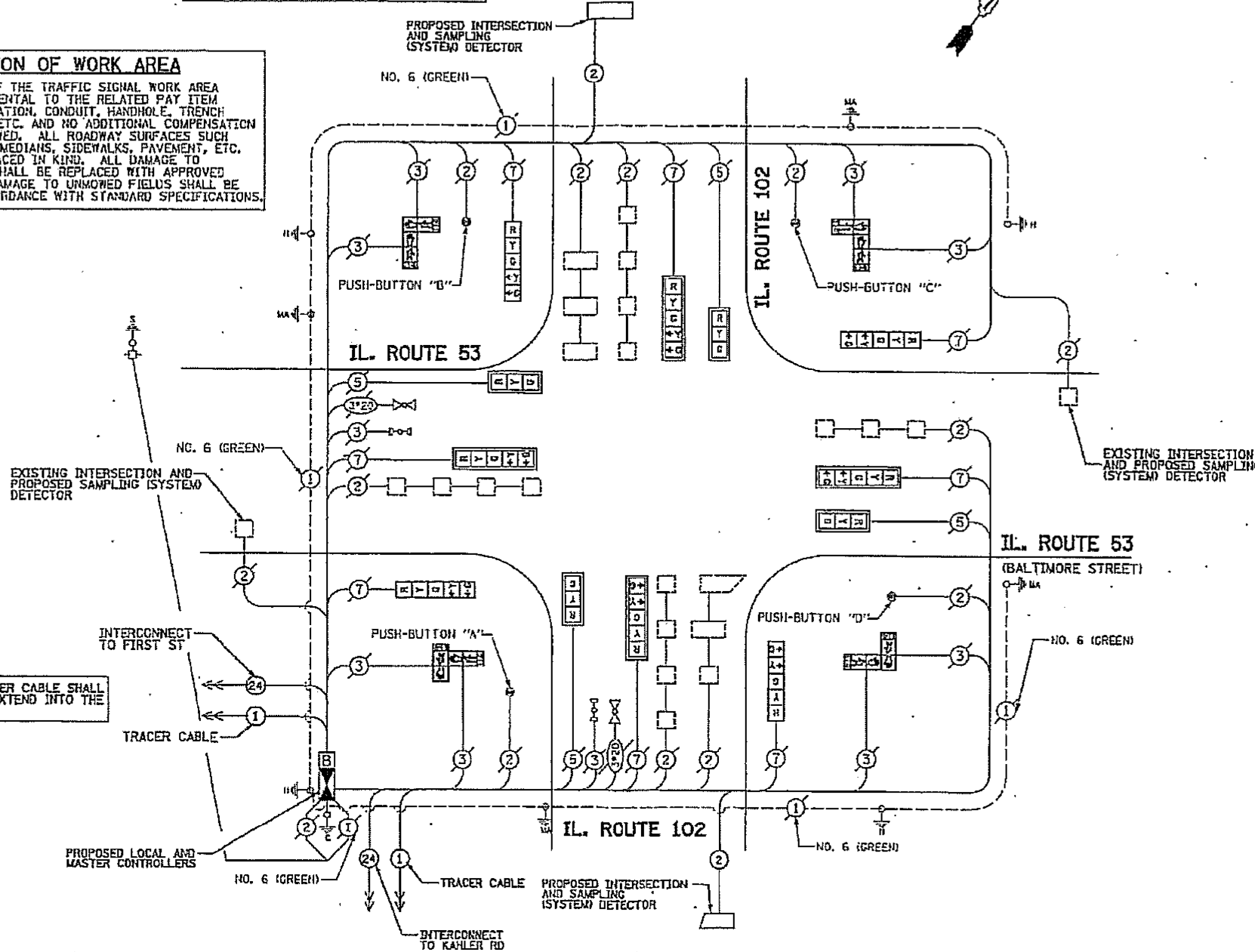
PROPOSED EMERGENCY VEHICLE PREEMPTORS		
EMERGENCY VEHICLE PREEMPTOR	3	4
MOVEMENT	←	↑

I.D.O.T. TRAFFIC SIGNAL INSTALLATION ELECTRICAL SERVICE REQUIREMENTS				
TYPE	NO. LAMPS	WATTAGE (INCAND. LED)	OPERATION	TOTAL WATTAGE
SIGNAL (RED)	12	12	0.50	102.0
(YELLOW)	12	25	0.25	75.0
ARROW (GREEN)	15	15	0.25	45.0
PED. SIGNAL	4	12	0.10	48.0
CONTROLLER	1	100	1.00	100.0
ILLUM. SIGN	1	25	0.05	25.0
FLASHER			0.50	
ENERGY COSTS TO			TOTAL =	441.2

RESTORATION OF WORK AREA
 RESTORATION OF THE TRAFFIC SIGNAL WORK AREA SHALL BE INCIDENTAL TO THE RELATED PAY ITEM SUCH AS FOUNDATION, CONDUIT, HANDHOLE, TRENCH AND BACKFILL, ETC. AND NO ADDITIONAL COMPENSATION SHALL BE ALLOWED. ALL ROADWAY SURFACES SUCH AS SHOULDERS, MEDIANS, SIDEWALKS, PAVEMENT, ETC. SHALL BE REPLACED IN KIND. ALL DAMAGE TO MOWED LAWNS SHALL BE REPLACED WITH APPROVED SOD AND ALL DAMAGE TO UNMOWED FIELDS SHALL BE SEEDED IN ACCORDANCE WITH STANDARD SPECIFICATIONS.

NOTE:
 THE TRAFFIC SIGNAL CONTROLLER EQUIPMENT FOR THE PROJECT SHALL BE "ECONOLITE" TO MATCH THE EXISTING ADJACENT SYSTEM INSTALLATION

PROPOSED CABLE PLAN



CABLE PLAN LEGEND

- EXISTING** **PROPOSED**
- 8" (200mm) TRAFFIC SIGNAL SECTION
 - 12" (300mm) TRAFFIC SIGNAL SECTION
 - 12" (300mm) PEDESTRIAN SIGNAL SECTION
 - 12" (300mm) PEDESTRIAN SIGNAL SECTION WITH COUNTDOWN TIMER
 - CONTROLLER CABINET
 - SERVICE INSTALLATION
 - TELEPHONE CONNECTION
 - VEHICLE DETECTOR, INDUCTION LOOP
 - MAGNETIC DETECTOR
 - EMERGENCY VEHICLE LIGHT DETECTOR
 - CONFIRMATION BEACON
 - PUSHBUTTON DETECTOR
 - DENOTES NUMBER OF CONDUCTORS. ALL CABLE NO. 14 EXCEPT AS INDICATED. ALL LOOP DETECTOR CABLE TO BE SHIELDED.
 - GROUND CABLE IN CONDUIT NO. 6 SOLID COPPER (GREEN)
 - FIBER OPTIC CABLE IN CONDUIT NO. 62.5/125 MM2F SM12F
 - SIGNAL FACE WITH BACKPLATE. "P" INDICATES PROGRAMMED HEAD.
 - RAILROAD CONTROL CABINET
 - ILLUMINATED SIGN "NO LEFT TURN"
 - ILLUMINATED SIGN "NO RIGHT TURN"
 - GROUND ROD AT HANDHOLE (H), DOUBLE HANDHOLE (H), OR CONTROLLER (C)
 - GROUND ROD AT POST (P) OR MAST ARM POLE (MA)
 - GROUND ROD AT ELECTRIC SERVICE INSTALLATION
 - VIDEO VEHICLE SENSOR
 - UNINTERRUPTIBLE POWER SUPPLY

THE END OF THE TRACER CABLE SHALL BE CONTINUOUS AND EXTEND INTO THE CONTROLLER CABINET.

THE END OF THE TRACER CABLE SHALL BE CONTINUOUS AND EXTEND INTO THE CONTROLLER CABINET.

NOTES:

- PUSH-BUTTON "A" SHALL PLACE A CALL IN PHASES 2 & 4
- PUSH-BUTTON "B" SHALL PLACE A CALL IN PHASES 4 & 6
- PUSH-BUTTON "C" SHALL PLACE A CALL IN PHASES 6 & 8
- PUSH-BUTTON "D" SHALL PLACE A CALL IN PHASES 2 & 8

FOR INFORMATION ONLY

FOUNDATION (DEPTH)	FT. (m)	CABLE SLACK	FT. (m)	VERTICAL	FT. (m)
TYPE A - POST	4 (1.2)	HANDHOLE	6.5 (2.0)	ALL FOUNDATIONS	3.5 (1.0)
B - CONTROLLER	4 (1.2)	INDUCTION HANDHOLE	13 (4.0)	MAST ARM (H) POLE	20'-4"-2"
E - M. ARM POLE		SIGNAL POST	2 (0.6)		(6'-4"-0.6m)
		24" (600mm) CONTROLLER CAB.	1 (0.3)	BRACKET MOUNTED	13 (4.0)
		30" (750mm) FIBER OPTIC	13 (4.0)	PED. PUSHBUTTON	4 (1.2)
		36" (900mm) ELECTRIC SERVICE	1 (0.3)	ELECTRIC SERVICE	13.5 (4.1)
		GROUND CABLE	1 (0.3)	SERVICE TO GROUND	13.5 (4.1)
				POST MOUNTED	16 (4.9)