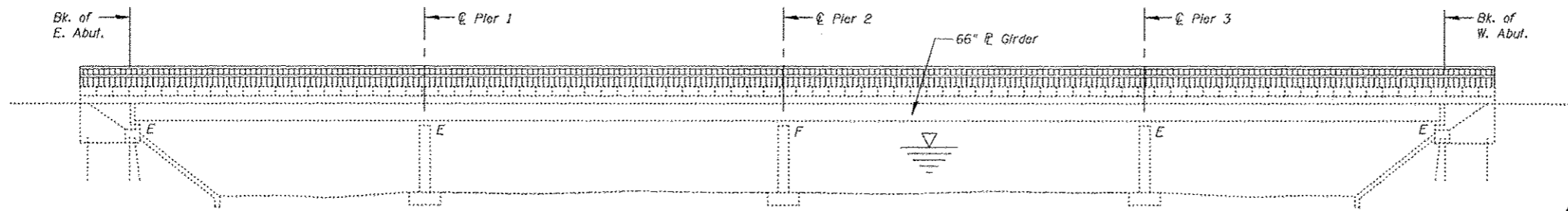


SCOPE OF WORK:

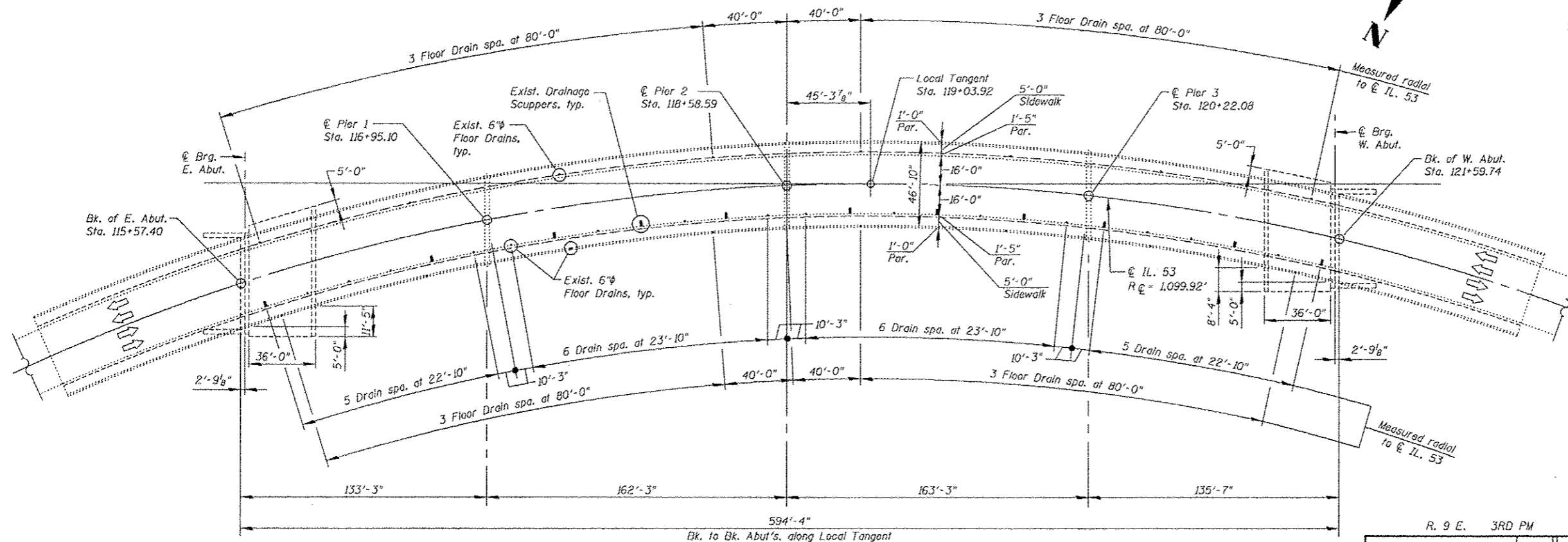
1. Bridge deck scarification and placement of Latex Concrete Overlay.
2. Expansion Joint reconstruction at East & West Abutments.
3. Structural repair of North & South Parapets.
4. Deck drains extended.
5. Slope Wall repairs.

INDEX OF SHEETS

- S1 GENERAL PLAN & ELEVATION
- S2 GENERAL NOTES & TOTAL BILL OF MATERIAL
- S3 DECK CROSS SECTIONS - STAGING
- S4 DECK PLAN REPAIRS-I
- S5 DECK PLAN REPAIRS-II
- S6 DECK PLAN REPAIRS-III
- S7 DECK PLAN REPAIRS-IV
- S8 NORTH PARAPET REPAIRS
- S9 SOUTH PARAPET REPAIRS
- S10 DECK DRAIN EXTENSIONS
- S11 JOINT RECONSTRUCTION DETAILS AT EAST ABUTMENT-I
- S12 JOINT RECONSTRUCTION DETAILS AT EAST ABUTMENT-II
- S13 JOINT RECONSTRUCTION DETAILS AT EAST ABUTMENT-III
- S14 JOINT RECONSTRUCTION DETAILS AT WEST ABUTMENT-I
- S15 JOINT RECONSTRUCTION DETAILS AT WEST ABUTMENT-II
- S16 JOINT RECONSTRUCTION DETAILS AT WEST ABUTMENT-III
- S17 SLOPE WALL REPAIRS
- S18 BAR SPLICER ASSEMBLY AND MECHANICAL SPLICER DETAILS
- S19 PREFORMED JOINT STRIP SEAL

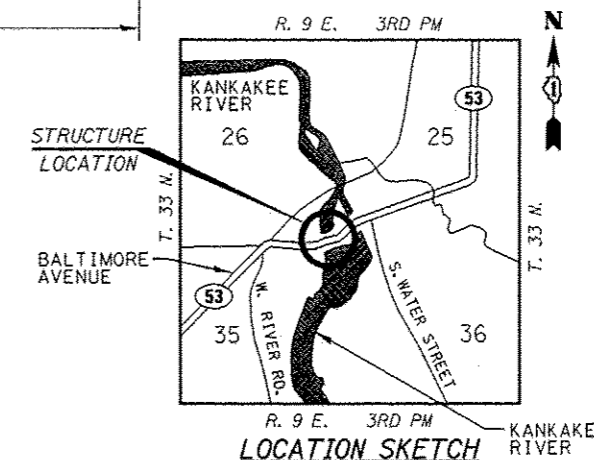


ELEVATION



PLAN

DESIGN STRESSES
 FIELD UNITS
 $f'_c = 3,500$ psi
 $f_y = 60,000$ psi (Reinforcement)



Bh. N. Shah
 BHADRESH N. SHAH 11-16-2012
 LICENSED STRUCTURAL ENGINEER
 STATE OF ILLINOIS LIC. No. 081-004476
 EXPIRES: 11-30-14

GENERAL PLAN & ELEVATION
IL. 53 (BALTIMORE AVE.) OVER
KANKAKEE RIVER
SECTION K-29-A-BR-1
WILL COUNTY
STATION 119+03.92
STRUCTURE NO. 099-0272

FILE NAME = I:\182918-IL-53 (Baltimore)\Structural\CADD Sheets\166R63-01-CPE.dgn

	USER NAME = 100T	DESIGNED - J.C.N./B.N.S.	REVISED -
		CHECKED - B.N.S./J.C.N.	REVISED -
	PLOT SCALE = 49.999968 1/ IN.	DRAWN - F.M.	REVISED -
	PLOT DATE = 11/16/2012	DATE - OCTOBER 9, 2012	REVISED -

STATE OF ILLINOIS
DEPARTMENT OF TRANSPORTATION

SHEET NO. S1 OF S19 SHEETS

F.A.P. RTE.	SECTION	COUNTY	TOTAL SHEETS	SHEET NO.
846	K-29-A-BR-1	WILL	55	30
CONTRACT NO. 60R63			ILLINOIS FED. AID PROJECT	