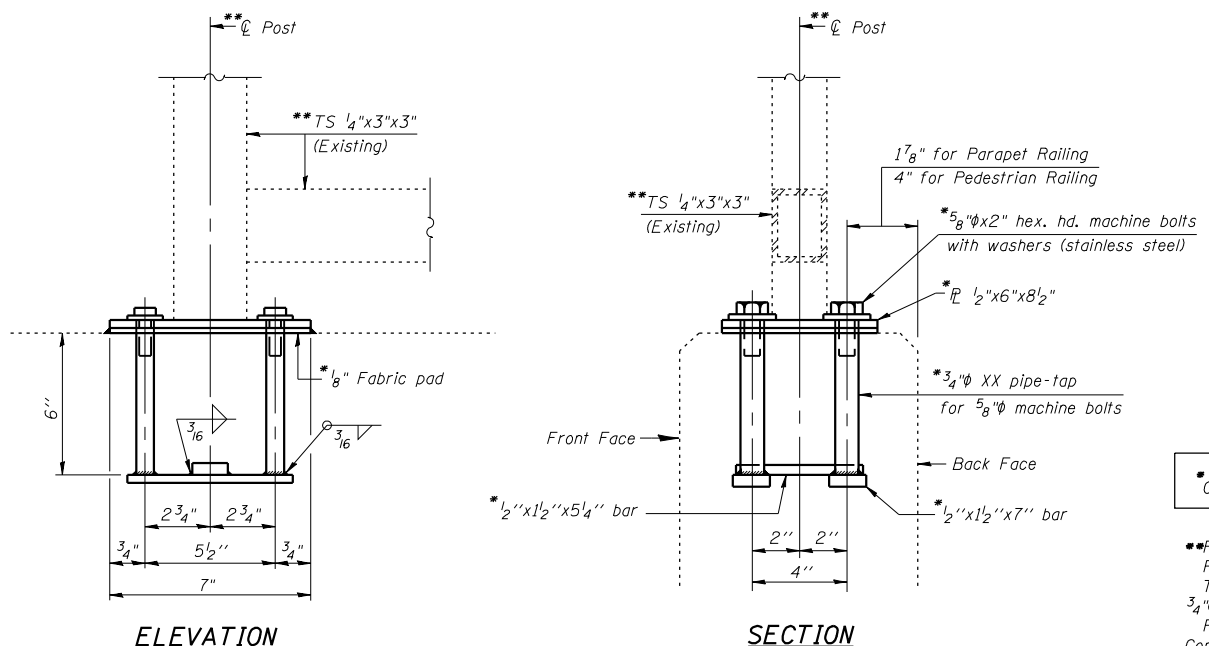


**NOTE "A":**  
Existing transverse reinforcement bars that extend out of the removal area shall remain. These reinforcement bars are perpendicular to  $\perp$  IL. 53, not parallel to the skew.

**NOTE "B":**  
Existing longitudinal reinforcement bars to remain.

**SECTION A-A**  
**THRU SOUTH SIDEWALK**  
(North Sidewalk - similar)  
(Looking West)

Notes:  
All horizontal dimensions are given radially.  
All dimensions and reinforcement bar call outs are the same for North sidewalk and South sidewalk, except as noted.



**RAIL POST REMOVAL & REPLACEMENT DETAILS**  
**FOR PARAPET RAILING & PEDESTRIAN RAILING**

• Cost included with Concrete Superstructure

••Remove and store rails in the concrete removal area prior to concrete removal. Remove and store rail post in the concrete removal area. The Contractor must verify locations & sizes of existing holes prior to ordering 3/4\"/>

FILE NAME = I:\102918.1.53 (baltimore)\structural\cadd sheets\160R63-15-jt\_recon\_west\_abut-1.dgn



USER NAME = IDOT	DESIGNED - J.C.N./B.N.S.	REVISED -
PLOT SCALE = 100.000000' / IN.	CHECKED - B.N.S./J.C.N.	REVISED -
PLOT DATE = 1/7/2013	DRAWN - F.M.	REVISED -
	DATE - OCTOBER 9, 2012	REVISED -

**STATE OF ILLINOIS**  
**DEPARTMENT OF TRANSPORTATION**

**JOINT RECONSTRUCTION DETAILS AT WEST ABUTMENT-II**  
**STRUCTURE NO. 099-0272**

SHEET NO. S15 OF S19 SHEETS

F.A.P. RTE. 846	SECTION K-29-A-BR-1	COUNTY WILL	TOTAL SHEETS 55	SHEET NO. 44
CONTRACT NO. 60R63				ILLINOIS FED. AID PROJECT