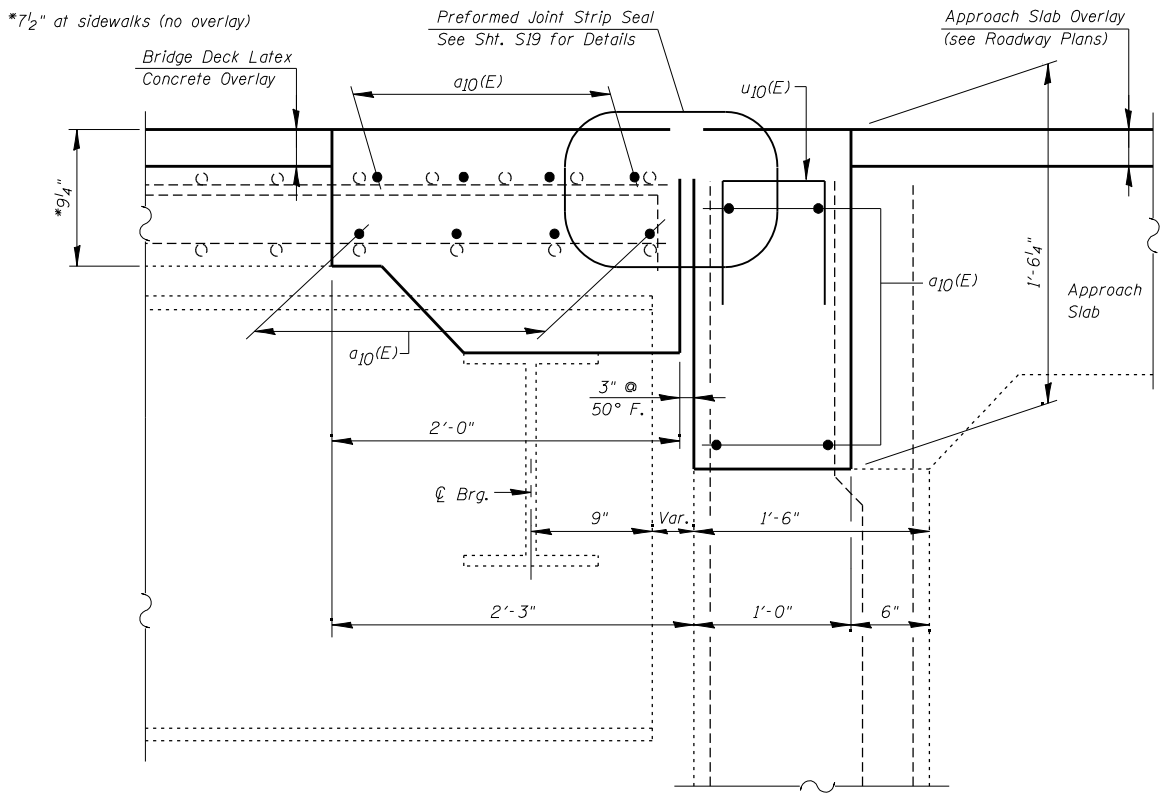


EXISTING
SECTION B-B



PROPOSED
SECTION B-B

LEGEND:
 Concrete Removal

WEST ABUTMENT

Note:
For Bar Splicer Assembly Details, See Sht. S18

FILE NAME = I:\102918_11_53 (baltimore)\structural\cadd sheets\160663-16-16-16-recon-west_abut-III.dgn



USER NAME = IDOT	DESIGNED - J.C.N./B.N.S.	REVISED -
PLOT SCALE = 100.000000' / IN.	CHECKED - B.N.S./J.C.N.	REVISED -
PLOT DATE = 1/7/2013	DRAWN - F.M.	REVISED -
	DATE - OCTOBER 9, 2012	REVISED -

STATE OF ILLINOIS
DEPARTMENT OF TRANSPORTATION

JOINT RECONSTRUCTION DETAILS AT WEST ABUTMENT-III
STRUCTURE NO. 099-0272

SHEET NO. S16 OF S19 SHEETS

F.A.P. RTE. 846	SECTION K-29-A-BR-1	COUNTY WILL	TOTAL SHEETS 55	SHEET NO. 45
CONTRACT NO. 60R63				ILLINOIS FED. AID PROJECT