

STATE OF ILLINOIS
DEPARTMENT OF TRANSPORTATION
DIVISION OF HIGHWAYS
**PROPOSED
HIGHWAY PLANS**

F.A.P. RTE.	SECTION	COUNTY	TOTAL SHEETS	SHEET NO.
*	2012-006 I	COOK/DUPAGE	31	1
* VARIOUS ROUTES		ILLINOIS	CONTRACT NO. 60T52	

FOR INDEX OF SHEETS, SEE SHEET NO. 2

TRAFFIC DATA:

FOSTER AVENUE
EXISTING ADT = 19,900
SPEED LIMIT = 30 MPH

I-290
EXISTING ADT = 233,300
SPEED LIMIT = 55 MPH

IL 171
EXISTING ADT = 27,600
SPEED LIMIT = 35 MPH

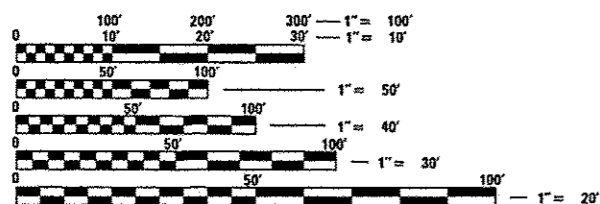
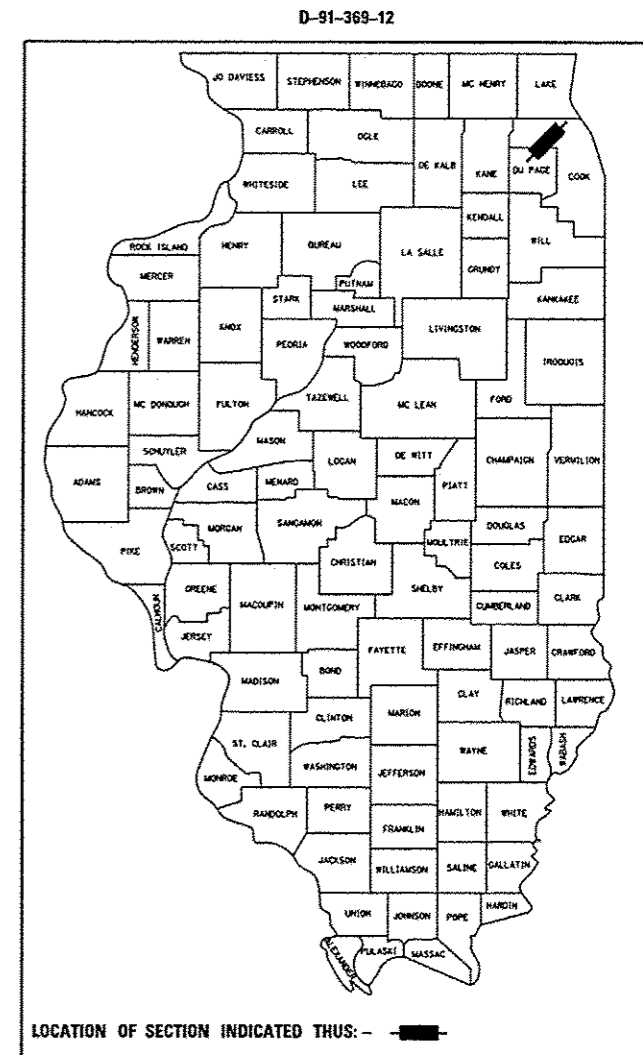
SHERMER ROAD
EXISTING ADT = 12,500
SPEED LIMIT = 30 MPH

PALATINE ROAD
EXISTING ADT = 11,300
SPEED LIMIT = 40 MPH

IL 72
EXISTING ADT = 25,500
SPEED LIMIT = 40 MPH

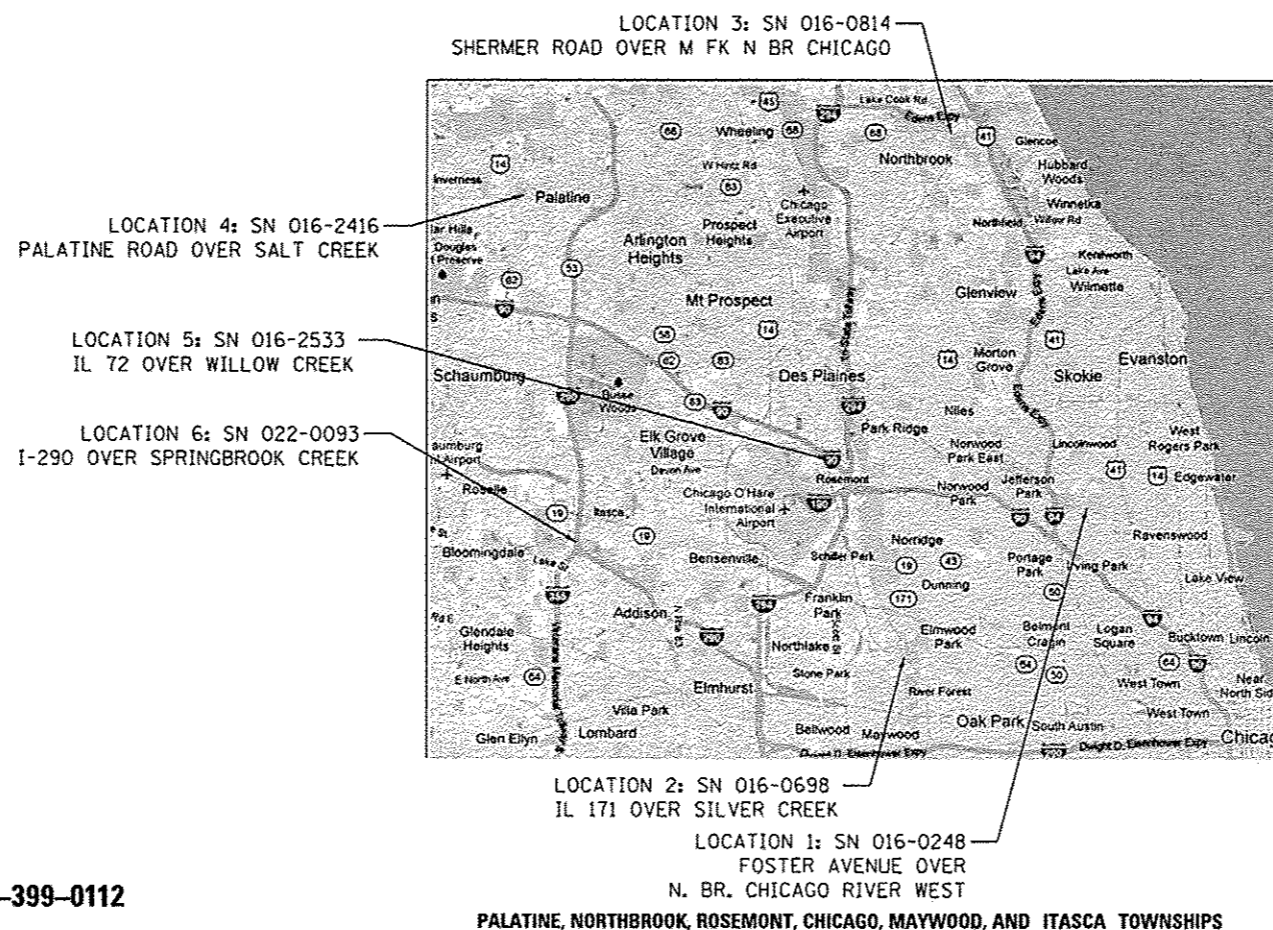
THIS PROJECT IS LOCATED IN THE VILLAGES OF ITASCA, NORTHBROOK, PALATINE, MAYWOOD, AND ROSEMONT AND IN THE CITY OF CHICAGO

VARIOUS ROUTES
SECTION 2012-006 I
AT VARIOUS COOK & DuPAGE COUNTY LOCATIONS
RIP RAP IMPROVEMENTS
COOK & DuPAGE COUNTY
C-91-369-12



FULL SIZE PLANS HAVE BEEN PREPARED USING STANDARD ENGINEERING SCALES. REDUCED SIZED PLANS WILL NOT CONFORM TO STANDARD SCALES. IN MAKING MEASUREMENTS ON REDUCED PLANS, THE ABOVE SCALES MAY BE USED.

J.U.L.I.E.
JOINT UTILITY LOCATION INFORMATION FOR EXCAVATION
1-800-892-0123
OR 811



PROJECT ENGINEER: PETER JOHNSTON (GRAEF) 773-399-0112
PROJECT MANAGER: KEN ENG (IDOT) 847-705-4247

CONTRACT NO. 60T52

PALATINE, NORTHBROOK, ROSEMONT, CHICAGO, MAYWOOD, AND ITASCA TOWNSHIPS

PROFESSIONAL ENGINEER'S SIGN & SEAL

Peter M. Johnston

022-041641
REGISTERED
PROFESSIONAL
ENGINEER
OF
ILLINOIS

EXPIRES: 11-30-13

STATE OF ILLINOIS
DEPARTMENT OF TRANSPORTATION
DIVISION OF HIGHWAYS

SUBMITTED: March 15, 2013

John F. Williams
DEPUTY DIRECTOR OF HIGHWAYS, REGION ENGINEER

May 10, 2013
John D. Baranzelli PE
ENGINEER OF DESIGN AND ENVIRONMENT

May 10, 2013
Omer Osman PE
DIRECTOR OF HIGHWAYS, CHIEF ENGINEER

PRINTED BY THE AUTHORITY
OF THE STATE OF ILLINOIS