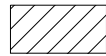


**LEGEND**

STONE RIPRAP, CLASS A4 (2 FT THICK)

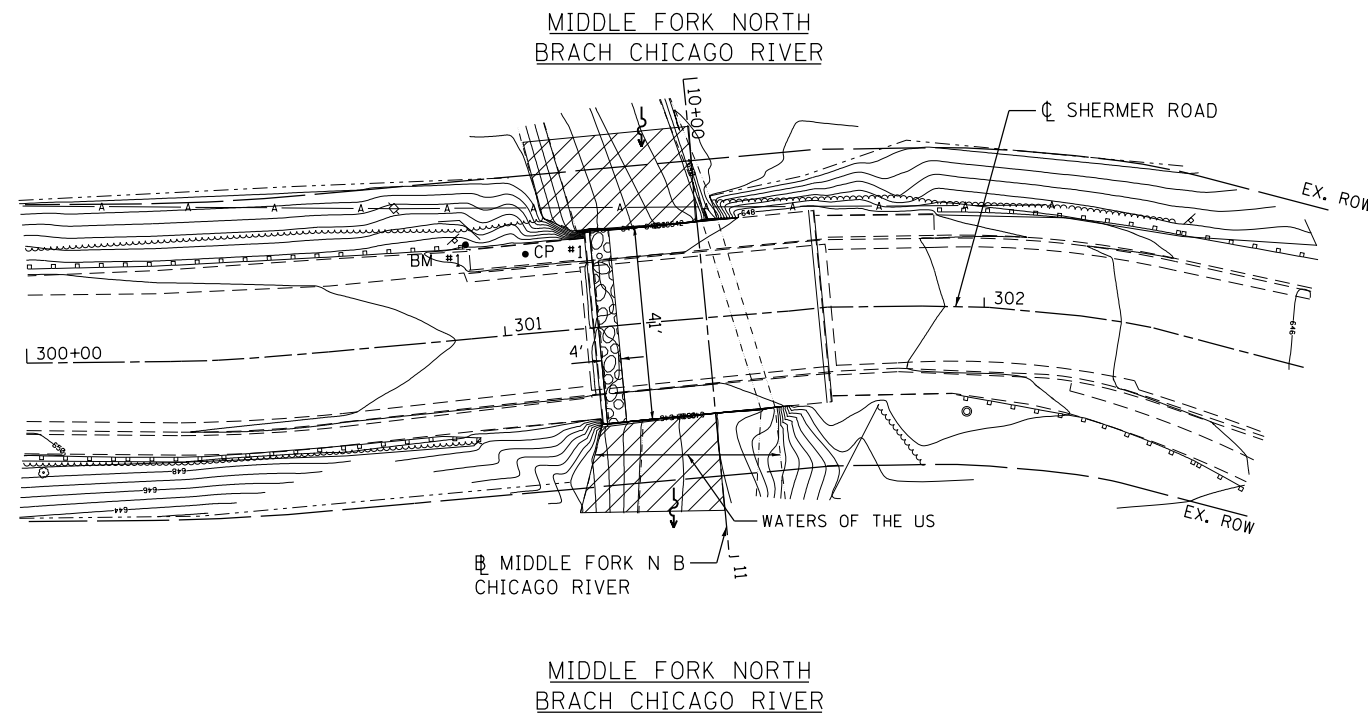
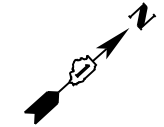


PERMANENT IMPACTS TO THE WATERS OF THE U.S. = 0.004 ACRES  
STONE RIPRAP, CLASS A4 (2' THICK) - 26 TONS



TEMPORARY IMPACTS TO THE WATERS OF THE U.S. = 0.027 ACRES

- CP 1 - SET "X" IN THE CONCRETE WALK ON THE WEST SIDE OF SHERMER ELEV. = 649.35
- CP 2 - FOUND "X" IN CONCRETE WALK ON THE SOUTHERLY SIDE OF SHERMER ELEV. =650.76
- BM 1 - SET "□" AT THE SOUTHWEST CORNER OF CONCRETE WALL OF THE BRIDGE ELEV. = 649.50



3/8/2013 3:14:55 PM

**GRAEF** 8501 N. Higgins Road Suite 280  
Chicago, Illinois 60631  
(773) 399-0112

USER NAME = 1485	DESIGNED -	REVISED -
	DRAWN -	REVISED -
PLOT SCALE = 40.0000' / in.	CHECKED -	REVISED -
PLOT DATE = 3/8/2013	DATE - 03/20/2013	REVISED -

**STATE OF ILLINOIS  
DEPARTMENT OF TRANSPORTATION**

**COOK & DuPAGE COUNTY RIP RAP IMPROVEMENTS**  
**SN 016-0814 SHERMER ROAD AT M FK N BR CHICAGO - EROSION PLAN**  
SCALE: 1"=20' SHEET 2 OF 2 SHEETS STA. TO STA.

F.A. RTE.	SECTION	COUNTY	TOTAL SHEETS	SHEET NO.
*	2012-006 I	COOK/DuPAGE	31	14
* VARIOIUS ROUTES			CONTRACT NO. 60T52	
ILLINOIS FED. AID PROJECT				