

**LEGEND**



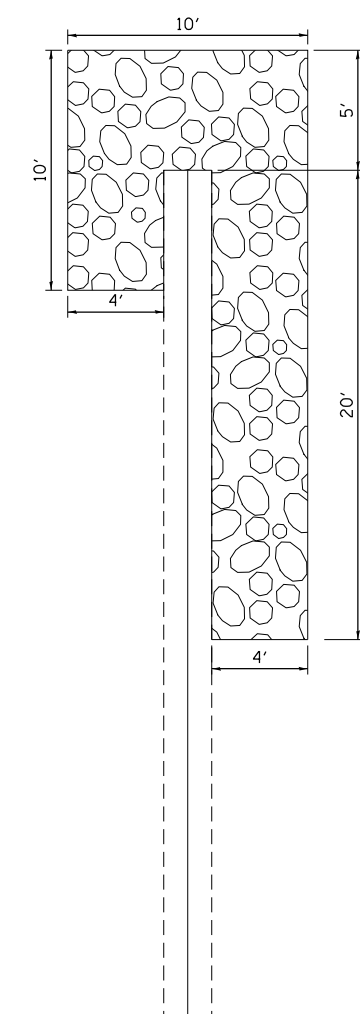
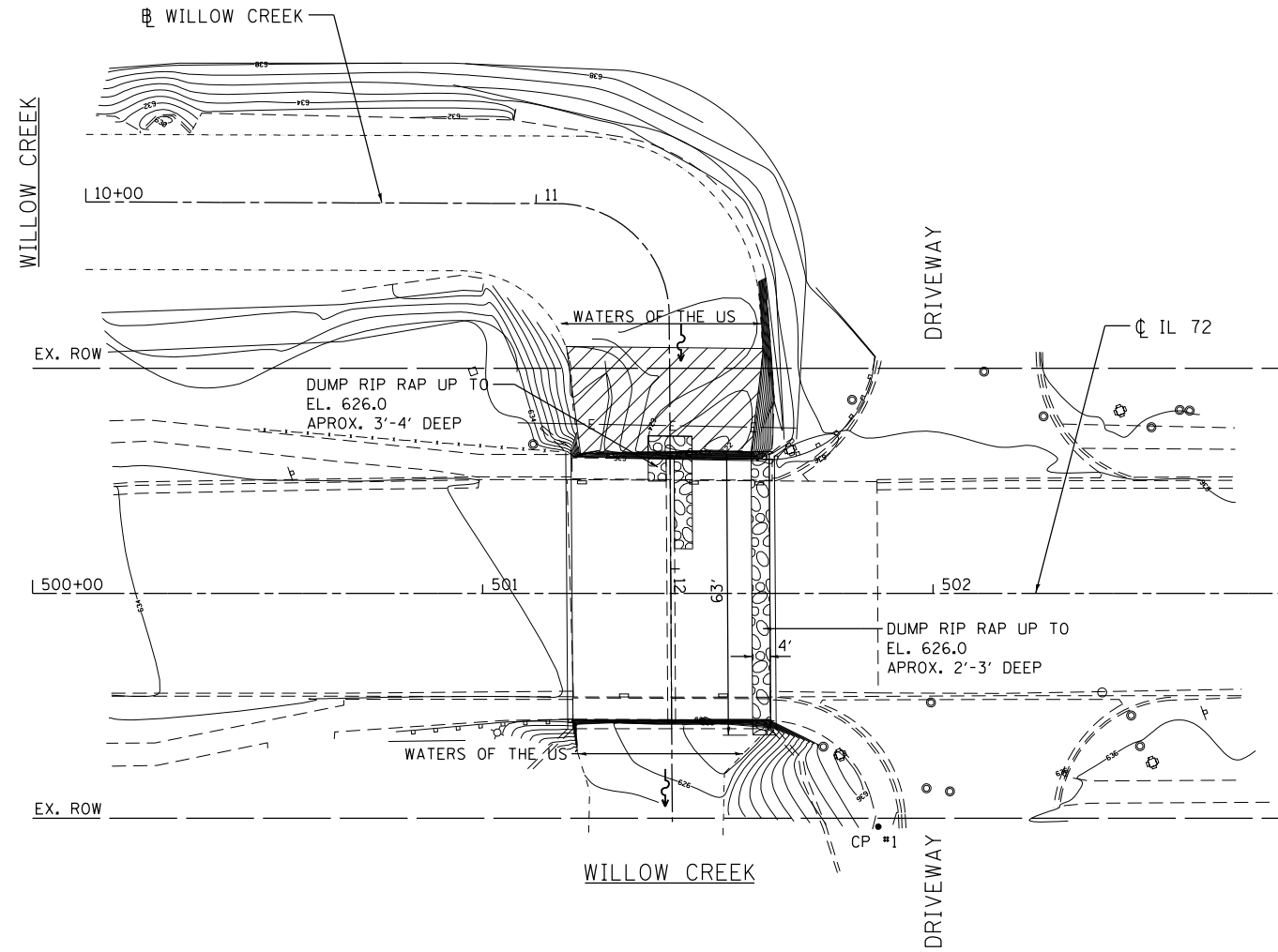
PERMANENT IMPACTS TO THE WATERS OF THE U.S. = 0.008 ACRES  
STONE RIPRAP, CLASS A4 - 88 TONS



TEMPORARY IMPACTS TO THE WATERS OF THE U.S. = 0.021 ACRES

CP 1 - SET "X" IN THE CONCRETE WALK AT THE SOUTHWEST CORNER OF HIGGINS AND DRIVEWAY  
ELEV. = 635.88

CP 2 - SET "X" IN THE CONCRETE WALK ON THE NORTH SIDE OF HIGGINS WEST OF THE CREEK  
ELEV. = 635.71



3/8/2013 3:14:58 PM



USER NAME = 1485	DESIGNED -	REVISED -
	DRAWN -	REVISED -
PLOT SCALE = 40.0000' / in.	CHECKED -	REVISED -
PLOT DATE = 3/8/2013	DATE - 03/20/2013	REVISED -

**STATE OF ILLINOIS  
DEPARTMENT OF TRANSPORTATION**

**COOK & DuPAGE COUNTY RIP RAP IMPROVEMENTS  
SN 016-2533 IL 72 AT WILLOW CREEK - EROSION PLAN**

SCALE: 1"=20'    SHEET 2 OF 2 SHEETS    STA.    TO STA.

F.A. RTE.	SECTION	COUNTY	TOTAL SHEETS	SHEET NO.
*	2012-006 I	COOK/DuPAGE	31	20
* VARIOUS ROUTES			CONTRACT NO. 60T52	
ILLINOIS FED. AID PROJECT				