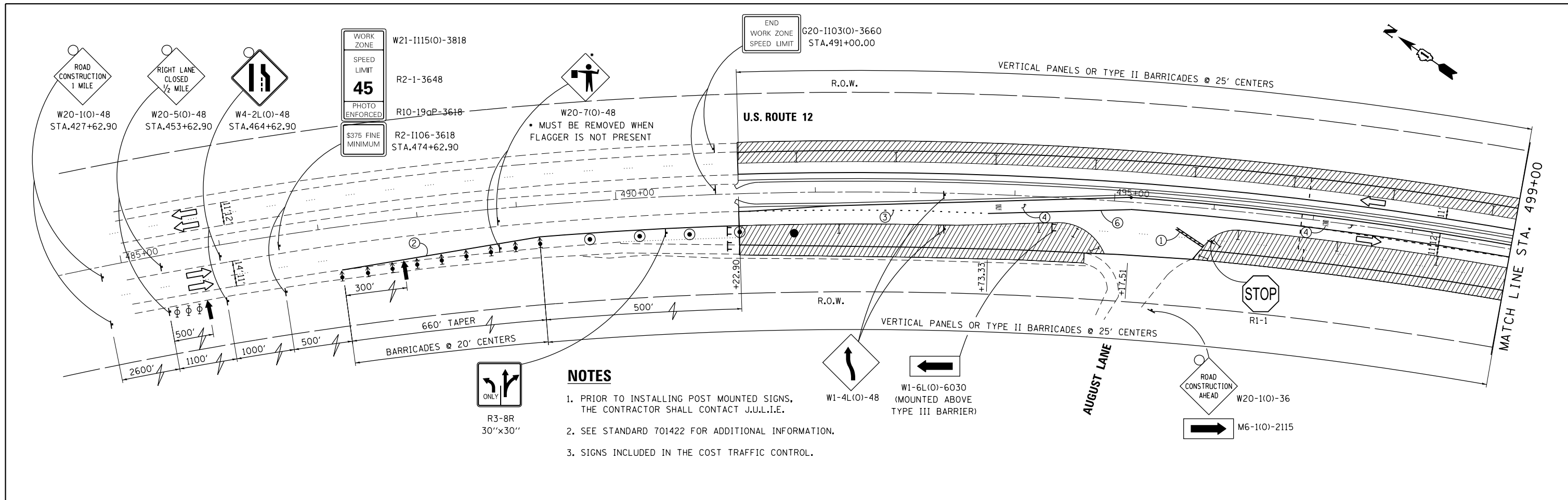
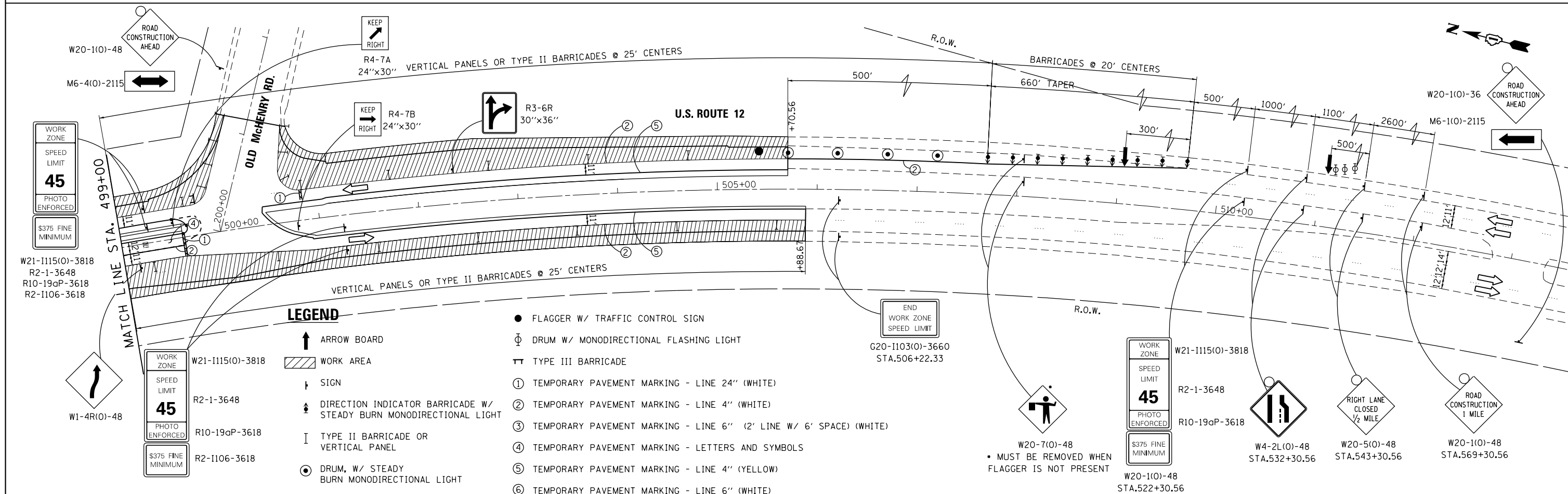


FILE NAME = G:\Projects\ILLINOIS Department of Transportation\PTB 162 - Item 7 - Various Various Work Order No. 9- US 12 at Old McHenry Rd\CADD Sheets\0160788-ah-t-stage2.dgn



- NOTES**
1. PRIOR TO INSTALLING POST MOUNTED SIGNS, THE CONTRACTOR SHALL CONTACT J.U.L.I.E.
 2. SEE STANDARD 701422 FOR ADDITIONAL INFORMATION.
 3. SIGNS INCLUDED IN THE COST TRAFFIC CONTROL.



- LEGEND**
- FLAGGER W/ TRAFFIC CONTROL SIGN
 - ⊕ DRUM W/ MONODIRECTIONAL FLASHING LIGHT
 - TT TYPE III BARRICADE
 - ① TEMPORARY PAVEMENT MARKING - LINE 24" (WHITE)
 - ② TEMPORARY PAVEMENT MARKING - LINE 4" (WHITE)
 - ③ TEMPORARY PAVEMENT MARKING - LINE 6" (2' LINE W/ 6' SPACE) (WHITE)
 - ④ TEMPORARY PAVEMENT MARKING - LETTERS AND SYMBOLS
 - ⑤ TEMPORARY PAVEMENT MARKING - LINE 4" (YELLOW)
 - ⑥ TEMPORARY PAVEMENT MARKING - LINE 6" (WHITE)
 - ↑ ARROW BOARD
 - ▨ WORK AREA
 - ↓ SIGN
 - ↑ DIRECTION INDICATOR BARRICADE W/ STEADY BURN MONODIRECTIONAL LIGHT
 - I TYPE II BARRICADE OR VERTICAL PANEL
 - ⊙ DRUM, W/ STEADY BURN MONODIRECTIONAL LIGHT

WORK ZONE
SPEED LIMIT
45
PHOTO ENFORCED
\$375 FINE MINIMUM

W21-1115(O)-3818
R2-1-3648
R10-19aP-3618
R2-1106-3618

WORK ZONE
SPEED LIMIT
45
PHOTO ENFORCED
\$375 FINE MINIMUM

W21-1115(O)-3818
R2-1-3648
R10-19aP-3618
W4-2L(O)-48 STA.532+30.56
W20-5(O)-48 STA.543+30.56
W20-1(O)-48 STA.569+30.56

USER NAME = mml1er	DESIGNED - MTM	REVISED -
PLOT SCALE = 100.0000' / 1" =	DRAWN - MTM	REVISED -
PLOT DATE = 3/27/2013	CHECKED - BA	REVISED -
	DATE - 3/27/13	REVISED -

**STATE OF ILLINOIS
DEPARTMENT OF TRANSPORTATION**

**SUGGESTED MAINTENANCE OF TRAFFIC
STAGE II**

SCALE: 1"=50'	SHEET 2	OF 2 SHEETS	STA.	TO STA.
---------------	---------	-------------	------	---------

F.A.P. RTE.	SECTION	COUNTY	TOTAL SHEETS	SHEET NO.
334	TR-TS	LAKE	58	23
CONTRACT NO. 60T88				
ILLINOIS FED. AID PROJECT				