

MAINTENANCE OF TRAFFIC - GENERAL NOTES:

1. SEE SPECIAL PROVISIONS TITLED TRAFFIC CONTROL AND PROTECTION (SPECIAL).

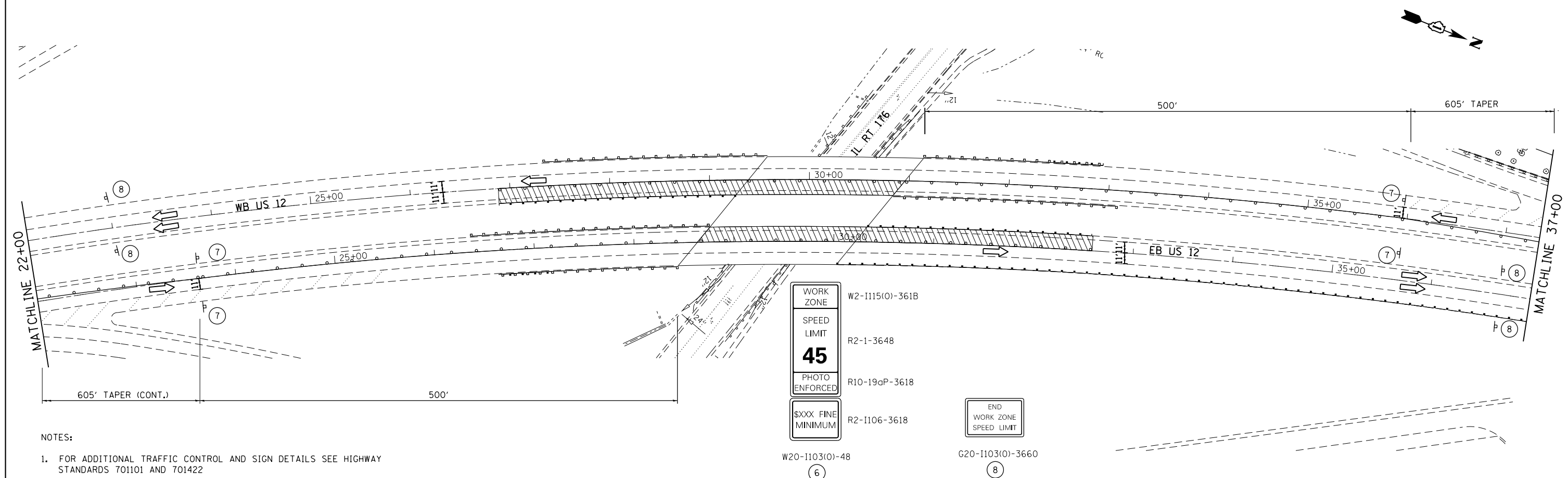
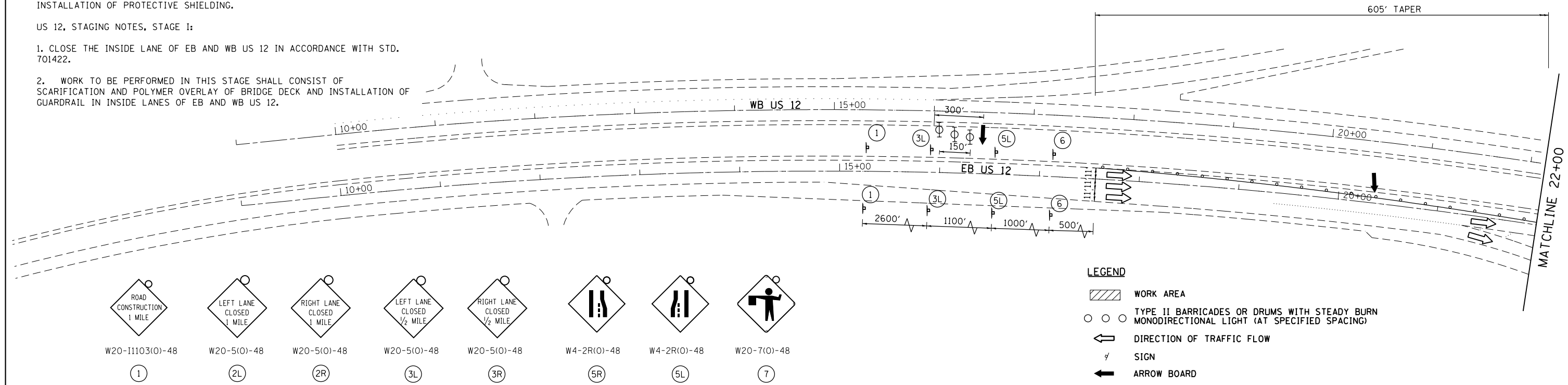
IL RT 176, STAGING NOTES, STAGE IA:

1. CLOSE EB LANE ON IL RT 176 IN ACCORDANCE WITH STD. 701501 DURING INSTALLATION OF PROTECTIVE SHIELDING.

US 12, STAGING NOTES, STAGE I:

1. CLOSE THE INSIDE LANE OF EB AND WB US 12 IN ACCORDANCE WITH STD. 701422.

2. WORK TO BE PERFORMED IN THIS STAGE SHALL CONSIST OF SCARIFICATION AND POLYMER OVERLAY OF BRIDGE DECK AND INSTALLATION OF GUARDRAIL IN INSIDE LANES OF EB AND WB US 12.



NOTES:  
1. FOR ADDITIONAL TRAFFIC CONTROL AND SIGN DETAILS SEE HIGHWAY STANDARDS 701101 AND 701422

FILE NAME =	USER NAME = r9e11	DESIGNED -	REVISED -	<b>STATE OF ILLINOIS DEPARTMENT OF TRANSPORTATION</b>	<b>US 12 /IL 59 OVER IL RT 176 MAINTENANCE OF TRAFFIC STAGE I</b>	F.A.P. RTE.	SECTION	COUNTY	TOTAL SHEETS	SHEET NO.	
	PLOT SCALE = 100.0000' / 1" =	DRAWN -	REVISED -			334	(TH-B)BR	LAKE	25	8	
	PLOT DATE = 4/15/2013	CHECKED -	REVISED -			CONTRACT NO. 60W19					
		DATE -	REVISED -			ILLINOIS FED. AID PROJECT					