

4/5/2013 11:39:33 AM D:\60W48-01-Cover.dgn

06-14-13 LETTING ITEM 138

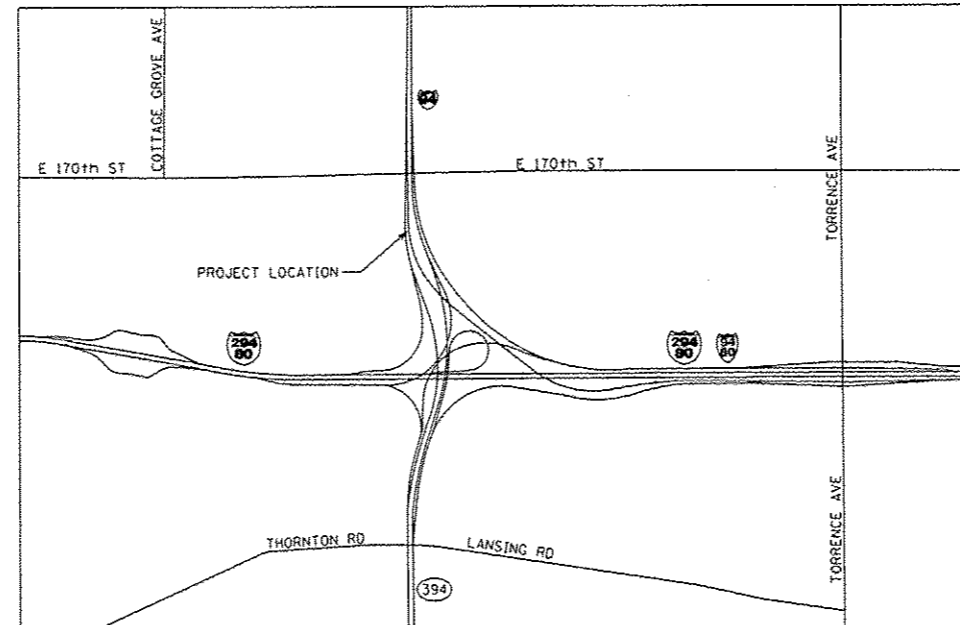
STATE OF ILLINOIS
DEPARTMENT OF TRANSPORTATION
DIVISION OF HIGHWAYS

**PROPOSED
HIGHWAY PLANS**

FAI ROUTE 94 (I-94)
SECTION 0203.1(R-2&3)I
PAVEMENT REPAIR
AT FAI ROUTE 94(EB)/FAP ROUTE 332(SB)
COOK COUNTY

C-91-292-13

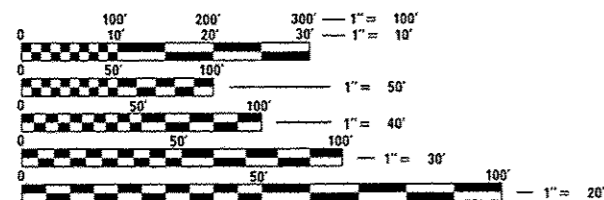
SECTION 26
R14E



THORNTON TOWNSHIP

EXISTING ADT = 4450 (2011)
SPEED LIMIT = 55 MPH

PROJECT IS IN THE VILLAGE
OF SOUTH HOLLAND, IL



FULL SIZE PLANS HAVE BEEN PREPARED USING STANDARD
ENGINEERING SCALES. REDUCED SIZED PLANS WILL NOT
CONFORM TO STANDARD SCALES. IN MAKING MEASUREMENTS
ON REDUCED PLANS, THE ABOVE SCALES MAY BE USED.

J.U.L.I.E.
JOINT UTILITY LOCATION INFORMATION FOR EXCAVATION
1-800-892-0123
OR 811

PROJECT ENGINEER: ROBERT BORO 847-705-4237
PROJECT MANAGER: ISSAM RAYYAN 847-705-4178

CONTRACT NO. 60W48

GROSS LENGTH = 178 FT. = 0.337 MILE
NET LENGTH = 178 FT. = 0.337 MILE

F.A.I. RTE.	SECTION	COUNTY	TOTAL SHEETS	SHEET NO.
94	0203.1(R-2&3)I	COOK	10	1
		ILLINOIS	CONTRACT NO. 60W48	

D-91-292-13



THOMAS P. PAOLICCHI
062-056747
REGISTERED
PROFESSIONAL
ENGINEER
OF
ILLINOIS
Thomas Paolicchi
THOMAS P. PAOLICCHI, P.E.
DATE: 04/05/2013
EXP. 11/30/2013
SHEETS: 1-8

STATE OF ILLINOIS
DEPARTMENT OF TRANSPORTATION
DIVISION OF HIGHWAYS
SUBMITTED APRIL 9, 2013
John Friedman
DEPUTY DIRECTOR OF HIGHWAYS, REGION ENGINEER
MAY 10 2013
John P. Baranzoni, P.E.
actg ENGINEER OF DESIGN AND ENVIRONMENT
MAY 10 2013
Omer Osman, P.E.
DIRECTOR OF HIGHWAYS, CHIEF ENGINEER

PRINTED BY THE AUTHORITY
OF THE STATE OF ILLINOIS



INDEX OF SHEETS

SHEET NO.	DESCRIPTION
1	COVER SHEET
2	INDEX OF SHEETS, STATE STANDARDS, AND GENERAL NOTES
3-4	SUMMARY OF QUANTITIES
5	SUGGESTED MAINTENANCE OF TRAFFIC
6	PAVING PLAN
7	DRAINAGE PLAN
8	PAVEMENT MARKING PLAN
9	DISTRICT ONE TYPICAL PAVEMENT MARKINGS (TC-13)
10	TRAFFIC CONTROL DETAILS FOR FREEWAY SHOULDER CLOSURES AND PARTIAL RAMP CLOSURES (TC-17)

STATE STANDARDS

STANDARD NO.	DESCRIPTION
635001-02	REFLECTOR MARKER AND MOUNTING DETAILS
701901-02	TRAFFIC CONTROL DEVICES
704001-07	TEMPORARY CONCRETE BARRIER
720001-01	SIGN PANEL MOUNTING DETAILS
720011-01	METAL POSTS FOR SIGNS, MARKERS AND DELINEATORS
729001-01	APPLICATIONS OF TYPE A AND B METAL POSTS (FOR SIGNS AND MARKERS)

GENERAL NOTES - ROADWAY


- BEFORE STARTING ANY EXCAVATION, THE CONTRACTOR SHALL CALL "J.U.L.I.E." AT (800) 892-0123 FOR FIELD LOCATIONS OF BURIED ELECTRIC, TELEPHONE AND GAS UTILITIES. (48 HOUR NOTIFICATION IS REQUIRED.)
- THE CONTRACTOR SHALL COORDINATE CONSTRUCTION ACTIVITIES WITH UTILITY COMPANIES, AND THE LOCAL MUNICIPALITY.
- THE CONTRACTOR WILL NOT BE ALLOWED TO SET UP A YARD OR FIELD OFFICE ON STATE PROPERTY WITHOUT WRITTEN PERMISSION FROM THE DEPARTMENT.
- ALL DAMAGE TO EXISTING PAVEMENT MARKING OR RAISED REFLECTIVE PAVEMENT MARKERS OUTSIDE THE REMOVAL LINE SHOWN ON THE PLANS SHALL BE REPLACED AT THE CONTRACTORS EXPENSE.
- WHEN MILLED PAVEMENT IS OPENED TO TRAFFIC THE MAXIMUM GRADE DIFFERENTIAL BETWEEN PASSES OF THE MILLING MACHINE SHALL NOT EXCEED 1 1/2 INCHES WHERE THE SPEED LIMIT IS 45 MPH OR LESS AND 1 INCH WHERE THE SPEED LIMIT IS GREATER THAN 45 MPH. WITH WRITTEN APPROVAL FROM THE ENGINEER, A MAXIMUM GRADE DIFFERENTIAL OF 3 INCHES MAY BE ALLOWED IF THE EDGE OF THE MILLING IS SLOPED A MINIMUM 1:3 (V:H).
- BUTT JOINTS WILL BE INSTALLED AT THE ENDS OF ALL RESURFACING (WHERE RESURFACING MEETS EXISTING PAVEMENT). IN ACCORDANCE WITH "BUTT JOINT AND HOT-MIX ASPHALT TAPER DETAILS" SHEET INCLUDED IN THE PLANS, UNLESS OTHERWISE SPECIFIED.
- THE CONTRACTOR SHALL CONTACT THE DISTRICT ONE TRAFFIC CONTROL SUPERVISOR AT (847) 705-4470 A MINIMUM OF 72 HOURS IN ADVANCE OF BEGINNING WORK.
- WHEN ARTIFICIAL LIGHTING IS UTILIZED IN NIGHT OPERATIONS, THE CONTRACTOR SHALL EXERCISE THE UTMOST PRECAUTIONS IN PREVENTING ADVERSE VISIBILITY TO THE MOTORING PUBLIC AND ADJOINING RESIDENTIAL AREA.
- BEFORE BEGINNING ANY WORK, THE CONTRACTOR SHALL RETAIN AND RECORD (FOR FUTURE REFERENCES), ALL EXISTING PAVEMENT MARKING LINES AND RAISED REFLECTIVE PAVEMENT MARKERS IN ORDER THAT THESE LOCATIONS CAN BE RE- ESTABLISHED FOR STRIPING. EXACT LOCATIONS OF ALL STRIPING SHALL BE AS DIRECTED BY THE ENGINEER.
- THE ENGINEER SHALL CONTACT PATRICE HARRIS, AREA TRAFFIC FIELD ENGINEER (OR TECHNICIAN), AT (708) 597-9800 OR (847) 715-8422 A MINIMUM OF TWO (2) WEEKS PRIOR TO PLACEMENT OF PERMANENT PAVEMENT MARKINGS.
- DO NOT SCALE PLANS FOR CONSTRUCTION DIMENSIONS.
- THESE PLANS HAVE BEEN PREPARED FROM NOTES RECEIVED FROM DISTRICT 1 MAINTENANCE INSPECTORS.
- SAW CUTTING OF PAVEMENTS, SHOULDERS, ETC., SHALL BE TO FULL DEPTH AND SHALL RESULT IN A CLEAN, STRAIGHT EDGE ON THE PORTION REMAINING. THE COST OF SAW CUTTING REMOVAL ITEMS SHALL BE INCLUDED IN THE UNIT PRICES OF THESE ITEMS.
- PLAN DIMENSIONS AND DETAILS RELATIVE TO EXISTING PLANS ARE SUBJECT TO ROUTINE VARIATION. THE CONTRACTOR SHALL FIELD VERIFY EXISTING DIMENSIONS AND DETAILS AFFECTING NEW CONSTRUCTION OR ORDERING MATERIALS. SUCH VARIATION SHALL NOT CAUSE FOR ADDITIONAL COMPENSATION FOR A CHANGE IN THE SCOPE OF THE WORK, HOWEVER, THE CONTRACTOR WILL BE PAID FOR QUANTITY ACTUALLY FURNISHED BASED AT THE UNIT PRICE BID FOR THE WORK.

GENERAL NOTES - TRAFFIC CONTROL & PROTECTION

- STAGING PROCEDURES PRESENTED ARE THE SUGGESTED SEQUENCE OF OPERATIONS. AT HIS OPTION, THE CONTRACTOR MAY SUBMIT AN ALTERNATIVE STAGING PROPOSAL TO THE ENGINEER FOR HIS APPROVAL.
- TRAFFIC CONDITIONS, ACCIDENTS AND OTHER UNFORESEEN EMERGENCY CONDITIONS MAY REQUIRE THE ENGINEER TO RESTRICT, MODIFY OR REMOVE LANE CLOSURES OF CHANNELIZATION SHOWN IN THE PLANS. THE CONTRACTOR SHALL MAKE THE NECESSARY ADJUSTMENTS AS DIRECTED BY THE ENGINEER WITHOUT DELAY. THE CONTRACTOR SHALL RESPOND TO ANY REQUEST MADE BY THE ENGINEER FOR CORRECTION WITHIN TWO HOURS FROM THE TIME OF NOTIFICATION.
- ALL TEMPORARY PAVEMENT MARKINGS PROPOSED WITHIN THE WORK AREA SHALL BE COMPLETED PRIOR TO THE CONSTRUCTION PHASE CHANGE.


COMMITMENTS

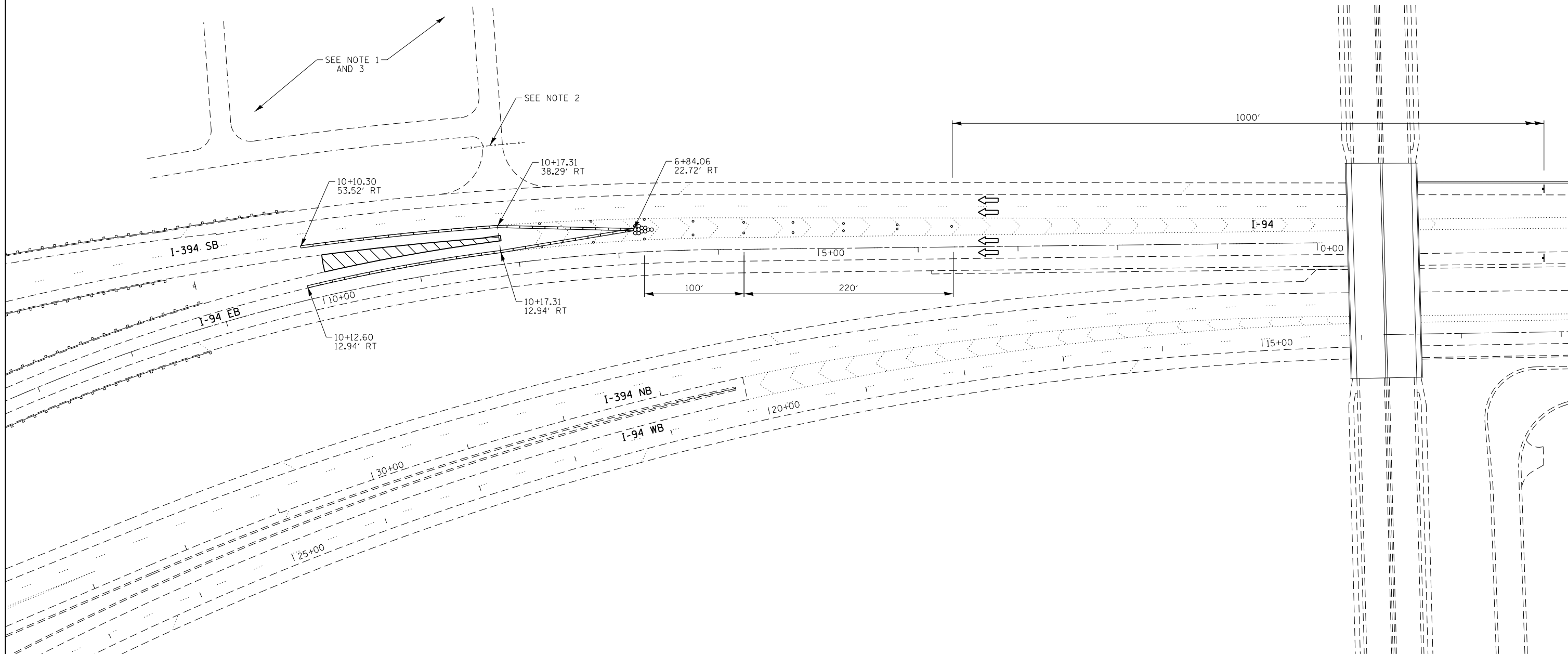
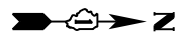
NONE

	USER NAME * MRossier	DESIGNED - TP, GA	REVISED -	STATE OF ILLINOIS DEPARTMENT OF TRANSPORTATION	INDEX OF SHEETS, STATE STANDARDS, AND GENERAL NOTES			F.A.I RTE.	SECTION	COUNTY	TOTAL SHEETS	SHEET NO.
	PLOT SCALE * 2,000' / in.	DRAWN - MR	REVISED -		94	0203.1(R-28.3H)	COOK	10	2			
	PLOT DATE * 4/5/2013	CHECKED - TP	REVISED -		SCALE: NONE		SHEET 1	OF 1	SHEETS	STA.	TO STA.	CONTRACT NO. 60W48
											ILLINOIS FED. AID PROJECT	

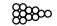



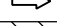
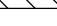
CODE NO.	ITEM	UNIT	TOTAL QUANTITY	CONSTRUCTION CODE							
				100% STATE							
				ROADWAY							
				0021							
URBAN											
20200100	EARTH EXCAVATION	CU YD	186								
25000310	SEEDING, CLASS 4	ACRE	0.1								
25100630	EROSION CONTROL BLANKET	SO YD	209								
28000400	PERIMETER EROSION BARRIER	FOOT	20								
31101810	SUBBASE GRANULAR MATERIAL, TYPE B 12"	SO YD	209								
31200110	STABILIZED SUBBASE 6"	SO YD	209								
48300820	PORTLAND CEMENT CONCRETE SHOULDERS 14"	SO YD	209								
67100100	MOBILIZATION	L SUM	1								
70300240	TEMPORARY PAVEMENT MARKING - LINE 6"	FOOT	675								
70400100	TEMPORARY CONCRETE BARRIER	FOOT	675								
70600250	IMPACT ATTENUATORS, TEMPORARY (NON-REDIRECTIVE), TEST LEVEL 3	EACH	1								
* 78008210	POLYUREA PAVEMENT MARKING TYPE I - LINE 4"	FOOT	360								
* 78008250	POLYUREA PAVEMENT MARKING TYPE I - LINE 12"	FOOT	320								
* 78200530	BARRIER WALL MARKERS, TYPE C	EACH	108								

*specialty Items

	USER NAME * tpoelichu	DESIGNED - TP, GA	REVISED -	STATE OF ILLINOIS DEPARTMENT OF TRANSPORTATION	SUMMARY OF QUANTITIES				F.A.I. RTE.	SECTION	COUNTY	TOTAL SHEETS	SHEET NO.
	PLOT SCALE * 2.0000' / 1"	DRAWN - MR	REVISED -						94	0203.1(R-2&3)	COOK	10	3
	PLOT DATE * 4/9/2013	CHECKED - TP	REVISED -		SCALE: SHEET 1 OF 2 SHEETS STA. TO STA.				CONTRACT NO. 60W48				
		DATE - 04/01/2013	REVISED -						ILLINOIS FED. AID PROJECT				



LEGEND

-  IMPACT ATTENUATOR
-  DRUM WITH STEADY BURN MONO-DIRECTIONAL LIGHT (SPACED AT 50' C-C)
-  APPROACH SIGNAGE PER IDOT DISTRICT 1 STANDARD TC-17
-  TEMP. CONC. BARR. WALL WITH TYPE C REFLECTORS
-  TRAFFIC FLOW DIRECTION
-  WORK AREA

NOTES:

1. EARTH EXCAVATION SHALL NOT BE HAULED OFFSITE BUT PLACED IN THIS LOCATION. COVER WITH SEEDING CLASS 4 AND EROSION CONTROL BLANKET. COST SHALL BE INCLUDED WITH THE PAY ITEM "EARTH EXCAVATION".
2. CONTRACTOR SHALL OBTAIN KEY TO GATE FROM MAINTENANCE YARD.
3. CONTRACTOR SHALL AVOID PLACING FILL OR OPERATING HEAVY EQUIPMENT WITHIN 10 FEET OF ANY RECENTLY PLANTED TREES.



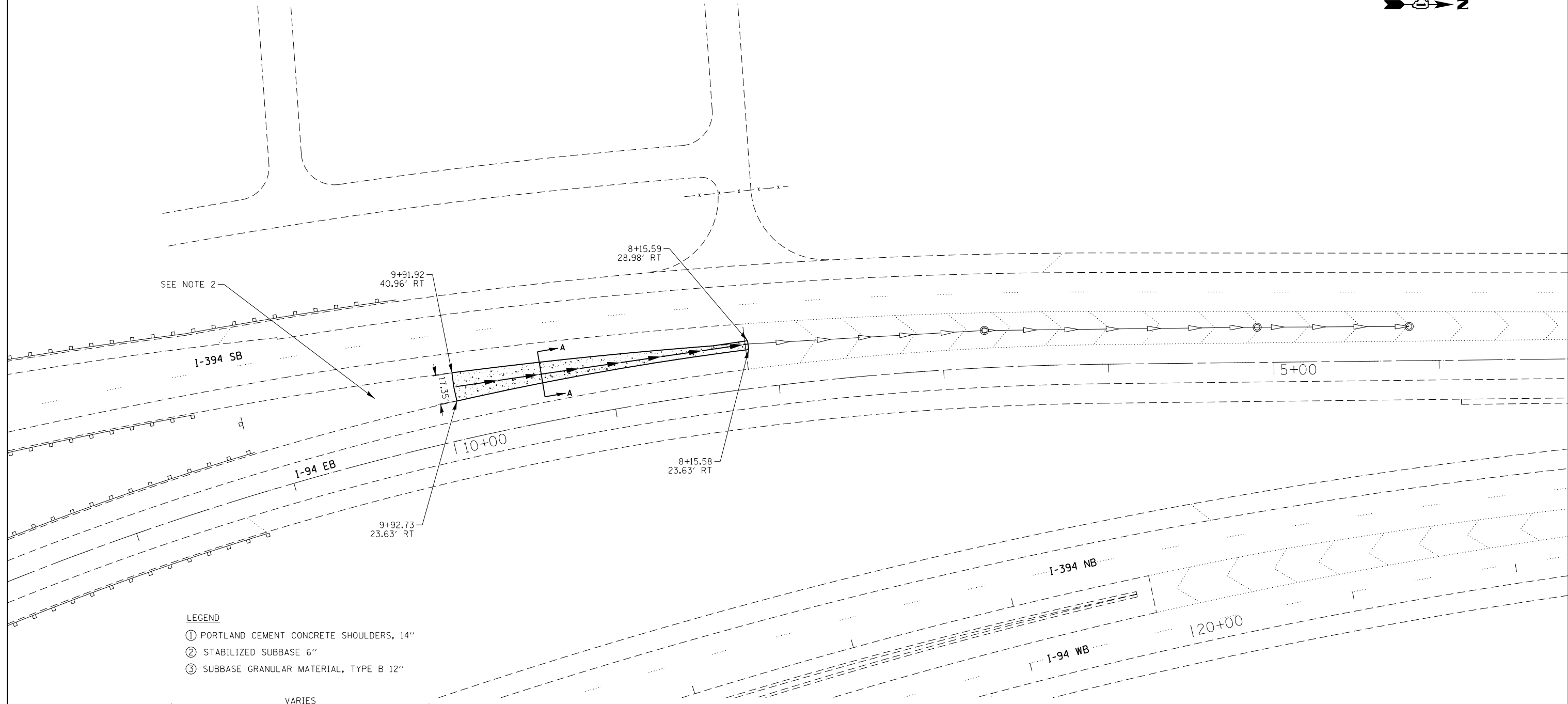
USER NAME = MRoeseler	DESIGNED - TP, GA	REVISED -
PLOT SCALE = 100.0000' / in.	DRAWN - MR	REVISED -
PLOT DATE = 4/5/2013	CHECKED - TP	REVISED -
	DATE - 04/01/2013	REVISED -

STATE OF ILLINOIS
DEPARTMENT OF TRANSPORTATION

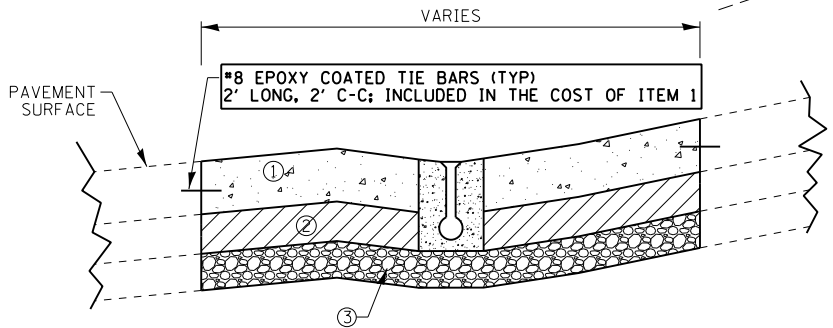
SUGGESTED MAINTENANCE OF TRAFFIC

SCALE: 1"=50' SHEET 1 OF 1 SHEETS STA. TO STA.

F.A.I. RTE.	SECTION	COUNTY	TOTAL SHEETS	SHEET NO.
94	0203.1(R-2&3)I	COOK	10	5
CONTRACT NO. 60W48				
ILLINOIS FED. AID PROJECT				



- LEGEND**
- ① PORTLAND CEMENT CONCRETE SHOULDERS, 14"
 - ② STABILIZED SUBBASE 6"
 - ③ SUBBASE GRANULAR MATERIAL, TYPE B 12"



GORE PAVEMENT SECTION A-A

- NOTES:**
1. SUBBASE GRANULAR MATERIAL, TYPE B 12" SHALL CONSIST OF A 3" CAP AND 9" BASE.
 2. EXISTING GRANULAR MATERIAL IN THIS AREA SHALL BE REGRADED AND COMPACTED AS DIRECTED BY THE ENGINEER. COST SHALL BE INCLUDED WITH THE PAY ITEM "EARTH EXCAVATION".



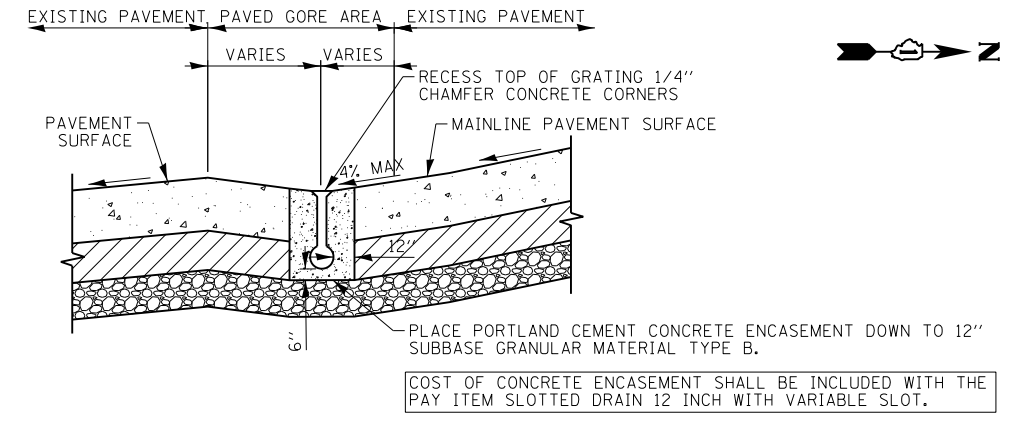
USER NAME = MRoeseler	DESIGNED - TP, GA	REVISED -
PLOT SCALE = 60.0000' / in.	DRAWN - MR	REVISED -
PLOT DATE = 4/5/2013	CHECKED - TP	REVISED -
	DATE - 04/01/2013	REVISED -

**STATE OF ILLINOIS
DEPARTMENT OF TRANSPORTATION**

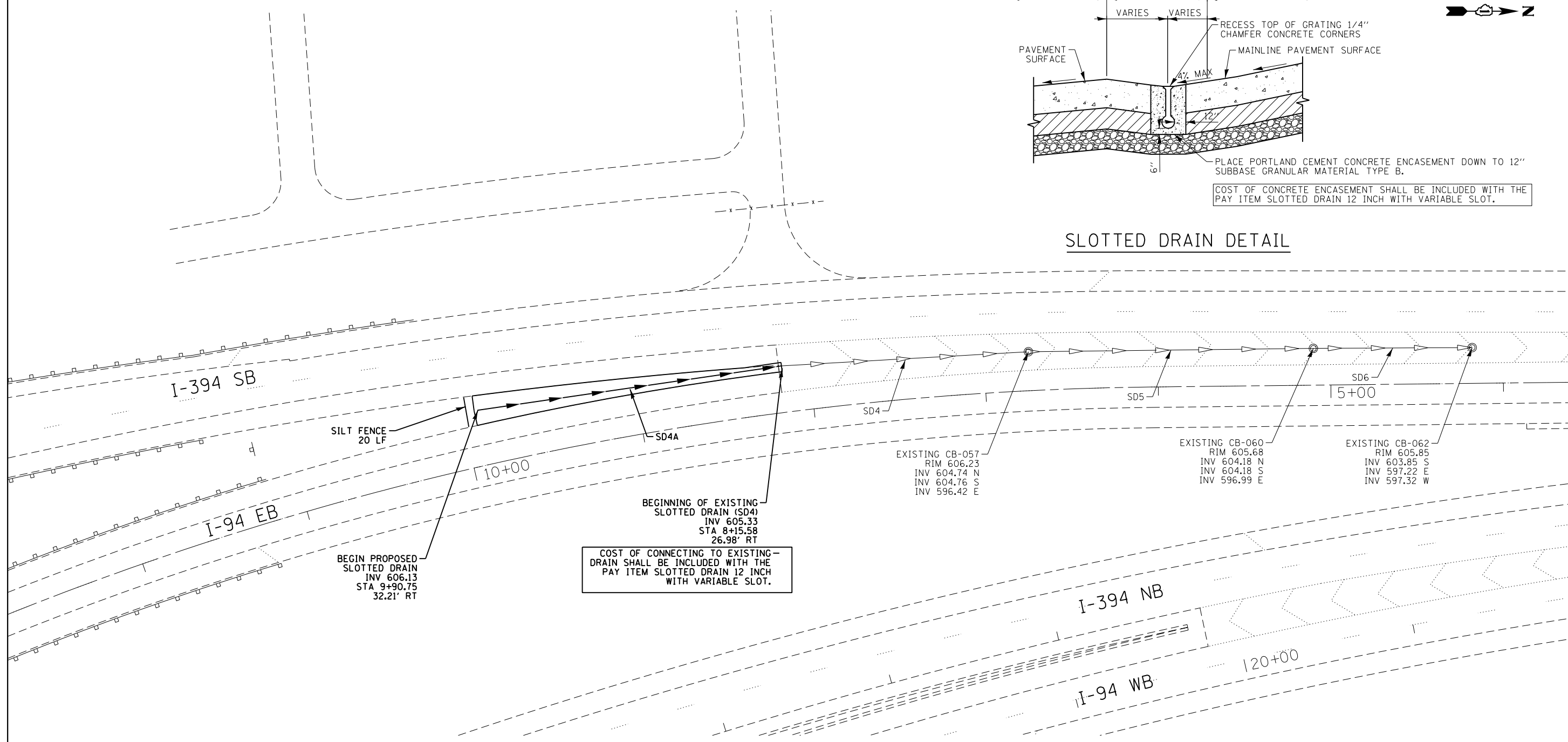
PAVING PLAN

SCALE: 1" = 30' SHEET 1 OF 1 SHEETS STA. TO STA.

F.A.I. RTE.	SECTION	COUNTY	TOTAL SHEETS	SHEET NO.
94	0203.1(R-2&3)I	COOK	10	6
CONTRACT NO. 60W48				
ILLINOIS FED. AID PROJECT				



SLOTTED DRAIN DETAIL



BEGIN PROPOSED SLOTTED DRAIN
INV 606.13
STA 9+90.75
32.21' RT

COST OF CONNECTING TO EXISTING DRAIN SHALL BE INCLUDED WITH THE PAY ITEM SLOTTED DRAIN 12 INCH WITH VARIABLE SLOT.

BEGINNING OF EXISTING SLOTTED DRAIN (SD4)
INV 605.33
STA 8+15.58
26.98' RT

EXISTING CB-057
RIM 606.23
INV 604.74 N
INV 604.76 S
INV 596.42 E

EXISTING CB-060
RIM 605.68
INV 604.18 N
INV 604.18 S
INV 596.99 E

EXISTING CB-062
RIM 605.85
INV 603.85 S
INV 597.22 E
INV 597.32 W

PROPOSED SLOTTED DRAIN

PIPE NUMBER	DIAMETER (INCHES)	HEIGHT	LENGTH (FEET)	SLOPE (%)	COMMENTS
SD4A	12	VARIABLE	178	0.45	PROPOSED SLOTTED DRAIN CONNECTS INTO EXISTING SLOTTED DRAIN, MATCH EXISTING INVERT ELEVATION, FLOW RUNS TO THE NORTH

NOTES:

- THE SLOTTED DRAIN SHALL BE 12" DIAMETER WITH SLOT WIDTH OF 1-3/4", SPACER BARS SHALL BE 3/16" SOLID WEB SPACERS ON 6" CENTERS FOR THE FULL LENGTH OF THE GRATING.
- THE UPSTREAM END OF THE SLOTTED DRAIN INSTALLATION SHALL BE SEALED WITH A WELDED END PLATE IN ACCORDANCE WITH MANUFACTURER'S SPECIFICATIONS.
- THE SLOTTED DRAIN SHALL BE INSTALLED IN A TRENCH EXCAVATED TO THE REQUIRED GRADE, AS SHOWN IN THE SECTIONS, WIDE ENOUGH TO ACCOMMODATE PIPEDRAIN. IF TRENCH IS EXCAVATED TOO DEEP, ADDITIONAL DEPTH SHALL BE FILLED WITH APPROVED FINE AGGREGATE AND COMPACTED TO THE SATISFACTION OF THE ENGINEER AT NO ADDITIONAL COST.
- PRIOR TO BACKFILLING THE SLOTTED DRAIN SHALL BE COVERED TO PREVENT THE INTRUSION OF FOREIGN MATERIAL DURING BACKFILLING AND PAVING OPERATIONS. COST SHALL BE INCLUDED WITH THE PAY ITEM "SLOTTED DRAIN 12 INCH WITH VARIABLE SLOT".

EXISTING SLOTTED DRAIN

PIPE NUMBER	DIAMETER (INCHES)	HEIGHT	LENGTH (FEET)	SLOPE (%)	COMMENTS
SD4	12	VARIABLE	143	0.40	SLOTTED DRAIN RUNS NORTH FROM SLOTTED DRAIN END TO STRUCTURE CB-057
SD5	12	VARIABLE	165	0.34	SLOTTED DRAIN RUNS NORTH FROM STRUCTURE CB-057 TO STRUCTURE CB-060
SD6	12	VARIABLE	92	0.36	SLOTTED DRAIN RUNS NORTH FROM STRUCTURE CB-060 TO STRUCTURE CB-062



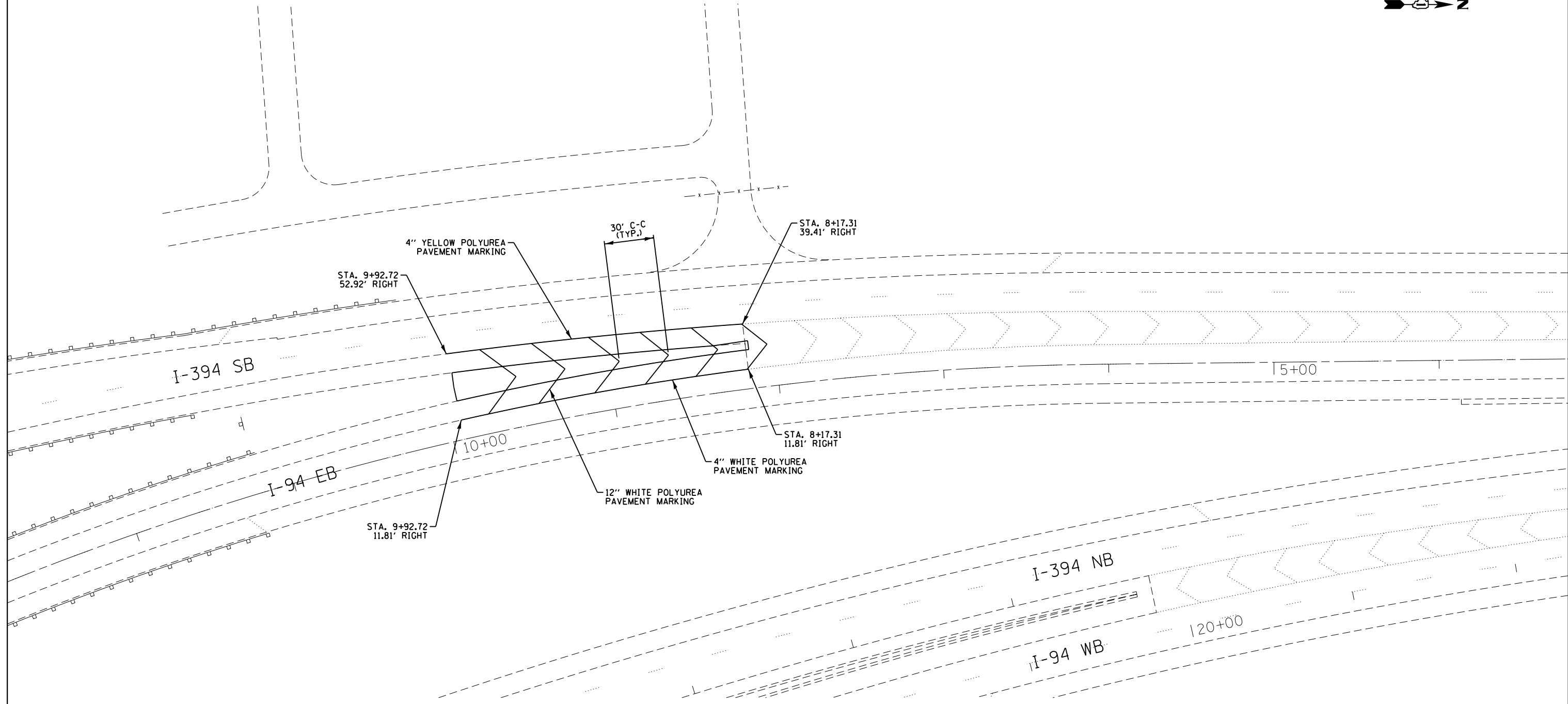
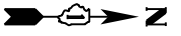
USER NAME = MRoeseler	DESIGNED - TP, GA	REVISED -
PLOT SCALE = 60.0000' / in.	DRAWN - MR	REVISED -
PLOT DATE = 4/5/2013	CHECKED - TP	REVISED -
	DATE - 04/01/2013	REVISED -

**STATE OF ILLINOIS
DEPARTMENT OF TRANSPORTATION**

DRAINAGE PLAN

SCALE: 1" = 30' SHEET 1 OF 1 SHEETS STA. TO STA.

F.A.I. RTE.	SECTION	COUNTY	TOTAL SHEETS	SHEET NO.
94	0203.1(R-2&3)I	COOK	10	7
CONTRACT NO. 60W48				
ILLINOIS FED. AID PROJECT				



NOTES:
 1. REFER TO IDOT DISTRICT 1 STANDARD TC-13 FOR ADDITIONAL INFORMATION.



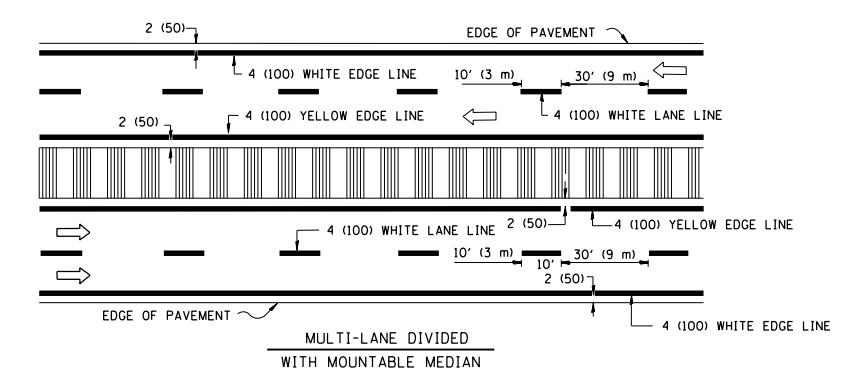
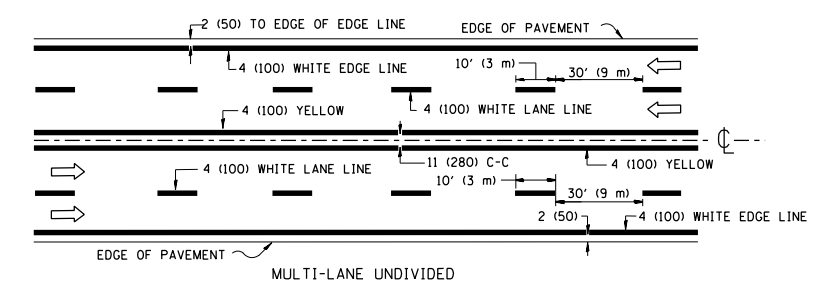
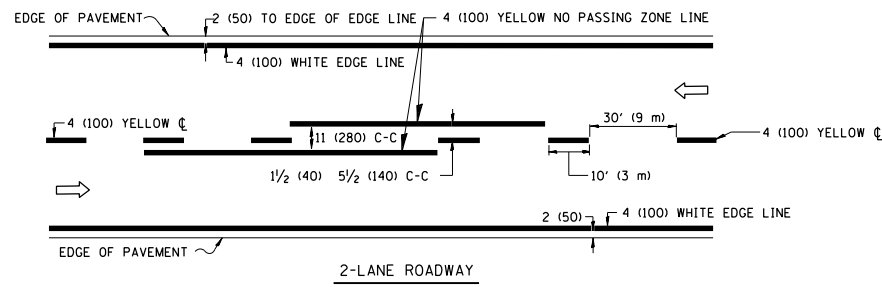
USER NAME = MRoeseler	DESIGNED - TP, GA	REVISED -
	DRAWN - MR	REVISED -
PLOT SCALE = 60.0000' / in.	CHECKED - TP	REVISED -
PLOT DATE = 4/5/2013	DATE - 04/01/2013	REVISED -

**STATE OF ILLINOIS
 DEPARTMENT OF TRANSPORTATION**

PAVEMENT MARKING PLAN

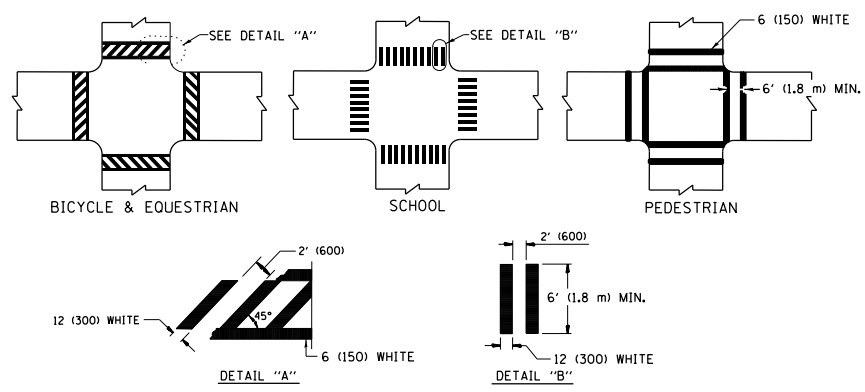
SCALE: 1" = 30' SHEET 1 OF 1 SHEETS STA. TO STA.

F.A.I. RTE.	SECTION	COUNTY	TOTAL SHEETS	SHEET NO.
94	0203.1(R-2&3)I	COOK	10	8
CONTRACT NO. 60W48				
ILLINOIS FED. AID PROJECT				

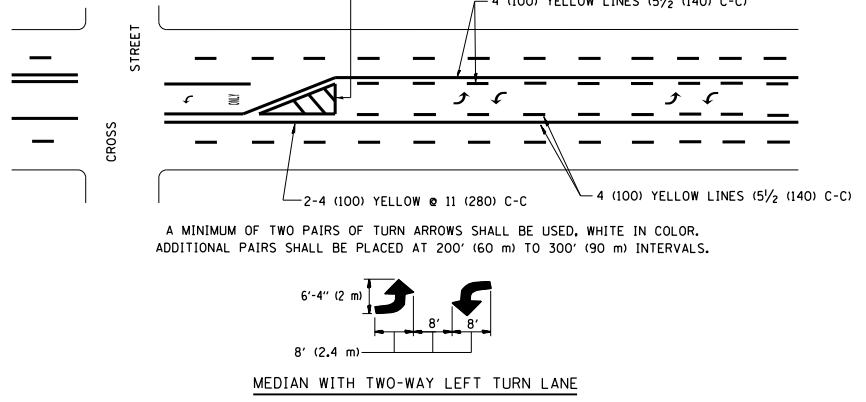
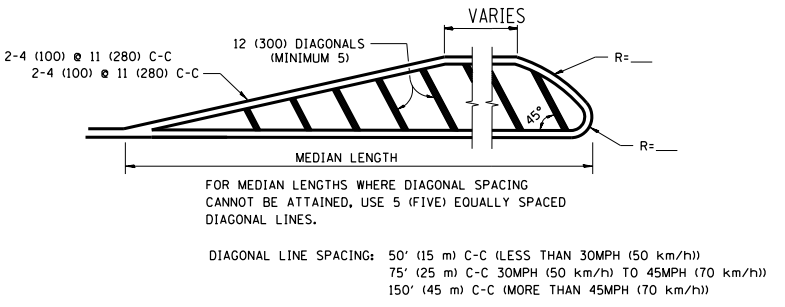
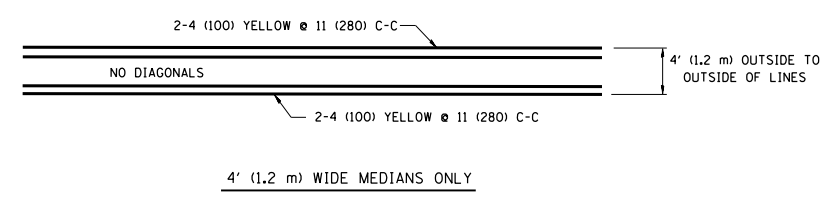


NOTE: MEDIANS WITH BARRIER CURB DO NOT REQUIRE AN EDGE LINE

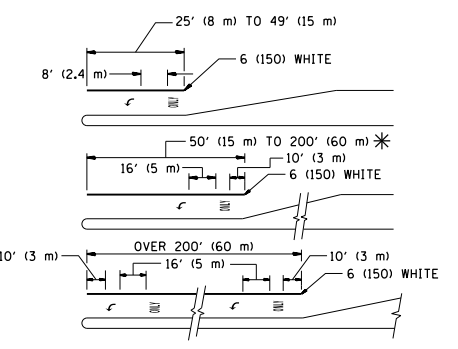
TYPICAL LANE AND EDGE LINE MARKING



TYPICAL CROSSWALK MARKING

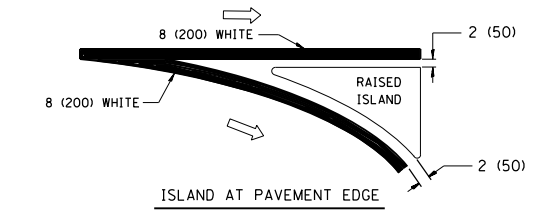
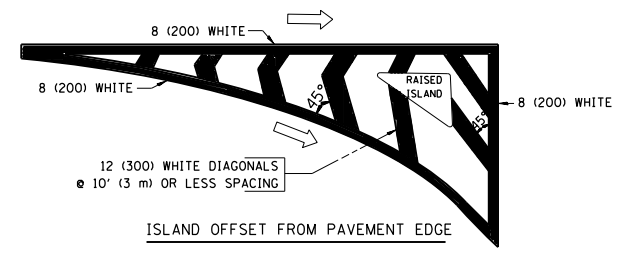


TYPICAL PAINTED MEDIAN MARKING



FULL SIZE LETTERS 8' (2.4 m) AND ARROWS SHALL BE USED.
 AREA = 15.6 SQ. FT. (1.5 m²) ONLY AREA = 20.8 SQ. FT. (1.9 m²)
 * TURN LANES IN EXCESS OF 400' (120 m) IN LENGTH MAY HAVE AN ADDITIONAL SET OF ARROW - "ONLY" INSTALLED MIDWAY BETWEEN THE OTHER TWO SETS OF ARROW - "ONLY".

TYPICAL TURN LANE MARKING



TYPICAL ISLAND MARKING

TYPE OF MARKING	WIDTH OF LINE	PATTERN	COLOR	SPACING / REMARKS
CENTERLINE ON 2 LANE PAVEMENT	4 (100)	SKIP-DASH	YELLOW	10' (3 m) LINE WITH 30' (9 m) SPACE
CENTERLINE ON MULTI-LANE UNDIVIDED PAVEMENT	2 @ 4 (100)	SOLID	YELLOW	11 (280) C-C
NO PASSING ZONE LINES: FOR ONE DIRECTION	4 (100)	SOLID	YELLOW	5 1/2 (140) C-C FROM SKIP-DASH CENTERLINE
NO PASSING ZONE LINES: FOR BOTH DIRECTIONS	2 @ 4 (100)	SOLID	YELLOW	11 (280) C-C OMIT SKIP-DASH CENTERLINE BETWEEN
LANE LINES	4 (100) 5 (125) ON FREEWAYS	SKIP-DASH SKIP-DASH	WHITE WHITE	10' (3 m) LINE WITH 30' (9 m) SPACE
DOTTED LINES (EXTENSIONS OF CENTER, LANE OR TURN LANE MARKINGS)	SAME AS LINE BEING EXTENDED	SKIP-DASH	SAME AS LINE BEING EXTENDED	2' (600) LINE WITH 6' (1.8 m) SPACE
EDGE LINES	4 (100)	SOLID	YELLOW-LEFT WHITE-RIGHT	OUTLINE MOUNTABLE MEDIANS IN YELLOW; EDGE LINES ARE NOT USED NEXT TO BARRIER CURB
TURN LANE MARKINGS	6 (150) LINE; FULL SIZE LETTERS & SYMBOLS (8' (2.4m))	SOLID	WHITE	SEE TYPICAL TURN LANE MARKING DETAIL
TWO WAY LEFT TURN MARKING	2 @ 4 (100) EACH DIRECTION 8' (2.4m) LEFT ARROW	SKIP-DASH AND SOLID IN PAIRS	YELLOW WHITE	10' (3 m) LINE WITH 30' (9 m) SPACE FOR SKIP-DASH; 5 1/2 (140) C-C BETWEEN SOLID LINE AND SKIP-DASH LINE. SEE TYPICAL TWO-WAY LEFT TURN MARKING DETAIL
CROSSWALK LINES (PEDESTRIAN) A. DIAGONALS (BIKE & EQUESTRIAN) B. LONGITUDINAL BARS (SCHOOL)	2 @ 6 (150) 12 (300) @ 45° 12 (300) @ 90°	SOLID SOLID SOLID	WHITE WHITE WHITE	NOT LESS THAN 6' (1.8 m) APART 2' (600) APART 2' (600) APART SEE TYPICAL CROSSWALK MARKING DETAILS.
STOP LINES	24 (600)	SOLID	WHITE	PLACE 4' (1.2 m) IN ADVANCE OF AND PARALLEL TO CROSSWALK, IF PRESENT. OTHERWISE, PLACE AT DESIRED STOPPING POINT, PARALLEL TO CROSSROAD CENTERLINE, WHERE POSSIBLE
PAINTED MEDIANS	2 @ 4 (100) WITH 12 (300) DIAGONALS @ 45° NO DIAGONALS USED FOR 4' (1.2 m) WIDE MEDIANS	SOLID	YELLOW; TWO WAY TRAFFIC WHITE; ONE WAY TRAFFIC	11 (280) C-C FOR THE DOUBLE LINE. SEE TYPICAL PAINTED MEDIAN MARKING.
GORE MARKING AND CHANNELIZING LINES	8 (200) WITH 12 (300) DIAGONALS @ 45°	SOLID	WHITE	DIAGONALS: 15' (4.5 m) C-C (LESS THAN 30MPH (50 km/h)) 20' (6 m) C-C 30MPH (50 km/h) TO 45MPH (70 km/h)) 30' (9 m) C-C (OVER 45MPH (70 km/h))
RAILROAD CROSSING	24 (600) TRANSVERSE LINES; "RR" 15 6' (1.8 m) LETTERS; 16 (400) LINE FOR "X"	SOLID	WHITE	SEE STATE STANDARD 780001 AREA OF: "R": 3.6 SQ. FT. (0.33 m ²) EACH "X": 54.0 SQ. FT. (5.0 m ²) EACH
SHOULDER DIAGONALS	12 (300) @ 45°	SOLID	WHITE - RIGHT YELLOW - LEFT	50' (15 m) C-C (LESS THAN 30MPH (50 km/h)) 75' (25 m) C-C (30 MPH (50 km/h) TO 45MPH (70 km/h)) 150' (45 m) C-C (OVER 45MPH (70 km/h))

FOR FURTHER DETAILS ON PAVEMENT MARKING REFER TO STANDARD SPECIFICATIONS FOR ROAD AND BRIDGE CONSTRUCTION AND STATE STANDARD 780001.

All dimensions are in inches (millimeters) unless otherwise shown.

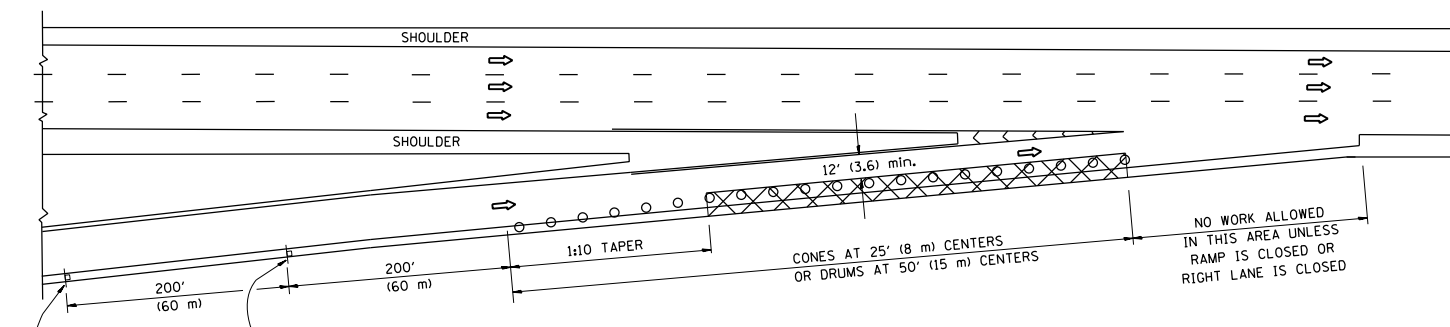
FILE NAME = tc13.dgn	USER NAME = MRoeseler	DESIGNED - EVERS	REVISED -T. RAMMACHER 10-27-94
		DRAWN -	REVISED -C. JUCIUS 09-09-09
	PLOT SCALE = 100.000 / in.	CHECKED -	REVISED -
	PLOT DATE = 4/5/2013	DATE - 03-19-90	REVISED -

**STATE OF ILLINOIS
DEPARTMENT OF TRANSPORTATION**

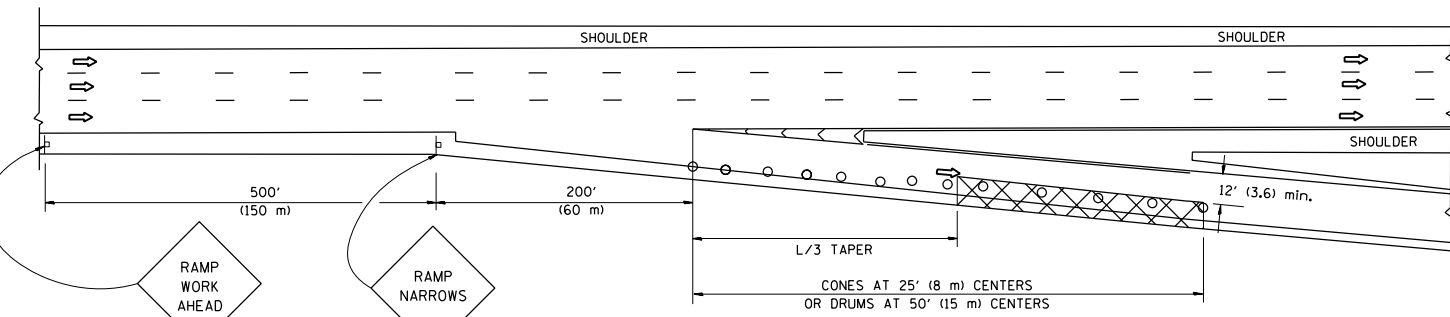
DISTRICT ONE			
TYPICAL PAVEMENT MARKINGS			
SCALE: NONE	SHEET NO. 1 OF 1 SHEETS	STA. TO STA.	

F.A.I R.T.E.	SECTION	COUNTY	TOTAL SHEETS	SHEET NO.
94	0203.1(R-2&3)I	COOK	10	9
TC-13		CONTRACT NO. 60W48		
FED. ROAD DIST. NO. 1 ILLINOIS FED. AID PROJECT				

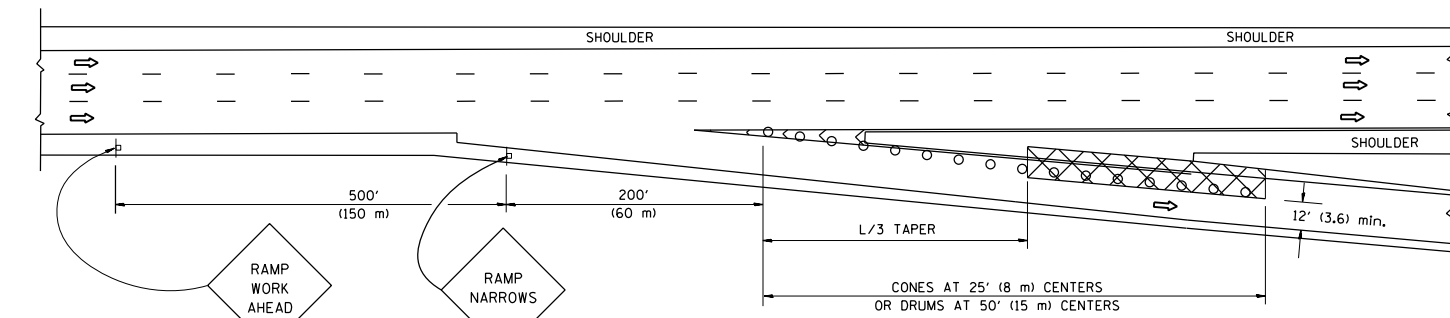
PARTIAL RAMP CLOSURE DETAILS



TYPICAL ENTRANCE RAMP



TYPICAL EXIT RAMP



TYPICAL EXIT RAMP

SYMBOLS

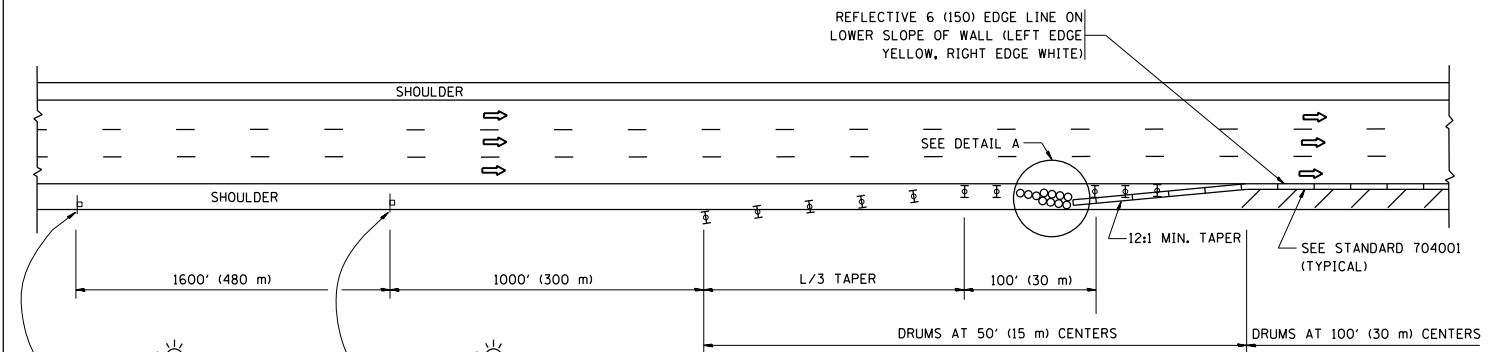
- ACTIVE WORK AREA
- SIGN ON PORTABLE OR PERMANENT SUPPORT
- FLAGGER WITH CONTROL SIGN
- TYPE II BARRICADE, DRUM OR VERTICAL BARRICADE WITH STEADY BURN MONO-DIRECTIONAL LIGHT
- CONE, DRUM OR BARRICADE

GENERAL NOTES

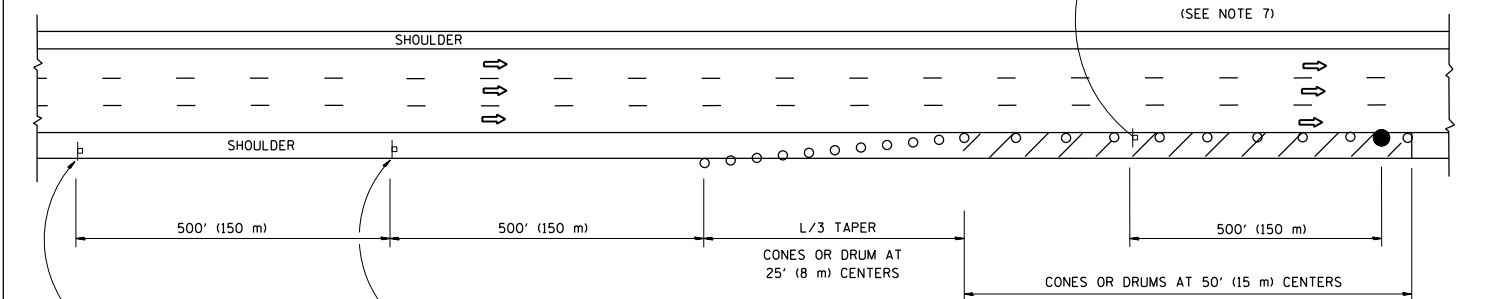
1. THE "L" DISTANCE EQUALS:

SPEED LIMIT	FORMULAS
45 mph (80 km/h) OR GREATER:	METRIC ENGLISH L=0.65(W)(S) L=(W)(S)
W = WIDTH OF OFFSET IN FEET (METERS) S = NORMAL POSTED SPEED MPH (KM/H)	
2. PLASTIC DRUMS WITH HIGH PERFORMANCE REFLECTIVE SHEETING AND STEADY BURNING LIGHTS ARE REQUIRED FOR ALL NIGHTIME CLOSURES.
3. ALL SIGNS SHALL BE POST MOUNTED IF THE CLOSURE TIME EXCEEDS FOUR DAYS.
4. FLASHING LIGHTS SHALL BE USED DURING THE HOURS OF DARKNESS AND SHALL BE INSTALLED ABOVE THE FIRST TWO SETS OF SIGNS.

SHOULDER CLOSURE DETAILS



PERMANENT SHOULDER CLOSURE



DAYTIME SHOULDER CLOSURE

THIS DETAIL IS USED WHERE:
1. VEHICLES, EQUIPMENT, WORKERS OR THEIR ACTIVITIES ENCRANCH IN AN AREA CLOSER THAN 15' (4.5 m) TO THE EDGE OF PAVEMENT FOR A PERIOD IN EXCESS OF 15 MINUTES.

ARRAY DESIGN PER MANUFACTURER TO BE NCHRP 350 COMPLIANT.

DETAIL "A"
IMPACT ATTENUATOR, TEMPORARY
(SEE NOTE 5)

5. THE IMPACT ATTENUATOR, TEMPORARY IS NOT REQUIRED WHEN THE TEMPORARY CONCRETE BARRIER WALL IS PROTECTED BY OR IS TIED INTO THE EXISTING GUARDRAIL. IF OFFSET IS LESS THAN 5 FEET USE NARROW USE TYPE DEVICE TO MEET NCHRP350.
6. AUTHORIZATION FROM THE DISTRICT'S BUREAU OF TRAFFIC IS REQUIRED FOR ALL FREEWAY CLOSURES.
7. THE FLAGGER AND FLAGGER SIGN ARE REQUIRED AT THE ABOVE WORK SITES WHEN:
 - a. FOUR OR MORE WORK VEHICLES ENTER THE TRAFFIC LANES IN A ONE HOUR PERIOD.
 - b. THE WORK AVTIVITY REQUIRES FREQUENT ENCRANCHMENT INTO THE LANE OPEN TO TRAFFIC.
 THE FLAGGER SHALL BE STATIONED APPROXIMATELY 100' (30 m) TO 200' (60 m) IN ADVANCE OF THE WORKERS.

ALL DIMENSIONS ARE IN INCHES (MILLIMETERS) UNLESS OTHERWISE SHOWN.

FILE NAME = tc17.dgn	USER NAME = MRoeseler	DESIGNED -	REVISED - 04-03	STATE OF ILLINOIS DEPARTMENT OF TRANSPORTATION	TRAFFIC CONTROL DETAILS FOR FREEWAY SHOULDER CLOSURES AND PARTIAL RAMP CLOSURES			F.A.I RTE.	SECTION	COUNTY	TOTAL SHEETS	SHEET NO.
	PLOT SCALE = 100.0000' / in.	DRAWN - D.W.S.	REVISED - J.A.F. 12-06		SCALE: NONE	SHEET NO. 1 OF 1 SHEETS	STA.	TO STA.	94	0203.1(R-2&3)I	COOK	10
PLOT DATE = 4/5/2013	CHECKED -	REVISED - S.P.B. 01-07	REVISED - S.P.B. 12-09					TC-17		CONTRACT NO. 60W48		
	DATE - 11-96							FED. ROAD DIST. NO. 1 ILLINOIS FED. AID PROJECT				