

**NOTES FOR TEMPORARY TRAFFIC SIGNALS**

1. ALL CONTROL EQUIPMENT INCLUDING EMERGENCY PRE-EMPTION AND COMMUNICATION DEVICES FOR THE TEMPORARY TRAFFIC SIGNAL(S) SHALL BE FURNISHED BY THE CONTRACTOR.
2. ONLY CONTROLLERS SUPPLIED BY ONE OF THE DISTRICT APPROVED CLOSED LOOP EQUIPMENT MANUFACTURERS WILL BE APPROVED FOR USE AT TEMPORARY SIGNAL LOCATIONS. ALL CONTROLLERS USED FOR TEMPORARY TRAFFIC SIGNALS SHALL BE FULLY ACTUATED NEMA MICROPROCESSOR BASED WITH RS232 DATA ENTRY PORTS COMPATIBLE WITH EXISTING MONITORING SOFTWARE APPROVED BY IDOT DISTRICT 1, INSTALLED IN A NEMA TS2 CABINET. ONLY ONE BRAND OF CONTROLLER WILL BE ACCEPTED FOR ANY ONE CONTRACT.
3. ALL TRAFFIC SIGNAL SECTIONS AND PEDESTRIAN SIGNAL SECTIONS SHALL BE LED AND 12" (300mm) DIAMETER. HEADS SHALL BE PLACED AS INDICATED ON THE TEMPORARY TRAFFIC SIGNAL PLAN OR AS DIRECTED BY THE ENGINEER. PEDESTRIAN SIGNALS SHALL INCLUDE SOLID INTERNATIONAL SYMBOLS. PEDESTRIAN SIGNALS WITH COUNTDOWN TIMERS SHALL BE USED WHEN THE EXISTING INSTALLATION UTILIZES COUNTDOWN TYPE OR AS DIRECTED BY THE ENGINEER. COUNTDOWN TYPE PEDESTRIAN SIGNALS ARE NOT TO BE INSTALLED AT A RAILROAD INTERSECTION. THE CONTRACTOR SHALL FURNISH ENOUGH CABLE SLACK TO RELOCATE HEADS TO ANY POSITION ON THE SPAN WIRE OR AT LOCATIONS ILLUSTRATED ON THE PLANS FOR CONSTRUCTION STAGING. THE TEMPORARY TRAFFIC SIGNAL SHALL REMAIN IN OPERATION DURING ALL SIGNAL HEAD RELOCATIONS. EACH TEMPORARY TRAFFIC SIGNAL HEAD SHALL HAVE ITS OWN CABLE FROM THE CONTROLLER CABINET TO THE SIGNAL HEAD.
4. ALL EXISTING STREET NAME AND INTERSECTION REGULATORY SIGNS SHALL BE REMOVED FROM EXISTING POLES, RELOCATED AND SECURELY FASTENED TO THE SPAN WIRE OR WOOD POLE AS DIRECTED BY THE ENGINEER.
5. ANY TEMPORARY SIGNAL WITHIN AN EXISTING CLOSED LOOP TRAFFIC SIGNAL SYSTEM SHALL BE INTERCONNECTED TO THAT SYSTEM USING SIMILAR BRAND CONTROL EQUIPMENT.
6. THE TEMPORARY TRAFFIC SIGNAL SHALL HAVE THE SIGNAL HEAD DISPLAYS, SIGNAL HEAD PLACEMENTS AND CONTROLLER PHASING MATCH THE EXISTING TRAFFIC SIGNAL, AT THE TIME OF THE TURN ON, IF NO TRAFFIC STAGING IS IN PLACE OR WILL NOT BE STAGED ON THE DAY OF THE TURN ON.
7. UNINTERRUPTIBLE POWER SUPPLY (UPS) SYSTEMS SHALL BE INSTALLED AND MADE OPERATIONAL AT TEMPORARY TRAFFIC SIGNAL INSTALLATIONS WHERE UPS IS INSTALLED AT THE EXISTING TRAFFIC SIGNAL, TEMPORARY TRAFFIC SIGNALS AT RAILROAD INTERSECTIONS, AND TEMPORARY TRAFFIC SIGNALS AT INTERSECTIONS WITH FIRE STATION ACTUATED EMERGENCY VEHICLE PRE-EMPTION, OR WHEN INDICATED ON THE PLANS.
8. TRAFFIC SIGNAL MANAGEMENT SYSTEMS SHALL BE MAINTAINED IN OPERATION AS INDICATED ON THE PLANS OR AS DIRECTED BY THE ENGINEER. REQUIRED EQUIPMENT SHALL BE AS SHOWN ON THE PLANS AND THE CONTRACTOR SHALL PLACE THE EQUIPMENT IN OPERATION TO THE SATISFACTION OF THE ENGINEER AND THE AGENCY RESPONSIBLE FOR THE TRAFFIC SIGNAL MANAGEMENT SYSTEM.

**NOTES FOR TEMPORARY TRAFFIC SIGNALS (CONT)**

9. DETECTION AT TEMPORARY TRAFFIC SIGNALS SHALL BE INCLUDED FOR ALL APPROACHES OF THE INTERSECTION UNLESS INDICATED OTHERWISE ON THE PLANS. THE DETECTION SYSTEM MUST MEET THE SPECIFICATIONS OF DISTRICT 1 AND THE CONTRACTOR SHALL PLACE THE DETECTORS INTO OPERATION TO THE SATISFACTION OF THE ENGINEER.
10. WHEN PAN, TILT, ZOOM CAMERAS ARE INSTALLED AT THE EXISTING INTERSECTION OR ARE CALLED FOR IN THE PLANS, THE CONTRACTOR SHALL BE RESPONSIBLE FOR INSTALLING AND MAINTAINING THE CAMERAS TO THE SATISFACTION OF THE ENGINEER AND THE AGENCY RESPONSIBLE FOR THE CAMERAS.

THE CONTRACTOR SHALL CAREFULLY REMOVE AND STORE THE FOLLOWING ITEMS FOR FUTURE RELOCATION. ANY DAMAGES TO THESE REMOVED ITEMS WILL RESULT IN THE CONTRACTOR TO FULLY REPAIR OR TO PROVIDE THAT NEW ITEM AT THEIR EXPENSE, OR AS DIRECTED BY THE ENGINEER.

- |   |      |   |
|---|------|---|
| 1 | EACH | STEEL MAST ARM ASSEMBLY AND POLE, 30 FT |
| 1 | EACH | PEDESTRIAN PUSH-BUTTON                  |
| 1 | EACH | SIGNAL HEAD, LED, 1-FACE, 5-SECTION     |
| 2 | EACH | SIGNAL HEAD, LED, 1-FACE, 3-SECTION     |

THE FOLLOWING ITEM SHALL BE REMOVED BY THE CONTRACTOR AND SHALL BE DISPOSED OF BY THEM OUTSIDE THE RIGHT-OF-WAY AT THEIR EXPENSE. THE SALVAGE VALUE OF THE REMOVED EQUIPMENT SHALL BE REFLECTED IN THE CONTRACT BID PRICE.

- |   |      |                                     |
|---|------|-------------------------------------|
| 4 | EACH | PEDESTRIAN SIGNAL HEAD, LED, 2-FACE |
|---|------|-------------------------------------|

RESTORATION OF WORK AREA. RESTORATION OF THE TRAFFIC SIGNAL WORK AREA SHALL BE INCIDENTAL TO THE RELATED PAY ITEM SUCH AS FOUNDATION, CONDUIT, HANDHOLE, TRENCH AND BACKFILL, ETC., AND NO EXTRA COMPENSATION SHALL BE ALLOWED. ALL ROADWAY SURFACES SUCH AS SHOULDERS, MEDIANS, SIDEWALKS, PAVEMENT, ETC. SHALL BE REPLACED IN KIND. ALL DAMAGE TO MOWED LAWNS SHALL BE REPLACED WITH AN APPROVED SOD, AND ALL DAMAGE TO UNMOWED FIELDS SHALL BE SEEDED IN ACCORDANCE WITH STANDARD SPECIFICATIONS 252 AND 250 RESPECTIVELY.

FILE NAME =	DESIGNED - BC	REVISED -
...xpri-sht-Mc-Temp-TS-Installation.dgn	DRAWN - BC	REVISED -
USER NAME = oship	CHECKED -	REVISED -
PLOT DATE = 2/19/2013	DATE -	REVISED -

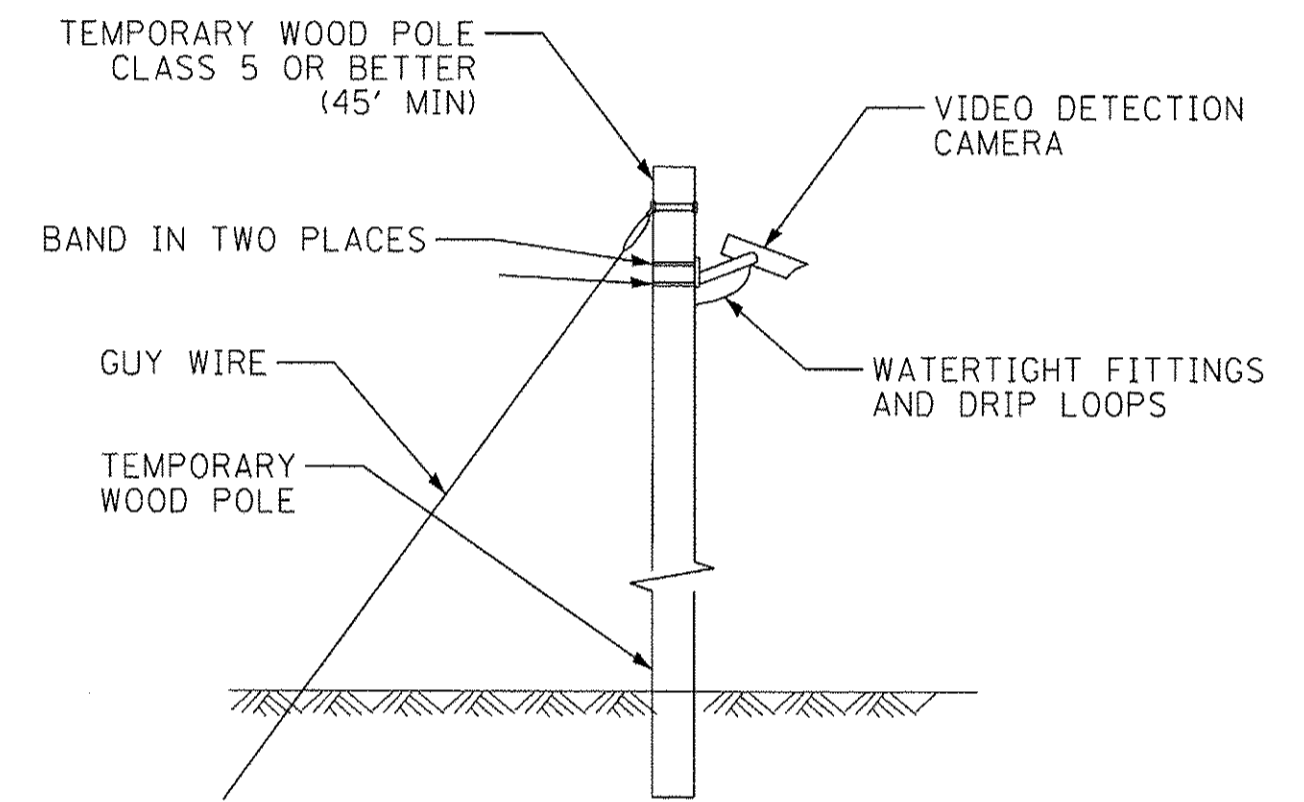
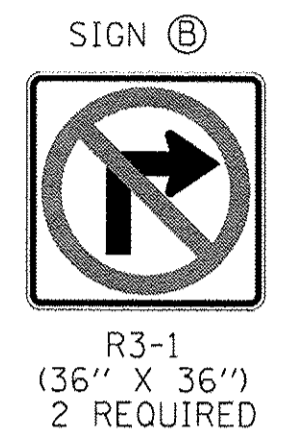
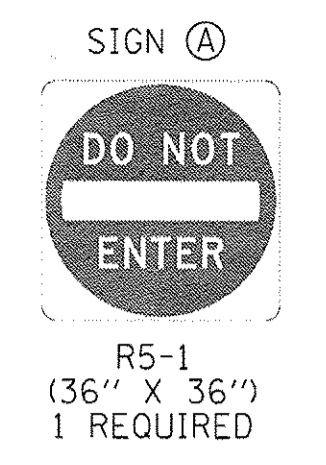
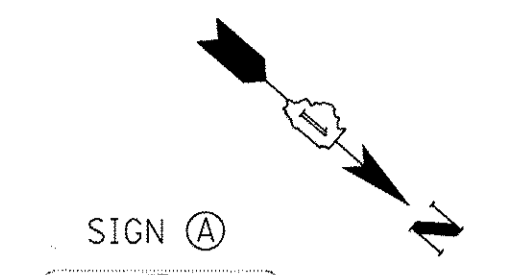
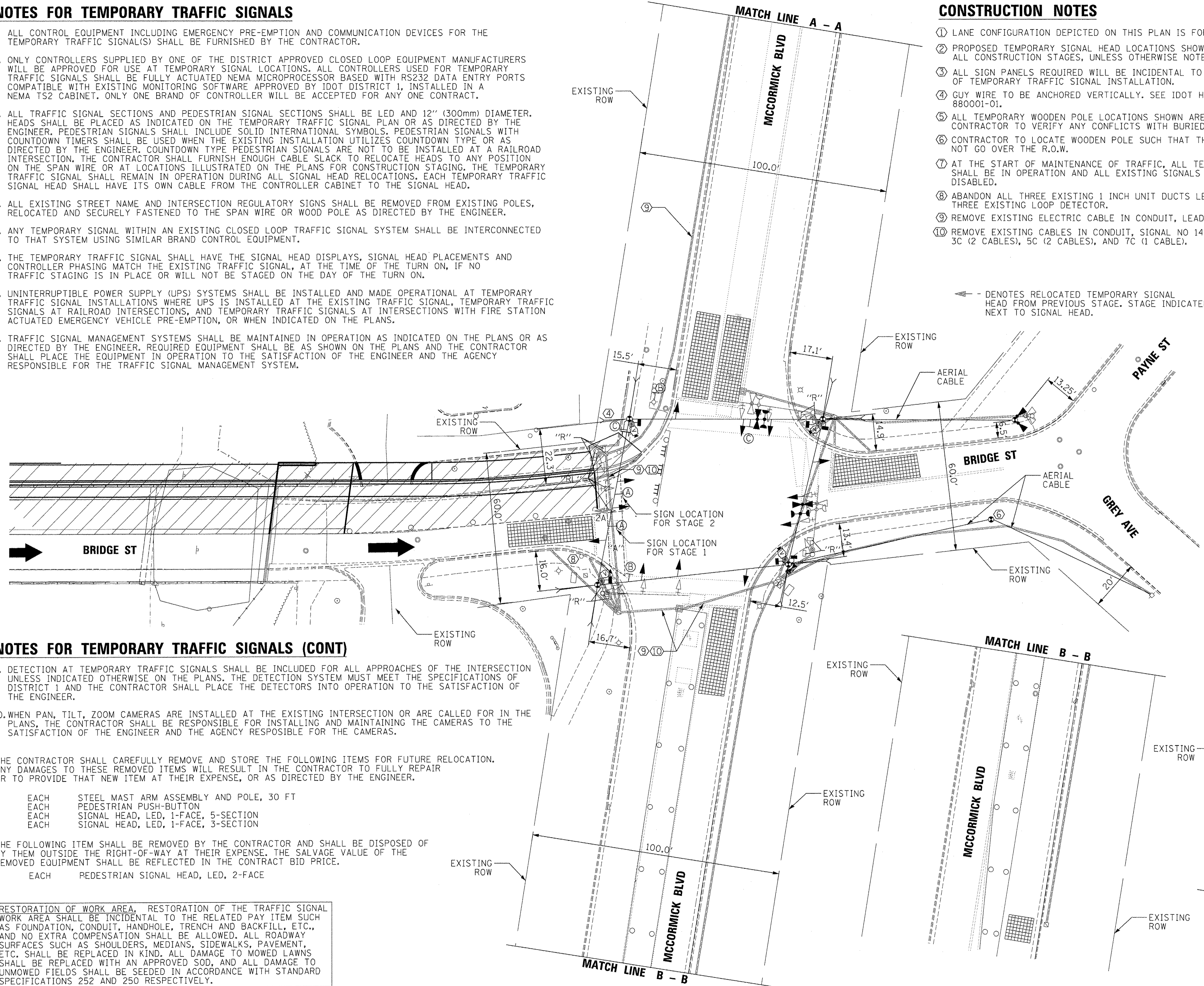


STATE OF ILLINOIS  
DEPARTMENT OF TRANSPORTATION

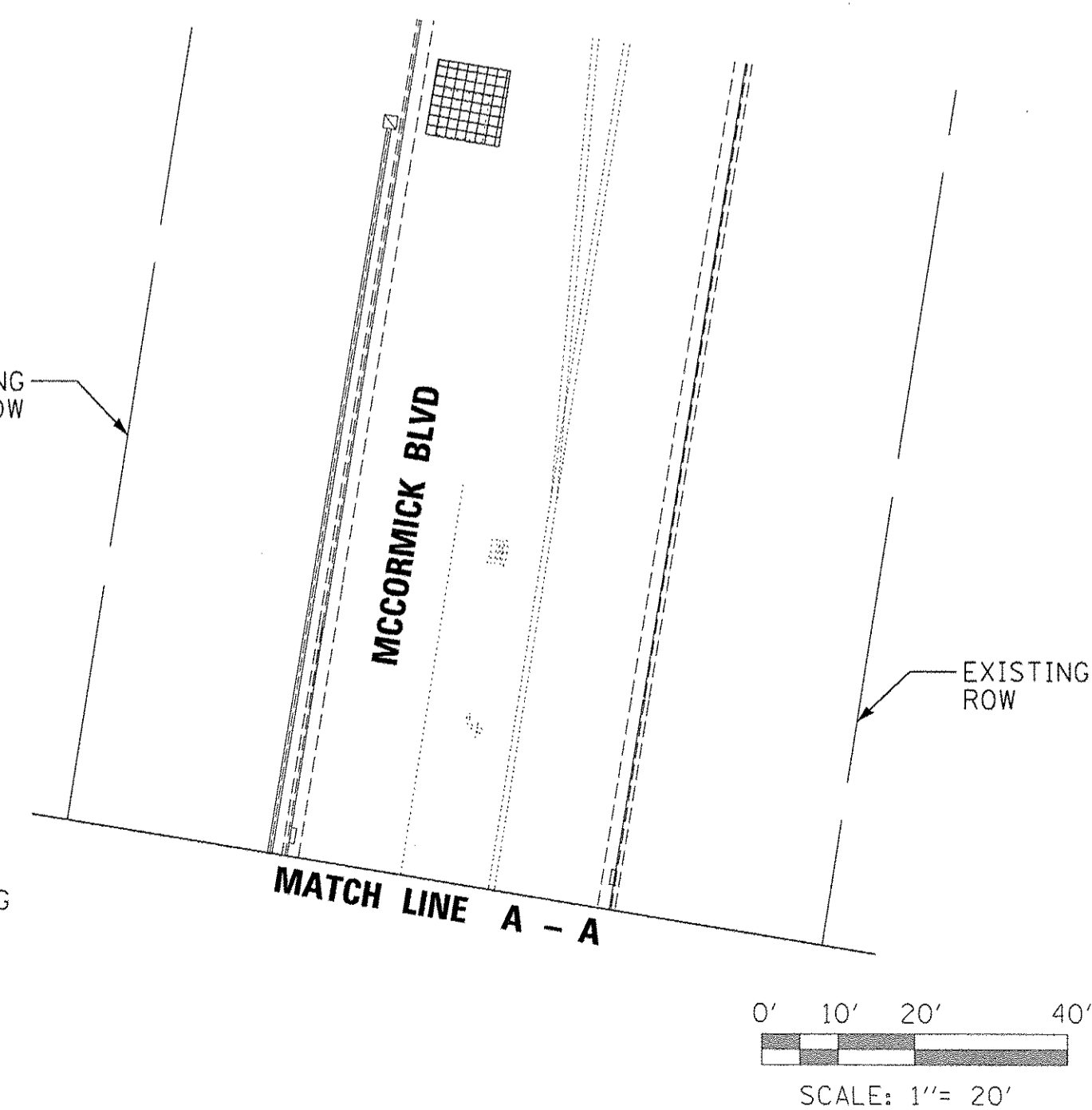
**CONSTRUCTION NOTES**

- ① LANE CONFIGURATION DEPICTED ON THIS PLAN IS FOR STAGE 1.
- ② PROPOSED TEMPORARY SIGNAL HEAD LOCATIONS SHOWN WILL BE FOR ALL CONSTRUCTION STAGES, UNLESS OTHERWISE NOTED.
- ③ ALL SIGN PANELS REQUIRED WILL BE INCIDENTAL TO THE COST OF TEMPORARY TRAFFIC SIGNAL INSTALLATION.
- ④ GUY WIRE TO BE ANCHORED VERTICALLY. SEE IDOT HIGHWAY STANDARD 880001-01.
- ⑤ ALL TEMPORARY WOODEN POLE LOCATIONS SHOWN ARE APPROXIMATE. CONTRACTOR TO VERIFY ANY CONFLICTS WITH BURIED UTILITY OWNERS.
- ⑥ CONTRACTOR TO LOCATE WOODEN POLE SUCH THAT THE AERIAL CABLE DOES NOT GO OVER THE R.O.W.
- ⑦ AT THE START OF MAINTENANCE OF TRAFFIC, ALL TEMPORARY SIGNALS AND SHALL BE IN OPERATION AND ALL EXISTING SIGNALS SHALL BE BAGGED AND DISABLED.
- ⑧ ABANDON ALL THREE EXISTING 1 INCH UNIT DUCTS LEADING TO THE THREE EXISTING LOOP DETECTOR.
- ⑨ REMOVE EXISTING ELECTRIC CABLE IN CONDUIT, LEAD-IN, NO. 14 1 PAIR.
- ⑩ REMOVE EXISTING CABLES IN CONDUIT, SIGNAL NO 14 2C (1 CABLE), 3C (2 CABLES), 5C (2 CABLES), AND 7C (1 CABLE).

← DENOTES RELOCATED TEMPORARY SIGNAL HEAD FROM PREVIOUS STAGE. STAGE INDICATED NEXT TO SIGNAL HEAD.



**TEMPORARY VIDEO DETECTION MOUNTING DETAIL**  
(NOT TO SCALE)



0' 10' 20' 40'  
SCALE: 1" = 20'

<b>TEMPORARY TRAFFIC SIGNAL INSTALLATION AND REMOVE EXISTING TRAFFIC SIGNAL EQUIPMENT PLAN</b>			
<b>MCCORMICK BLVD AND BRIDGE ST, EVANSTON, IL</b>			
SCALE: 1" = 20'	SHEET NO.	OF SHEETS	STA. TO STA.

F.A.I. RTE.	SECTION	COUNTY	TOTAL SHEETS	SHEET NO.
	08-00251-00-BR	COOK	118	37
				CONTRACT NO. 63817
ILLINOIS/FED. AID PROJECT				

PLOT SCALE: 1:220  
 R:\Projects\2013\02-19-13\08-00251-00-BR\Phase 1\General\10085\_Civil\_Plan\_Tables.tbl  
 R:\Projects\2013\02-19-13\08-00251-00-BR\Phase 1\General\10085\_Civil\_Plan\_Tables.tbl