

GENERAL NOTES:

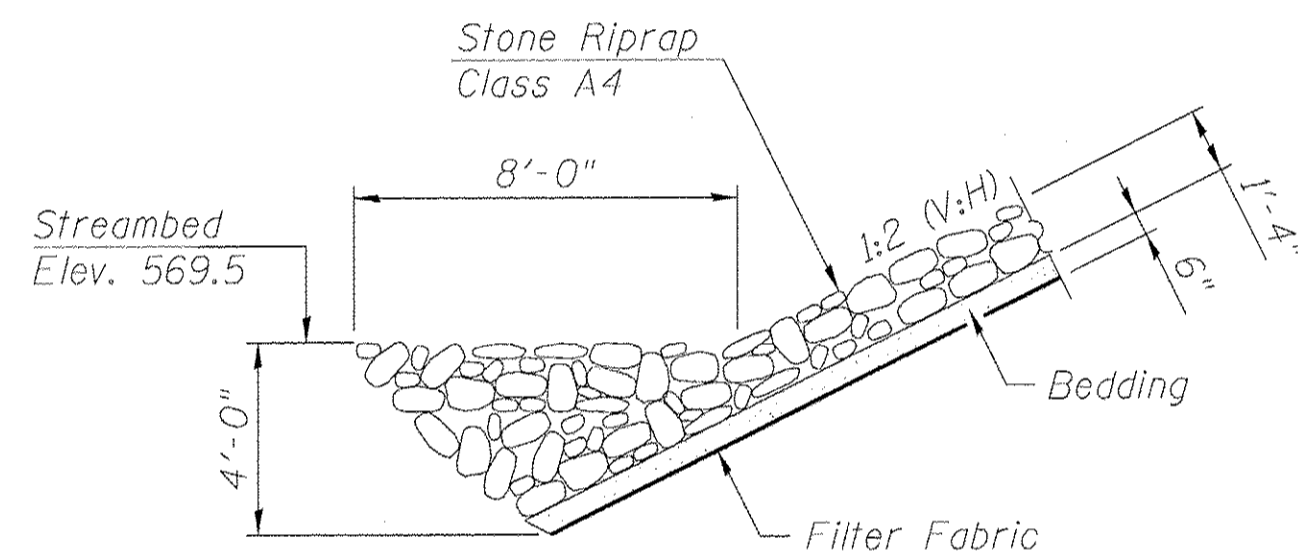
- Reinforcement bars designated (E) shall be epoxy coated.
- Plan dimensions and details relative to existing plans are subject to nominal construction variations. The Contractor shall field verify existing dimensions and details affecting new construction and make necessary approved adjustments prior to construction or ordering of materials. Such variations shall not be cause for additional compensation for a change in scope of the work, however, the Contractor will be paid for the quantity actually furnished at the unit price bid for the work.
- Layout of the slope protection system may be varied to suit ground conditions in the field as directed by the Engineer.
- Any reinforcement bars that are damaged during concrete removal operations shall be repaired or replaced using an approved bar splicer or anchorage system. Cost included with Concrete Removal.
- Slipforming of parapets is not allowed.
- The Contractor shall obtain a construction permit from the Illinois Department of Natural Resources (IDNR), Office of Water Resources for any temporary construction activity placed in the water except for cofferdams. This shall include the placement of material for run-arounds, causeways, etc. Any permit application by the Contractor shall refer to the IDNR 3704 Floodway Construction permit number allowing permanent construction as shown in the contract plans.

INDEX OF SHEETS

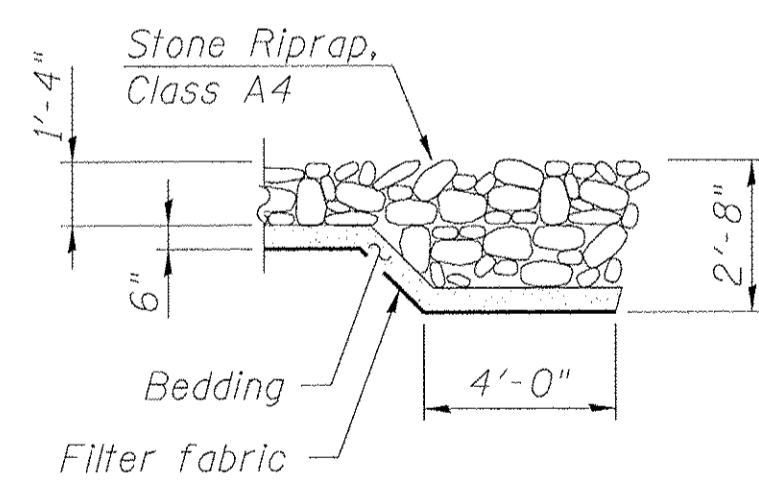
- S1 General Plan and Elevation
- S2 General Data
- S3 Footing Layout
- S4 Removal Plan
- S5 Stage Construction Details
- S6 Temporary Concrete Barrier for Stage Construction
- S7 Top of Deck Elevation Layout
- S8 Top of Deck Elevations 1 of 3
- S9 Top of Deck Elevations 2 of 3
- S10 Top of Deck Elevations 3 of 3
- S11 Top of Approach Slab Elevations
- S12 Superstructure 1 of 2
- S13 Superstructure 2 of 2
- S14 Superstructure Details 1 of 4
- S15 Superstructure Details 2 of 4
- S16 Superstructure Details 3 of 4
- S17 Superstructure Details 4 of 4
- S18 Bridge Approach Slab Details 1 of 3
- S19 Bridge Approach Slab Details 2 of 3
- S20 Bridge Approach Slab Details 3 of 3
- S21 Bicycle Railing and Parapet Railing Details 1 of 2
- S22 Bicycle Railing and Parapet Railing Details 2 of 2
- S23 Framing Plan
- S24 42" PPC I-Beam - Spans 1 and 3
- S25 42" PPC I-Beam - Span 2
- S26 42" PPC I-Beam Details
- S27 East Abutment Widening Details 1 of 2
- S28 East Abutment Widening Details 2 of 2
- S29 West Abutment Widening Details 1 of 2
- S30 West Abutment Widening Details 2 of 2
- S31 Pier 1 Widening Details
- S32 Pier 2 Widening Details
- S33 Pier 1 Concrete Repair Details
- S34 Pier 2 Concrete Repair Details
- S35 HP Pile Details
- S36 Bar Splicer Assembly and Mechanical Splicer Details
- S37 Boring Logs 1 of 3
- S38 Boring Logs 2 of 3
- S39 Boring Logs 3 of 3
- S40-S50 Abbreviated Existing Drawings (11 Drawings)

TOTAL BILL OF MATERIAL

ITEM	UNIT	TOTAL	STAGE I		STAGE II	
			SUPER	SUB	SUPER	SUB
Stone Riprap, Class A4	Sq Yd	132		104		28
Filter Fabric	Sq Yd	132		104		28
Concrete Removal	Cu Yd	38.0		17.5		20.5
Removal of Existing Concrete Deck	Each	1	0.4		0.6	
Protective Shield	Sq Yd	401	167		234	
Structure Excavation	Cu Yd	319		175		144
Cofferdam Excavation	Cu Yd	106		106		
Cofferdam (Type 1) (Location - 1)	Each	1		1		
Cofferdam (Type 1) (Location - 2)	Each	1		1		
Concrete Structures	Cu Yd	119.3		85.1		34.2
Concrete Superstructure	Cu Yd	546.3	256.4		289.9	
Bridge Deck Grooving	Sq Yd	768	324		444	
Concrete Encasement	Cu Yd	2.2		2.2		
Protective Coat	Sq Yd	1,473	676		797	
Furnishing and Erecting Precast Prestressed Concrete I-Beams, 42 In.	Foot	167.5	167.5			
Reinforcement Bars, Epoxy Coated	Pound	120,250	47,770	11,290	56,400	4,790
Bar Splicers	Each	773	689	84		
Bicycle Railing	Foot	408	204		204	
Parapet Railing	Foot	340	170		170	
Furnishing Steel Piles HP10x42	Foot	911		641		270
Driving Piles	Foot	911		641		270
Test Pile Steel HP10x42	Each	4		4		
Name Plates	Each	1			1	
Geocomposite Wall Drain	Sq Yd	139		68		71
Approach Slab Removal	Sq Yd	194	81		113	
Structural Repair of Concrete (Depth Equal to or Less Than 5 Inches)	Sq Ft	102		102		
Structural Repair of Concrete (Depth Greater Than 5 Inches)	Sq Ft	32		32		
Temporary Sheef Piling	Sq Ft	253		253		
Pipe Underdrains For Structures, 4"	Foot	163		77		86
Granular Backfill for Structures	Cu Yd	399		255		144
Chain Link Fence Removal	Foot	388	194		194	



SECTION A-A



SECTION B-B

BILL OF MATERIAL

ITEM	UNIT	STAGE I	STAGE II	TOTAL
Stone Riprap, Class A4	Sq. Yd.	104	28	132
Filter Fabric	Sq. Yd.	104	28	132

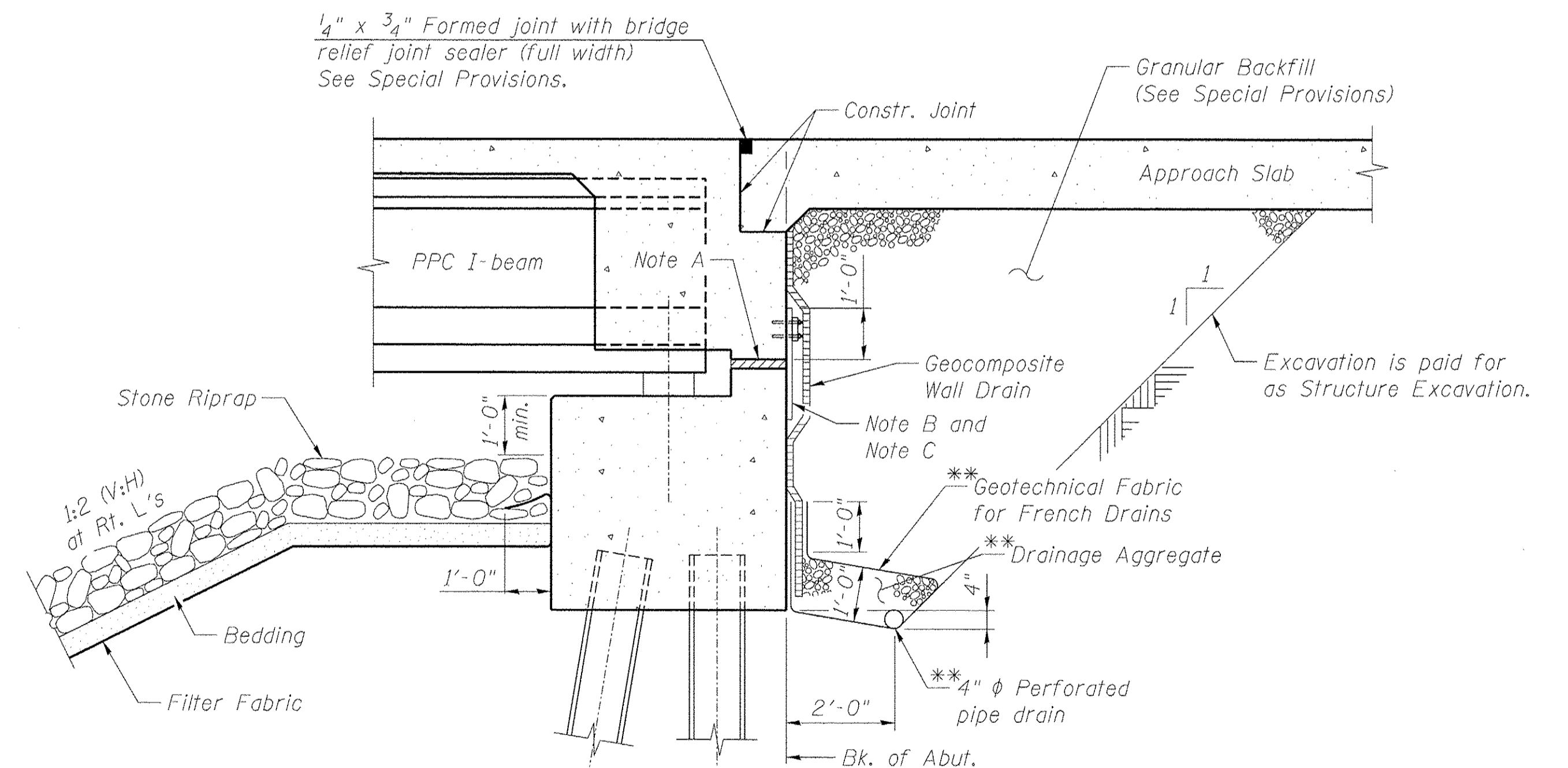
*Note A:
2" PJF (per Article 1051.09 of the Standard Specifications) full width and 1" PJF vertically at edges bonded to abutment cap with suitable adhesive as recommended by supplier.

*Note B:
Fabric Reinforced Elastomeric Mat according to Section 1028 of the Standard Specifications. Fabric Mat shall be 24" wide and attached full width and vertically at edges to the abutment cap with a 3/8" x 5" steel plate and 1/2" φ studs with nuts and washers at 12" cts.

*Note C:
Galvanize all plates, studs, washers and nuts after fabrication.

*Cost included with Concrete Superstructure.

**Included in the cost of Pipe Underdrains for Structures. (See Special Provisions)



SECTION THRU SEMI-INTEGRAL ABUTMENT
(Horiz. dim. at Rt. L's)

All drainage system components shall extend to 2'-0" from the end of each wingwall except an outlet pipe shall extend until intersecting with the side slopes. The pipes shall drain into concrete headwalls. (See Article 601.05 of the Standard Specifications and Highway Standard 60110).