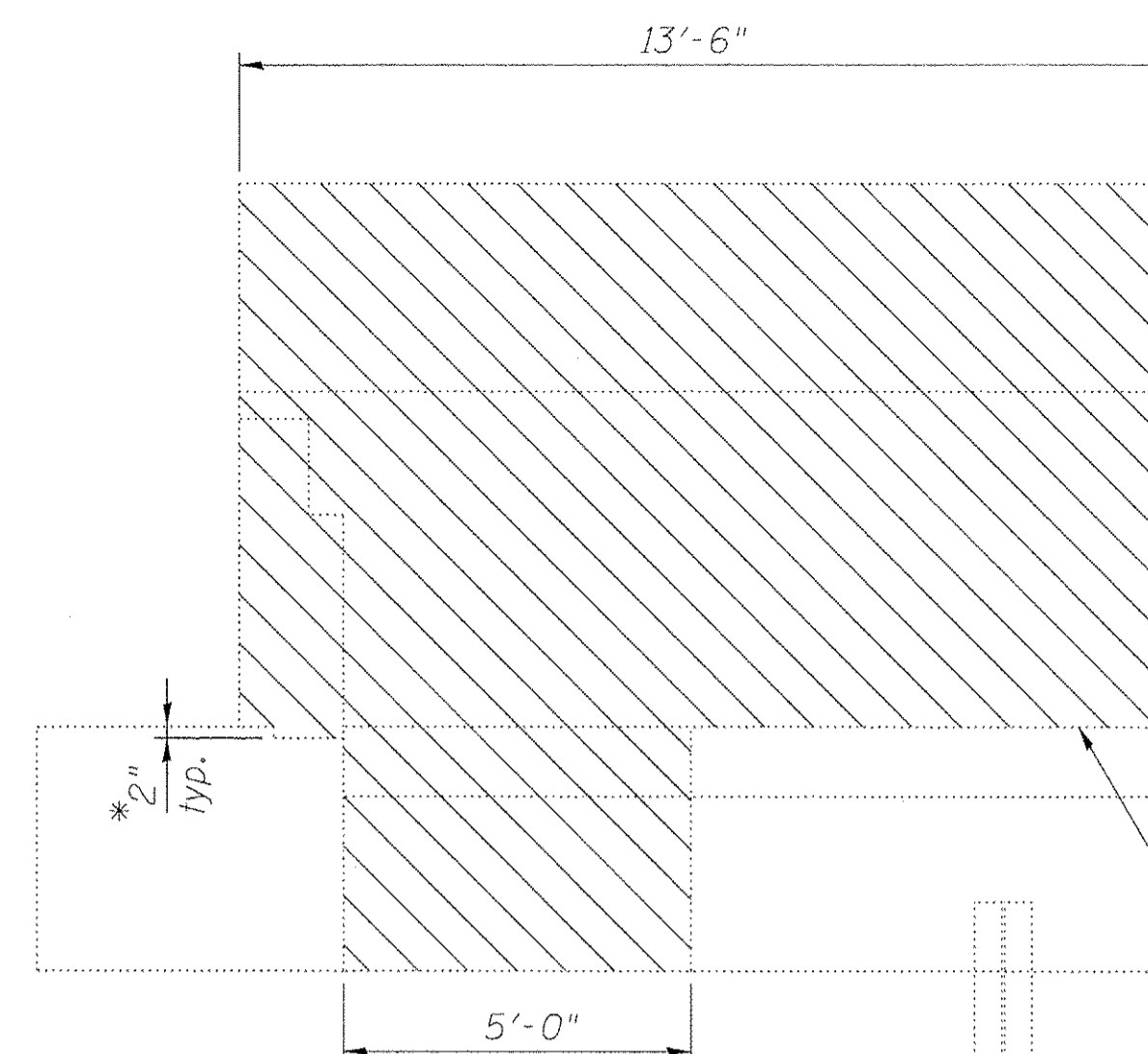
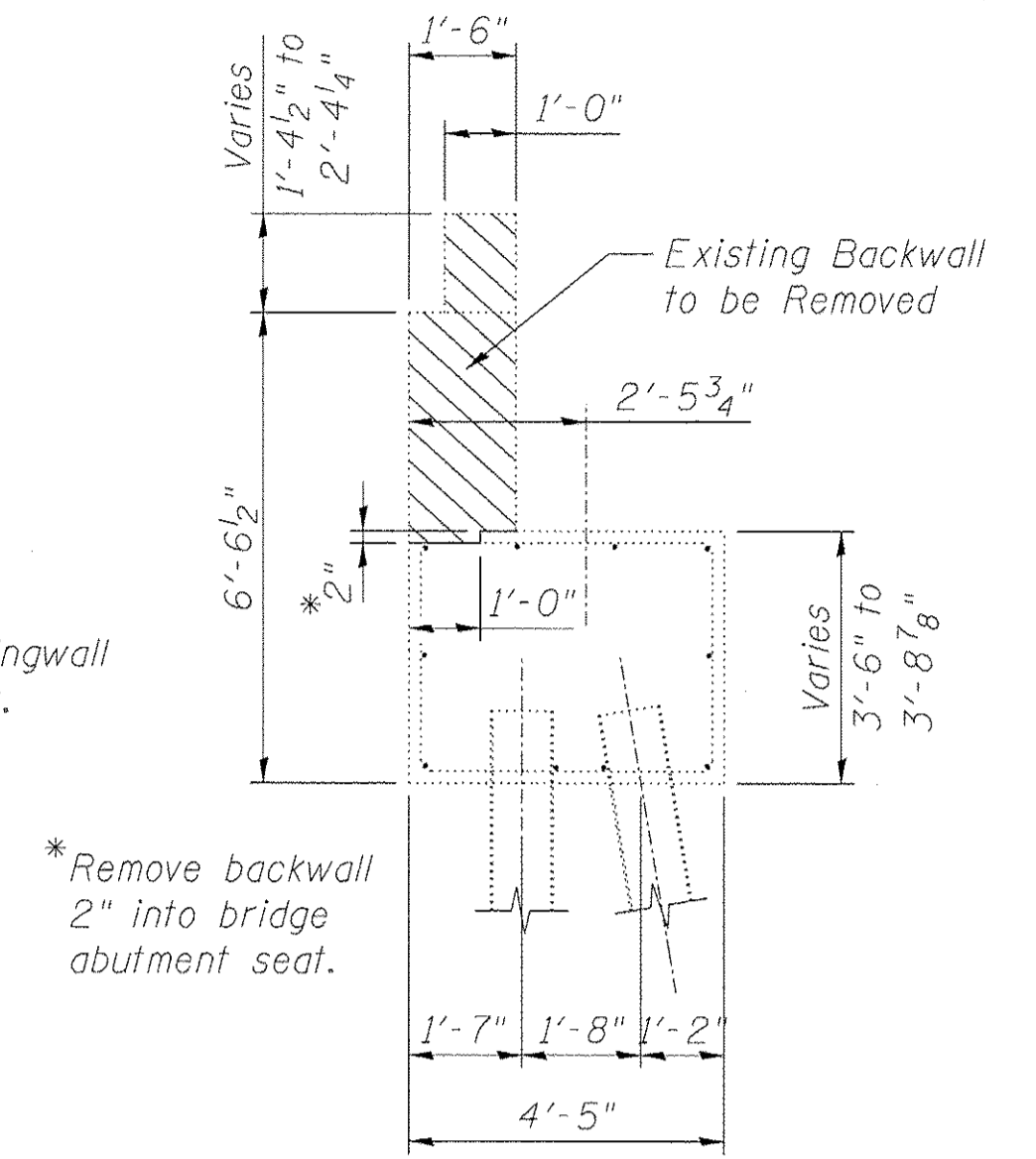


ELEVATION
 (East Abutment Looking East)
 (West Abutment Opposite Hand)

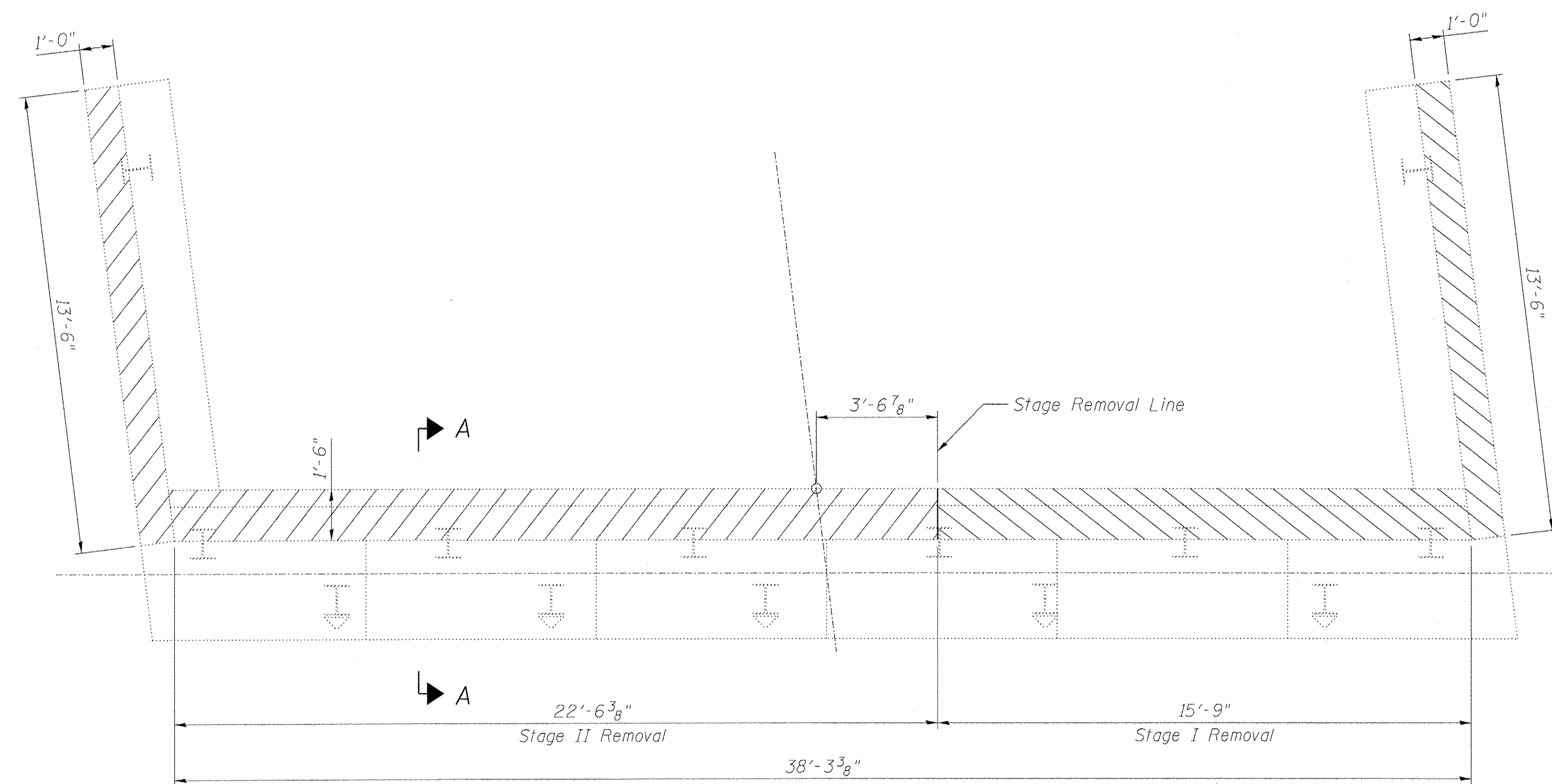


WINGWALL ELEVATION
 (East Wingwall Shown)
 (West Wingwall Similar)



SECTION A-A

* Remove backwall 2" into bridge abutment seat.



PLAN
 (East Abutment Shown)
 (West Abutment Opposite Hand)

BILL OF MATERIAL

ITEM	UNIT	STAGE I	STAGE II	TOTAL
Concrete Removal	Cu. Yd.	17.5	20.5	38.0

NOTES:

- Hatched areas indicate Concrete Removal.
- Existing reinforcement extending into new concrete at both the abutments and piers shall be cleaned, straightened, and incorporated into the new construction. Cost included with Concrete Removal.
- Any reinforcement bars that are damaged during concrete removal operations shall be repaired or replaced using an approved bar splicer or anchorage system. Cost included with Concrete Removal.
- All dimensions shown on Elevation are measured along length of abutment.

benesch
 engineers · scientists · planners
 Alfred Benesch & Company
 205 North Michigan Avenue, Suite 2400
 Chicago, Illinois 60601
 312-565-0450 Job No. 10055.02

FILE NAME =	USER NAME =	DESIGNED -	REVISED -
0166953.004_Remove1.dgn	eship	MFB	-
	PLOT SCALE =	CHECKED -	REVISED -
		EFS	-
	PLOT DATE =	DRAWN -	REVISED -
	2/19/2013	RMG	-
		CHECKED -	REVISED -
		EFS	-

STATE OF ILLINOIS
DEPARTMENT OF TRANSPORTATION

REMOVAL PLAN
STRUCTURE NO. 016-6953 BRIDGE ST. OVER THE NORTH SHORE CHANNEL
 SHEET NO. S4 OF S50 SHEETS

F.A.I. RTE.	SECTION	COUNTY	TOTAL SHEETS	SHEET NO.
	08-00251-00-BR	COOK	118	57
CONTRACT NO. 63817			ILLINOIS FED. AID PROJECT	