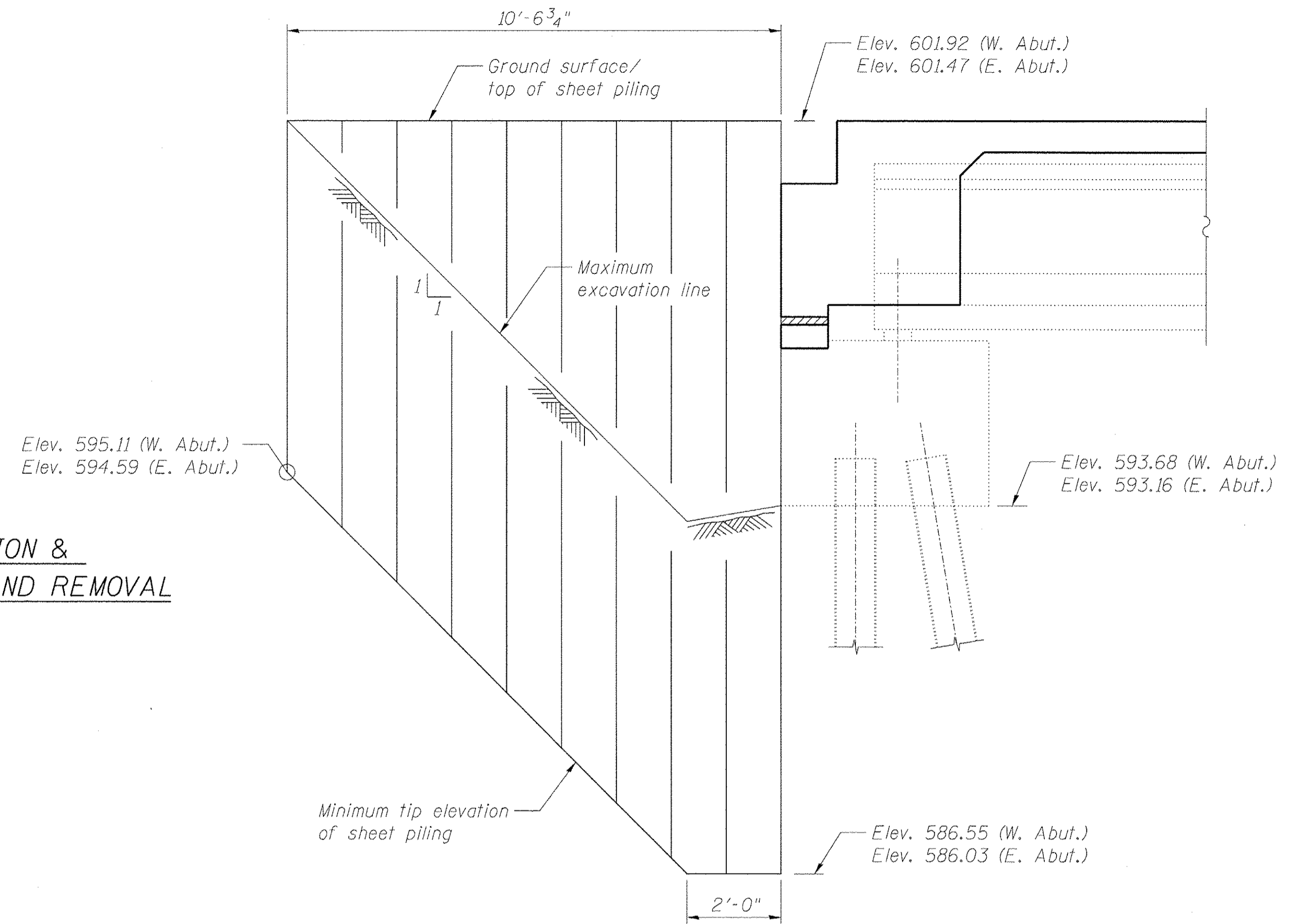


STAGE 1 REMOVAL

STAGE 1 CONSTRUCTION & STAGE 2 TRAFFIC AND REMOVAL

STAGE 2 CONSTRUCTION

FINAL CONDITION



TEMPORARY SHEET PILING
 (West and East Abutments)
 Minimum Section Modulus = 4.5 in³/ft
 Minimum Embedment = 6'-10"

BILL OF MATERIAL

ITEM	UNIT	STAGE I	STAGE II	TOTAL
Removal of Existing Concrete Deck	Each	0.4	0.6	1
Approach Slab Removal	Sq. Yd.	81	113	194
Temporary Sheet Piling	Sq. Ft.	253	0	253

NOTES:

- All staging deck cross sections are shown looking upstasion.
- Hatched area indicates Removal of Existing Concrete Deck.
- Details of Temporary Concrete Barrier are shown on sheet S6. For quantity of Temporary Concrete Barrier see Roadway Plans.
- If the Contractor chooses to alter the temporary cantilevered sheet piling design requirements shown on the plans, a design submittal including plan details and calculations will be required for review and acceptance by the Engineer.
- The Contractor shall use extreme caution during concrete deck removal so as not to damage the existing PPC I-beams. Contractor shall repair any damage to PPC I-beams at no additional cost to the City of Evanston. See Special Provision for "Removal of Existing Concrete Deck".

benesch
 engineers · scientists · planners
 Alfred Benesch & Company
 205 North Michigan Avenue, Suite 2400
 Chicago, Illinois 60601
 312-565-0450 Job No. 10055.02

FILE NAME = 0166953.005_Staging.dgn	USER NAME = eship	DESIGNED - EFS/MFB	REVISED -
		CHECKED - MFB/EFS	REVISED -
		DRAWN - RMC/MFB	REVISED -
		CHECKED - EFS	REVISED -
	PLOT DATE = 2/19/2013		

**STATE OF ILLINOIS
 DEPARTMENT OF TRANSPORTATION**

**STAGE CONSTRUCTION DETAILS
 STRUCTURE NO. 016-6953 BRIDGE ST. OVER THE NORTH SHORE CHANNEL**

SHEET NO. S5 OF 550 SHEETS

F.A.I. RTE.	SECTION	COUNTY	TOTAL SHEETS	SHEET NO.
	08-00251-00-BR	COOK	118	58
CONTRACT NO. 63817			ILLINOIS FED. AID PROJECT	

X:\100005\10055.02\Eng_Docs\Phase_II\Bridg-Stre-et_016-6953\Final\0166953_005_Staging.dgn 2/19/2013 2:50:22 PM