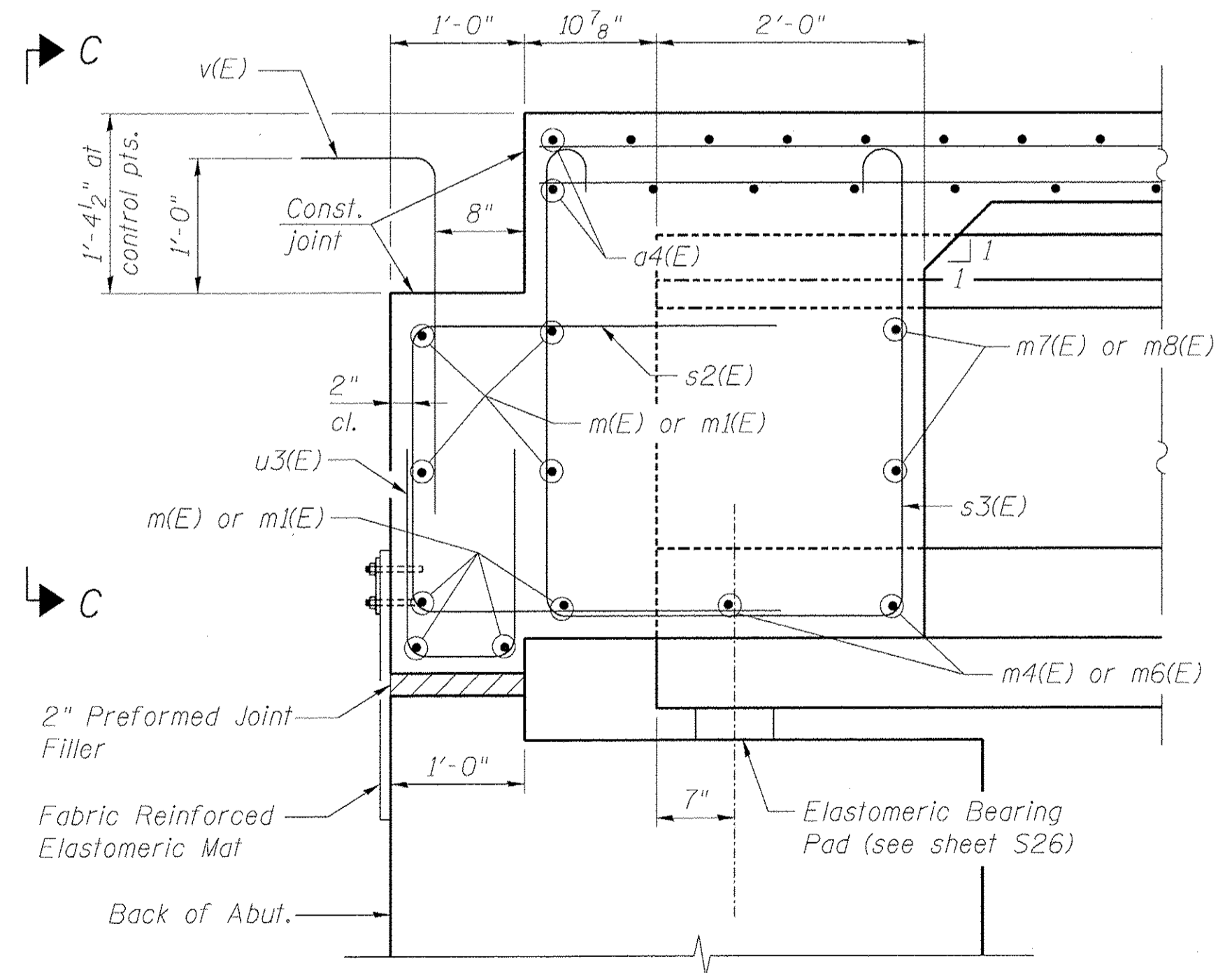
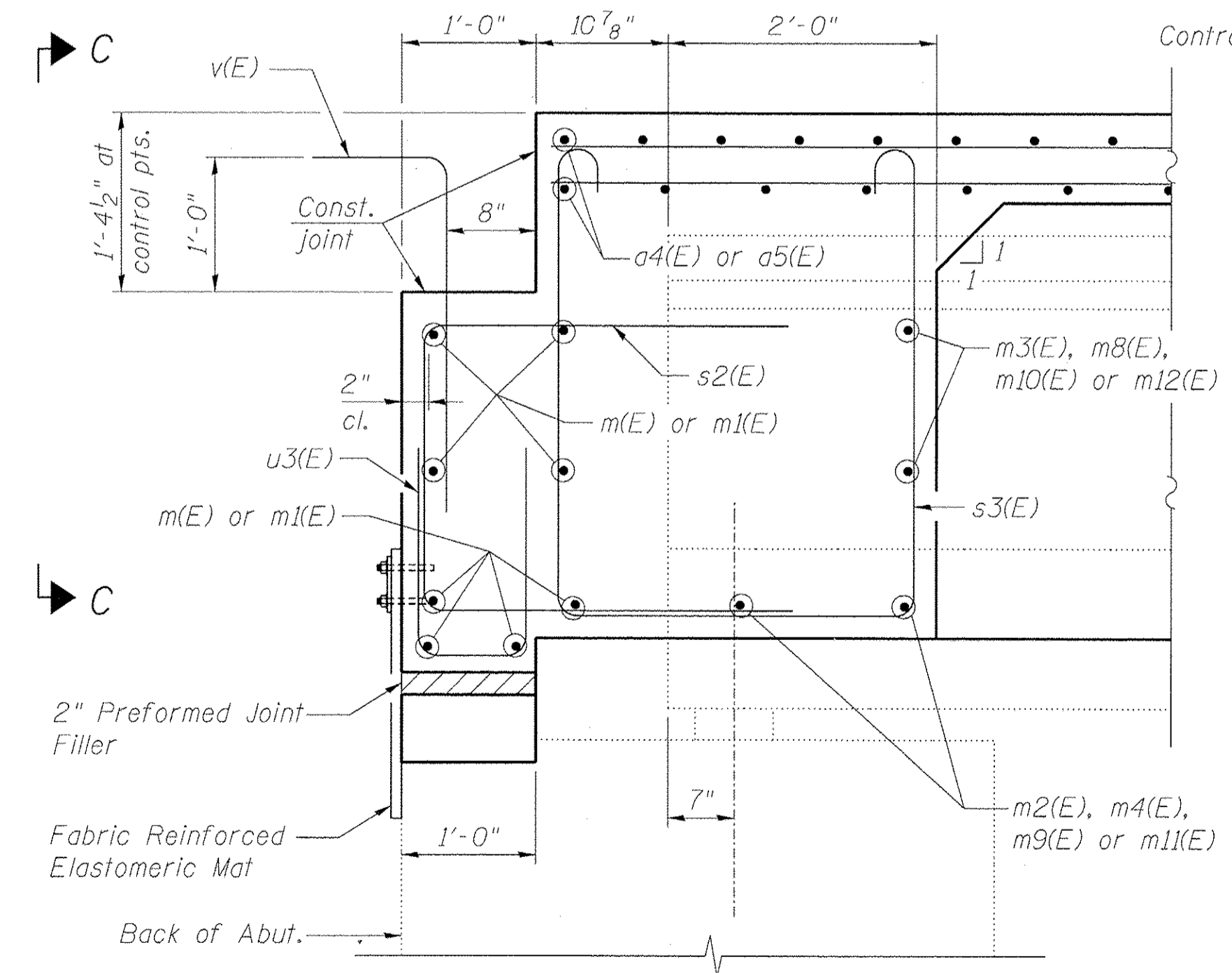


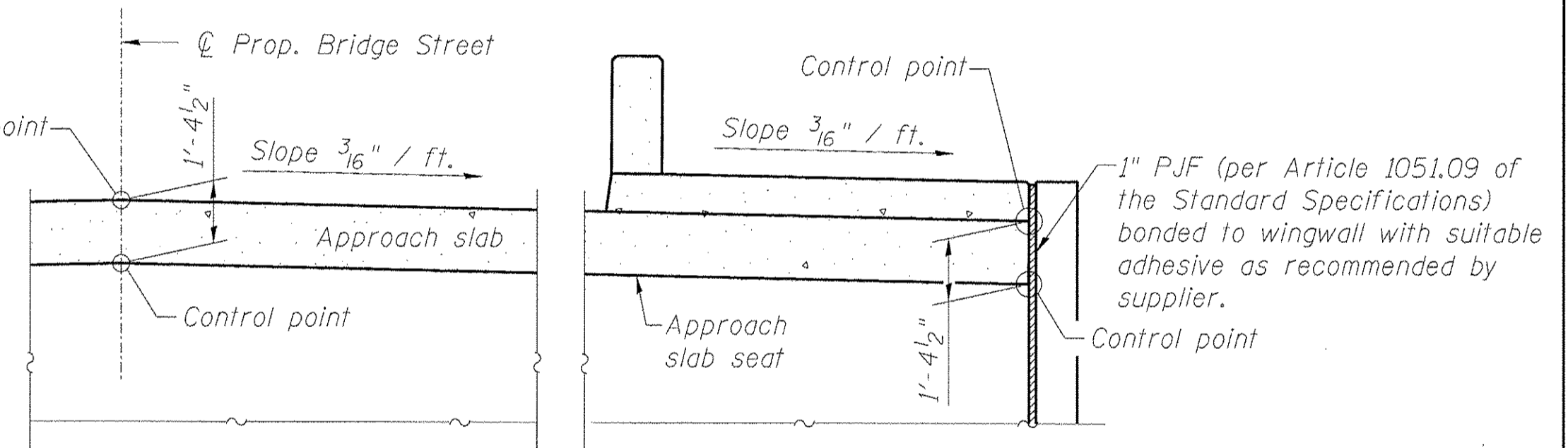
DIAPHRAGM ELEVATION AT ABUTMENT
 (East Abutment shown looking Downstation)
 (West Abutment - Opposite Hand)



SECTION A-A
 (at abutment widening, dim. at Rt. L's except as noted)



SECTION B-B
 (at existing abutment, dim. at Rt. L's except as noted)



VIEW C-C

- NOTES:**
1. Reinforcement bars in diaphragm are billed with Superstructure on sheet S17.
 2. Concrete in diaphragm is included with Concrete Superstructure on sheet S17.
 3. For bar bend details, see sheet S17.
 4. The s2(E), s3(E) and u3(E) bars shall be placed parallel to the beams. Spacing for these bars shall be at right angles to the beams.
 5. The approach slab seat shall have a constant slope determined by the control points shown.
 6. For bearing details see sheet S26.
 7. For bar splicer details, see sheet S36.

benesch
 engineers • scientists • planners
 Alfred Benesch & Company
 205 North Michigan Avenue, Suite 2400
 Chicago, Illinois 60601
 312-565-0450 Job No. 10055.02

FILE NAME = 0166953.015_Abut_Diaphragm.dgn
 USER NAME = oahp
 PLOT SCALE =
 PLOT DATE = 2/19/2013

DESIGNED - MJF/MFB
 CHECKED - EFS
 DRAWN - RMC
 CHECKED - EFS

REVISED -
 REVISED -
 REVISED -
 REVISED -

**STATE OF ILLINOIS
 DEPARTMENT OF TRANSPORTATION**

**SUPERSTRUCTURE DETAILS 2 OF 4
 STRUCTURE NO. 016-6953 BRIDGE ST. OVER THE NORTH SHORE CHANNEL**
 SHEET NO. S15 OF S50 SHEETS

F.A.I. RTE.	SECTION	COUNTY	TOTAL SHEETS	SHEET NO.
	08-00251-00-BR	COOK	118	68
CONTRACT NO. 63817			ILLINOIS FED. AID PROJECT	

X:\100005\10055.02\Eng_Docs_Phase_1\16-6953\Final\0166953.015_Abut_Diaphragm.dgn 2/19/2013 PM 2:50:42