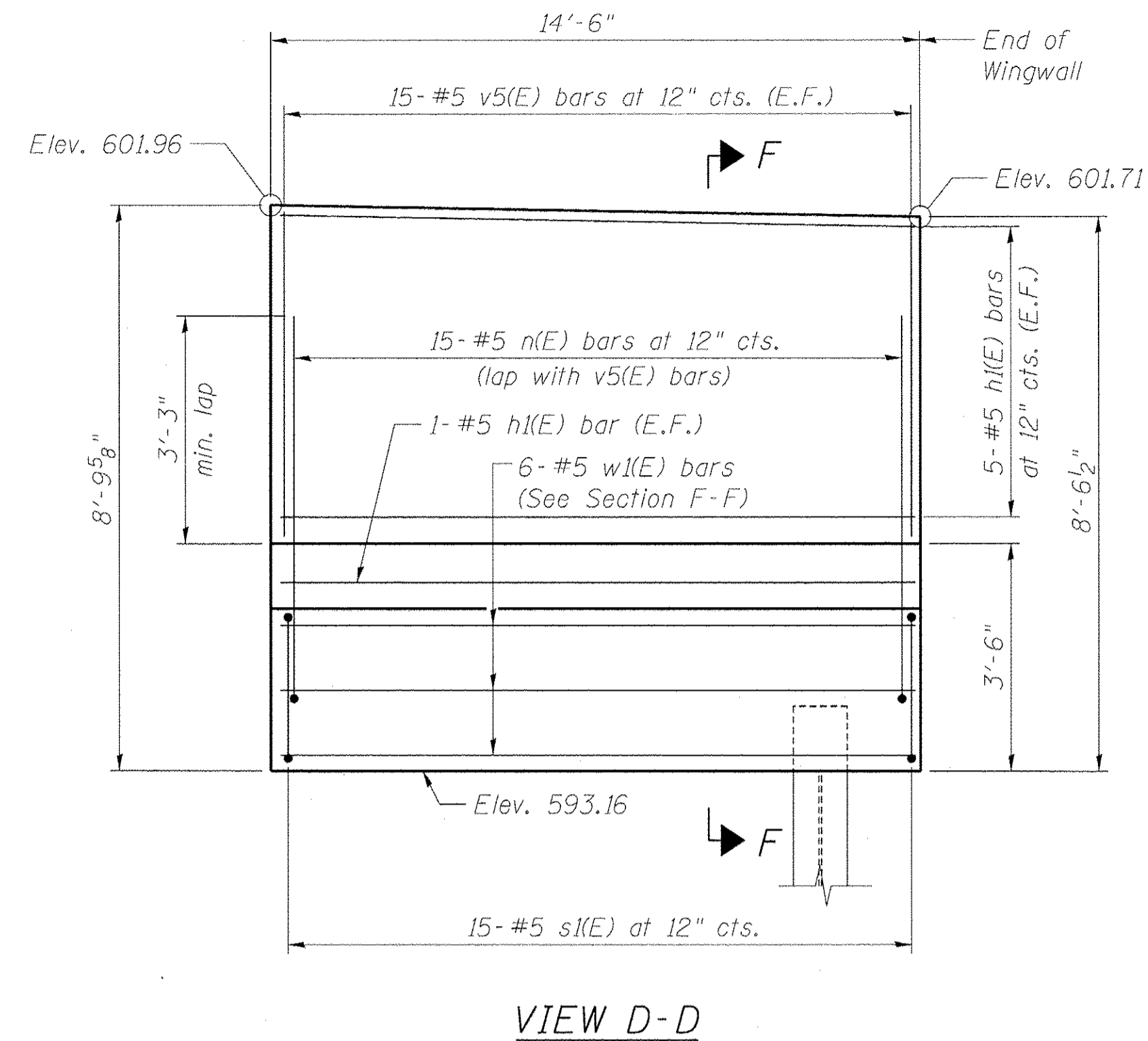
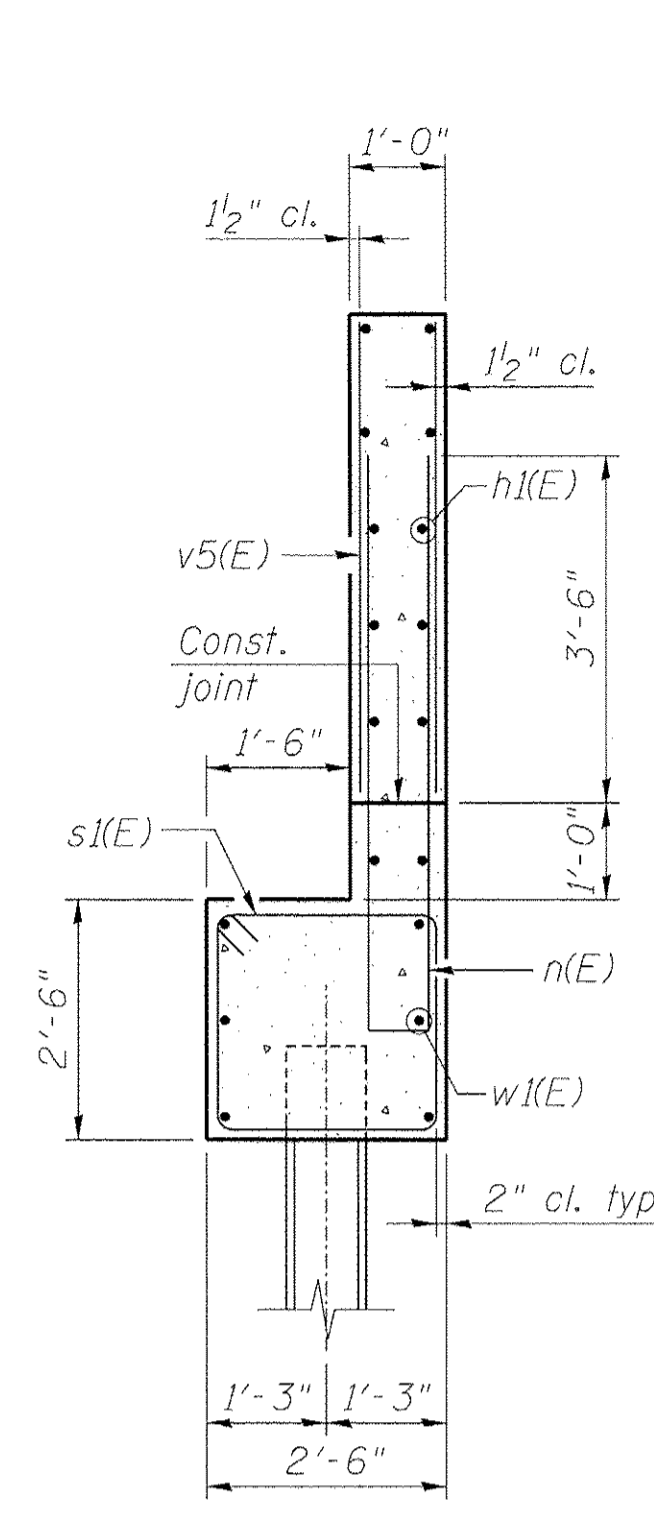


SECTION E-E

VIEW C-C



VIEW D-D



SECTION F-F

**EAST ABUTMENT
BILL OF MATERIAL
(Stage I)**

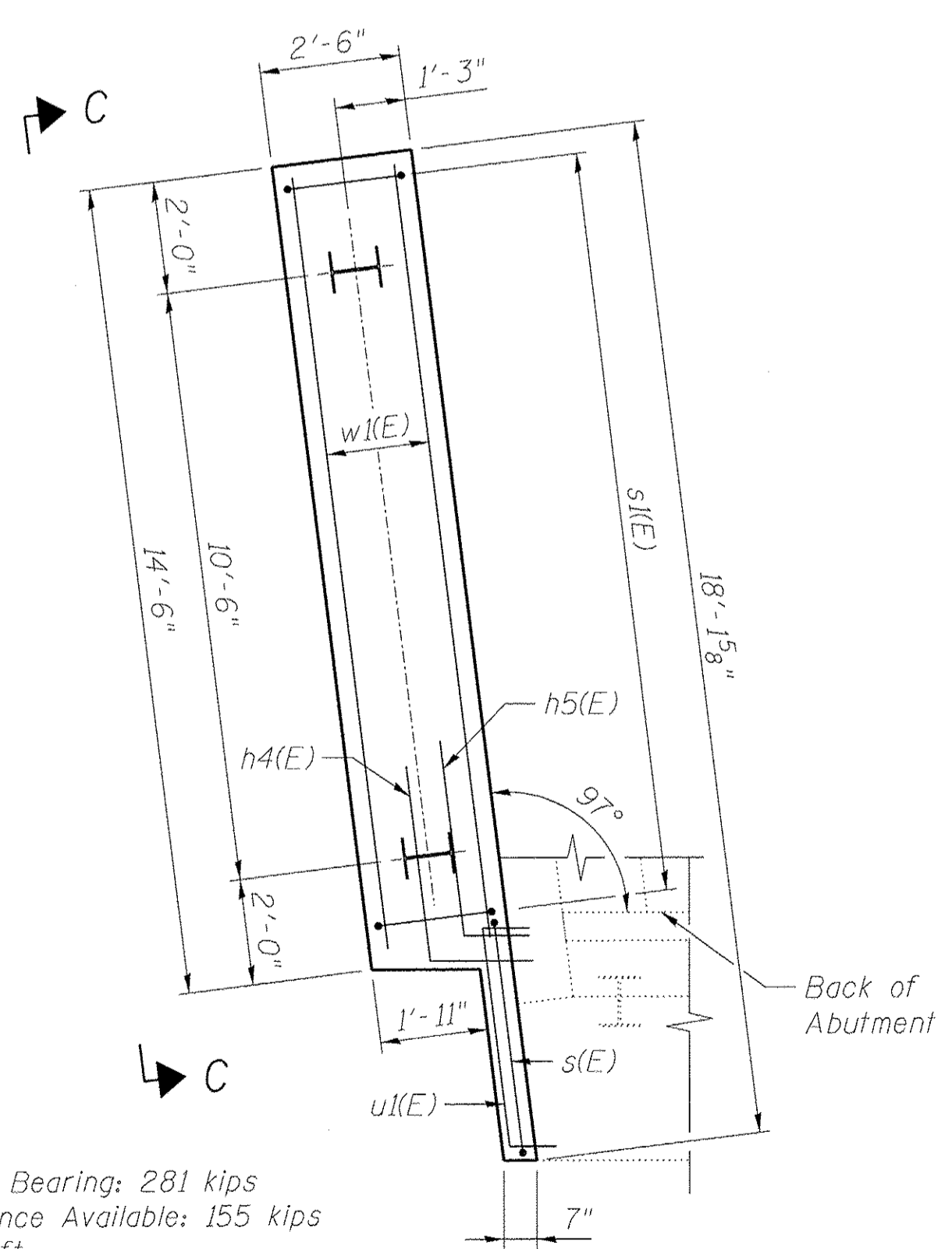
Bar	No.	Size	Length	Shape
h(E)	2	#5	22'-2"	—
h1(E)	12	#5	14'-2"	—
h2(E)	6	#5	7'-0"	┘
n(E)	15	#5	12'-4"	—
p(E)	8	#7	9'-0"	—
s(E)	8	#5	15'-5"	□
s1(E)	15	#5	9'-7"	□
u(E)	4	#6	11'-8"	┘
u2(E)	24	#4	2'-0"	┘
v5(E)	30	#5	4'-9"	—
w1(E)	6	#5	14'-2"	—
Structure Excavation		Cu. Yd.	88	
Concrete Structures		Cu. Yd.	13.2	
Reinforcement Bars, Epoxy Coated		Pound	1,230	
Furnishing Steel Piles HP10x42		Foot	210	
Driving Steel Piles		Foot	210	
Test Pile Steel HP10x42		Each	1	
Concrete Encasement		Cu. Yd.	1.1	
Granular Backfill for Structures		Cu. Yd.	88	

**EAST ABUTMENT
BILL OF MATERIAL
(Stage II)**

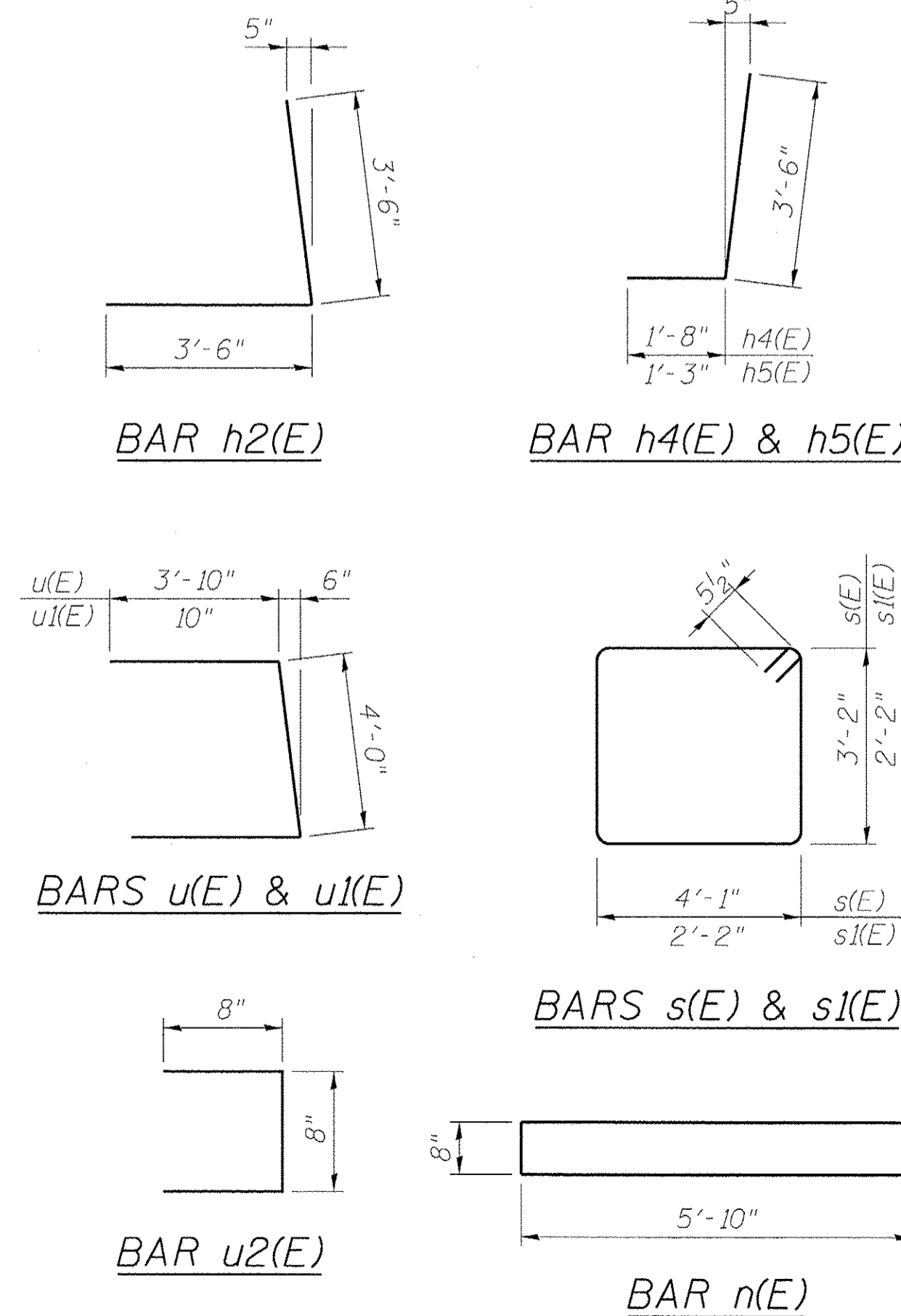
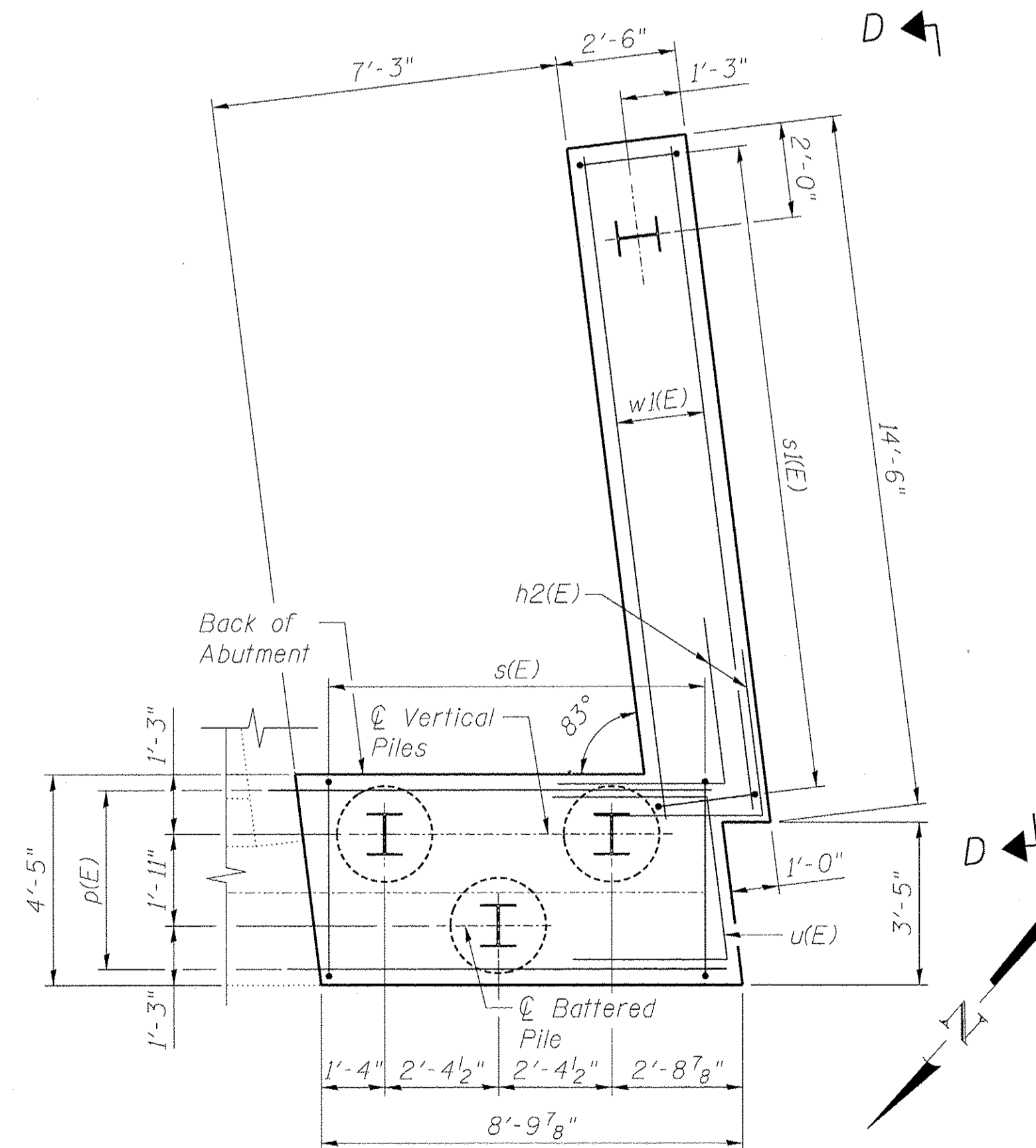
Bar	No.	Size	Length	Shape
h1(E)	12	#5	14'-2"	—
h3(E)	2	#5	26'-10"	—
h4(E)	3	#5	5'-2"	┘
h5(E)	3	#5	4'-9"	┘
n(E)	15	#5	12'-4"	—
s(E)	1	#5	15'-5"	□
s1(E)	15	#5	9'-7"	□
u1(E)	4	#6	5'-8"	┘
u2(E)	28	#4	2'-0"	┘
v5(E)	30	#5	4'-9"	—
w1(E)	6	#5	14'-2"	—
Structure Excavation		Cu. Yd.	72	
Concrete Structures		Cu. Yd.	8.7	
Reinforcement Bars, Epoxy Coated		Pound	940	
Furnishing Steel Piles HP10x42		Foot	140	
Driving Steel Piles		Foot	140	
Granular Backfill for Structures		Cu. Yd.	72	

PILE DATA

Type: HP10x42
 Nominal Required Bearing: 281 kips
 Factored Resistance Available: 155 kips
 Est. Length: 70 ft.
 No. Production Piles: 5
 No. Test Piles: 1



SECTION THRU PILE CAP



NOTE:

Backfill shall be placed behind the abutment after the superstructure has been poured and falsework removed. See Article 502.10 of the Standard Specifications.

benesch
 engineers - scientists - planners
 Alfred Benesch & Company
 205 North Michigan Avenue, Suite 2400
 Chicago, Illinois 60601
 312-565-0450 Job No. 10055.02

FILE NAME = 0166953_028_AbutDet2.dgn	USER NAME = ashsp	DESIGNED - MJF/MFB	REVISED -
		CHECKED - EFS	REVISED -
		DRAWN - RMG	REVISED -
		CHECKED - EFS	REVISED -

**STATE OF ILLINOIS
DEPARTMENT OF TRANSPORTATION**

**EAST ABUTMENT WIDENING DETAILS 2 OF 2
STRUCTURE NO. 016-6953 BRIDGE ST. OVER THE NORTH SHORE CHANNEL**

SHEET NO. S28 OF 550 SHEETS

F.A.I. RTE.	SECTION 08-00251-00-BR	COUNTY COOK	TOTAL SHEETS 118	SHEET NO. 81
				CONTRACT NO. 63817
ILLINOIS FED. AID PROJECT				

X:\10000S\10055.02\Eng_Docs_Phase_11\Bridg-Stree_016-6953\Final\0166953-028_AbutDet2.dgn 2:51:06 PM 2/19/2013