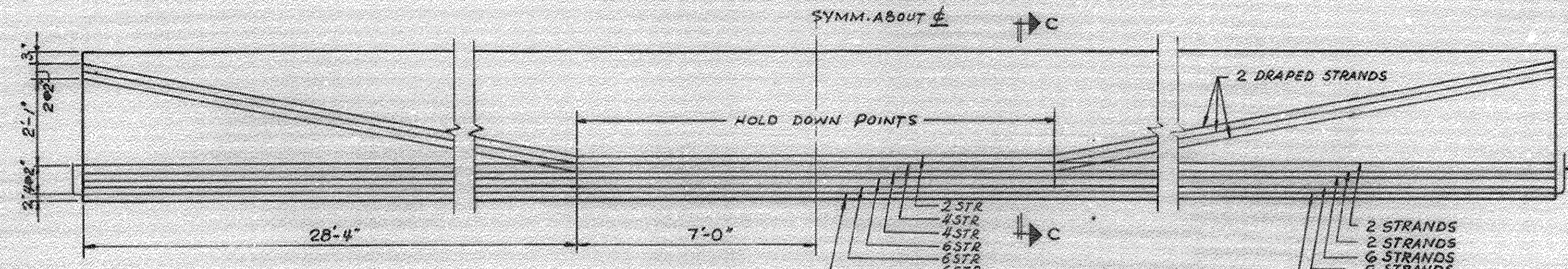
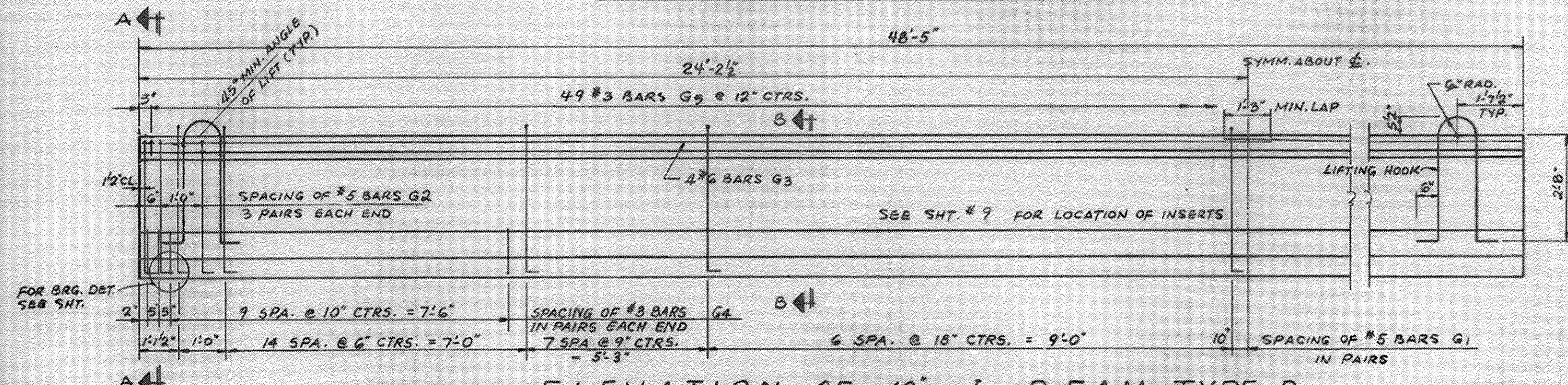


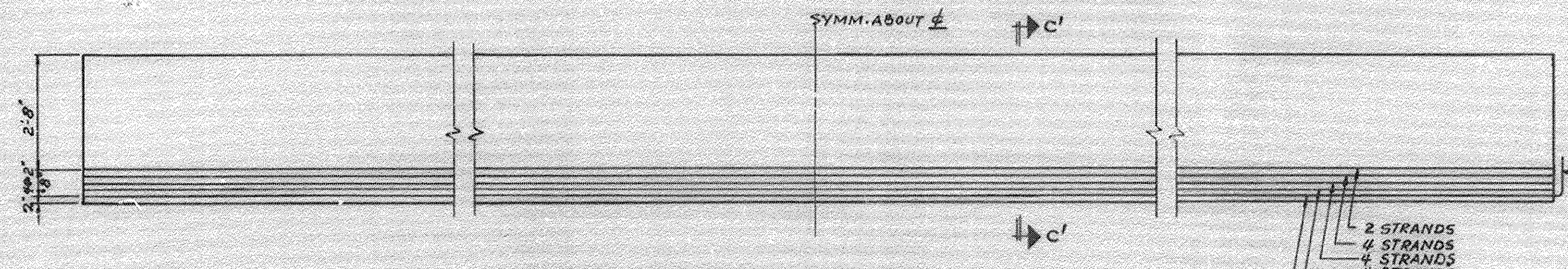
ELEVATION OF 42" I-BEAM-TYPE A
SHOWING REINFORCEMENT & DIMENSIONS



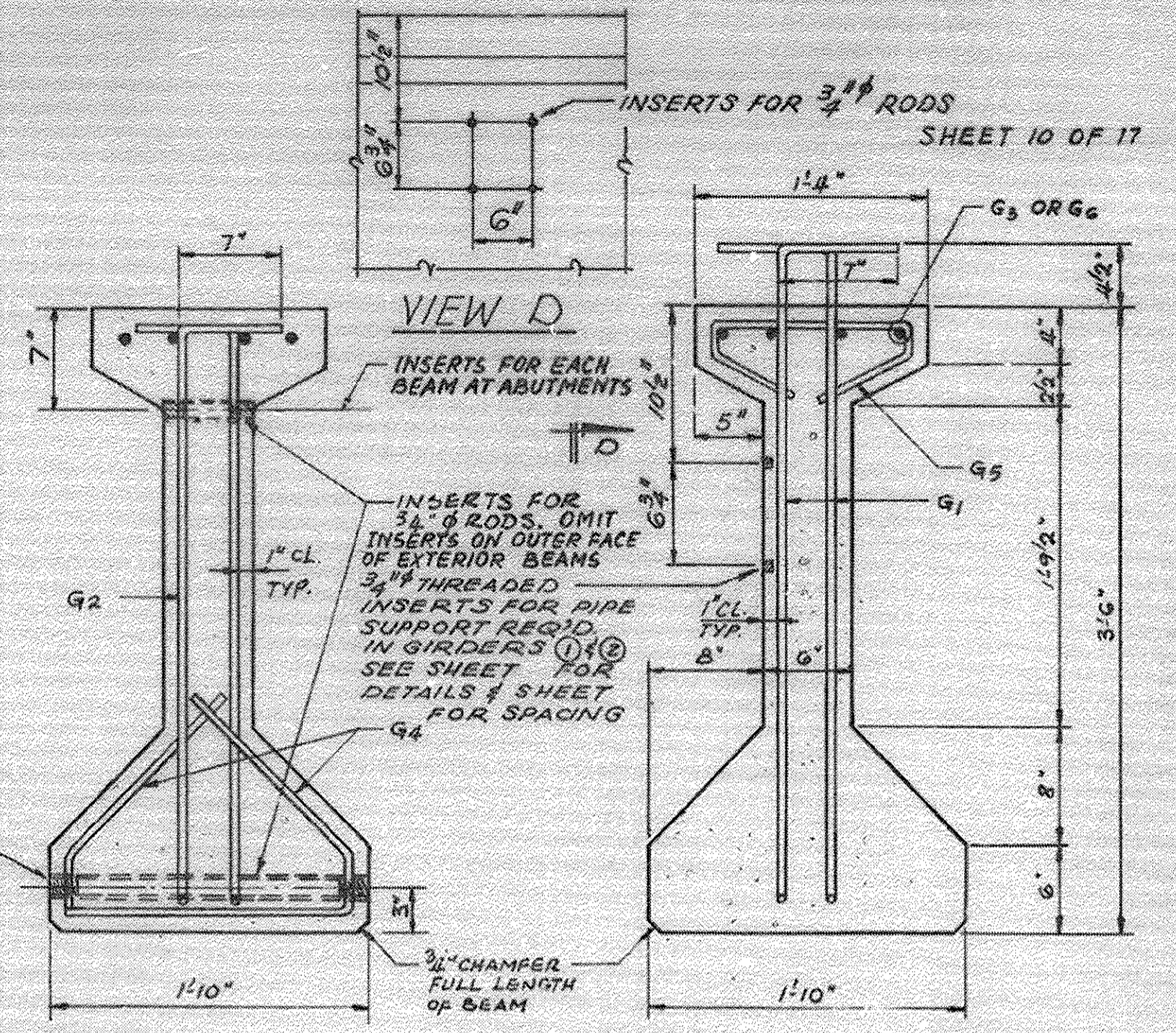
ELEVATION OF 42" I-BEAM-TYPE A
SHOWING PRESTRESSING STEEL



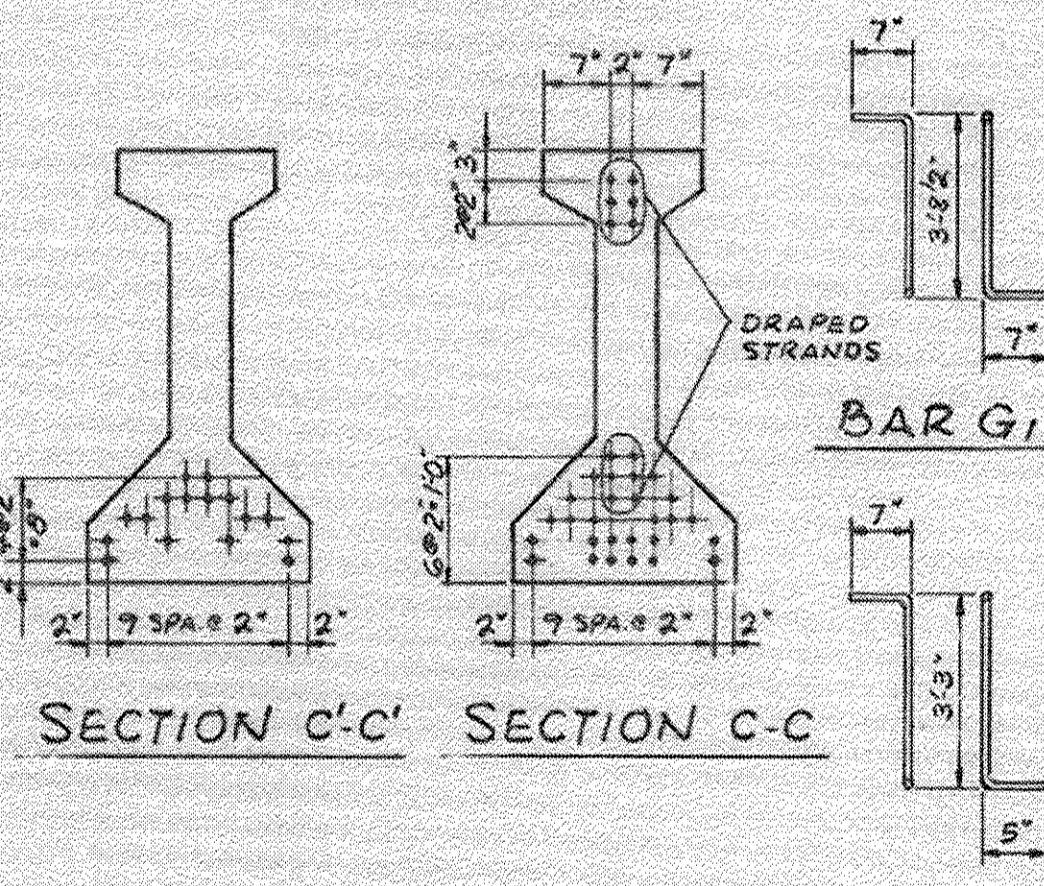
ELEVATION OF 42" I-BEAM-TYPE B
SHOWING REINFORCEMENT & DIMENSIONS



ELEVATION OF 42" I-BEAM-TYPE B
SHOWING PRESTRESSING STEEL



SECTION 'A-A' SECTION 'B-B'



SECTION C-C' SECTION C-C'

BAR LIST (FOR ONE BEAM ONLY)

BAR	NUMBER	SIZE	LENGTH	SHAPE
G1	148	#5	4'-10 1/2"	7L
G2	12	#5	4'-9"	7L
G3	8	#6	25'-0"	—
G4	48	#3	3'-3 1/2"	L
G5	71	#3	2'-7"	U
G6	4	#6	36'-0"	—

NOTES

ALL INSERTS AND THREADED RODS FOR INSERTS, REINFORCING AND PRESTRESSING STEEL, AND OTHER ITEMS WHICH ARE CAST INTO THE PRECAST CONCRETE I-BEAMS SHALL BE INCLUDED IN THE CONTRACT UNIT PRICE PER LINEAL FOOT OF "FURNISHING AND ERECTING PRECAST PRESTRESSED CONCRETE I-BEAMS, 42 IN."
 PRESTRESSING STEEL SHALL HAVE A NOMINAL DIAMETER OF 1/2" INSERTS FOR 3/4" DIAMETER THREADED RODS ARE TO BE TWO STRUT, COIL TYPE FOR INTERIOR I-BEAMS AND SINGLE COIL, FLARED LOOP TYPE FOR EXTERIOR I-BEAMS.
 STEEL FOR LIFTING HOOKS SHALL BE NON-DEFORMED BARS Fy = 40,000 PSI.

BILL OF MATERIAL

ITEM	UNIT	TOTAL
FURNISHING & ERECTING PRECAST PRESTRESSED CONCRETE I-BEAMS, 42"	LIN. FT.	1,005

PRESTRESSED I-BEAM (42") DETAILS

BROWN AVE.
 OVER NORTH SHORE CHANNEL
 OF METROPOLITAN SANITARY DISTRICT
 OF GREATER CHICAGO
 EVANSTON, ILLINOIS
 STATION 100+00.00

ALFRED BENESCH & COMPANY
 CONSULTING ENGINEERS
 235 N. MICHIGAN AVE., CHICAGO, ILLINOIS

benesch
 engineers · scientists · planners
 Alfred Benesch & Company
 205 North Michigan Avenue, Suite 2400
 Chicago, Illinois 60601
 312-565-0450 Job No. 10055.02

FILE NAME	USER NAME	DESIGNED	REVISIONS
0166953.045_Exist6.dgn	ashup	MJF	-
		EFS	-
		RMG	-
		EFS	-

STATE OF ILLINOIS
 DEPARTMENT OF TRANSPORTATION

EXISTING DRAWING 6
 STRUCTURE NO. 016-6953 BRIDGE ST. OVER THE NORTH SHORE CHANNEL
 SHEET NO. S45 OF S50 SHEETS

F.A.I. RTE.	SECTION	COUNTY	TOTAL SHEETS	SHEET NO.
	08-00251-00-BR	COOK	118	98
				CONTRACT NO. 63817
ILLINOIS FED. AID PROJECT				

FOR INFORMATION ONLY

X:\100005\10055.02\Eng_Docs\Phase_II\Bridg...Street\016-6953\Final\0166953.045_Exist6.dgn 2:54:24 PM 2/19/2013