

**ROUTE MARKERS**

FOR U.S. ROUTES  
MI-40-2424

FOR ILLINOIS ROUTES  
MI-50-2424

R.R. UNMARKED ROUTES  
SPECIAL 24" x 18" VARIABLE  
4" BLACK LETTERS ON WHITE  
REFLECTIVE BACKGROUND

**ARROWS SIGNS**

M5-1L-2115

M5-1R-2115

M6-1-2115

M6-1-2115

M6-3-2115

**CARDINAL DIRECTION & DETOUR SIGNS**

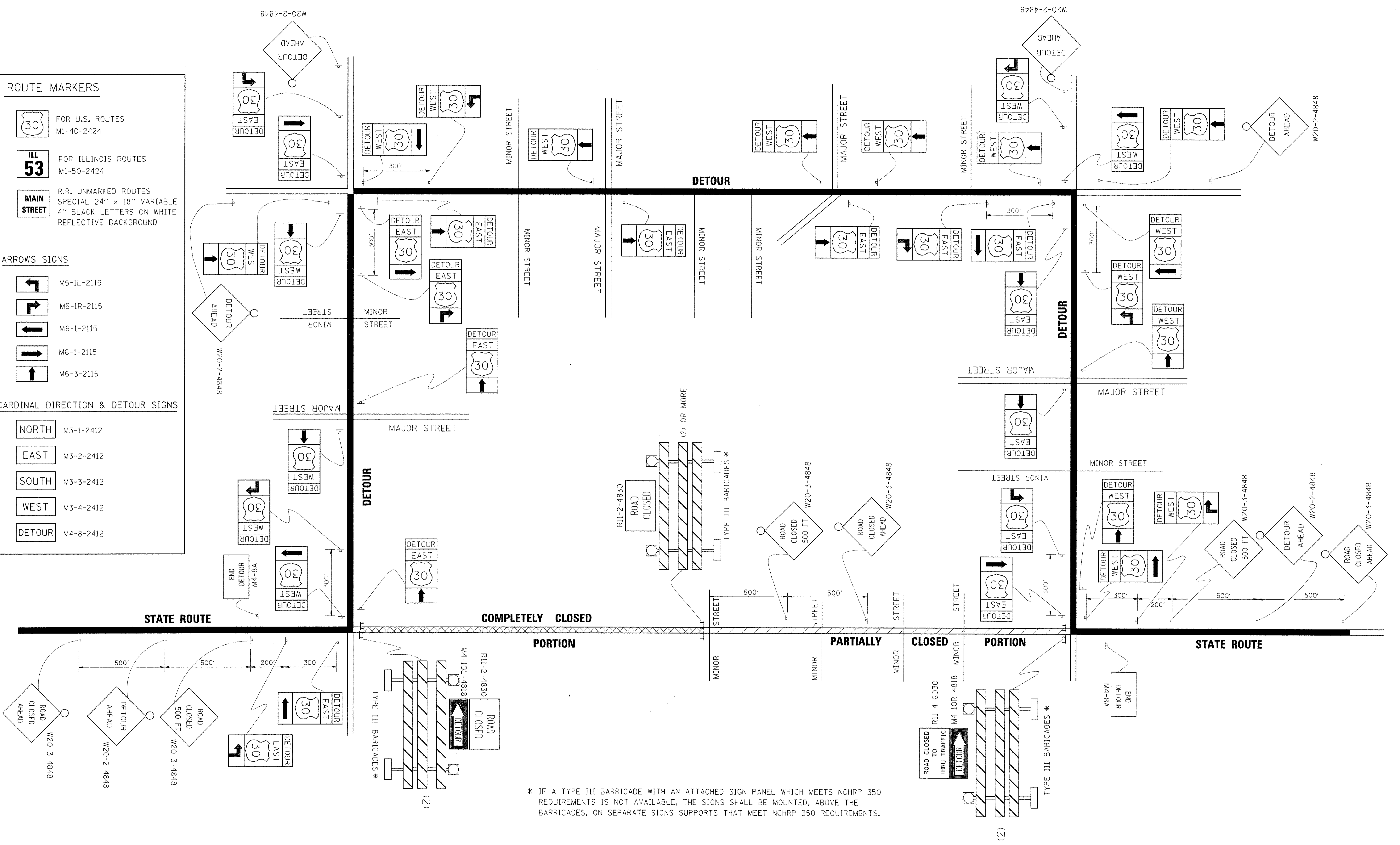
NORTH M3-1-2412

EAST M3-2-2412

SOUTH M3-3-2412

WEST M3-4-2412

DETOUR M4-8-2412



\* IF A TYPE III BARRICADE WITH AN ATTACHED SIGN PANEL WHICH MEETS NCHRP 350 REQUIREMENTS IS NOT AVAILABLE, THE SIGNS SHALL BE MOUNTED, ABOVE THE BARRICADES, ON SEPARATE SIGNS SUPPORTS THAT MEET NCHRP 350 REQUIREMENTS.

|   |                        |                             |                            |
|---|------------------------|-----------------------------|----------------------------|
| FILE NAME =                                     | USER NAME = drivakosgn | DESIGNED -                  | REVISED - 10-18-02         |
| ca:\pwwork\p\WID07\DRIVAKOSGN\10180315\1021.dgn |                        | DRAWN -                     | REVISED - R. BORO 09-14-09 |
|   |                        | PLOT SCALE = 49.9999' / IN. | REVISION -                 |
|   |                        | PLOT DATE = 9/14/2009       | REVISION -                 |

**STATE OF ILLINOIS  
DEPARTMENT OF TRANSPORTATION**

| DETOUR SIGNING<br>FOR CLOSING STATE HIGHWAYS |                         |      |         |
|--|-------------------------|------|---------|
| SCALE: NONE                                  | SHEET NO. 1 OF 1 SHEETS | STA. | TO STA. |

| F.A. RTE.                                       | SECTION        | COUNTY | TOTAL SHEETS       | SHEET NO. |
|---|----------------|--------|--------------------|-----------|
|   | 08-00251-00-BR | COOK   | 118                | 114       |
| TC-21   |                |        | CONTRACT NO. 63817 |           |
| FED. ROAD DIST. NO. 1 ILLINOIS FED. AID PROJECT |                |        |                    |           |