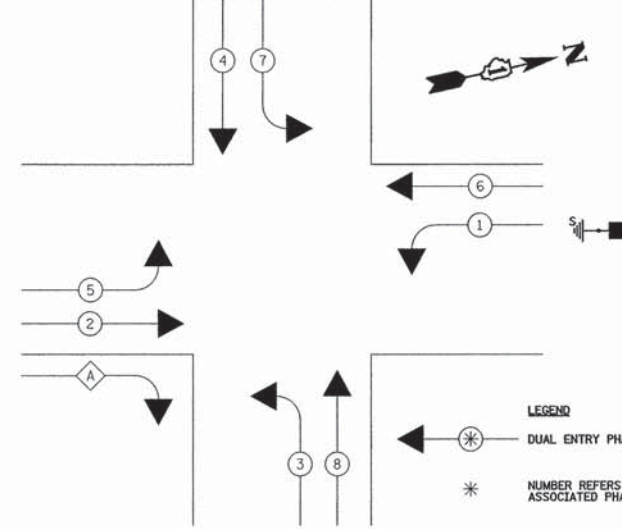
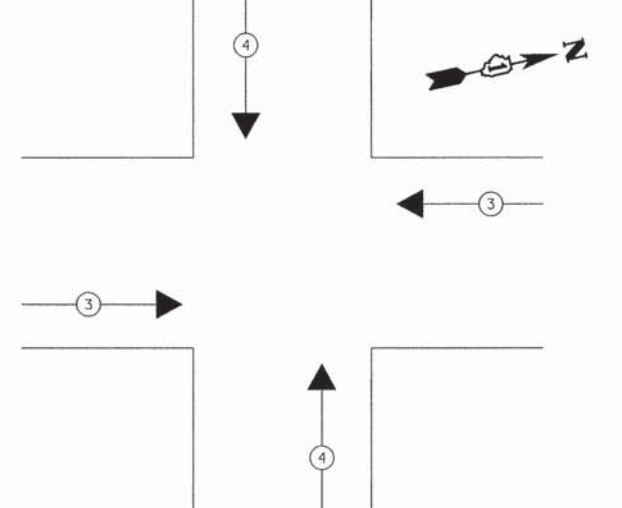


CONTROLLER SEQUENCE AND PHASE DESIGNATION DIAGRAM



LEGEND
 * DUAL ENTRY PHASE
 * NUMBER REFERS TO ASSOCIATED PHASE

EMERGENCY VEHICLE PREEMPTION SEQUENCE

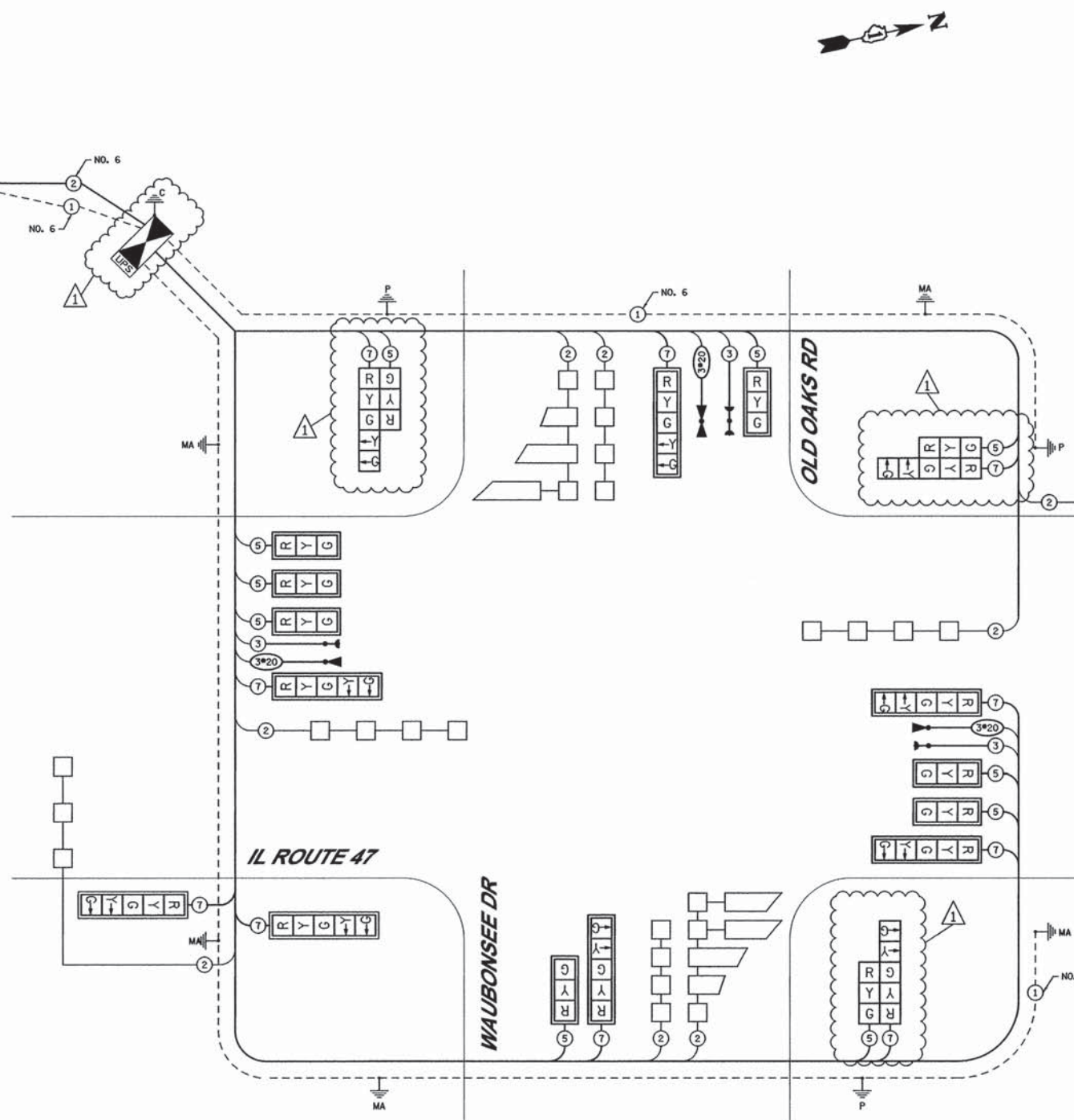


PROPOSED EMERGENCY VEHICLE PREEMPTORS			
EMERGENCY VEHICLE PREEMPTOR	3	4	
MOVEMENT	←	↑	↓

I.D.O.T. TRAFFIC SIGNAL INSTALLATION ELECTRICAL SERVICE REQUIREMENTS					TOTAL WATTAGE
TYPE	NO. OF LAMPS	WATTAGE INCAND.	LED	% OPERATION	
SIGNAL (RED)	20	17		0.50	170.00
(YELLOW)	20	25		0.25	125.00
(GREEN)	20	15		0.25	75.00
ARROW	20	12		0.10	24.00
CONTROLLER		100		1.00	100.00

ENERGY COSTS TO: TOTAL = 494.00
 WAUBONSEE COMMUNITY COLLEGE
 ILLINOIS ROUTE 47 @ WAUBONSEE DRIVE
 SUGAR GROVE, ILLINOIS 60554
 ENERGY SUPPLY: CONTACT: TOM PERKINS
 PHONE: (630) 723 - 2127
 COMPANY: COMED

THE EMERGENCY VEHICLE PREEMPTION EQUIPMENT FOR THIS PROJECT SHALL BE OPTICOM MODEL 575. TO MATCH THE EXISTING EQUIPMENT.



SCHEDULE OF QUANTITIES

ITEM	UNIT	TOTAL
72000100	SIGN PANEL - TYPE 1	SQ FT 99
72000200	SIGN PANEL - TYPE 2	SQ FT 45
80500020	SERVICE INSTALLATION - POLE MOUNTED	EACH 1
81028200	UNDERGROUND CONDUIT, GALVANIZED STEEL, 2" DIA.	FOOT 825
81028210	UNDERGROUND CONDUIT, GALVANIZED STEEL, 2 1/2" DIA.	FOOT 35
81028220	UNDERGROUND CONDUIT, GALVANIZED STEEL, 3" DIA.	FOOT 90
81028240	UNDERGROUND CONDUIT, GALVANIZED STEEL, 4" DIA.	FOOT 395
81400100	HANDHOLE	EACH 3
81400200	HEAVY-DUTY HANDHOLE	EACH 4
81400300	DOUBLE HANDHOLE	EACH 2
85700200	FULL-ACTUATED CONTROLLER AND TYPE IV CABINET	EACH 1
87301215	ELECTRIC CABLE IN CONDUIT, SIGNAL NO. 14 2C	FOOT 1,833
87301225	ELECTRIC CABLE IN CONDUIT, SIGNAL NO. 14 3C	FOOT 934
87301245	ELECTRIC CABLE IN CONDUIT, SIGNAL NO. 14 5C	FOOT 2,100
87301255	ELECTRIC CABLE IN CONDUIT, SIGNAL NO. 14 7C	FOOT 2,488
87301295	ELECTRIC CABLE IN CONDUIT, SIGNAL NO. 20 3C	FOOT 934
87301805	ELECTRIC CABLE IN CONDUIT, SERVICE, NO. 6 2 C	FOOT 68
87301900	ELECTRIC CABLE IN CONDUIT, EQUIPMENT GROUNDING CONDUCTOR, NO. 6 1C	FOOT 654
87502500	TRAFFIC SIGNAL POST, GALVANIZED STEEL 16 FT.	EACH 3
87700210	STEEL MAST ARM ASSEMBLY AND POLE, 34 FT.	EACH 1
87700270	STEEL MAST ARM ASSEMBLY AND POLE, 46 FT.	EACH 2
87700310	STEEL MAST ARM ASSEMBLY AND POLE, 54 FT.	EACH 1
87700418	STEEL MAST ARM ASSEMBLY AND POLE, 68 FT.	EACH 1
87800100	CONCRETE FOUNDATION, TYPE A	FOOT 12
87800150	CONCRETE FOUNDATION, TYPE C	FOOT 4
87800415	CONCRETE FOUNDATION, TYPE E 96-INCH DIAMETER	FOOT 52
87800420	CONCRETE FOUNDATION, TYPE E 42-INCH DIAMETER	FOOT 25
88030020	SIGNAL HEAD, LED, 1-FACE, 3-SECTION, MAST-ARM MOUNTED	EACH 7
88030110	SIGNAL HEAD, LED, 1-FACE, 5-SECTION, MAST-ARM MOUNTED	EACH 7
88030240	SIGNAL HEAD, LED, 2-FACE, 1-3 SECTION, 1-5 SECTION, BRACKET MOUNTED	EACH 3
88200210	TRAFFIC SIGNAL BACKPLATE, LOUVERED, ALUMINUM	EACH 14
88500100	INDUCTIVE LOOP DETECTOR	EACH 8
88600100	DETECTOR LOOP, TYPE I	FOOT 1,320
88700200	LIGHT DETECTOR	EACH 4
88700300	LIGHT DETECTOR AMPLIFIER	EACH 1

*100% OF COST TO THE WAUBONSEE COMMUNITY COLLEGE

RESTORATION OF WORK AREA. RESTORATION OF THE TRAFFIC SIGNAL WORK AREA SHALL BE INCLUDED IN THE RELATED PAY ITEMS SUCH AS FOUNDATION, CONDUIT, HANDHOLE, TRENCH AND BACKFILL, UNDERGROUND RACEWAYS, ETC. ALL ROADWAY SURFACES SUCH AS SHOULDERS, MEDIANS, SIDEWALKS, PAVEMENT, ETC. SHALL BE REPLACED IN KIND. ALL DAMAGE TO MOWED LAWNS SHALL BE REPLACED WITH AN APPROVED SOD, AND ALL DAMAGE TO UNMOWED FIELDS SHALL BE SEEDED. ALL BRICK PAVERS DISTURBED IN THE WORK AREA SHALL BE RESTORED TO THEIR ORIGINAL CONFIGURATION AS DIRECTED BY THE ENGINEER. ALL DAMAGED BRICK PAVERS SHALL BE REPLACED WITH A COMPARABLE MATERIAL APPROVED BY THE ENGINEER. RESTORATION OF THE WORK AREA SHALL BE INCLUDED IN THE CONTRACT WITHOUT ANY EXTRA COMPENSATION ALLOWED TO THE CONTRACTOR.

CABLE PLAN

STATE OF ILLINOIS
 DEPARTMENT OF TRANSPORTATION

ILLINOIS ROUTE 47 AT WAUBONSEE DRIVE
 CABLE PLAN AND SEQUENCE OF OPERATION
 SCALE: N/A SHEET SGL 8 OF 9 STA. TO STA.

F.A.P. RTE. 326	SECTION 11-00001-00-CH	COUNTY KANE	TOTAL SHEETS 55	SHEET NO. 34
CONTRACT NO. 63829				
FED. ROAD DIST. NO. ILLINOIS FED. AID PROJECT				

PATRICK ENGINEERING INC. 4970 VARSITY DRIVE LISLE, IL 60532 patrickengineering.com	USER NAME = #USER#	DESIGNED - TWR	REVISED - 3/7/2013
	PLOT CONFIG = #PLTORVS#	DRAWN - TWR	REVISED - 4/15/2013
	PLOT SCALE = #SCALESHORT#	CHECKED - JAH	REVISED - 5/29/2013
	PLOT DATE = #DATE#	DATE - 3/25/2013	REVISED -
	#TIME#		