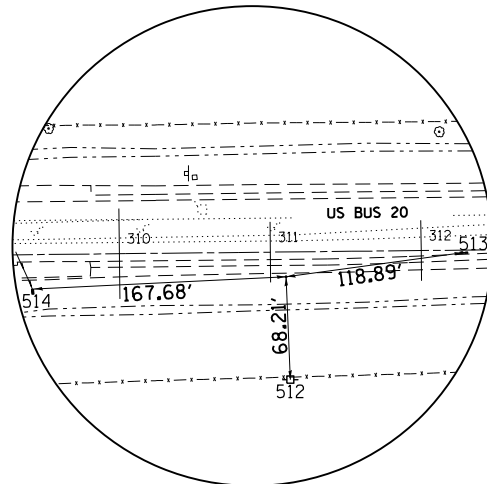
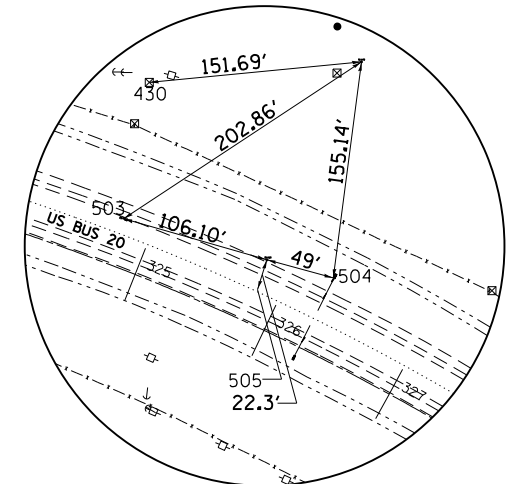


# EXISTING HORIZONTAL & VERTICAL CONTROL



HORIZONTAL CONTROL POINT 91198  
 PHOTO CONTROL H. & V., PIN  
 16.45' Rt Sta 311+10.30  
 N 2043820.5554  
 E 849679.5953  
 Elev. = 788.1349



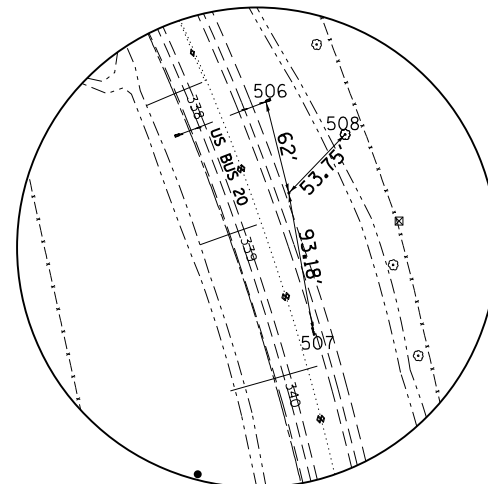
HORIZONTAL CONTROL POINT 911102  
 PHOTO CONTROL H. & V., PIN  
 202.58' Lt Sta 325+83.44  
 N 2043880.3228  
 E 851215.4693  
 Elev. = 783.9356  
 HORIZONTAL CONTROL POINT 911160  
 GPS CONTROL POINT, PIN  
 46.46' Lt Sta 325+81.00  
 N 2043739.4383  
 E 851148.1456  
 Elev. = 788.2302

HORIZONTAL CONTROL POINTS							
POINT	NORTH	EAST	ELEVATION	CHAIN	STATION	OFFSET	DESCRIPTION
A0624	2043844.9087	850431.8428	787.1224	US20BUS	318+62.7614	0.0002' LT	PC, DISK
A0625	2042150.5768	852084.9399	770.4579	US20BUS	345+08.7356	0.0325' LT	PT, DISK
A0626	2040632.8940	852031.8056	764.0791	US20BUS	360+27.3482	0.0537' LT	POT, DISK
91198	2043820.5554	849679.5953	788.1349	US20BUS	311+10.2995	16.4467' RT	PHOTO CONTROL H. & V., PIN
911102	2043880.3228	851215.4693	783.9356	US20BUS	325+83.4360	202.584' LT	PHOTO CONTROL H. & V., PIN
911105	2042776.6499	852034.1090	777.5592	US20BUS	338+87.4617	47.0529' LT	PHOTO CONTROL H. & V., PIN
911116	2039331.3180	851262.7805	766.0233	US20BUS	373+55.0446	722.9416' RT	PHOTO CONTROL H. & V., PIN
911117	2038945.1263	852025.6688	764.8212	US20BUS	377+14.2965	52.997' LT	PHOTO CONTROL H. & V., PK NAIL
911118	2038653.4500	852663.8398	758.6894	US20BUS	379+83.4564	700.9864' LT	PHOTO CONTROL H. & V., PIN
911160	2043739.4383	851148.1456	788.2302	US20BUS	325+81.0021	46.462' LT	GPS CONTROL POINT, PIN
911161	2040885.3956	852042.0283	763.8549	US20BUS	357+74.6435	1.4319' LT	GPS CONTROL POINT, PIN
65709271	2043920.2523	849236.8162	786.4762	US20BUS	306+68.5925	87.8977' LT	DISTRICT NETWORK MONUMENT, PERM. SURVEY MARKER
65722882	2043730.7702	846864.5247	782.2275	US20BUS	282+94.4408	76.6445' RT	DISTRICT NETWORK MONUMENT, PERM. SURVEY MARKER
WHA100	2043156.8796	851781.0799	779.3100	US20BUS	334+38.0984	1.5142' RT	GPS CONTROL POINT, PIN
WHA101	2039955.5950	852057.1323	766.5600	US20BUS	367+03.3457	49.0721' LT	GPS CONTROL POINT, PIN

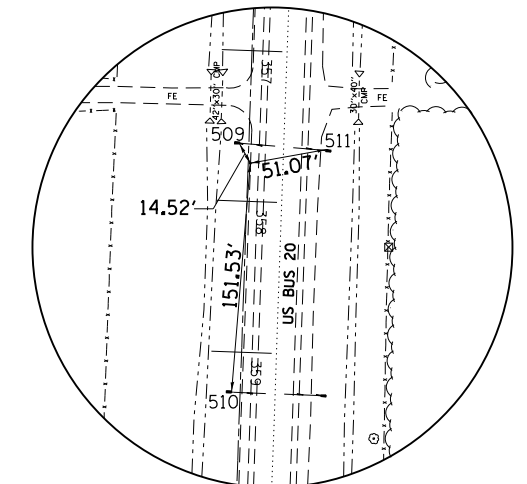
SURVEY WORK POINTS							
POINT	NORTH	EAST	ELEVATION	CHAIN	STATION	OFFSET	DESCRIPTION
100	2039120.0618	851707.7864	761.3410	US20BUS	375+50.5949	270.8138' RT	TOPO SURVEY POINT, PIN
101	2039388.6145	851170.7987	766.6728	US20BUS	373+01.0028	816.8725' RT	TOPO SURVEY POINT, PK NAIL

BENCH MARKS							
POINT	NORTH	EAST	ELEVATION	CHAIN	STATION	OFFSET	DESCRIPTION
430	2043865.7057	851064.4892	784.6178	US20BUS	324+61.9004	131.2625' LT	R.O.W. MARKER, TOP
431	2043047.6547	851848.3015	782.2141	US20BUS	335+66.5939	5.1017' RT	BENCH TIE, CHISELED SQUARE
432	2039733.7304	852052.4496	765.4097	US20BUS	369+25.2382	52.1581' LT	HEADWALL, CHISELED SQUARE
433	2038828.4412	852025.8532	763.5590	US20BUS	378+30.9036	57.2656' LT	MISC. CONCRETE SLAB, CHISELED SQUARE
434	2038037.7296	851940.8526	770.1210	US20BUS	386+24.1060	0.0059' RT	WALL, DISK

REFERENCE TIES							
POINT	NORTH	EAST	CHAIN	STATION	OFFSET	DESCRIPTION	
500	2043917.2160	849225.6925	US20BUS	306+57.4375	84.9784' LT	FENCE CORNER, CORNER	
501	2043935.9448	849259.8088	US20BUS	306+91.7488	103.3477' LT	TREE DECIDUOUS	
502	2043982.3782	849280.9151	US20BUS	307+13.3419	149.5567' LT	FENCE CORNER, CORNER	
503	2043768.6162	851046.1372	US20BUS	324+78.1523	33.9386' LT	PAVEMENT STATION NUMBER	
504	2043726.4904	851195.3953	US20BUS	326+27.7960	54.9973' LT	PAVEMENT STATION NUMBER, CORNER	
505	2043718.1392	851141.5405	US20BUS	325+83.7973	24.3459' LT	CORNER	
506	2042836.7847	852019.0649	US20BUS	338+27.7465	54.3191' LT	CORNER, CORNER	
507	2042684.9048	852050.3704	US20BUS	339+77.4912	33.9126' LT	PAVEMENT STATION NUMBER	
508	2042815.4052	852071.3500	US20BUS	338+64.8698	95.3564' LT	TREE DECIDUOUS	
509	2040898.0913	852034.9833	US20BUS	357+62.2022	6.0532' RT	TREE DECIDUOUS, CORNER	
510	2040734.3758	852029.6140	US20BUS	359+26.0053	5.6887' RT	CORNER, CORNER	
511	2040894.3908	852092.2998	US20BUS	357+63.8942	51.3577' LT	CORNER, CORNER	
512	2043752.4024	849682.4527	US20BUS	311+12.4406	84.626' RT	POWER POLE WITH TRANSFORMER	
513	2043836.5543	849797.4076	US20BUS	312+28.2734	1.6867' RT	PAVEMENT STATION NUMBER	
514	2043812.4633	849512.1077	US20BUS	309+42.7361	22.7783' RT	PAVEMENT STATION NUMBER, CORNER	



HORIZONTAL CONTROL POINT 911105  
 PHOTO CONTROL H. & V., PIN  
 47.05' Lt Sta 338+87.46  
 N 2042776.6499  
 E 852034.1090  
 Elev. = 777.5592



HORIZONTAL CONTROL POINT 911161  
 GPS CONTROL POINT, PIN  
 1.43' Lt Sta 357+74.64  
 N 2040885.3956  
 E 852042.0283  
 Elev. = 763.8549