

# PRE-STAGE

PRE-STAGE NOTES:  
 STA. 308+66 TO 368+30 LT







1. SETUP & USE TRAFFIC CONTROL & PROTECTION 701326
2. REMOVE THE EXISTING PAVED SHOULDER
3. PLACE THE AGGREGATE SUBGRADE IMPROVEMENT (SEE SCHEDULE FOR THICKNESS)
4. CONSTRUCT THE HOT-MIX ASPHALT SHOULDERS
5. DRESS UP SLOPES AND DITCHES

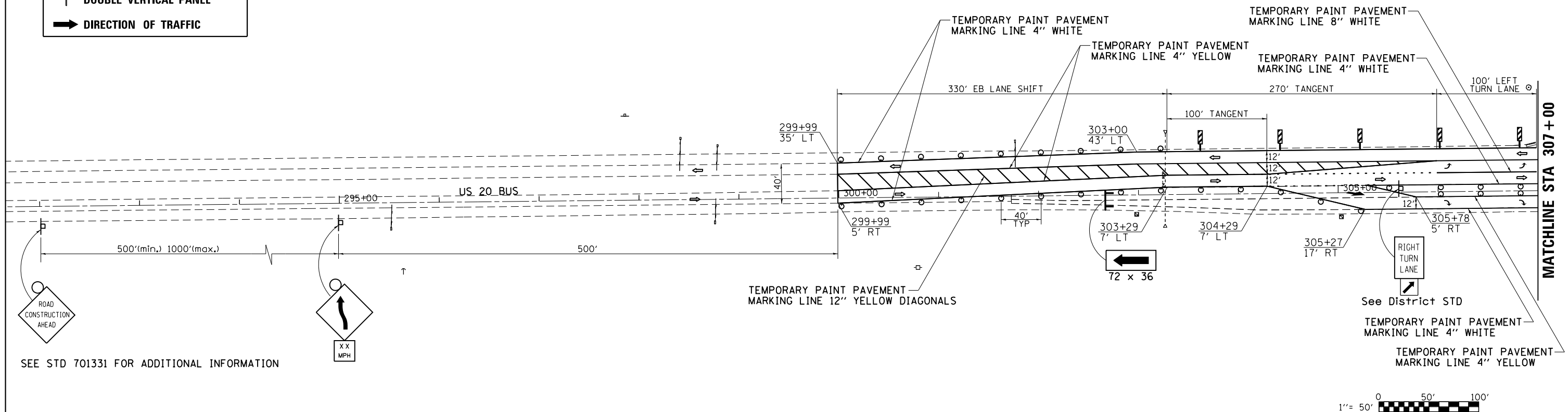
# STAGE 1

STAGE 1 NOTES:  
 STA. 308+84 TO 366+00

1. SETUP & USE TRAFFIC CONTROL & PROTECTION 701331 & AS SHOWN IN THE STAGING PLANS
2. REMOVE THE EXISTING PAVED SHOULDER & PAVEMENT REMOVAL (SEE SCHEDULE FOR LOCATIONS)
3. PLACE THE DRAINAGE ITEMS AND UNDERDRAIN PIPES
4. PLACE EMBANKMENT TO BUILD UP THE BASE & SIDE SLOPES
5. PLACE THE AGGREGATE SUBGRADE IMPROVEMENT (SEE SCHEDULE FOR THICKNESS)
6. CONSTRUCT THE 7 1/2 " HOT-MIX BINDER COURSE, IL-19.0, N70
7. CONSTRUCT THE CONCRETE BARRIER BASE & CONCRETE BARRIER, VARIABLE CROSS-SECTION, 32" HEIGHT (AS SCHEDULED)
8. CONSTRUCT THE HOT-MIX ASPHALT SHOULDERS 5 1/2 " (AS SCHEDULED)
9. PLACE THE POLYMERIZED LEVELING BINDER (MACHINE METHOD), N70, POLYMERIZED HOT-MIX ASPHALT SURFACE COURSE, MIX "F", N70, AND HOT-MIX ASPHALT SURFACE COURSE, MIX "C", N50
10. DRESS UP SLOPES AND DITCHES

## LEGEND

|   |  |
|---|--|
|    | WORK ZONE                                      |
|    | TYPE III BARRICADE                             |
|   | SIGN   |
|  | DRUM WITH MONODIRECTIONAL STEADY BURNING LIGHT |
|  | DOUBLE VERTICAL PANEL                          |
|  | DIRECTION OF TRAFFIC                           |



SEE STD 701331 FOR ADDITIONAL INFORMATION



|                                       |                                      |            |           |   |                                     |       |    |        |             |         |        |              |           |       |     |    |
|---------------------------------------|--------------------------------------|------------|-----------|---|-------------------------------------|-------|----|--------|-------------|---------|--------|--------------|-----------|-------|-----|----|
| FILE NAME =                           | USER NAME = rundbladerr              | DESIGNED - | REVISED - | <b>STATE OF ILLINOIS<br/>DEPARTMENT OF TRANSPORTATION</b> | <b>US 20 BUS<br/>STAGING DETAIL</b> |       |    |        | F.A.P. RTE. | SECTION | COUNTY | TOTAL SHEETS | SHEET NO. |       |     |    |
| et:\pw\work\p\dot\undbladerr\d0275077 | D206211-sh1-staging.dgn              | DRAWN -    | REVISED - |   | SCALE:                              | SHEET | OF | SHEETS | STA.        | TO      | STA.   | 517          | IR        | BOONE | 126 | 43 |
| Default                               | PLOT SCALE = 100.0000' / in.         | CHECKED -  | REVISED - |   | CONTRACT NO. 64C97                  |       |    |        |             |         |        |              |           |       |     |    |
|                                       | PLOT DATE = Fri May 15 13:38:40 2013 | DATE -     | REVISED - |   | ILLINOIS FED. AID PROJECT           |       |    |        |             |         |        |              |           |       |     |    |