

F.A.P. RTE. NO.	SECTION	COUNTY	TOTAL SHEETS	SHEET NO.
642	D2 DECK REPAIR 2013-4	CARROLL	25	1
FED. ROAD DIST. NO.	ILLINOIS CONTRACT NO. 64J55			

D-92-038-13



LOCATION OF SECTION INDICATED THUS:

FOR INDEX OF SHEETS, SEE SHEET NO. 2  
FOR STATE STANDARDS, SEE SHEET NO. 2

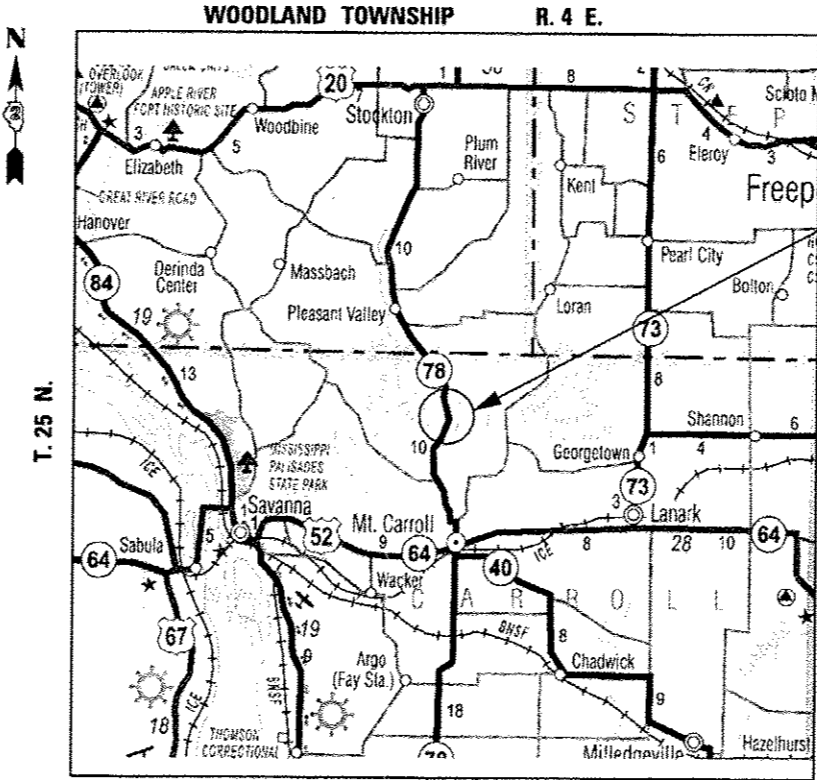
STATE OF ILLINOIS  
DEPARTMENT OF TRANSPORTATION  
DIVISION OF HIGHWAYS

**PROPOSED  
HIGHWAY PLANS**

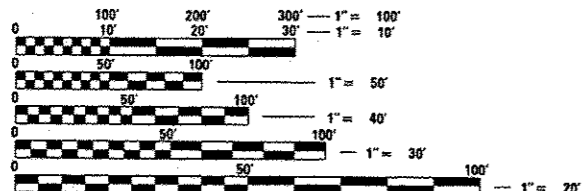
F.A.P. ROUTE 642 (IL RTE. 78)  
SECTION: D2 DECK REPAIR 2013-4

**S.N. 008-0035 OVER TRIBUTARY TO EAST FORK PLUM RIVER  
BRIDGE REHABILITATION  
CARROLL COUNTY  
C-92-079-13**

PROJECT LOCATED IN THE  
UNINCORPORATED CARROLL COUNTY



PROJECT BEGINS  
STA. 325 + 80  
BRIDGE  
S.N. 008-0035  
PROJECT ENDS  
STA. 331 + 85



FULL SIZE PLANS HAVE BEEN PREPARED USING STANDARD ENGINEERING SCALES. REDUCED SIZED PLANS WILL NOT CONFORM TO STANDARD SCALES. IN MAKING MEASUREMENTS ON REDUCED PLANS, THE ABOVE SCALES MAY BE USED.

J.U.L.I.E.  
JOINT UTILITY LOCATING INFORMATION FOR EXCAVATORS  
1-800-892-0123  
OR 811

PROJECT MANAGER: MAHMOUD ETEMADI (815) 284-5393

CONTRACT NO. 64J55

GROSS LENGTH OF PROJECT = 605 FEET = 0.115 MILES  
NET LENGTH OF PROJECT = 605 FEET = 0.115 MILES



*Birinder S. Sachdeva* 3-8-13  
BIRINDER S. SACHDEVA, P.E. DATE  
EXPIRES: 11-30-2013

STATE OF ILLINOIS  
DEPARTMENT OF TRANSPORTATION  
DIVISION OF HIGHWAYS  
SUBMITTED 3-19 2013  
*Paul Roeter*  
DEPUTY DIRECTOR OF HIGHWAYS, REGION ENGINEER  
*May 10 2013*  
*John D. Baranelli, P.E.*  
ENGINEER OF DESIGN AND ENVIRONMENT  
*May 10 2013*  
*Orin Osuan, P.E.*  
DIRECTOR OF HIGHWAYS, CHIEF ENGINEER

CHRISTIAN-ROGE & ASSOCIATES, INC.  
ENGINEERS - PLANNERS - SURVEYORS  
211 W. WACKER DRIVE CHICAGO, IL 60606  
TELEPHONE: 312-372-2023

PRINTED BY THE AUTHORITY  
OF THE STATE OF ILLINOIS