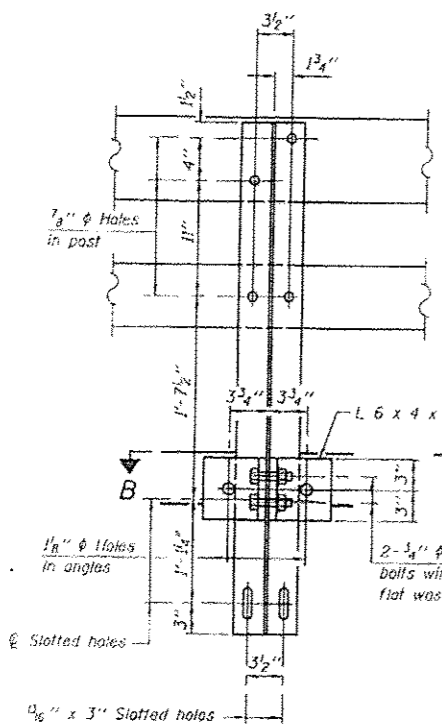
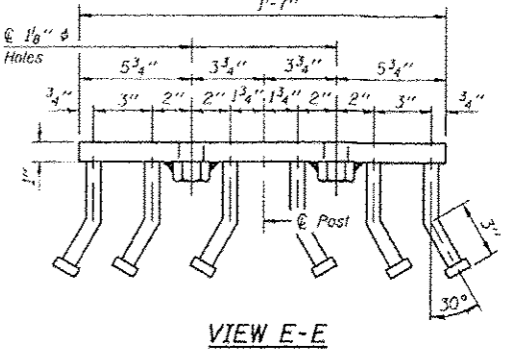
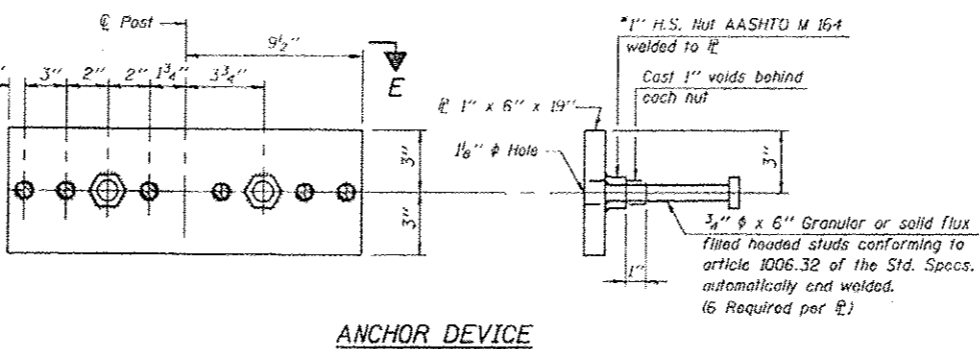
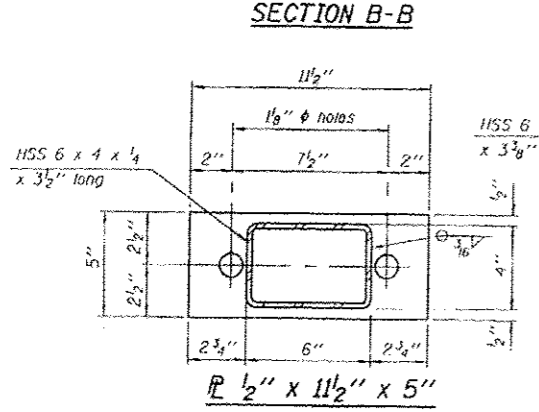
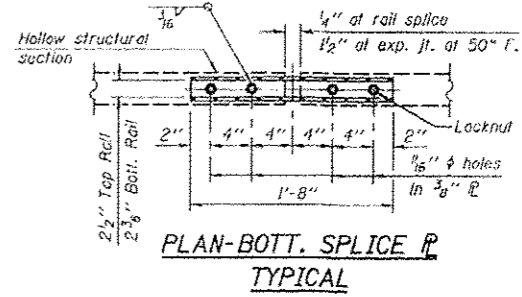
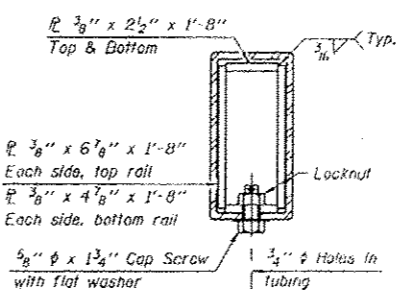
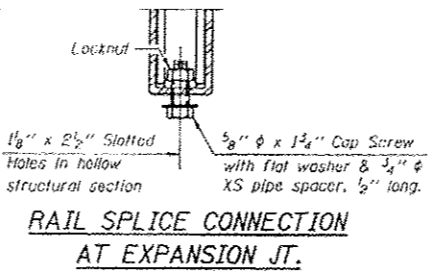
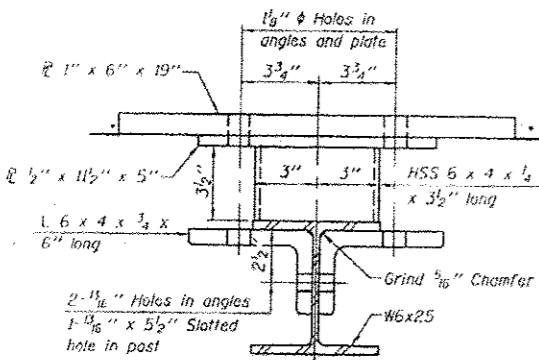
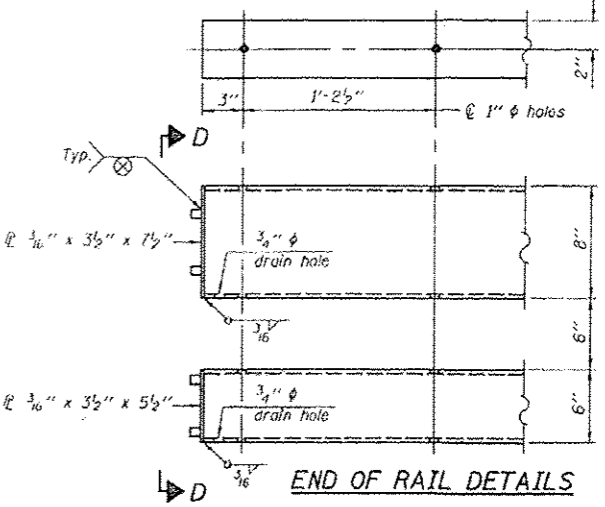
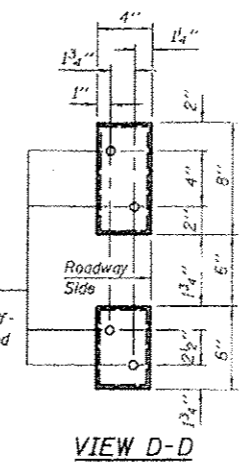
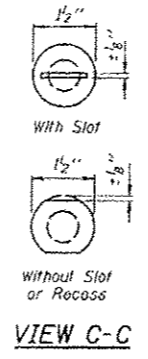
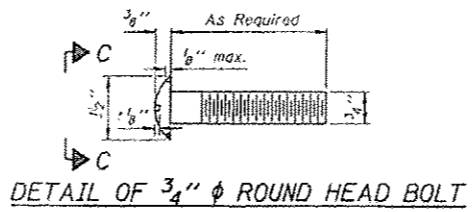
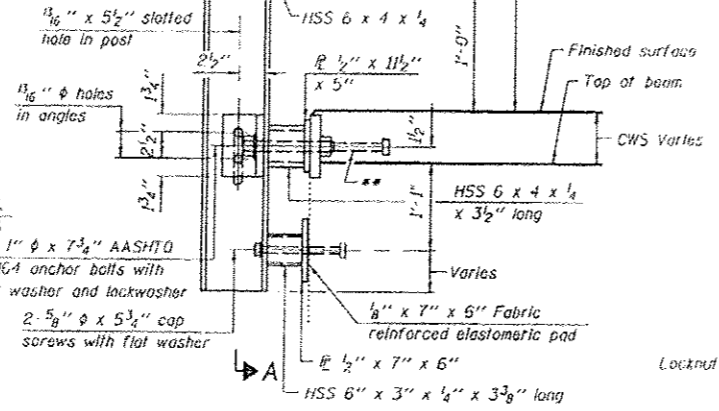


FILE NAME = J:\102769_Plum River\Structural\CADD Sheets\264-ISE-05-reiling.steel.dgn



4- $\frac{3}{4}$ " ϕ x 6" Round Head Bolts (With slot or approved recess in head) with locknut & flat washer. $\frac{1}{8}$ " ϕ holes in hollow structural section may be drilled in the field



Notes:
 All field drilled holes shall be coated with an approved zinc rich paint before erection.
 For multi-span bridges, sufficient $\frac{1}{4}$ " x 6" x 1'-2" galvanized steel shims shall be provided to align rail between adjacent spans. Cost included with Steel Rolling, Type SM.
 Steel rail elements shall be galvanized according to Article 509.05 of the Standard Specifications.
 The studs of the anchor devices shall be placed below the top reinforcement bars and the outermost longitudinal reinforcement bar shall be placed directly above the studs of the rail post anchor device.
 Bottom section of existing rail anchor device to remain in place.

BILL OF MATERIAL

Item	Unit	Quantity
Steel Rolling, Type SM	Foot	134

(6'-3" Maximum Post Spacing) (5" minimum to 7 1/8" maximum CWS thickness)



USER NAME - 100T	DESIGNED - B.N.S./J.W./H.S.J.	REVISED -
PLT SCALE - 1/8" = 1'-0"	CHECKED - B.N.S./H.S.J./J.W.	REVISED -
PLT DATE - 5/9/2013	DRAWN - F.M.	REVISED -
	DATE - MARCH, 2013	REVISED -

STATE OF ILLINOIS
 DEPARTMENT OF TRANSPORTATION

STEEL RAILING, TYPE SM WITH CONCRETE WEARING SURFACE
 STRUCTURE NO. 008-0035

F.A.P. RITE	SECTION	COUNTY	TOTAL SHEET NO.
642	D2 DECK REPAIR 2013-4	CARROLL	25
			19
			CONTRACT NO. 64J55

SHEET NO. 56 OF 57 SHEETS

ILLINOIS FED. AID PROJECT