

FOR INDEX OF SHEETS, SEE SHEET NO. 2
 FOR STATE STANDARDS, SEE SHEET NO. 2

STATE OF ILLINOIS 06-14-13 LETTING ITEM 052

F.A.P. RTE.	SECTION	COUNTY	TOTAL SHEETS	SHEET NO.
642	D2 DECK REPAIR 2013-4	CARROLL	25	1
FED. ROAD DIST. NO.		ILLINOIS CONTRACT NO. 64J55		

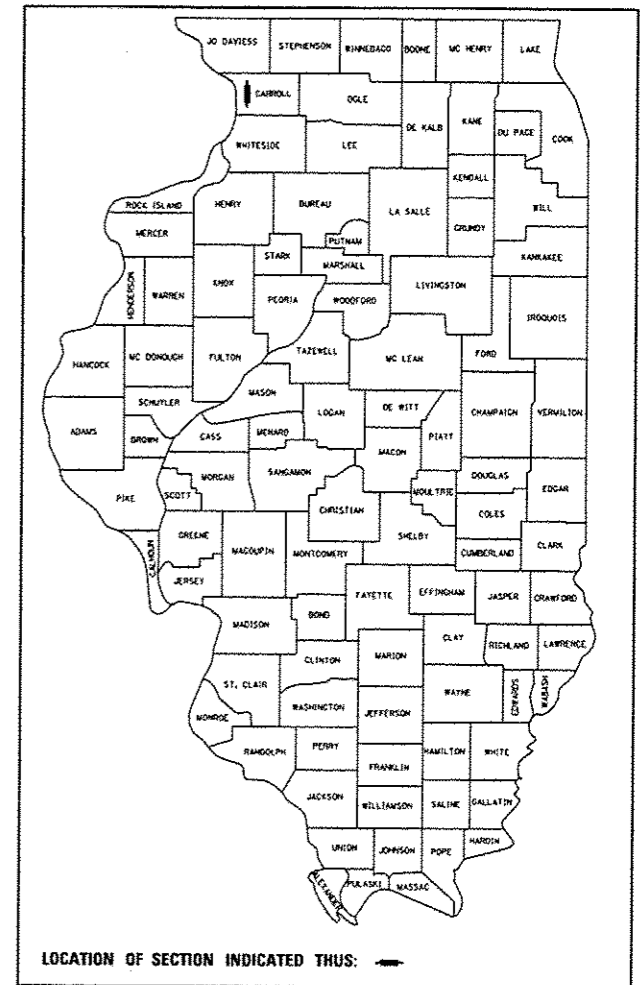
DEPARTMENT OF TRANSPORTATION
 DIVISION OF HIGHWAYS

**PROPOSED
 HIGHWAY PLANS**

F.A.P. ROUTE 642 (IL RTE. 78)
 SECTION: D2 DECK REPAIR 2013-4

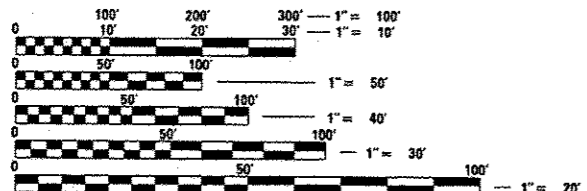
**S.N. 008-0035 OVER TRIBUTARY TO EAST FORK PLUM RIVER
 BRIDGE REHABILITATION
 CARROLL COUNTY
 C-92-079-13**

D-92-038-13



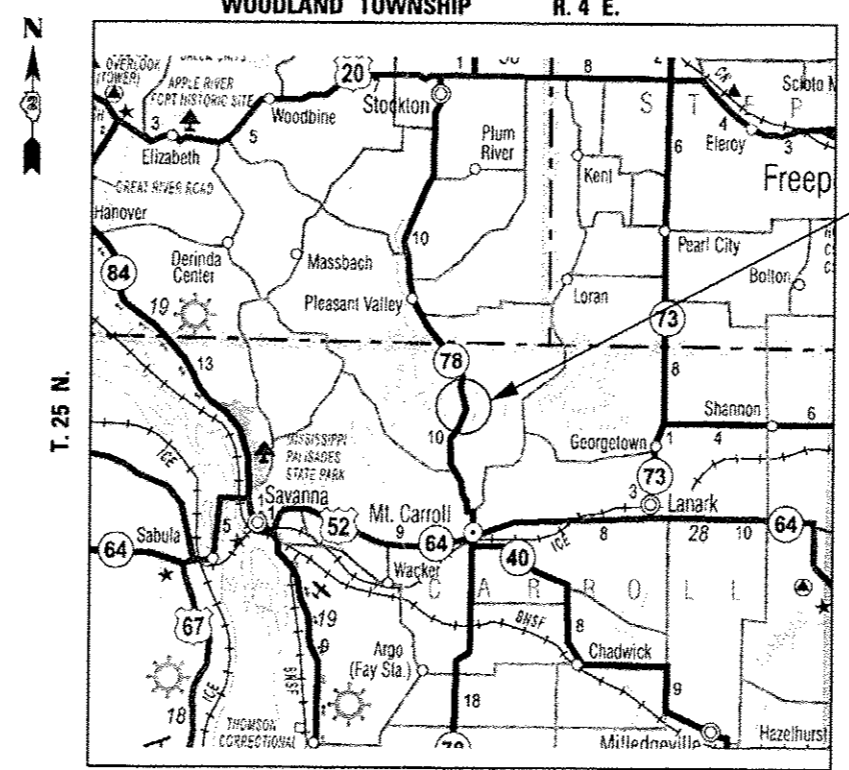
**PROJECT LOCATED IN THE
 UNINCORPORATED CARROLL COUNTY**

**PROJECT BEGINS
 STA. 325 + 80
 BRIDGE
 S.N. 008-0035
 PROJECT ENDS
 STA. 331 + 85**



FULL SIZE PLANS HAVE BEEN PREPARED USING STANDARD ENGINEERING SCALES. REDUCED SIZED PLANS WILL NOT CONFORM TO STANDARD SCALES. IN MAKING MEASUREMENTS ON REDUCED PLANS, THE ABOVE SCALES MAY BE USED.

J.U.L.I.E.
 JOINT UTILITY LOCATING INFORMATION FOR EXCAVATORS
 1-800-892-0123
 OR 811



**GROSS LENGTH OF PROJECT = 605 FEET = 0.115 MILES
 NET LENGTH OF PROJECT = 605 FEET = 0.115 MILES**



Birinder S. Sachdeva 3-8-13
 BIRINDER S. SACHDEVA, P.E.
 EXPIRES: 11-30-2013
 DATE

STATE OF ILLINOIS
 DEPARTMENT OF TRANSPORTATION
 DIVISION OF HIGHWAYS

SUBMITTED 3-19-2013
Paul Roeter
 DEPUTY DIRECTOR OF HIGHWAYS, REGION ENGINEER

May 10 2013
John D. Baranelli, P.E.
 ENGINEER OF DESIGN AND ENVIRONMENT

May 10 2013
Orin Osuan, P.E.
 DIRECTOR OF HIGHWAYS, CHIEF ENGINEER

PROJECT MANAGER: MAHMOUD ETEMADI (815) 284-5393

CONTRACT NO. 64J55

CR&A
 CHRISTIAN-ROGE & ASSOCIATES, INC.
 ENGINEERS - PLANNERS - SURVEYORS
 211 W. WACKER DRIVE CHICAGO, IL 60606
 TELEPHONE: 312-372-2023

**PRINTED BY THE AUTHORITY
 OF THE STATE OF ILLINOIS**

DATE	
BY	
CHECKED	
REVIEWED	
PLOTTED	
TEMPLATE	
AREAS	
CHECKED	
FINAL SURVEY	
NOTE BOOK	
NO.	

DATE	
BY	
CHECKED	
REVIEWED	
PLOTTED	
TEMPLATE	
AREAS	
CHECKED	
ORIGINAL SURVEY	
NOTE BOOK	
NO.	

SUMMARY OF QUANTITIES				CONSTRUCTION CODE		
CODE NO.	ITEM	UNIT	TOTAL QUANTITY	0014 BRIDGE REPAIR 100% STATE		
50300260	BRIDGE DECK GROOVING	SQ YD	208	208		
50800205	REINFORCEMENT BARS, EPOXY COATED	POUND	5890	5,890		
50800515	BAR SPLICERS	EACH	82	82		
50901050	STEEL RAILING, TYPE SM	FOOT	134	134		
* 63000001	STEEL PLATE BEAM GUARDRAIL, TYPE A, 6 FOOT POSTS	FOOT	75	75		
* 63100087	TRAFFIC BARRIER TERMINAL, TYPE 6A	EACH	4	4		
* 63100169	TRAFFIC BARRIER TERMINAL, TYPE 1 (SPECIAL) FLARED	EACH	4	4		
63200310	GUARDRAIL REMOVAL	FOOT	443	443		
67000400	ENGINEER'S FIELD OFFICE, TYPE A	CAL MO	4	4		
67100100	MOBILIZATION	L SUM	1	1		
70100405	TRAFFIC CONTROL AND PROTECTION, STANDARD 701321	EACH	1	1		
70100450	TRAFFIC CONTROL AND PROTECTION, STANDARD 701201	L SUM	1	1		
70100500	TRAFFIC CONTROL AND PROTECTION, STANDARD 701326	L SUM	1	1		
70103815	TRAFFIC CONTROL SURVEILLANCE	CAL DA	10	10		

* SPECIALTY ITEM

FILE NAME: 0264H21-shl-S0082.dgn
 PLOT DATE: 3/8/2013
 PLOT SCALE: 100.0000' / IN.



CHRISTIAN-ROGE & ASSOCIATES, INC.
 ENGINEERS-PLANNERS-SURVEYORS
 211 WEST WACKER DRIVE
 CHICAGO, ILLINOIS 60605
 PHONE: (312)372-2023 FAX: (312)372-5274

DESIGNED - M.P.	REVISED -
DRAWN - K.R.K.	REVISED -
CHECKED - M.P./K.R.K.	REVISED -
DATE - JANUARY 2013	REVISED -

STATE OF ILLINOIS
 DEPARTMENT OF TRANSPORTATION

SUMMARY OF QUANTITIES
 I-78 OVER EAST FORK PLUM RIVER

SCALE: SHEET NO. OF SHEETS STA. TO STA.

F.A.P. RTE.	SECTION	COUNTY	TOTAL SHEETS	SHEET NO.
642	02 DECK REPAIR 2013-4	CARROLL	25	4
ILLINOIS			CONTRACT NO. 64J55	

DATE	
BY	
DESIGNED	
DRAWN	
CHECKED	
DATE	
REVISIONS	
NO.	

DATE	
BY	
DESIGNED	
DRAWN	
CHECKED	
DATE	
REVISIONS	
NO.	

SUMMARY OF QUANTITIES				CONSTRUCTION CODE		
CODE NO.	ITEM	UNIT	TOTAL QUANTITY	0014 BRIDGE REPAIR 100% STATE		
70106500	TEMPORARY BRIDGE TRAFFIC SIGNALS	EACH	1	1		
70106700	TEMPORARY RUMBLE STRIPS	EACH	6	6		
70300100	SHORT TERM PAVEMENT MARKING	FOOT	184	184		
70300220	TEMPORARY PAVEMENT MARKING - LINE 4"	FOOT	5,615	5,615		
70300280	TEMPORARY PAVEMENT MARKING - LINE 24"	FOOT	24	24		
70301000	WORK ZONE PAVEMENT MARKING REMOVAL	SQ FT	1,785	1,785		
70400100	TEMPORARY CONCRETE BARRIER	FOOT	525	525		
70400200	RELOCATE TEMPORARY CONCRETE BARRIER	FOOT	525	525		
70600251	IMPACT ATTENUATORS, TEMPORARY (NON- REDIRECTIVE, NARROW), TEST LEVEL 3	EACH	2	2		
70600352	IMPACT ATTENUATORS, RELOCATE (NON- REDIRECTIVE, NARROW), TEST LEVEL 3	EACH	2	2		
* 78005110	EPOXY PAVEMENT MARKING - LINE 4"	FOOT	2,860	2,860		
* 78200410	GUARDRAIL MARKERS, TYPE A	EACH	10	10		
* 78200430	GUARDRAIL MARKERS, TYPE C	EACH	4	4		
* 78201000	TERMINAL MARKER - DIRECT APPLIED	EACH	4	4		

* SPECIALTY ITEM

FILE NAME: 0264421-shr-50083.dgn
 PLOT DATE: 3/8/2013
 PLOT SCALE: 100.0000 / IN.

CR & A
 CHRISTIAN-ROGE & ASSOCIATES, INC.
 ENGINEERS-PLANNERS-SURVEYORS
 211 WEST WACKER DRIVE
 CHICAGO, ILLINOIS 60606
 PHONE: (312)372-2023 FAX: (312)372-5274

DESIGNED - M.P.	REVISED -
DRAWN - K.R.K.	REVISED -
CHECKED - M.P./K.R.K.	REVISED -
DATE - JANUARY 2013	REVISED -

STATE OF ILLINOIS
 DEPARTMENT OF TRANSPORTATION

SUMMARY OF QUANTITIES			
I-78 OVER EAST FORK PLUM RIVER			
F.A.P. RTE. 642	SECTION 02 DECK REPAIR 2013-4	COUNTY CARROLL	TOTAL SHEETS 25
SCALE: SHEET NO. OF SHEETS STA. TO STA.			SHEET NO. 5
			CONTRACT NO. 64J55

ILLINOIS

SCHEDULE OF QUANTITIES

EARTH EXCAVATION (WIDENING)					20200500
					Cu Yd
Pre stage					
NB	326+00.00	328+45.00			73.0
NB	329+40.00	331+85.00			76.0
Stage 1					
SB	325+80.00	328+42.00			128.0
SB	329+10.70	331+70.00			134.0
Stage 2					
NB	326+86.00	328+58.00			63.0
NB	329+29.00	330+55.80			50.0
TOTAL					524.0

EROSION CONTROL BLANKET							25100630
TOPSOIL FURNISH AND PLACE, 4"							21101615
	sta	sta	length(ft)	width(ft)	SQ YD	SQ YD	
NB (Rt)	326+00.00	328+59.00	259.0	4	115.1	115.1	
	329+28.00	331+85.00	257.0	4	114.2	114.2	
SB (Lt)	325+80.00	328+42.00	262.0	4	116.4	116.4	
	329+11.00	331+70.00	259.0	4	115.1	115.1	
total					460.8	460.8	

SUBBASE GRANULAR MATERIAL, TYPE A 12"					31100910
					Sq Yd
Pre stage					
NB	326+00.00	328+45.00			132.0
	329+40.00	331+85.00			137.0
Stage 1					
SB	325+80.00	328+42.00			231.0
SB	329+11.00	331+70.00			240.0
Stage 2					
NB	326+86.00	328+58.00			114.0
NB	329+29.00	330+55.80			91.0
TOTAL					945.0

LEVELING BINDER (MACHINE METHOD), N50					40600625
					Ton
Stage 1, SB lanes					
SB Lane		327+38.00	328+20.00		7.30
SB Lane		329+50.00	330+32.00		7.30
Stage 2, NB lanes					
NB lanes		327+38.00	328+20.00		7.30
NB Shoulder		327+38.00	328+45.00		8.24
NB Shoulder		329+29.00	330+32.00		6.08
NB lanes		329+50.00	330+32.00		7.30
TOTAL					43.50

HOT-MIX ASPHALT BINDER COURSE, IL-19.0, N50					40603080
					Ton
Stage 1, SB lanes					
Bridge Approach Pavement		328+20.00	328+50.66		8.71
Bridge Approach Shld Pavement		328+30.00	328+42.00		1.52
Bridge Approach Pavement		329+19.34	329+50.00		10.72
Bridge Approach Shld Pavement		329+13.00	329+25.00		1.52
Stage 2, NB lanes					
Bridge Approach Pavement		328+20.00	328+50.66		10.72
Bridge Approach Shld Pavement		328+45.00	328+57.00		1.52
Bridge Approach Pavement		329+19.34	329+50.00		8.71
Bridge Approach Shld Pavement		329+28.00	329+40.00		1.52
TOTAL					44.93

HOT-MIX ASPHALT SURFACE COURSE, MIX "C", N50					40603310
					Ton
Stage 1, SB lanes					
SB Lane		327+38.00	328+50.66		13.11
SB Lane		329+19.34	330+32.00		13.87
Stage 2, NB lanes					
NB lane		327+38.00	328+50.66		11.24
NB lane		329+19.34	330+32.00		10.48
sub total					48.71
Pre Stage NB lanes					
NB Shoulders		326+00.00	328+59.30		12.71
NB Shoulders		329+28.00	331+40.00		12.59
Stage 1, SB lanes					
SB Shoulders		325+80.00	328+42.00		20.3
SB Shoulders		329+10.70	331+70.00		21.4
Stage 2, NB lanes					
NB Shoulders		326+86.00	328+58.00		15.9
NB Shoulders		329+28.00	330+55.80		13.1
sub total					95.96
TOTAL					144.67

HOT-MIX ASPHALT SURFACE REMOVAL, 1 3/4"					44000156
					SQ YD
Stage 1					
SB lanes		327+38.00	328+20.00		100.2
SB lanes		329+50.00	330+32.00		100.2
Stage 2					
NB lanes		327+38.00	328+20.00		100.2
NB shld		327+38.00	328+45.00		53.5
NB lanes		329+50.00	330+32.00		100.2
NB shld		329+40.00	330+32.00		46.0
TOTAL					500.4

HOT-MIX ASPHALT SURFACE REMOVAL, 3"					44000161
					SQ YD
Stage 1, SB lanes					
Bridge Approach Pavement		328+20.00	328+50.66		33.59
Bridge Approach Shld Pavement		328+30.00	328+42.00		5.85
Bridge Approach Pavement		329+19.34	329+50.00		41.35
Bridge Approach Shld Pavement		329+13.00	329+25.00		5.85
Stage 2, NB lanes					
Bridge Approach Pavement		328+20.00	328+50.66		41.35
Bridge Approach Shld Pavement		328+45.00	328+57.00		5.85
Bridge Approach Pavement		329+19.34	329+50.00		33.59
Bridge Approach Shld Pavement		329+28.00	329+40.00		5.85
TOTAL					173.28

HOT-MIX ASPHALT SHOULDERS, 6 1/4"					48203022
					SQ YD
Pre stage					
NB		326+00.00	328+45.00		122.5
NB		329+40.00	331+85.00		122.5
Stage 1					
SB		325+80.00	328+42.00		201.8
SB		329+11.00	331+70.00		211.7
Stage 2					
NB		326+86.00	328+58.00		94.7
NB		329+29.00	330+55.80		76.4
TOTAL					829.6

SHORT TERM PAVEMENT MARKING					70300100
					FOOT
CL Line					
4" DBL YL		324+55.00	333+15.00		184.0
TOTAL					184.0

TEMPORARY PAVEMENT MARKING - LINE 24"					70300280
					FOOT
TEMPORARY PAVEMENT MARKING - LINE 4"					70300220
					FOOT
STAGE 1					
White Edge line (Lt)		325+15	333+05		790
White Edge line (Rt)		326+00	331+85		585
stop bar (NB)		324+55			12
stop bar (SB)		333+15			12
STAGE 2					
White Edge line (Lt)		325+80	331+70		590
White Edge line (Rt)		324+65	332+55		790
Subtotal					2,755
Final Pav Marking					
DBL YL Center Line		324+55	325+25		140
YL Center Line		325+25	333+15		790
YL Skip Dash (10' - 30')		325+25	333+15		210
White Edge line (Lt)		324+55	333+15		860
White Edge line (Rt)		324+55	333+15		860
Subtotal					2,860
TOTAL					5,615

WORK ZONE PAVEMENT MARKING REMOVAL					70301000
					SQ FT
Stage 1					
Edge Line (Lt)		325+15	327+38		74.3
Edge Line (Rt)		326+00	327+38		46.0
Edge Line (Lt)		330+32	333+05		91.0
Edge Line (Rt)		330+32	331+85		51.0
Stage 2					
Edge Line (Lt)		325+80	331+70		196.7
Edge Line (Rt)		324+65	332+55		263.3
stop bar (NB)		324+55			24.0
stop bar (SB)		333+15			24.0
from item 70300100 (Short Term Pav Mrk)					61.3
from item 70300220 (Temp Pav Mrk)					953.3
TOTAL					1,785.0

TEMPORARY CONCRETE BARRIER				70400100
				FOOT
STAGE I				
326+24.3		331+56.5		525
TOTAL				525

RELOCATE TEMPORARY CONCRETE BARRIER				70400200
				FOOT
STAGE II				
326+13.5		331+45.7		525
TOTAL				525

IMPACT ATTENUATORS, TEMPORARY (NON-REDIRECTIVE, NARROW), TEST LEVEL 3					70600251
					EACH
STAGE I					
326+24.30		NB			1
331+56.50		SB			1
TOTAL					2

IMPACT ATTENUATORS, RELOCATE (NON-REDIRECTIVE, NARROW), TEST LEVEL 3					70600352
					EACH
STAGE II					
326+13.50		NB			1
331+45.70		SB			1
TOTAL					2

EPOXY PAVEMENT MARKING - LINE 4"					78005110
					FOOT
DBL YL Center Line		324+55	325+25		140
YL Center Line		325+25	333+15		790
YL Skip Dash (10' - 30')		325+25	333+15		210
White Edge line (Lt)		324+55	333+15		860
White Edge line (Rt)		324+55	333+15		860
TOTAL					2,860

DATE	BY	SURVEYED	PLOTTED	TEMPLATE	AREAS CHECKED
FINAL SURVEY	NO.	NO.	NO.	NO.	NO.

DATE	BY	SURVEYED	PLOTTED	TEMPLATE	AREAS CHECKED
ORIGINAL SURVEY	NO.	NO.	NO.	NO.	NO.

FILE NAME = D264H21-sht-schedule.dgn
 PLOT DATE = 3/8/2013
 PLOT SCALE = 100.0000 ' / IN.



DESIGNED - M.P.
 DRAWN - K.R.K.
 CHECKED - M.P./K.R.K.
 DATE - JANUARY 2013

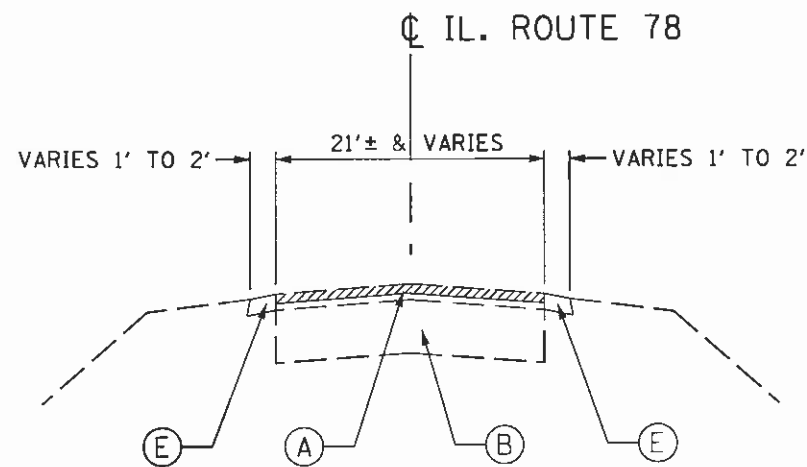
REVISED -
 REVISED -
 REVISED -
 REVISED -

**STATE OF ILLINOIS
 DEPARTMENT OF TRANSPORTATION**

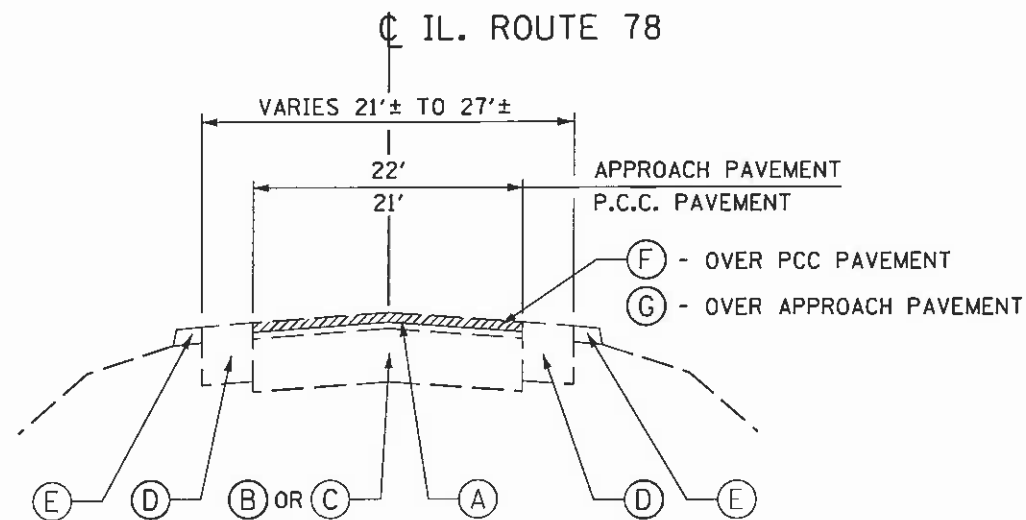
SCHEDULE OF QUANTITIES - IL 78 OVER EAST FORK PLUM RIVER

SCALE: NONE SHEET NO. 1 OF 1 SHEETS STA. TO STA.

F.A.P. RTE.	SECTION	COUNTY	TOTAL SHEETS	SHEET NO.
642	D2 DECK REPAIR 2013-4	CARROLL	25	7
			CONTRACT NO. 64J55	
ILLINOIS				



EXISTING TYPICAL SECTION
 STA. 35+80 TO STA. 327+38
 STA. 330+32 TO STA. 331+85



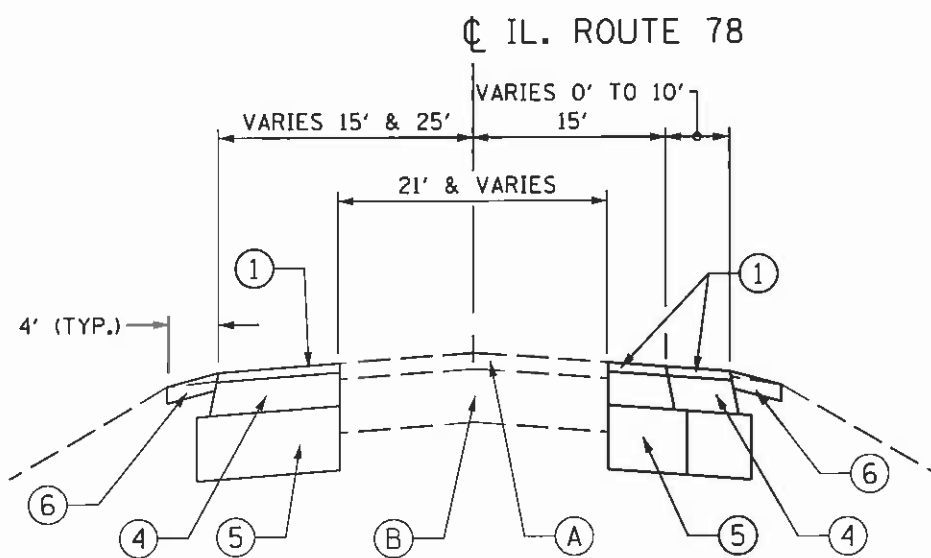
EXISTING TYPICAL SECTION
 STA. 327+38 TO STA. 328+50.66
 STA. 329+19.34 TO STA. 330+32

EXISTING LEGEND

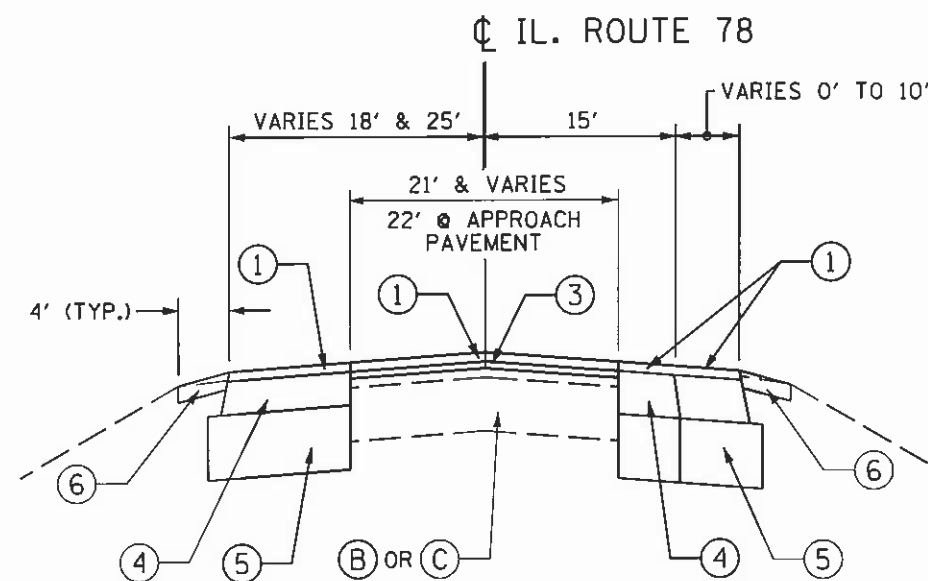
- (A) HMA OVERLAY
- (B) P.C.C. PAVEMENT
- (C) BRIDGE APPROACH PAVEMENT
- (D) HMA SHOULDER
- (E) GRAVEL SHOULDER
- (F) HMA SURFACE REMOVAL, 1 3/4"
- (G) HMA SURFACE REMOVAL, 3"

PROPOSED LEGEND

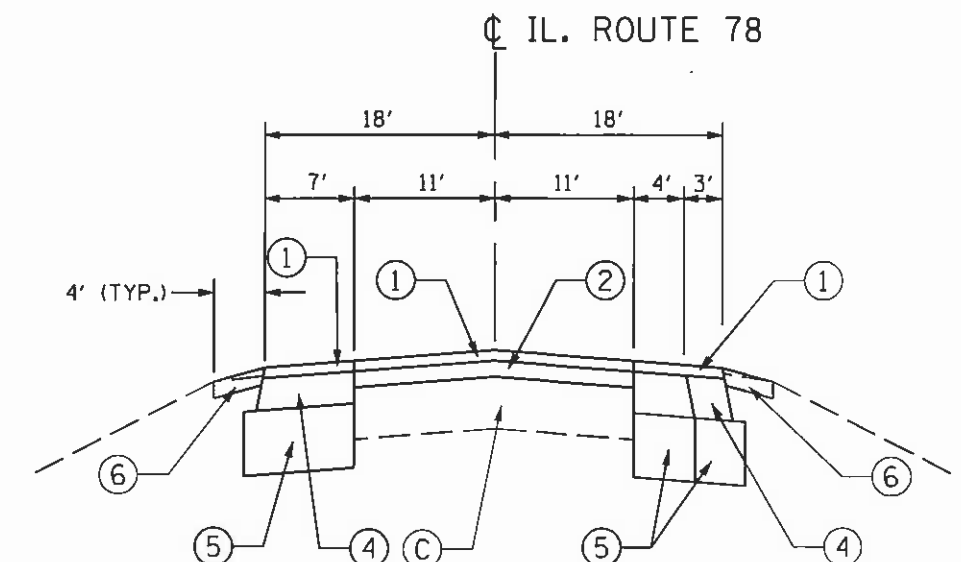
- (1) HOT-MIX ASPHALT SURFACE COURSE, MIN "C", N50, 1 3/4"
- (2) HOT MIX ASPHALT BINDER, IL-19.0, N50
- (3) LEVELING BINDER
- (4) HMA SHOULDER, 6 1/4"
- (5) SUB-BASE GRANULAR MATERIAL, TYPE A, 12"
- (6) TOPSOIL, 4" & SEEDING, CLASS 2A



PROPOSED TYPICAL SECTION
 STA. 325+80 TO STA. 327+38
 STA. 330+32 TO STA. 331+85

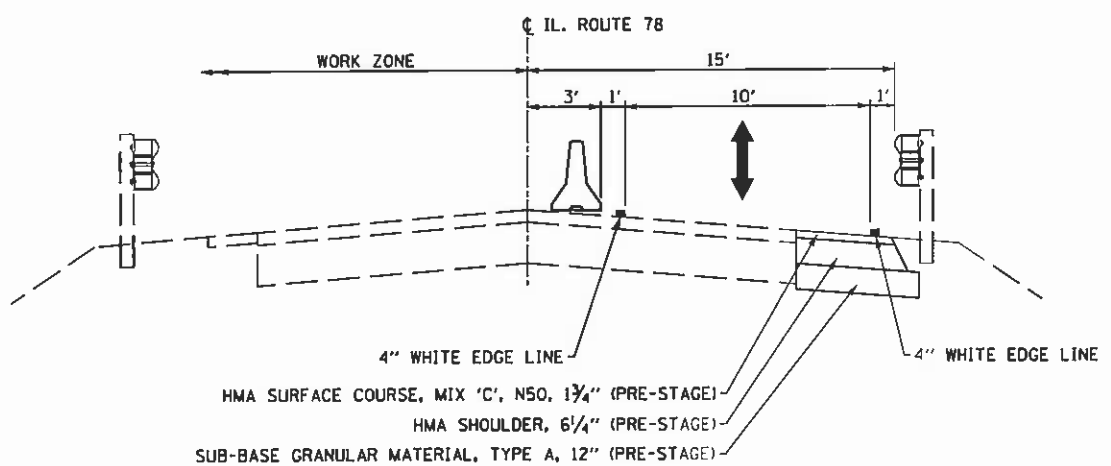
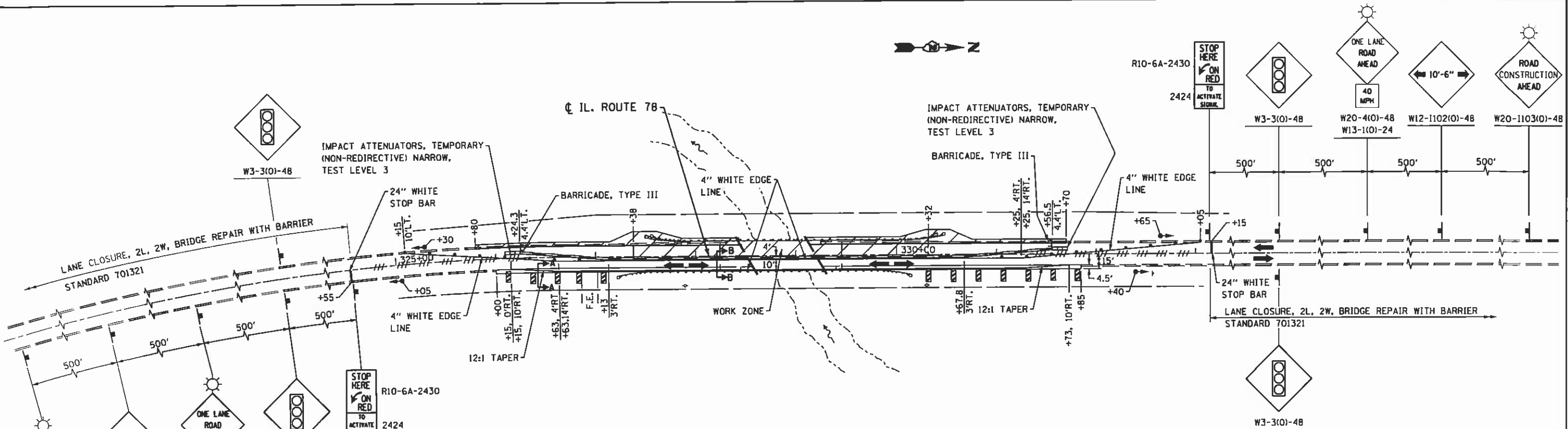


PROPOSED TYPICAL SECTION
 STA. 327+38 TO STA. 328+20
 STA. 329+50 TO STA. 330+32

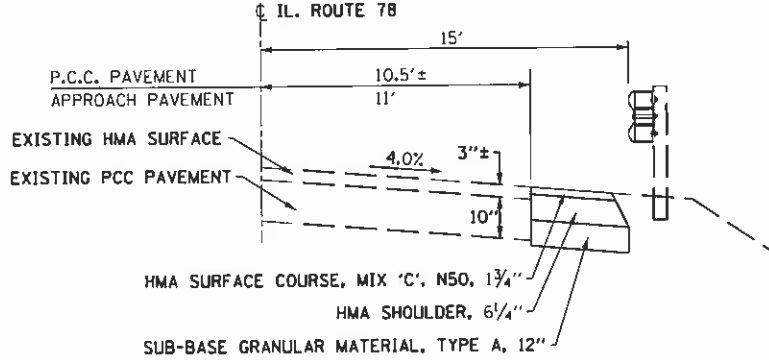
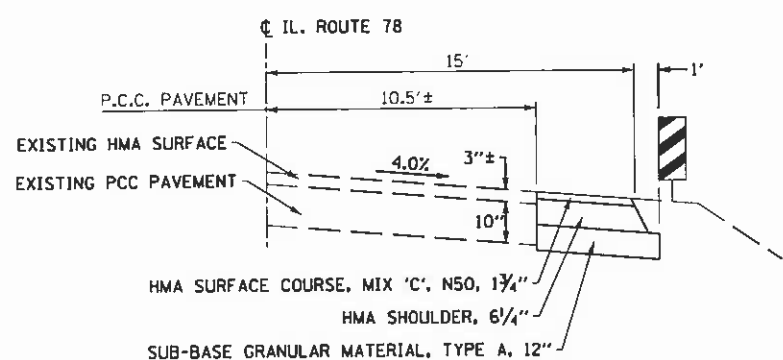


PROPOSED TYPICAL SECTION
 STA. 328+20 TO STA. 328+50.66
 STA. 329+19.34 TO STA. 329+50

NOTE:
 1. GUARDRAIL OMITTED FOR CLARITY



NOTE:
PRE-STAGE CONSTRUCTION SHALL BE CONSTRUCTED UTILIZING STD. 701326



- NOTES:
1. ALL TEMPORARY PAVEMENT MARKINGS SHALL BE PAINT.
 2. INSTALL TEMPORARY RUMBLE STRIP. SEE STD. 701321 FOR ADDITIONAL INFORMATION.
 3. BARRIER WALL OFFSETS ARE TO TRAFFIC SIDE OF BARRIER WALL
 4. PERMANENT PAVEMENT MARKINGS SHALL BE DONE IN STAGE III.

TRAFFIC CONTROL AND STAGING LEGEND

	WORK ZONE
	DIRECTION OF TRAFFIC
	TEMPORARY CONCRETE BARRIER
	TYPE III BARRICADES WITH FLASHING LIGHTS
	BARRICADES, TYPE II OR DRUMS WITH STEADY BURNING BI-DIRECTIONAL LIGHTS @ 25' c-c.
	DOUBLE VERTICAL PANELS @ 25' c-c.
	SIGN ON PORTABLE OR PERMANENT SUPPORT
	PAVEMENT MARKING REMOVAL
	TRAFFIC SIGNAL

FILE NAME: 0264J55-ah1-mot-Stage1.dgn
 USER NAME: IDOT
 PLOT SCALE: 1/8" = 1'-0"
 PLOT DATE: 3/15/2013

CHRISTIAN-RODGE & ASSOCIATES, INC.
 ENGINEERS-PLANNERS-SURVEYORS
 211 WEST WACKER DRIVE
 CHICAGO, ILLINOIS 60606
 PHONE: (312)372-2023 FAX: (312)372-5274

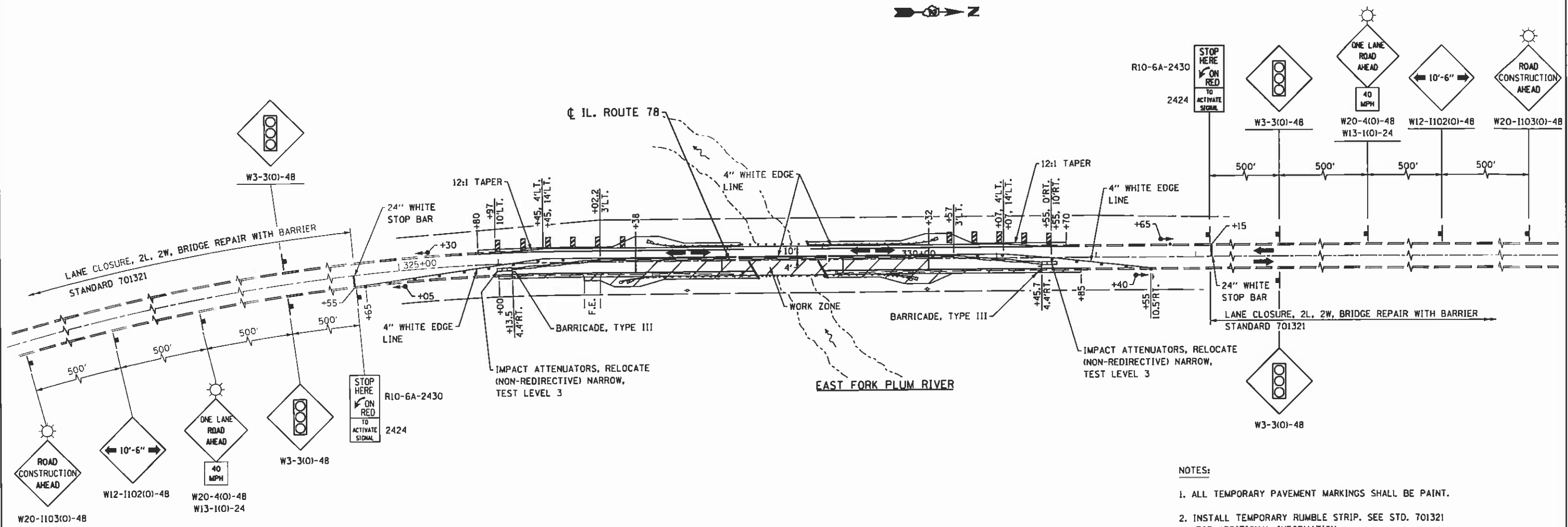
DESIGNED - M.P.	REVISED -
DRAWN - B.K.	REVISED -
CHECKED - G.F.L.	REVISED -
DATE - JANUARY, 2013	REVISED -

STATE OF ILLINOIS
 DEPARTMENT OF TRANSPORTATION

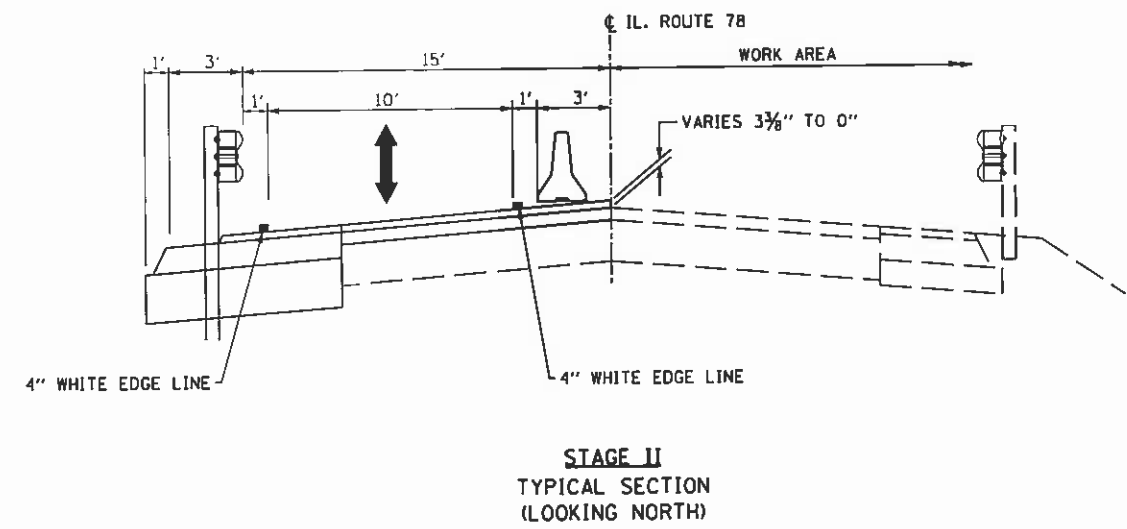
TRAFFIC CONTROL AND PROTECTION - STAGE I
 IL ROUTE 78 OVER EAST FORK PLUM RIVER

SCALE: SHEET NO. OF SHEETS STA. 30+39.41 TO STA. 34+48

F.A.I. RTE.	SECTION	COUNTY	TOTAL SHEETS	SHEET NO.
642	D2 DECK REPAIR 2013-4	CARROLL	25	9
CONTRACT NO. 64J55				
FED. ROAD DIST. NO. 1 ILLINOIS FED. AID PROJECT				



- NOTES:**
1. ALL TEMPORARY PAVEMENT MARKINGS SHALL BE PAINT.
 2. INSTALL TEMPORARY RUMBLE STRIP. SEE STD. 701321 FOR ADDITIONAL INFORMATION.
 3. BARRIER WALL OFFSETS ARE TO TRAFFIC SIDE OF BARRIER WALL.
 4. PERMANENT PAVEMENT MARKINGS SHALL BE DONE IN STAGE III.



TRAFFIC CONTROL AND STAGING LEGEND

- WORK ZONE
- DIRECTION OF TRAFFIC
- TEMPORARY CONCRETE BARRIER
- TYPE III BARRICADES WITH FLASHING LIGHTS
- BARRICADES, TYPE II OR DRUMS WITH STEADY BURNING BI-DIRECTIONAL LIGHTS @ 25' c-c.
- DOUBLE VERTICAL PANELS @ 25' c-c.
- SIGN ON PORTABLE OR PERMANENT SUPPORT
- PAVEMENT MARKING REMOVAL
- TRAFFIC SIGNAL

FILE NAME = D264J95-shl-mot-Stage2.dgn
 USER NAME = JDOT
 PLOT SCALE = 1/8" = 1'-0"
 PLOT DATE = 3/15/2013

CHRISTIAN-ROGE & ASSOCIATES, INC.
 ENGINEERS-PLANNERS-SURVEYORS
 211 WEST WACKER DRIVE
 CHICAGO, ILLINOIS 60606
 PHONE: (312)372-2023 FAX: (312)372-5274

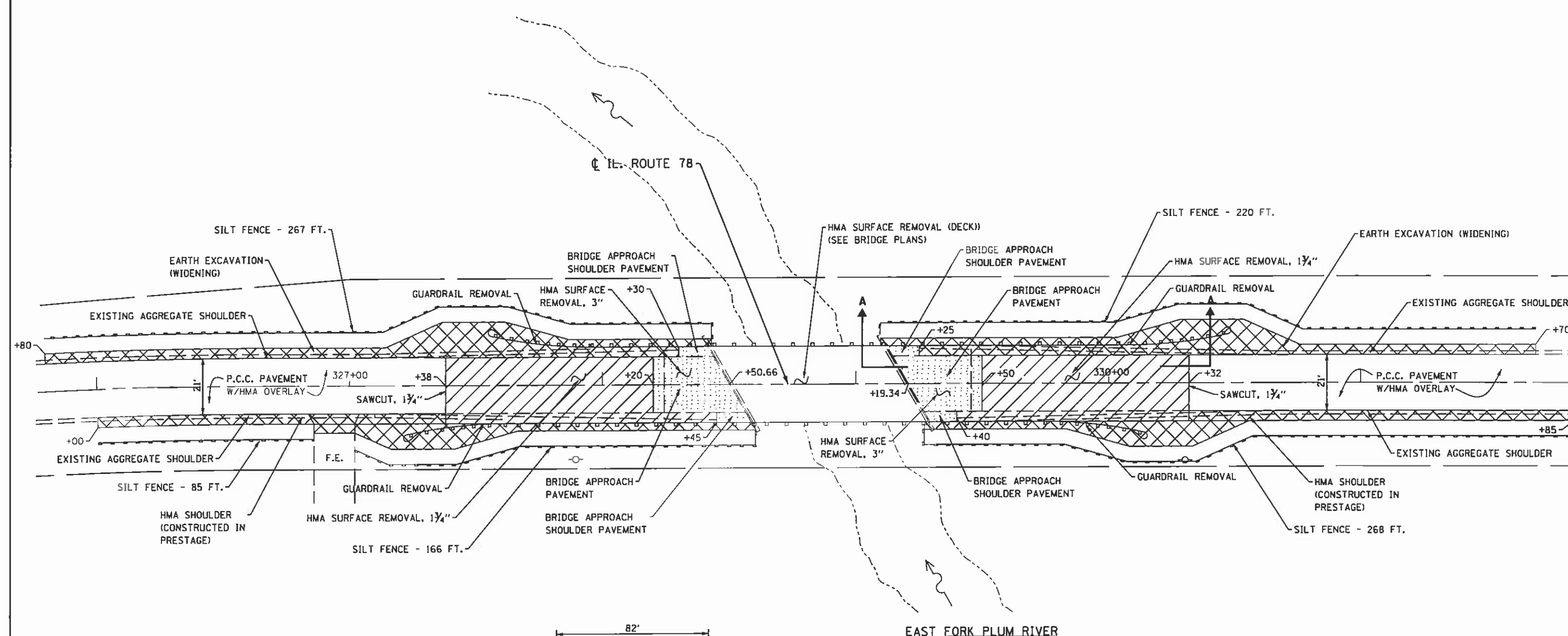
DESIGNED - M.P.	REVISED -
DRAWN - B.X.	REVISED -
CHECKED - G.F.L.	REVISED -
DATE - JANUARY, 2013	REVISED -

**STATE OF ILLINOIS
 DEPARTMENT OF TRANSPORTATION**

**TRAFFIC CONTROL AND PROTECTION - STAGE II
 IL ROUTE 78 OVER EAST FORK PLUM RIVER**

SCALE: SHEET NO. OF SHEETS STA. 30+39.41 TO STA. 34+48

F.A.I.L. R.T.E.	SECTION	COUNTY	TOTAL SHEETS	SHEET NO.
642	D2 DECK REPAIR 2013-4	CARROLL	25	10
FED. ROAD DIST. NO. 1 (ILLINOIS) FED. AID PROJECT				
CONTRACT NO. 64J55				



1. HMA SHOULDER REMOVAL SHALL BE PAID FOR AS "EARTH EXCAVATION (WIDENING)"
2. SURPLUS EXCAVATION SHALL BE DISPOSED OF ACCORDING TO ARTICLE 202.03.

FILE NAME = D264H21-sht-removalplan.dgn
 USER NAME = 100T
 PLOT SCALE = 48,0000 / IN.
 PLOT DATE = 3/8/2013

CHRISTIAN-BOGE & ASSOCIATES, INC.
 ENGINEERS-PLANNERS-SURVEYORS
 211 WEST WACKER DRIVE
 CHICAGO, ILLINOIS 60601
 PHONE: (312)372-2023 FAX: (312)372-5274

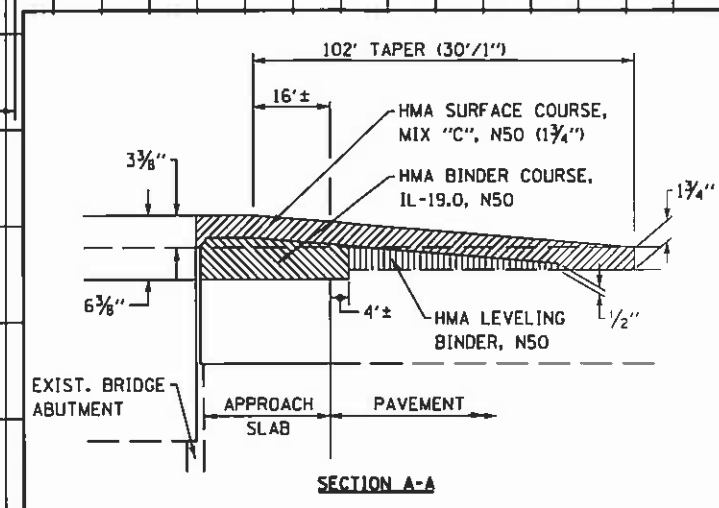
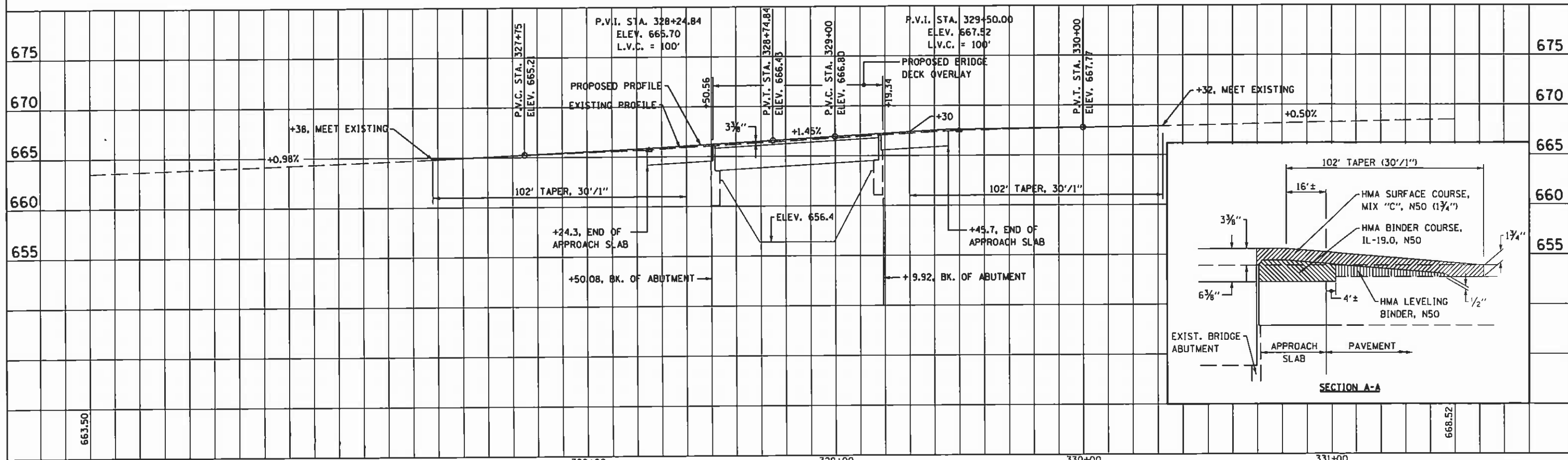
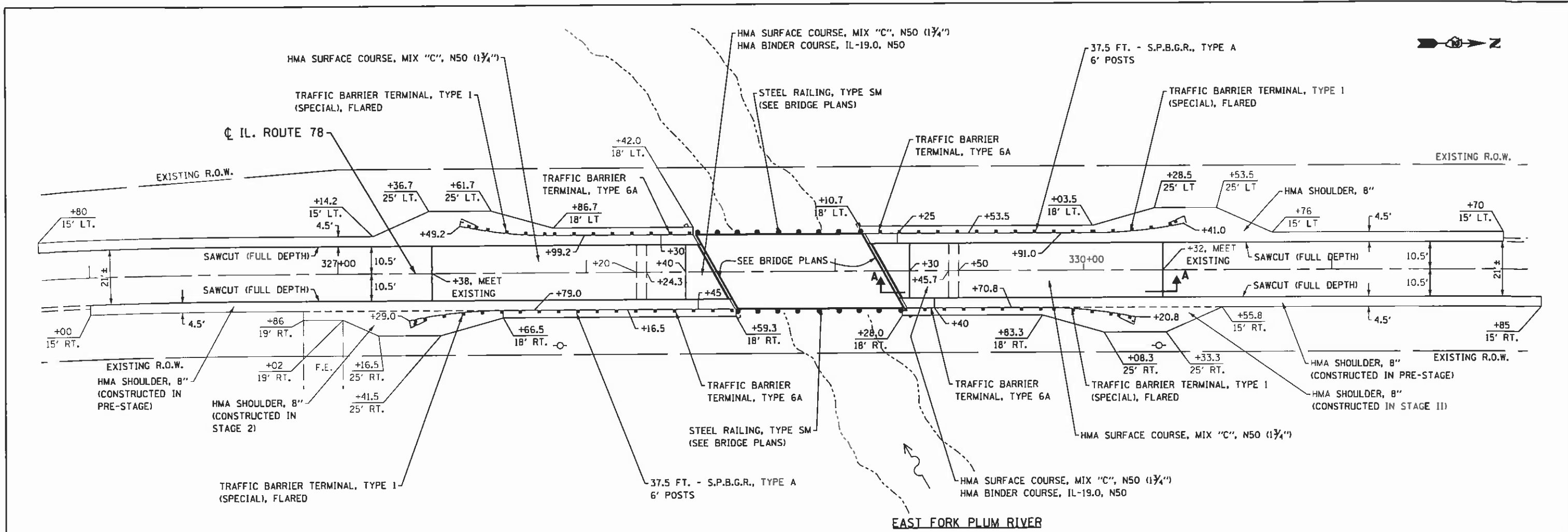
DESIGNED - M.P.	REVISED -
DRAWN - B.K.	REVISED -
CHECKED - G.F.L.	REVISED -
DATE - JANUARY, 2013	REVISED -

**STATE OF ILLINOIS
 DEPARTMENT OF TRANSPORTATION**

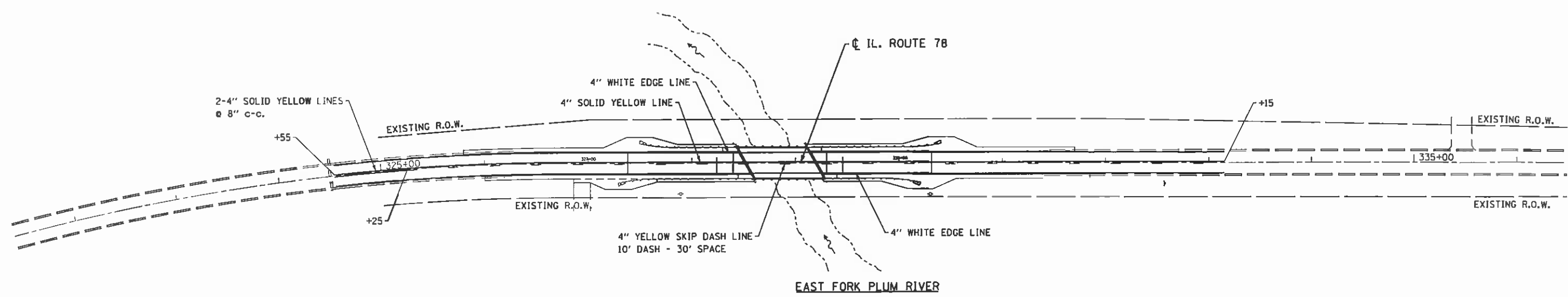
**REMOVAL & EROSION CONTROL PLAN
 IL RTE. 78 OVER EAST FORK PLUM RIVER**

SCALE: 1" = 20' SHEET NO. OF SHEETS STA. 30+39.41 TO STA. 34+48

F.A.U. RTE.	SECTION	COUNTY	TOTAL SHEETS	SHEET NO.
642	D2 DECK REPAIR 2013-4	CARROLL	25	11
FED. ROAD DIST. NO. 1 ILLINOIS FED. AID PROJECT				



FILE NAME = D264H21-ah-1-plan&profile.dgn	DESIGNED - M.P.	REVISED -	STATE OF ILLINOIS DEPARTMENT OF TRANSPORTATION	F.A.U. RTE. 642	SECTION D2 DECK REPAIR 2013-4	COUNTY CARROLL	TOTAL SHEETS 25	SHEET NO. 12	
USER NAME = 1001	DRAWN - B.K.	REVISED -		SCALE: 1" = 20'	SHEET NO. OF SHEETS	STA. 30+39.41	TO STA. 34+48	FED. ROAD DIST. NO. 1 ILLINOIS FED. AID PROJECT	CONTRACT NO. 64J55
PLOT SCALE = 48.8888 / 144	CHECKED - G.F.L.	REVISED -							
PLOT DATE = 3/8/2013	DATE - JANUARY, 2013	REVISED -							



NOTE:
ALL PAVEMENT MARKINGS SHALL BE EPOXY.

FILE NAME = 026421-ah1-pavtmk.dgn
USER NAME = 1007
PLOT SCALE = 100.0000 "/ IN.
PLOT DATE = 1/8/2013

CHRISTIAN-ROGE & ASSOCIATES, INC.
ENGINEERS-PLANNERS-SURVEYORS
211 WEST WACKER DRIVE
CHICAGO, ILLINOIS 60606
PHONE: (312)372-2023 FAX: (312)372-5274

DESIGNED - M.P.	REVISED -
DRAWN - B.K.	REVISED -
CHECKED - G.F.L.	REVISED -
DATE - JANUARY, 2013	REVISED -

**STATE OF ILLINOIS
DEPARTMENT OF TRANSPORTATION**

**PAVEMENT MARKING PLAN
IL. RTE. 78 OVER EAST FORK PLUM RIVER**

SCALE: 1" = 50' SHEET NO. OF SHEETS STA. 30+39.41 TO STA. 34+48

F.A.U. RTE.	SECTION	COUNTY	TOTAL SHEETS	SHEET NO.
642	D2 DECK REPAIR 2013-4	CARROLL	25	13
FED. ROAD DIST. NO. 1				ILLINOIS FED. AID PROJECT
CONTRACT NO. 64J55				

BENCH MARK:
Painted & chiseled mark X top of North end east guardrail, 18' Rt., Sta. 329+37, Elev. 670.48

Existing Structure: S.N. 008-0010 was built by County, Sta. 328+95 in approx. 1925 as S.B.I. Rte. 40, Section II B, one span, with reinforced concrete through girders, 53'-1/2" back to back abutments and 22'-4" in to in guard rails. Traffic will be maintained utilizing Stage Construction. Salvage - None

SCOPE OF WORK:

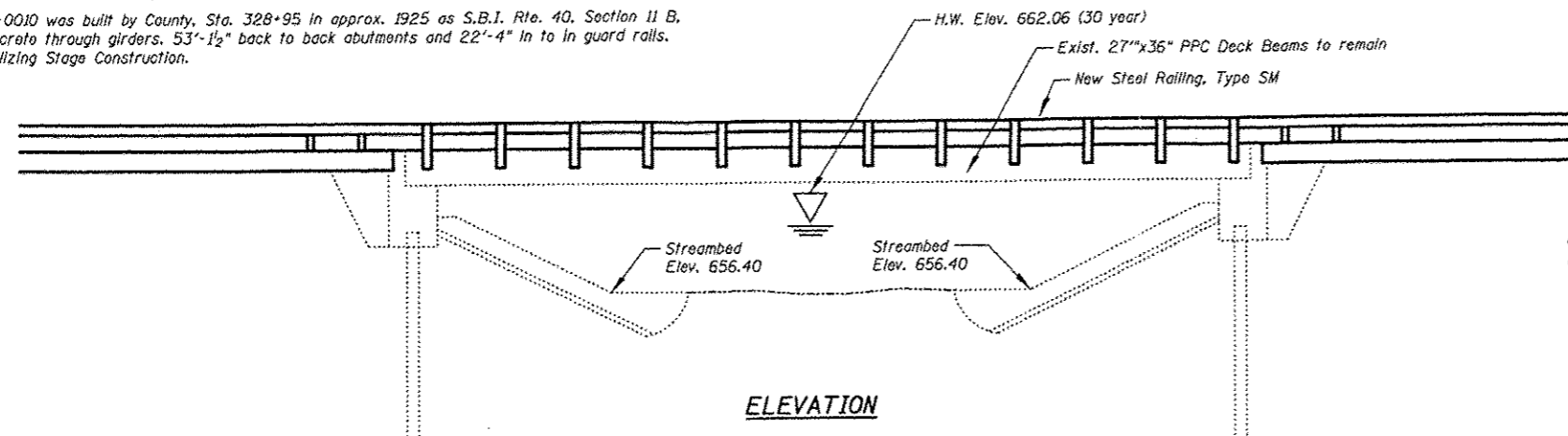
1. Remove existing 3" Bituminous Concrete Surface Course, Mix I & Waterproofing Membrane System.
2. Install Concrete Wearing Surface, 5"
3. Remove existing Steel Railing.
4. Install new Steel railing, Type SM

INDEX OF SHEETS

- S1 GENERAL PLAN & ELEVATION
- S2 CONSTRUCTION STAGING
- S3 TEMPORARY CONCRETE BARRIER FOR STAGE CONSTRUCTION
- S4 REINFORCEMENT PLAN
- S5 ABUTMENT DETAILS
- S6 STEEL RAILING, TYPE SM WITH CONCRETE WEARING SURFACE
- S7 BAR SPLICER ASSEMBLY DETAILS

GENERAL NOTES

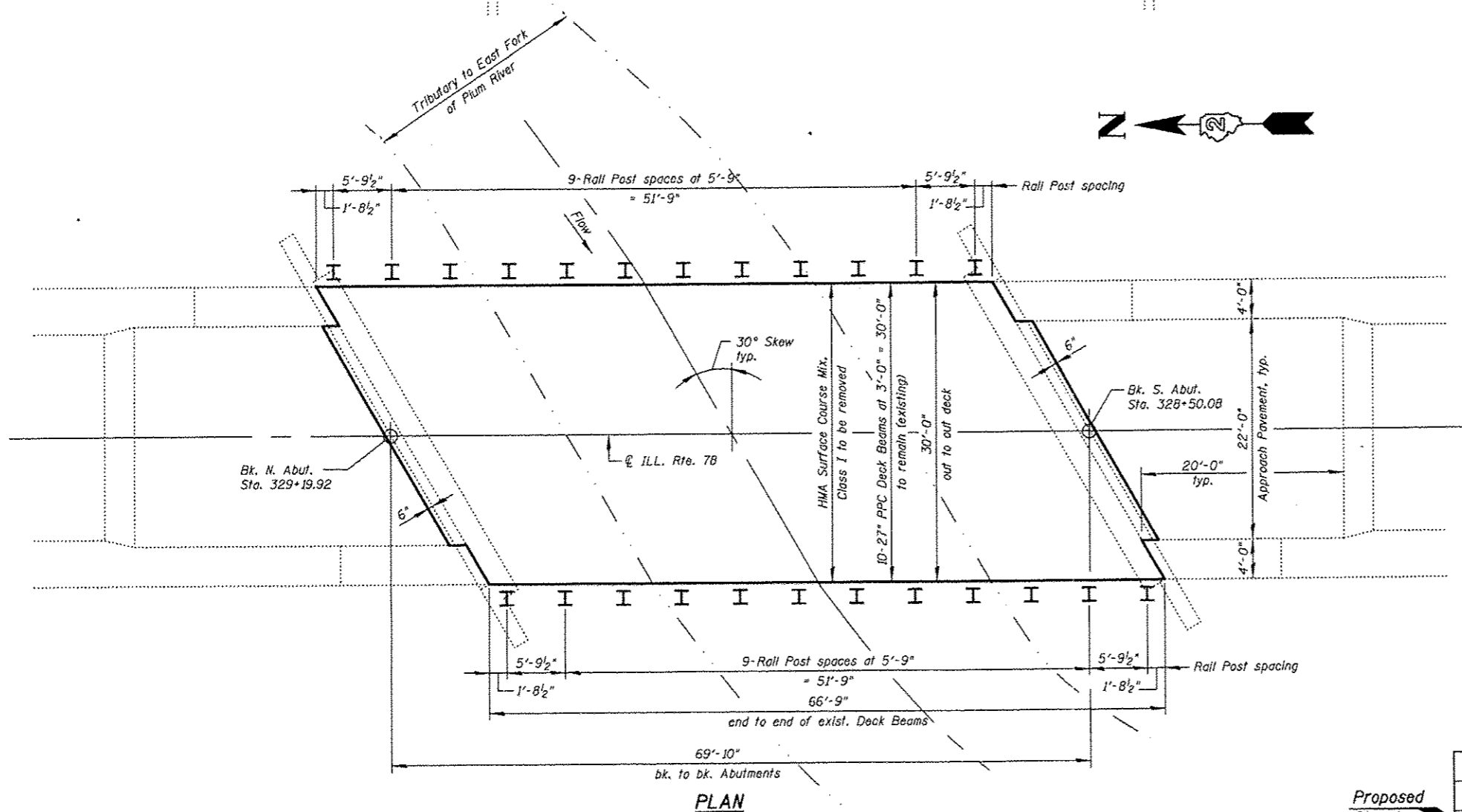
The minimum thickness of the Concrete Overlay shall be 5" & varies as required to adjust the new Profile Grade and Beam Camber.
Stream work is not allowed on this project.



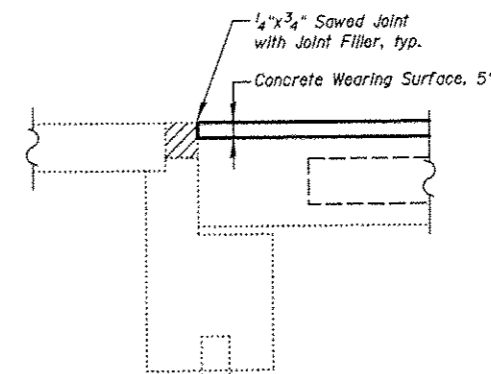
ELEVATION

TOTAL BILL OF MATERIAL

DESCRIPTION	UNIT	SUPER.	SUB.	TOTAL
Concrete Structures	Cu Yd	-	4.7	4.7
Bridge Deck Grooving	Sq Yd	208	-	208
Reinforcement Bars, Epoxy Coated	Pound	4,970	920	5,890
Bar Splacers	Each	70	12	82
Steel Railing, Type SM	Foot	134	-	134
Bridge Rail Removal	Foot	134	-	134
Concrete Wearing Surface, 5"	Sq Yd	223	-	223
Hot-Mix Asphalt Surface Removal (Deck)	Sq Yd	233	-	233
Concrete Removal	Cu Yd	-	4.0	4.0



PLAN

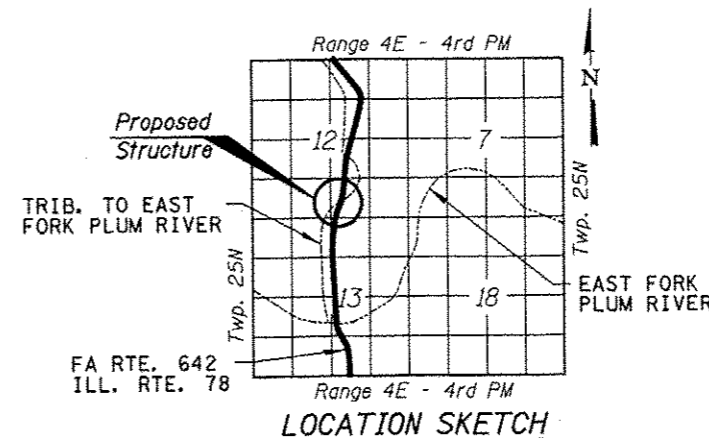


SECTION THRU ABUTMENTS



Bhadrish N. Shah
BHADRISH N. SHAH MARCH 08, 2013
LICENSED STRUCTURAL ENGINEER
STATE OF ILLINOIS LIC. No. 081-004476
EXPIRES: 11-30-14

GENERAL PLAN & ELEVATION
F.A.P. RTE. 642, ILL. RTE. 78 OVER
A TRIBUTARY TO THE EAST FORK
OF THE PLUM RIVER
SEC. D2 DECK REPAIR 2013-4
COUNTY: CARROLL
STATION 328+85.00
STRUCTURE NO. 008-0035



LOCATION SKETCH

DESIGN SPECIFICATIONS

2002 AASHTO Standard Specifications

DESIGN STRESSES

$f'_c = 5,000 \text{ psi}$
 $f_y = 60,000 \text{ psi (Reinforcement)}$

LOADING HS20-44

No allowance for future Wearing Surface

STATE OF ILLINOIS
DEPARTMENT OF TRANSPORTATION

SHEET NO. S1 OF S7 SHEETS

F.A.P. RTE.	SECTION	COUNTY	TOTAL SHEETS	SHEET NO.
642	D2 DECK REPAIR 2013-4	CARROLL	25	14

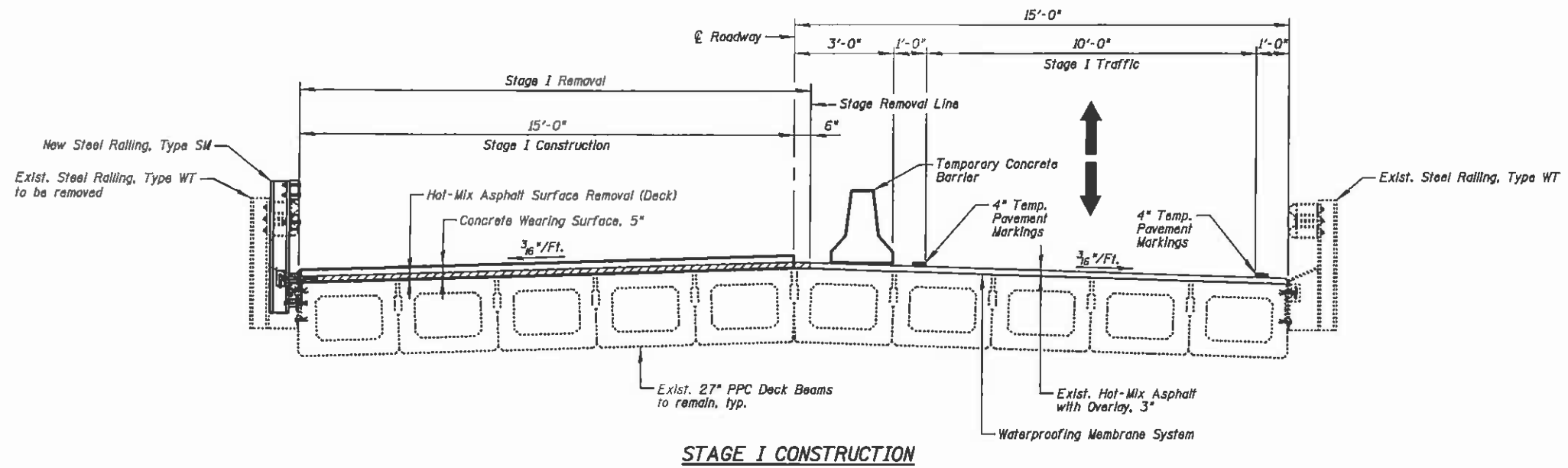
CONTRACT NO. 64J55
ILLINOIS FED. AID PROJECT

FILE NAME = I:\102709_Plum_River\Structural\CADD_Sheets\0264J55-01-01.dgn

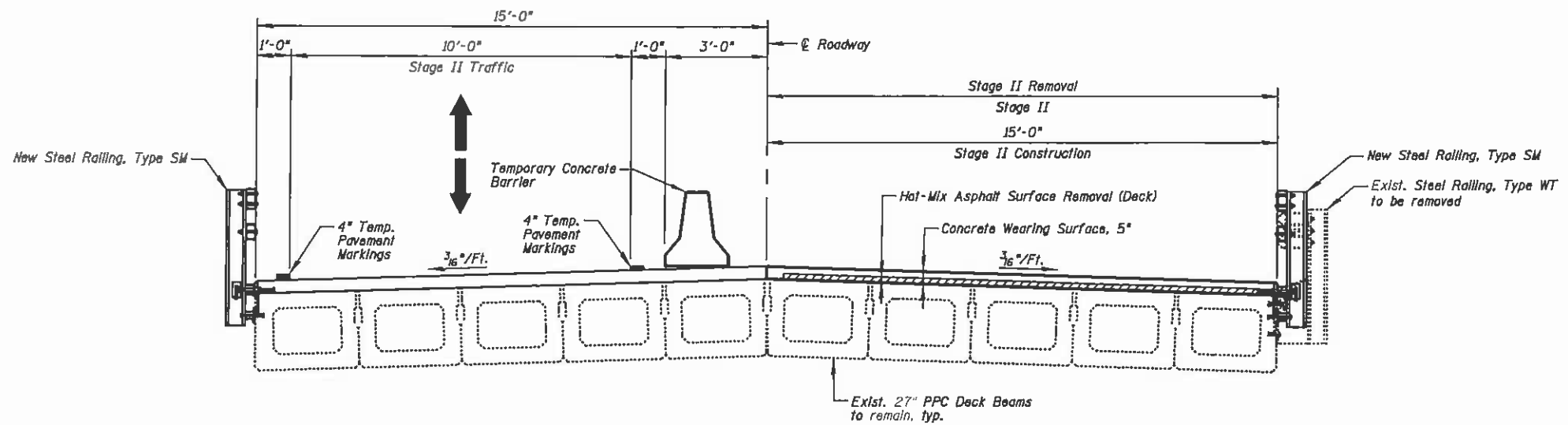
CHRISTIAN-ROGE & ASSOCIATES, INC.

USER NAME	DESIGNED	REVISIONS
100T	B.N.S./J.W./H.S.J.	-
	B.N.S./H.S.J./J.W.	-
	F.M.	-
	MARCH, 2013	-

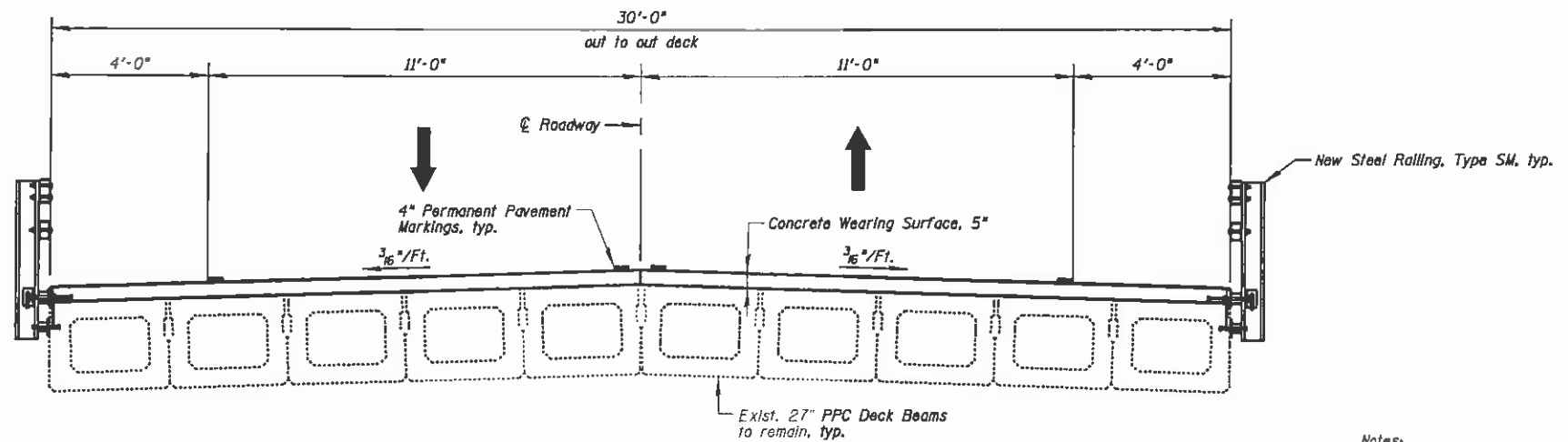
PLOT SCALE = 5/8" = 1' IN.
PLOT DATE = 3/6/2013



STAGE I CONSTRUCTION



STAGE II CONSTRUCTION



DECK CROSS SECTION

Notes:
 All staging cross sections are looking North.
 For quantity of Temporary Concrete Barrier, see Roadway Plans.

FILE NAME = I:\10276_Plum_River_Structural\CADD Sheets\0264J55-02-staging.dgn

CHRISTIAN-ROGE & ASSOCIATES, INC.

USER NAME = IDOT	DESIGNED - B.N.S./J.W./H.S.J.	REVISED -
PLLOT SCALE = 50,000' / 1" IN.	CHECKED - B.N.S./H.S.J./J.W.	REVISED -
PLLOT DATE = 3/7/2013	DRAWN - F.M.	REVISED -
	DATE - MARCH, 2013	REVISED -

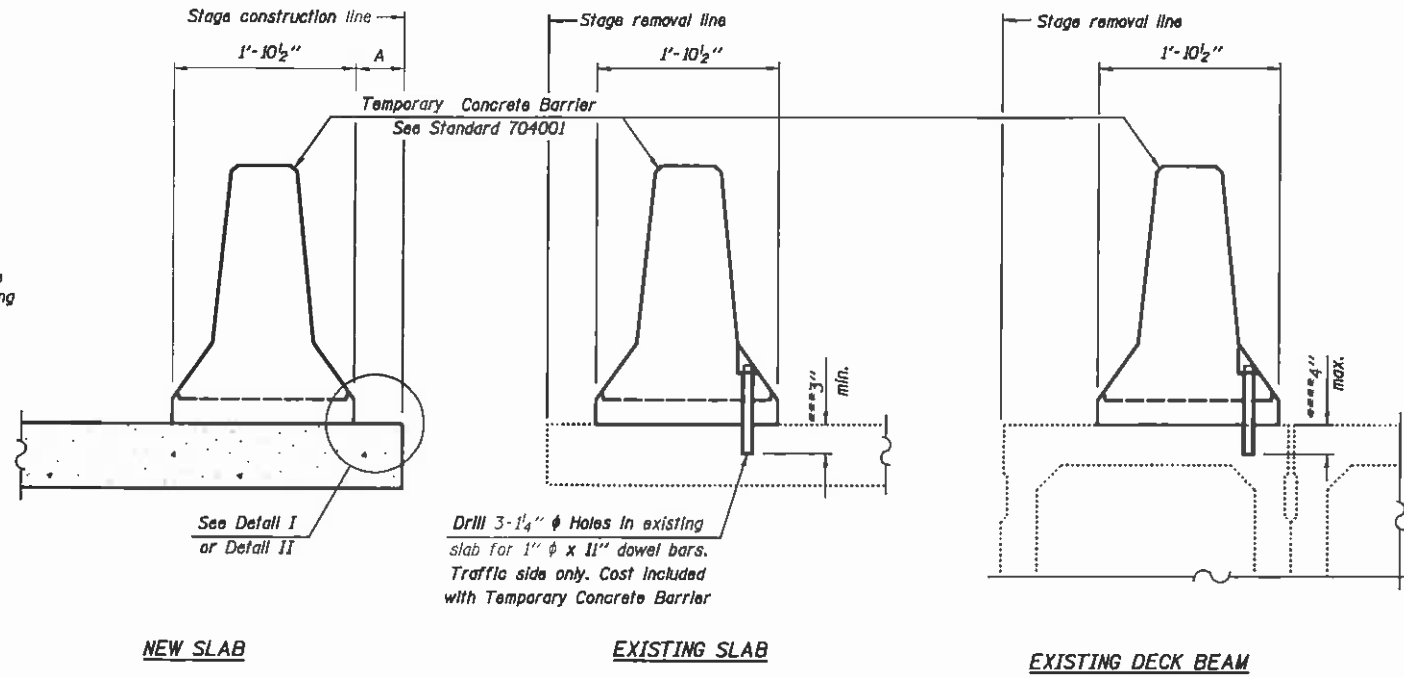
**STATE OF ILLINOIS
 DEPARTMENT OF TRANSPORTATION**

**CONSTRUCTION STAGING
 STRUCTURE NO. 008-0035**

SHEET NO. S2 OF S7 SHEETS

F.A.P. RTE.	SECTION	COUNTY	TOTAL SHEETS	SHEET NO.
642	D2 DECK REPAIR 2013-4	CARROLL	25	15
CONTRACT NO. 64J55			ILLINOIS FED. AID PROJECT	

When "A" is 3'-6" or less, the temporary concrete barrier shall be anchored to the new slab according to Detail I or Detail II. No anchorage is required when "A" is greater than 3'-6"

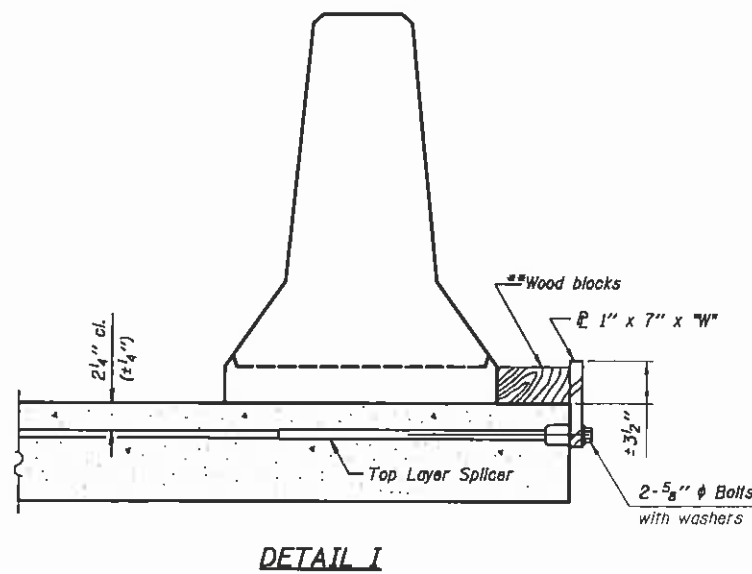


Drill 3-1/4" ϕ Holes in existing slab for 1" ϕ x 11" dowel bars. Traffic side only. Cost included with Temporary Concrete Barrier

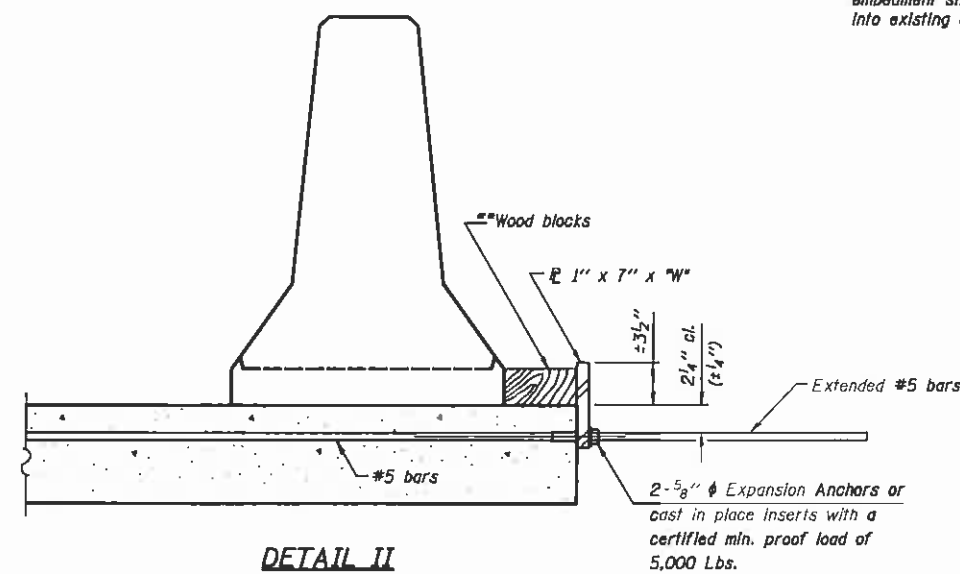
NOTES
 Detail I - With Bar Splicer or Couplers: Connect one (1) 1" x 7" x "W" steel ϕ to the top layer of couplers with 2-5/8" ϕ bolts screwed to coupler at approximate ϕ of each barrier panel.
 Detail II - With Extended Reinforcement Bars: Connect one (1) 1" x 7" x "W" steel ϕ to the concrete slab or concrete wearing surface with 2-5/8" ϕ Expansion Anchors or cast in place Inserts spaced between the top layer of reinforcement at approximate ϕ of each barrier panel.
 Cost of anchorage is included with Temporary Concrete Barrier. The 1" x 7" x "W" plate shall not be removed until stage II construction forms and all reinforcement bars are in place and the concrete is ready to be placed.

SECTIONS THRU SLAB OR DECK BEAM

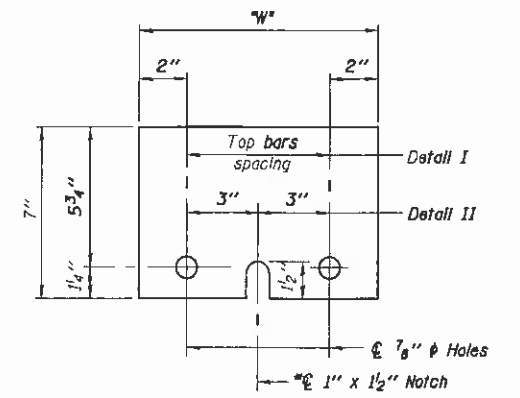
*** Dimension shown is minimum required embedment into concrete. If hot-mix asphalt wearing surface is present, minimum embedment shall be in addition to wearing surface depth.
 **** If existing deck beam is to remain in place after stage construction, embedment shall only be into wearing surface and not into existing deck beam concrete.



DETAIL I



DETAIL II



STEEL RETAINER P 1" x 7" x "W"

* Required only with Detail II

** Wood blocks may be omitted when required to provide minimum stage traffic lane width. When the wood blocks are omitted, the concrete barrier shall be in direct contact with the steel retainer plate.

"W" = Top bars spacing + 4"

R-27 7-1-10

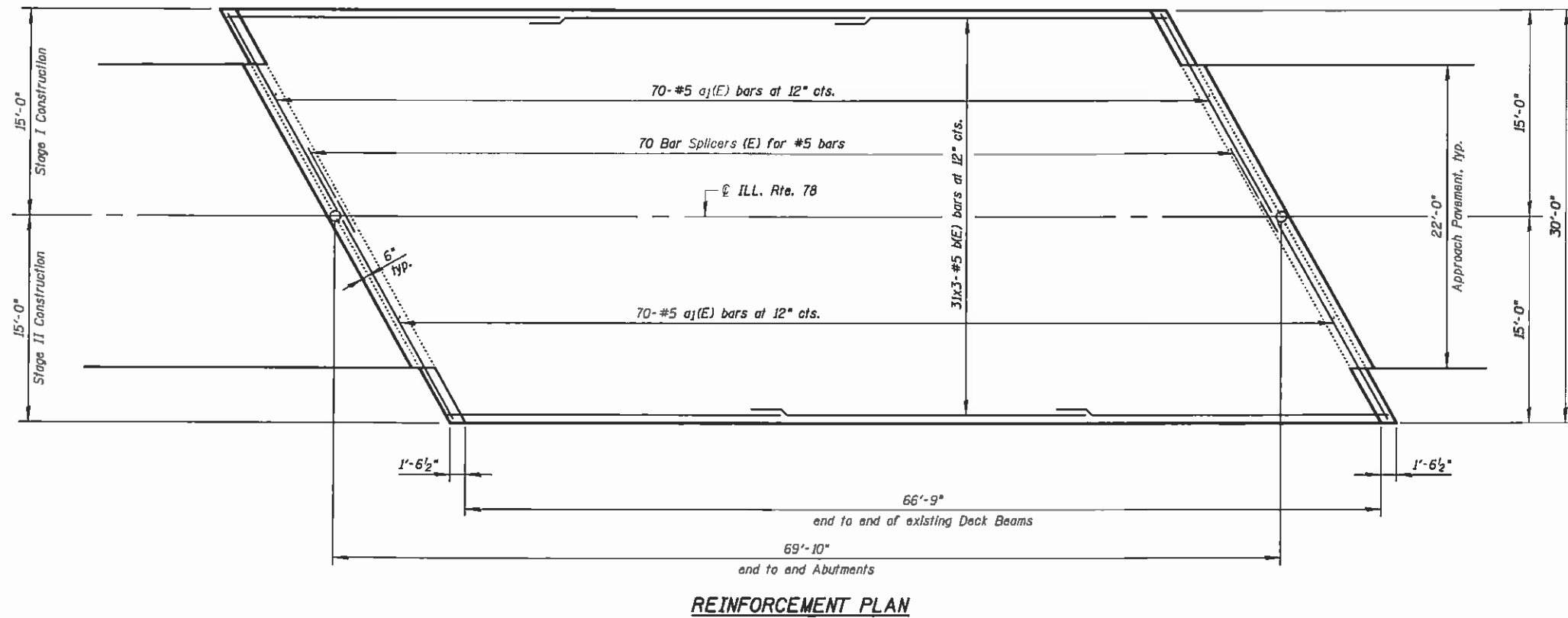
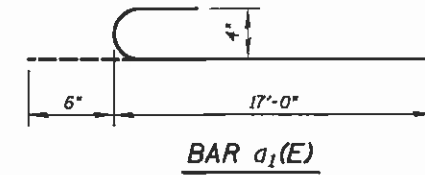
FILE NAME = I:\02709_Plum River\Structural\CA00 Sheets\0264-J55-03-conc-barrier.dgn

	USER NAME = 1007	DESIGNED - B.N.S./J.W./H.S.J.	REVISED -	STATE OF ILLINOIS DEPARTMENT OF TRANSPORTATION	TEMPORARY CONCRETE BARRIER FOR STAGE CONSTRUCTION STRUCTURE NO. 008-0035	F.A.P. RTE.	SECTION	COUNTY	TOTAL SHEETS	SHEET NO.
	PLOT SCALE = 5/8" = 1' / DL	CHECKED - B.N.S./H.S.J./J.W.	REVISED -			642	D2 DECK REPAIR 2013-4	CARROLL	25	16
	PLDT DATE = 3/7/2013	DATE - MARCH, 2013	REVISED -			CONTRACT NO. 64J55				
						SHEET NO. S3 OF 57 SHEETS		ILLINOIS FED. AID PROJECT		

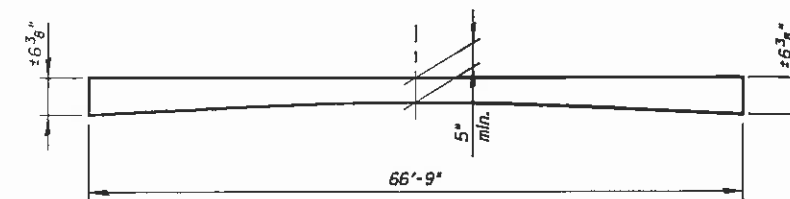
BILL OF MATERIAL

Bar	No.	Size	Length	Shape
a ₁ (E)	140	#5	17'-6"	C
b(E)	93	#5	24'-11"	—
Concrete Wearing Surface, 5"		Sq Yd	223	
Reinforcement Bars, Epoxy Coated		Pound	4,970	
Bar Splicers		Each	70	

Bars indicated thus 31x3-#5 etc., indicates 31 lines of bars with 3 lengths per line



MIN. BAR LAP:
#5 bars = 2'-7"



REINFORCED CONCRETE WEARING SURFACE PROFILE
(Proposed)

FILE NAME = I:\02709_Plum River\Structural\CADD Sheets\0264J55-04-reinf-plan.dgn

CHRISTIAN-ROGE & ASSOCIATES, INC.

USER NAME = IDDT	DESIGNED - B.N.S./J.W./H.S.J.	REVISED -
PLOT SCALE = 50,0001' / 1"	CHECKED - B.N.S./H.S.J./J.W.	REVISED -
PLOT DATE = 3/7/2013	DRAWN - F.M.	REVISED -
	DATE - MARCH, 2013	REVISED -

**STATE OF ILLINOIS
DEPARTMENT OF TRANSPORTATION**

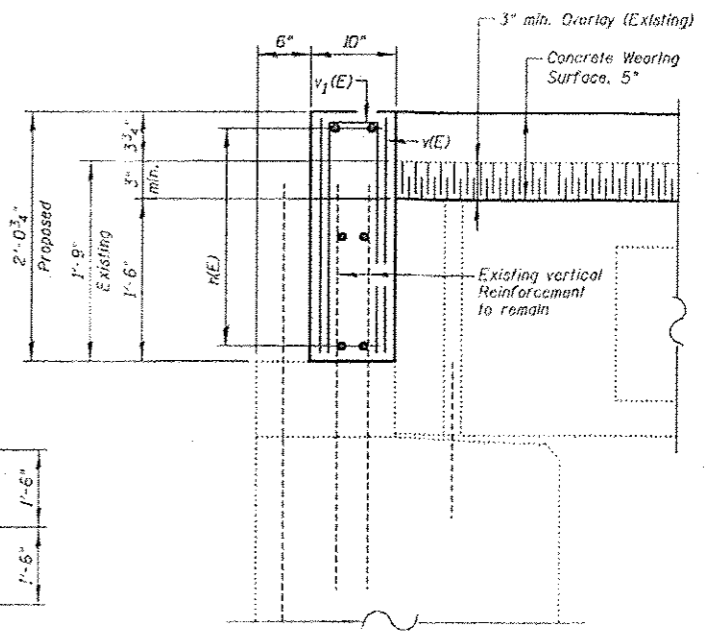
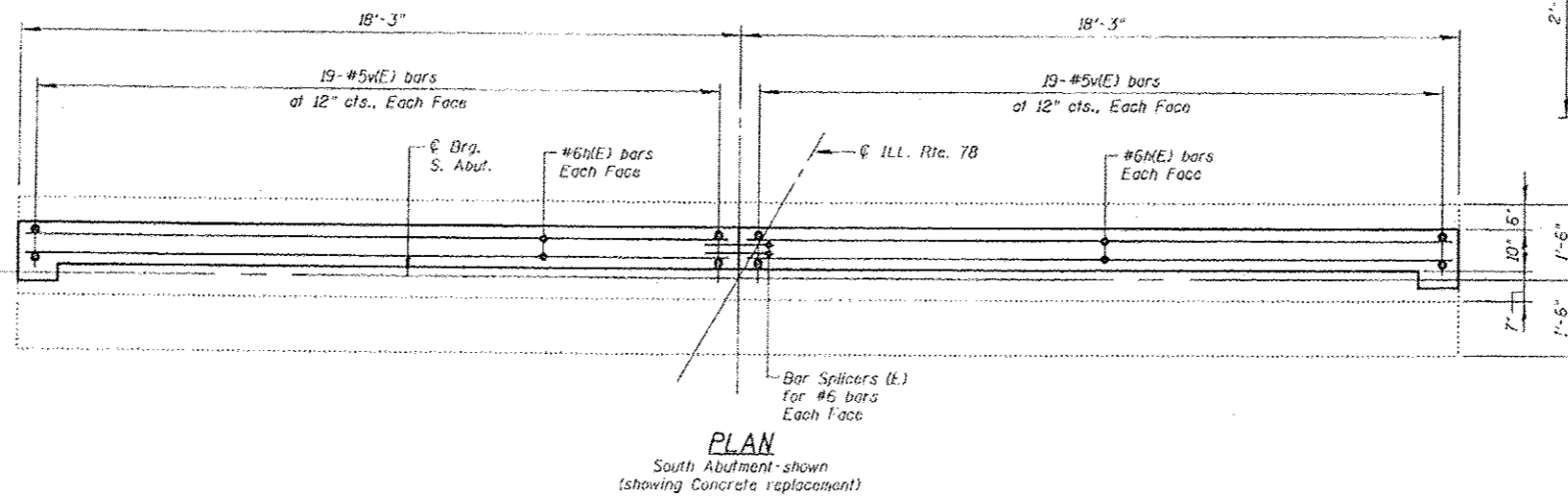
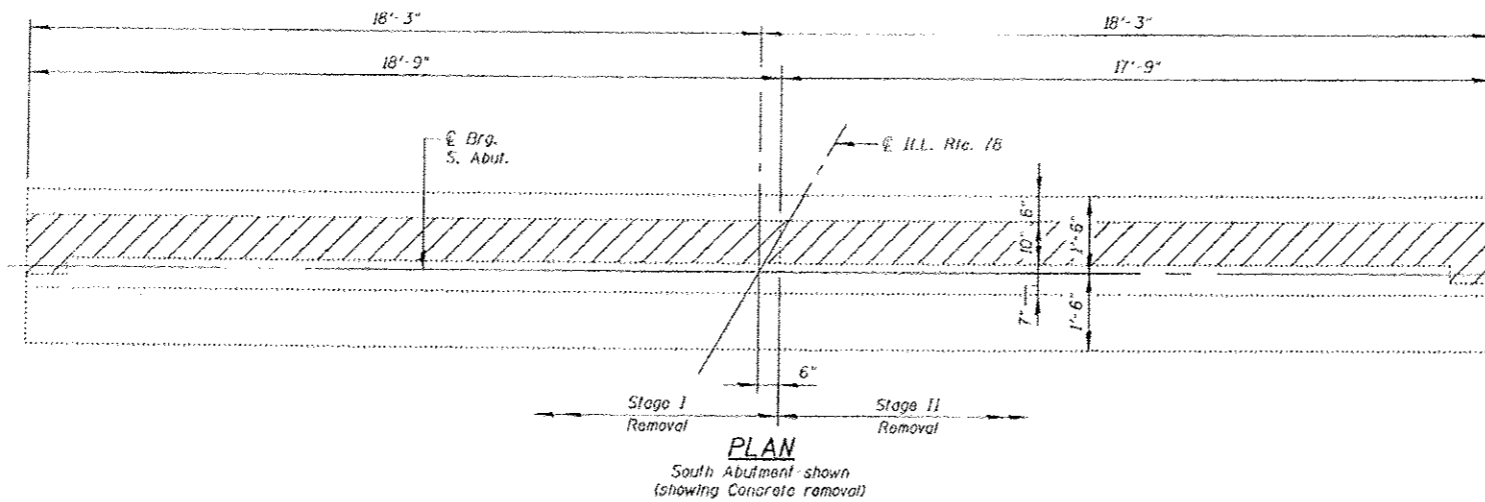
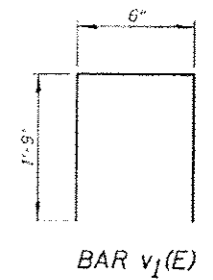
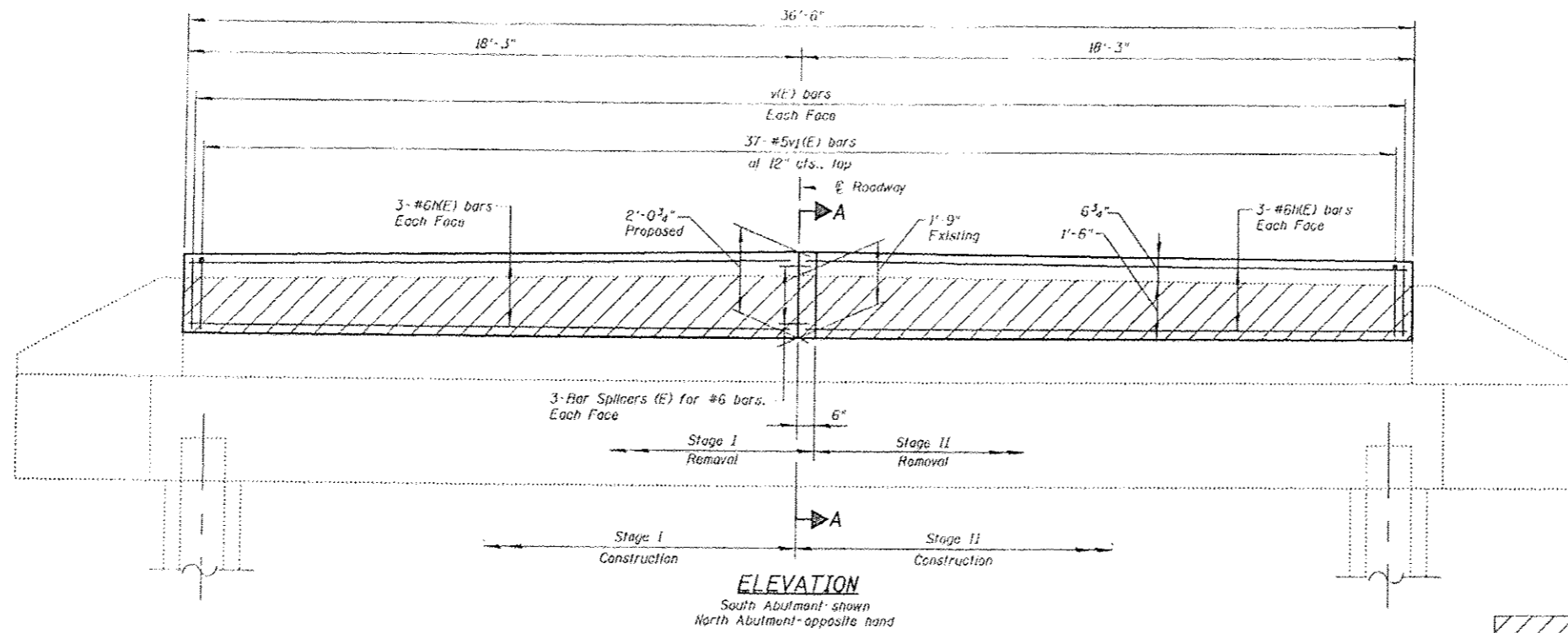
**REINFORCEMENT PLAN
STRUCTURE NO. 008-0035**

SHEET NO. 54 OF 57 SHEETS

F.A.P. RTE.	SECTION	COUNTY	TOTAL SHEETS	SHEET NO.
642	D2 DECK REPAIR 2013-4	CARROLL	25	17
CONTRACT NO. 64J55			ILLINOIS FED. AID PROJECT	

**BILL OF MATERIAL
(TWO ABUTMENTS)**

Bar	No.	Size	Length	Shape
v(E)	24	#6	18'-0"	—
v(E)	152	#5	1'-9"	—
vj(E)	74	#4	4'-0"	□
Concrete Structures			Cu Yd	4.7
Reinforcement Bars, Epoxy Coated			Pound	920
Concrete Removal			Cu Yd	4.0



FILE NAME = I:\102709_Plan River\Structural\CADD Shueta\264355-05-abut_details.dgn

CHRISTIAN-ROGE & ASSOCIATES, INC.

USER NAME = IDOT
 PLOT SCALE = 50,000' = 1" HL
 PLOT DATE = 5/8/2013

DESIGNED - B.M.S./J.W./H.S.J.
 CHECKED - B.N.S./H.S.J./J.W.
 DRAWN - F.M.
 DATE - MARCH, 2013

REVISED -
 REVISED -
 REVISED -
 REVISED -

**STATE OF ILLINOIS
 DEPARTMENT OF TRANSPORTATION**

**ABUTMENT DETAILS
 STRUCTURE NO. 008-0035**

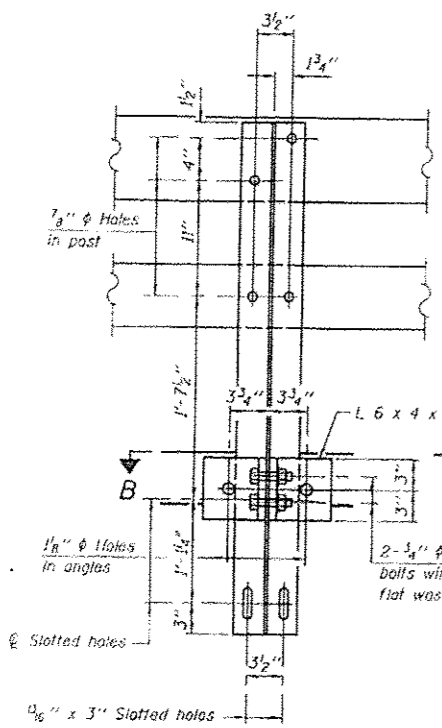
SHEET NO. 55 OF 57 SHEETS

F.A.P. RTE.	SECTION	COUNTY	TOTAL SHEETS	SHEET NO.
642	D2 DECK REPAIR 2013-4	CARROLL	25	18

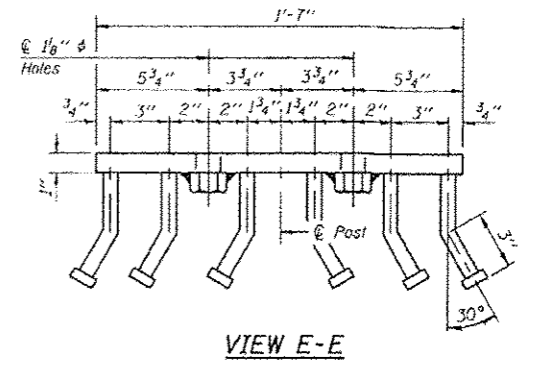
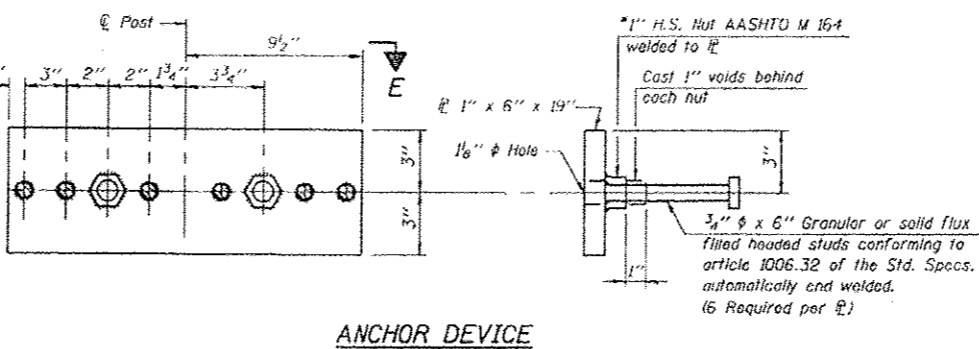
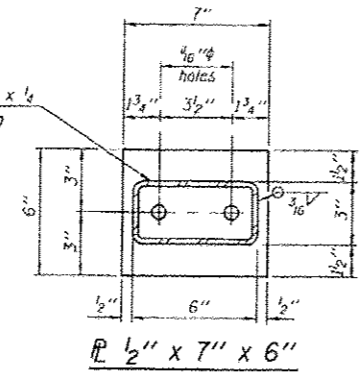
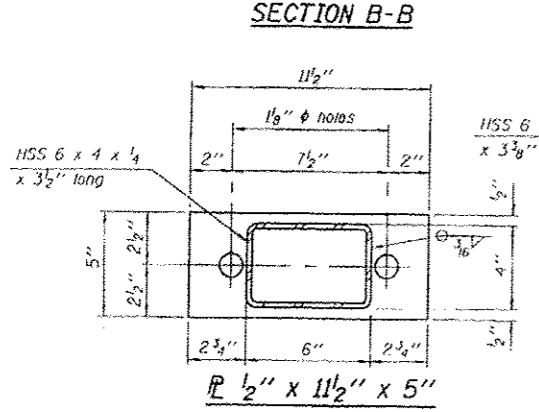
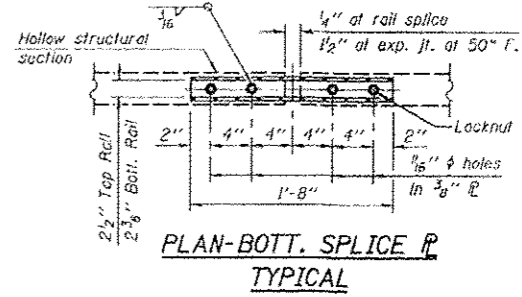
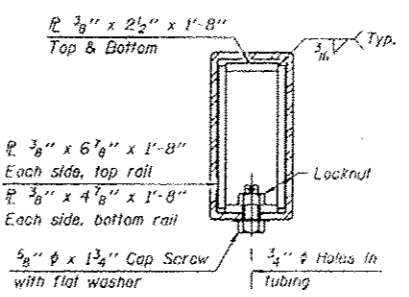
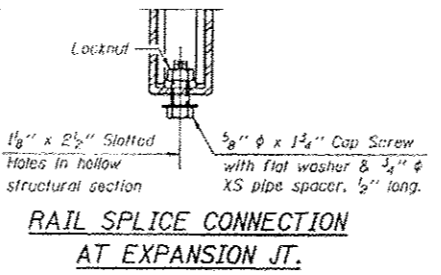
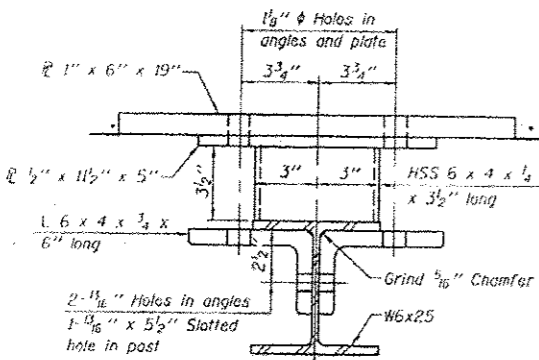
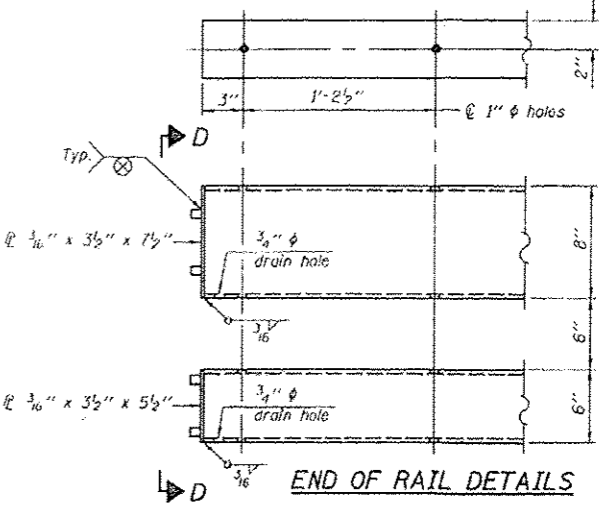
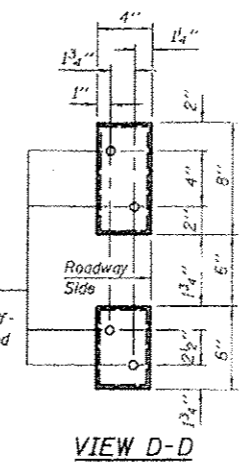
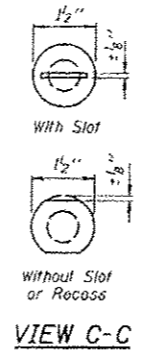
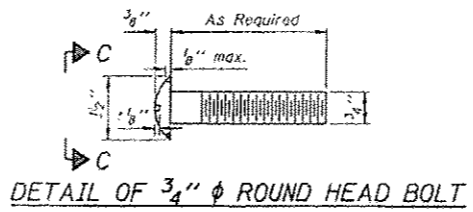
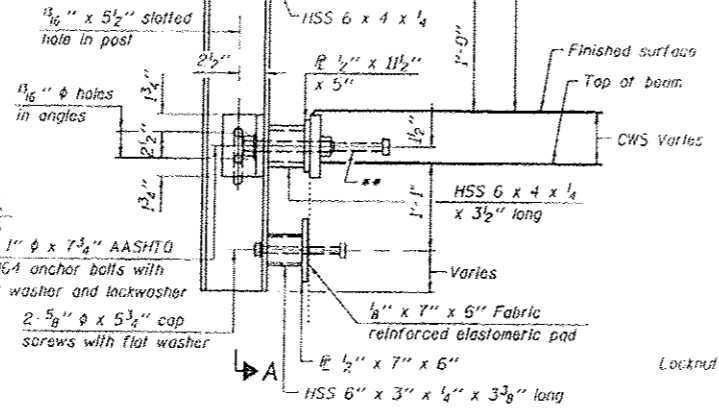
CONTRACT NO. 64J55

ILLINOIS FED. AID PROJECT

FILE NAME = J:\102769_Plum River\Structural\CADD Sheets\264-ISE-05-reiling.steel.dgn



4- $\frac{3}{4}$ " ϕ x 6" Round Head Bolts (With slot or approved recess in head) with locknut & flat washer. $\frac{1}{8}$ " ϕ holes in hollow structural section may be drilled in the field



Notes:
 All field drilled holes shall be coated with an approved zinc rich paint before erection.
 For multi-span bridges, sufficient $\frac{1}{4}$ " x 6" x 1'-2" galvanized steel shims shall be provided to align rail between adjacent spans. Cost included with Steel Rolling, Type SM.
 Steel rail elements shall be galvanized according to Article 509.05 of the Standard Specifications.
 The studs of the anchor devices shall be placed below the top reinforcement bars and the outermost longitudinal reinforcement bar shall be placed directly above the studs of the rail post anchor device.
 Bottom section of existing rail anchor device to remain in place.

BILL OF MATERIAL

Item	Unit	Quantity
Steel Rolling, Type SM	Foot	134

(6'-3" Maximum Post Spacing) (5" minimum to 7 $\frac{1}{8}$ " maximum CWS thickness)



USER NAME - 100T	DESIGNED - B.N.S./J.W./H.S.J.	REVISED -
PLT SCALE - 1/8" = 1'-0"	CHECKED - B.N.S./H.S.J./J.W.	REVISED -
PLT DATE - 5/9/2013	DRAWN - F.M.	REVISED -
	DATE - MARCH, 2013	REVISED -

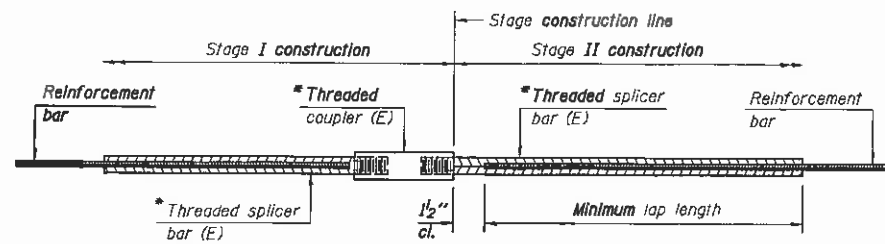
STATE OF ILLINOIS
 DEPARTMENT OF TRANSPORTATION

STEEL RAILING, TYPE SM WITH CONCRETE WEARING SURFACE
 STRUCTURE NO. 008-0035

F.A.P. RITE	SECTION	COUNTY	TOTAL SHEET NO.
642	02 DECK REPAIR 2013-4	CARROLL	25 19
			CONTRACT NO. 64J55

SHEET NO. 56 OF 57 SHEETS

ILLINOIS FED. AID PROJECT



STANDARD BAR SPLICER ASSEMBLY

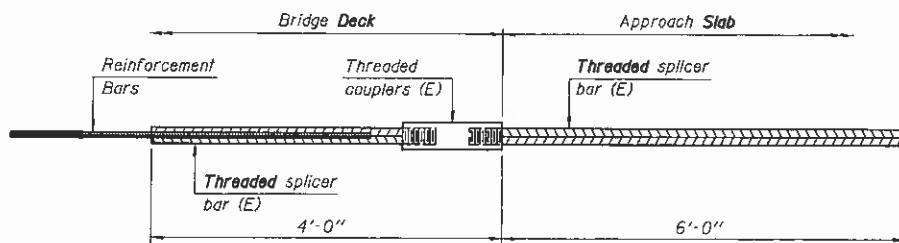
Bar size to be spliced	Minimum Lap Lengths					
	Table 1	Table 2	Table 3	Table 4	Table 5	Table 6
3, 4	1'-5"	1'-11"	2'-1"	2'-4"	2'-7"	2'-11"
5	1'-9"	2'-5"	2'-7"	2'-11"	3'-3"	3'-8"
6	2'-1"	2'-11"	3'-1"	3'-6"	3'-10"	4'-5"
7	2'-9"	3'-10"	4'-2"	4'-8"	5'-2"	5'-10"
8	3'-8"	5'-1"	5'-5"	6'-2"	6'-9"	7'-8"
9	4'-7"	6'-5"	6'-10"	7'-9"	8'-7"	9'-8"

- Table 1: Black bar, 0.8 Class C
- Table 2: Black bar, Top bar lap, 0.8 Class C
- Table 3: Epoxy bar, 0.8 Class C
- Table 4: Epoxy bar, Top bar lap, 0.8 Class C
- Table 5: Epoxy bar, Class C
- Table 6: Epoxy bar, Top bar top, Class C

Threaded splicer bar length = min. lap length + 1/2" + thread length

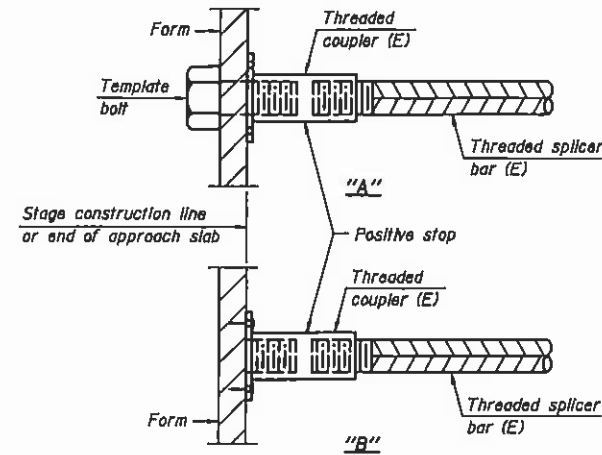
* Epoxy not required on Bar Splicer Assembly components used in conjunction with black bars.

Location	Bar size	No. assemblies required	Table for minimum lap length
Concrete Wearing Surface	#5	70	3
Abutment Backwalls	#6	12	3
Total		82	



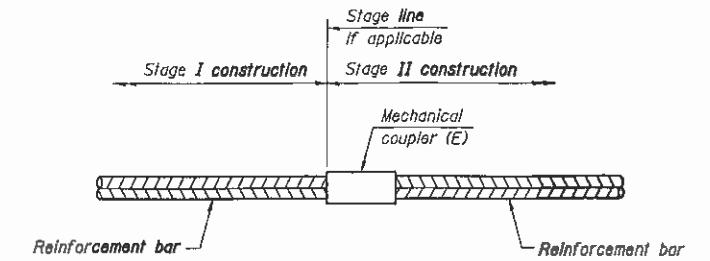
BAR SPLICER ASSEMBLY FOR #5 BAR ON INTEGRAL OR SEMI-INTEGRAL ABUTMENTS

No. required = -



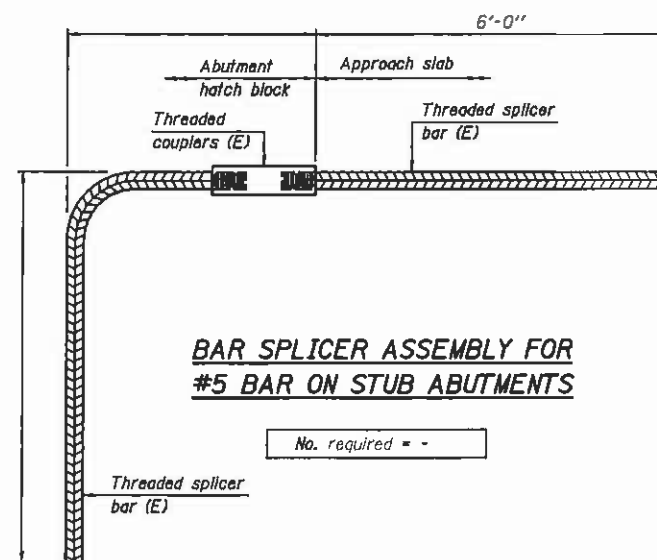
INSTALLATION AND SETTING METHODS

- *A : Set bar splicer assembly by means of a template bolt.
- *B : Set bar splicer assembly by nailing to wood forms or cementing to steel forms.
- (E) : Indicates epoxy coating.



STANDARD MECHANICAL SPLICER

Location	Bar size	No. assemblies required



BAR SPLICER ASSEMBLY FOR #5 BAR ON STUB ABUTMENTS

No. required = -

NOTES

- Splicer bars shall be deformed with threaded ends and have a minimum 60 ksi yield strength.
- All reinforcement shall be lapped and tied to the splicer bars.
- Bar splicer assemblies shall be epoxy coated according to the requirements for reinforcement bars. See Section 508 of the Standard Specifications.
- See approved list of bar splicer assemblies and mechanical splicers for alternatives.

FILE NAME = I:\02709_Plum River\Structure\CADD Sheets\0254-055-07-bar splicer.dgn

BSD-1 1-27-12



USER NAME = IDDT	DESIGNED - B.N.S./J.W./H.S.J.	REVISED -
PLLOT SCALE = 5/8" = 1' / INL	CHECKED - B.N.S./H.S.J./J.W.	REVISED -
PLLOT DATE = 3/8/2013	DRAWN - F.M.	REVISED -
	DATE - MARCH, 2013	REVISED -

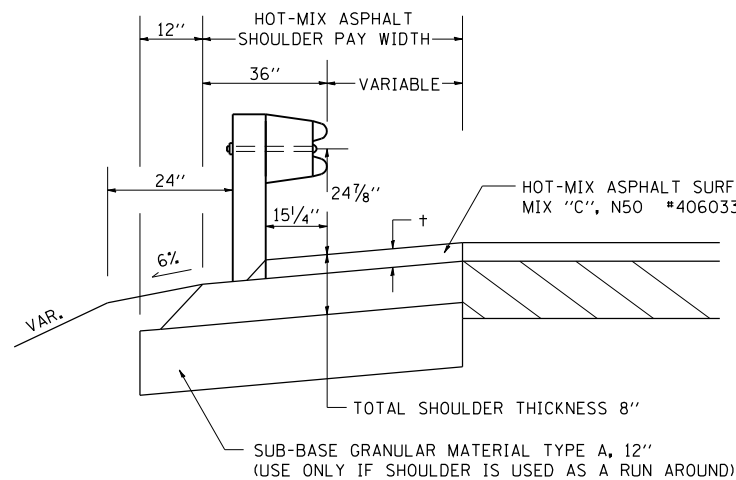
STATE OF ILLINOIS
DEPARTMENT OF TRANSPORTATION

BAR SPLICER ASSEMBLY AND MECHANICAL SPLICER DETAILS
STRUCTURE NO. 008-0035

SHEET NO. 57 OF 57 SHEETS

F.A.P. RTE.	SECTION	COUNTY	TOTAL SHEETS	SHEET NO.
642	D2 DECK REPAIR 2013-4	CARROLL	25	20
CONTRACT NO. 64J55				
ILLINOIS FED. AID PROJECT				

DETAIL OF HOT-MIX ASPHALT SHOULDER AT GUARD RAIL



+ = SEE TYPICAL SECTIONS FOR THICKNESS

GENERAL NOTES

THE TOP LIFT SHALL NOT BE PLACED BEHIND THE GUARDRAIL POSTS. WHEN PLACING THE TOP LIFT THE RAIL MUST BE REMOVED FROM THE POSTS. THE POST SHALL NOT BE REMOVED.

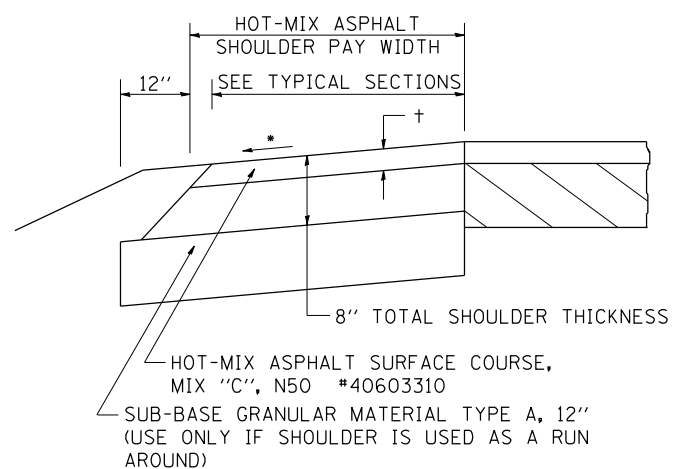
THE HEIGHT OF THE GUARD RAIL SHALL BE SET 24 7/8" FROM THE FINISHED SURFACE.

THE HOT-MIX ASPHALT SHOULDER SHALL BE CONSTRUCTED IN ACCORDANCE WITH SECTION 482 EXCEPT THE TOP LIFT SHALL BE HOT-MIX ASPHALT SURFACE COURSE, MIXTURE C, N50. THE WORK WILL BE PAID FOR AT THE CONTRACT UNIT PRICE PER TON FOR HOT-MIX ASPHALT SURFACE COURSE, MIXTURE "C", N50 AND SQUARE YARD FOR HOT-MIX ASPHALT SHOULDERS OF THE THICKNESS SPECIFIED. THE REMOVAL & REINSTALLATION OF THE GUARDRAIL WILL BE INCLUDED IN THE COST OF THE HOT-MIX ASPHALT SURFACE COURSE, MIXTURE C, N50.

REVISED - 6-06-11

DETAIL OF HOT-MIX ASPHALT SHOULDER AT GUARD RAIL 23.4

HOT-MIX ASPHALT SHOULDER



GENERAL NOTES

THE HOT-MIX ASPHALT SHOULDER SHALL BE CONSTRUCTED IN ACCORDANCE WITH SECTION 482 EXCEPT THE TOP LIFT SHALL BE HOT-MIX ASPHALT SURFACE COURSE, MIX "C", N50 #40603310. THE WORK WILL BE PAID FOR AT THE CONTRACT UNIT PRICE PER TON FOR HOT-MIX ASPHALT SURFACE COURSE, MIX "C", N50 #40603310 AND SQUARE YARD FOR HOT-MIX ASPHALT SHOULDERS OF THE THICKNESS SPECIFIED.

USE HOT-MIX ASPHALT SURFACE COURSE, MIX "C", N50 #40603310. WHEN RESURFACING EXISTING HOT-MIX ASPHALT SHOULDERS. THE THICKNESS IS SHOWN ON THE TYPICAL SECTIONS. THIS WORK WILL BE PAID FOR AT THE CONTRACT UNIT PRICE PER TON FOR HOT-MIX ASPHALT SURFACE COURSE, MIX "C", N50 #40603310.

REMOVAL OF MATERIAL FOR PLACEMENT OF THE HOT-MIX ASPHALT SHOULDER TO BE PAID FOR IN UNITS FOR EXCAVATING AND GRADING EXISTING SHOULDERS OR IN CUBIC YARDS FOR EARTH EXCAVATION OR EARTH EXCAVATION WIDENING.

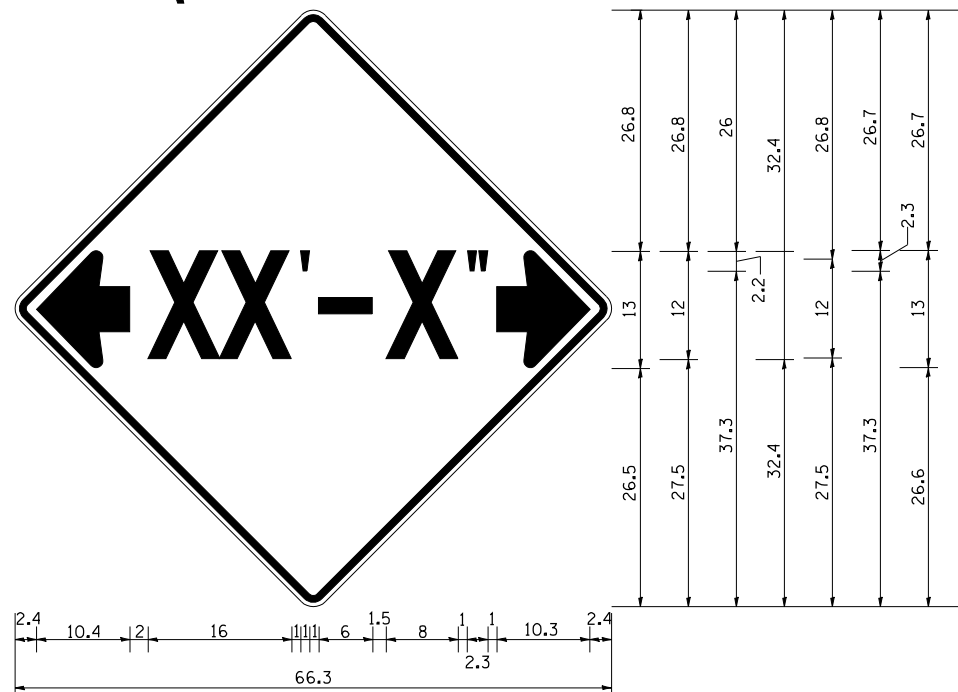
* 4% WHEN MAINLINE IS ON TANGENT. FOR CROSS SLOPE ON SUPERELEVATION SECTION, SEE HIGHWAY STANDARD 482001 OR 482006.

+ = SEE TYPICAL SECTIONS FOR THICKNESS

REVISED - 6-06-11

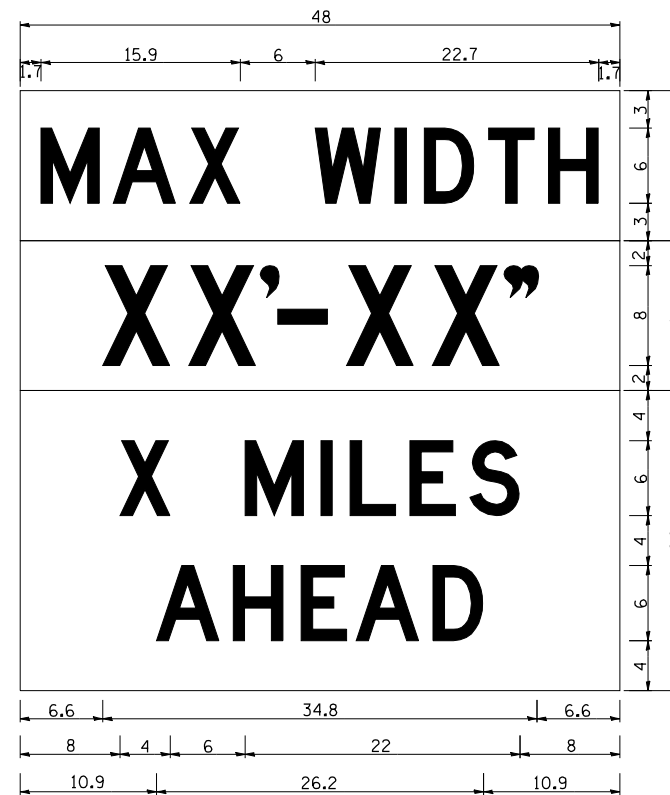
HOT-MIX ASPHALT SHOULDER 23.4a

INFORMATIONAL WARNING SIGN (FOR NARROW TRAVEL LANES)



NOTES

W12-2 - Horizontal Clearance Sign 48.0" across sides, 1.9" Radius, 0.8" Border, 0.5" Indent, Black on Orange; Standard Arrow Custom 10.4" X 8.1" 180° Black 11 Inch D Series Lettering; Standard Arrow Custom 10.4" X 8.1" 0°



W12-1103 (Width is 8D); No border, Black on White; [MAX WIDTH] D;

No border, Black on Orange; [XX'-XX''] D;

No border, Black on White; [X MILES] D; [AHEAD] D;

All work to furnish and install these signs shall be included in the cost of the Traffic Control Standards and shall not be paid for separately.

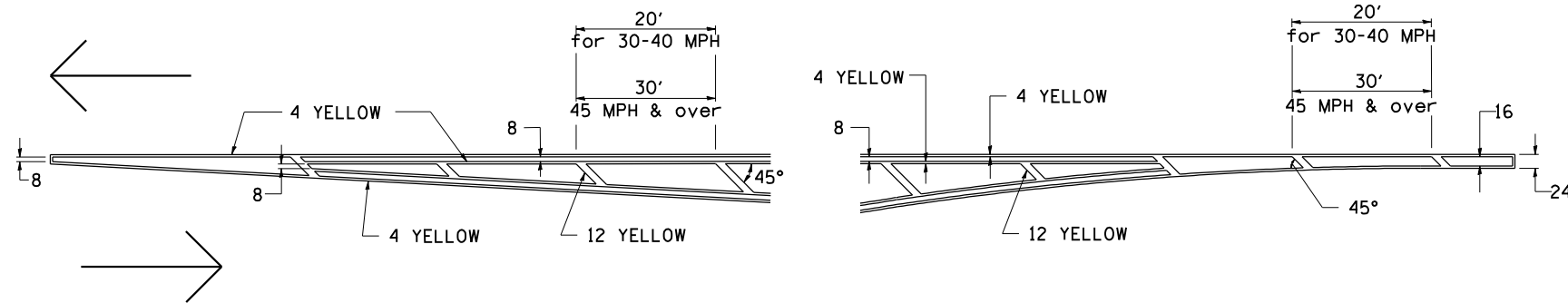
ALL DIMENSIONS ARE IN INCHES UNLESS OTHERWISE NOTED.

REVISED - 5-15-09	REGION 2 / DISTRICT 2 STANDARD		F.A.P. RTE.	SECTION	COUNTY	TOTAL SHEETS	SHEET NO.
REVISED -			642	D2 DECK REPAIR 2013-4	CARROLL	25	21
REVISED -			CONTRACT NO. 64J55				
REVISED -	SCALE: 100.0000' / 1" = 100'	SHEET NO. OF SHEETS STA. TO STA.	FED. ROAD DIST. NO. ILLINOIS FED. AID PROJECT				

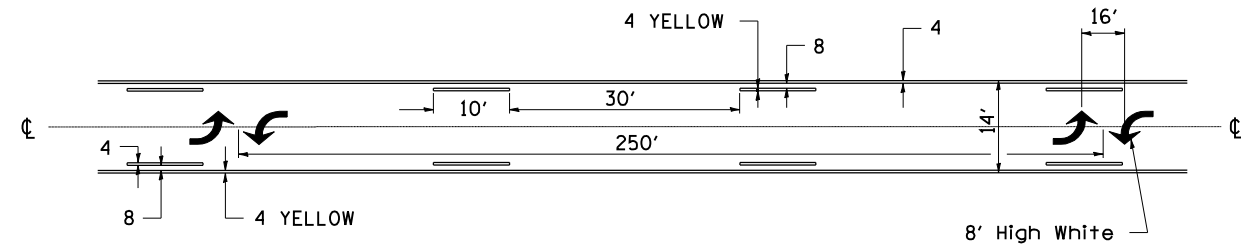
INFORMATIONAL WARNING SIGNS (FOR NARROW TRAVEL LANES) 39.2

TYPICAL PAVEMENT MARKINGS

TYPICAL PAVEMENT MARKING FOR FLUSH MEDIAN AT LEFT TURN LANE

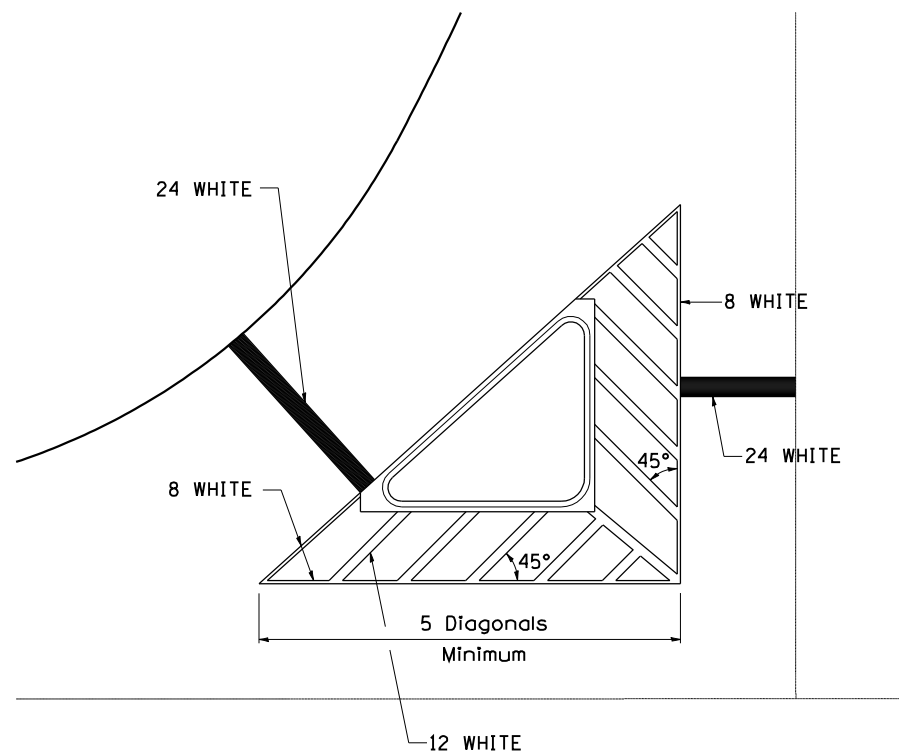


MEDIAN PAVEMENT MARKING

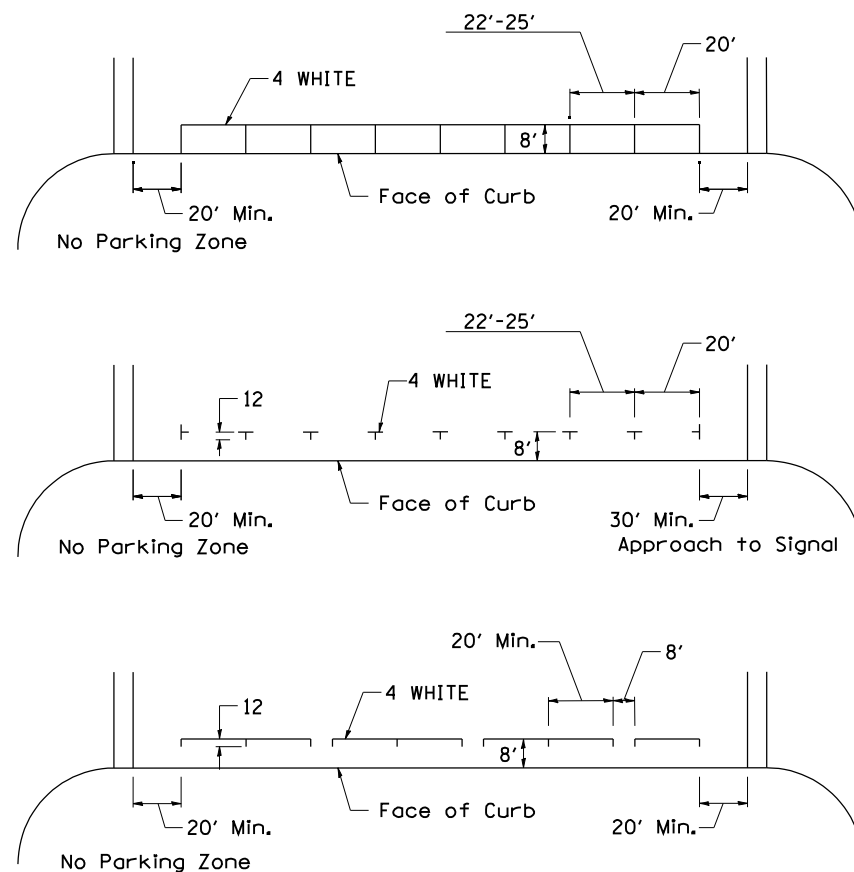


•• ALL DIMENSIONS ARE IN INCHES UNLESS OTHERWISE NOTED.

TYPICAL ISLAND OFFSET SHOULDER WIDTH

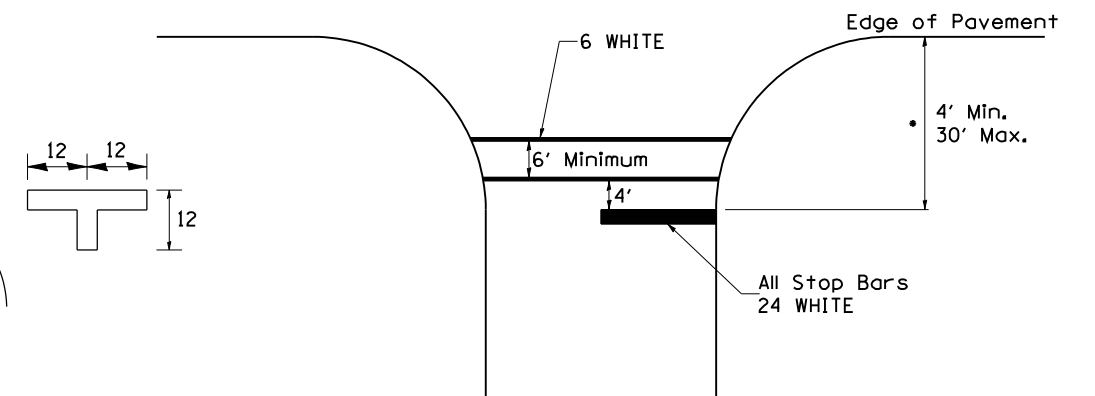


TYPICAL PARKING SPACING



STANDARD CROSSWALK MARKING

See Schedules for Locations

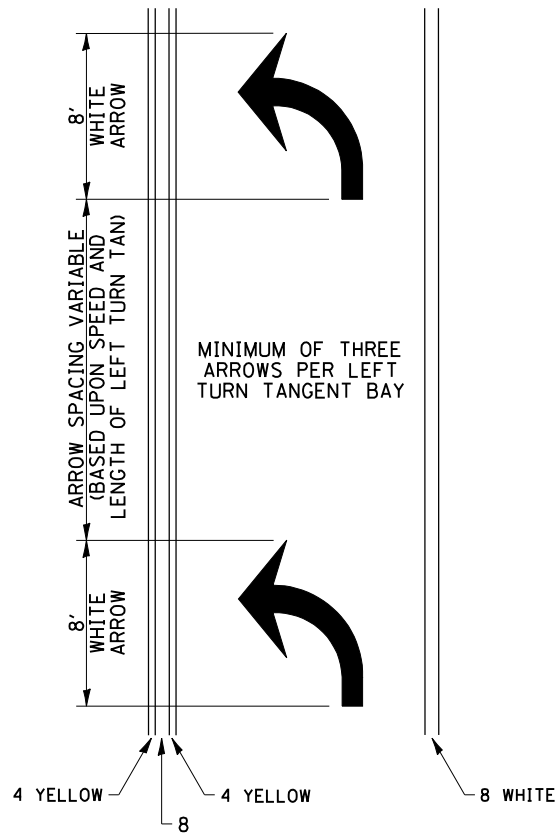


• Distance to the nearest edge of the intersecting roadway in the absence of a marked crosswalk.

FILE NAME =	USER NAME = IDOT	DESIGNED -	REVISED - 10-18-11	STATE OF ILLINOIS DEPARTMENT OF TRANSPORTATION	REGION 2 / DISTRICT 2 STANDARD			F.A.P. RTE.	SECTION	COUNTY	TOTAL SHEETS	SHEET NO.
It:\102709_Plum River\CADD Sheets\0264H2-sh1-DETAIL02.dgn	DRAWN -	REVISED -	642					D2 DECK REPAIR 2013-4	CARROLL	25	22	
PLOT SCALE = 100.0000' / IN.	CHECKED -	REVISED -	CONTRACT NO. 64J55									
PLOT DATE = 3/7/2013	DATE -	REVISED -	FED. ROAD DIST. NO. ILLINOIS FED. AID PROJECT									

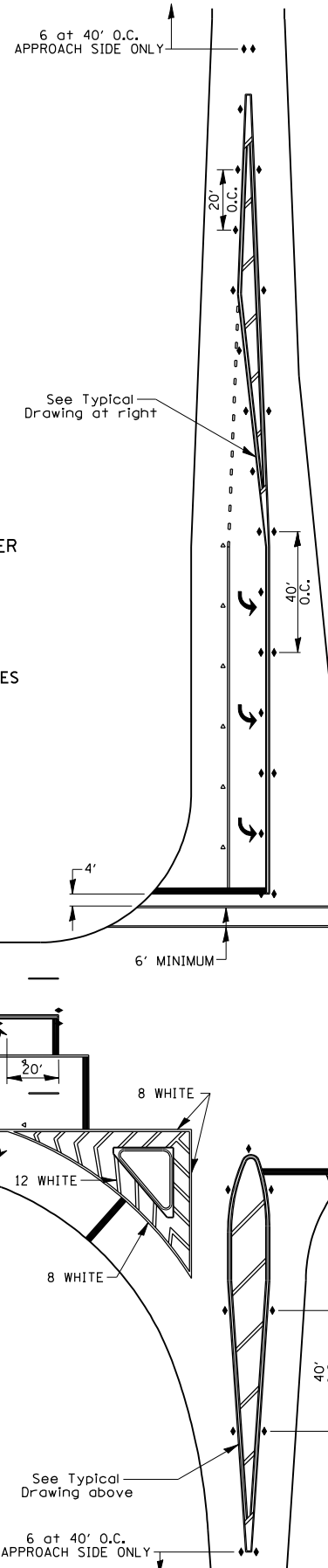
TYPICAL PAVEMENT MARKINGS

ARROW LAYOUT

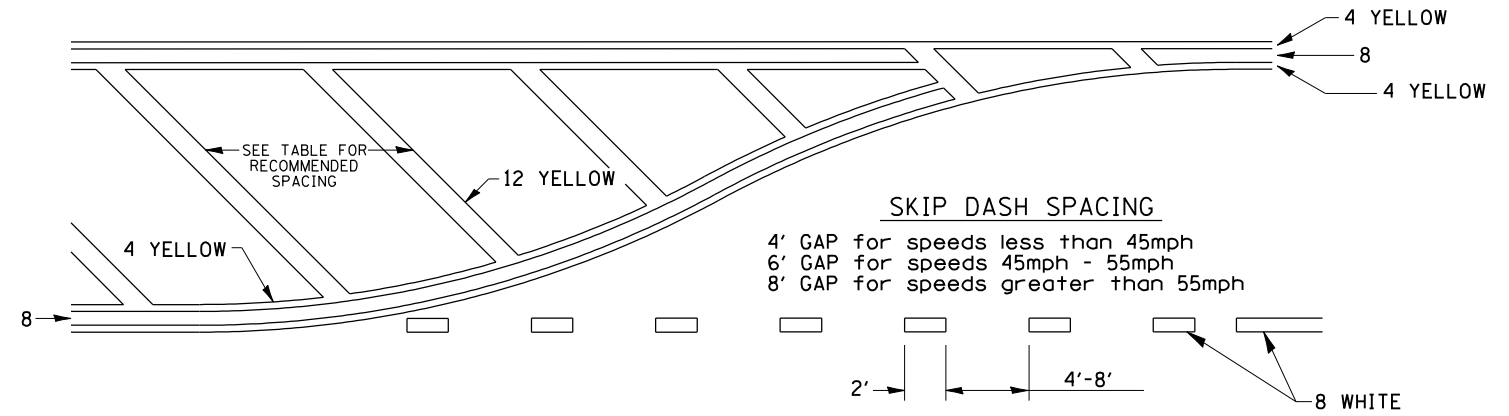


- ◀ ONE-WAY AMBER MARKER
- ◁ ONE-WAY CRYSTAL MARKER
- ◆ TWO-WAY AMBER MARKER

ALL DIMENSIONS ARE IN INCHES UNLESS OTHERWISE NOTED.



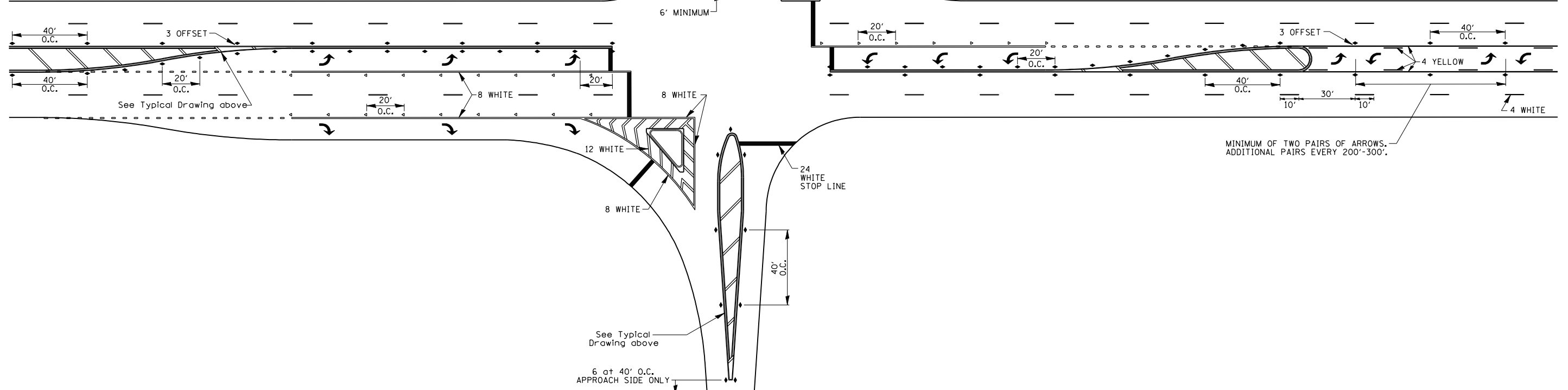
TYPICAL PAVEMENT MARKING FOR FLUSH MEDIAN



RECOMMENDED SPACING BETWEEN DIAGONALS (IN FEET)

Speed Limit Range	Continuous Median Area	Intersection Channelization	Objects (Islands)
less than 30MPH	50'	15'	10'
30-40MPH	75'	20'	15'
45MPH & over	75'	30'	20'

NOTE: if the spacing recommended in the Table does not permit at least five diagonal lines in the area being marked, the spacing from the next lowest speed range should be used. The recommended spacing is measured parallel to the pavement center line.



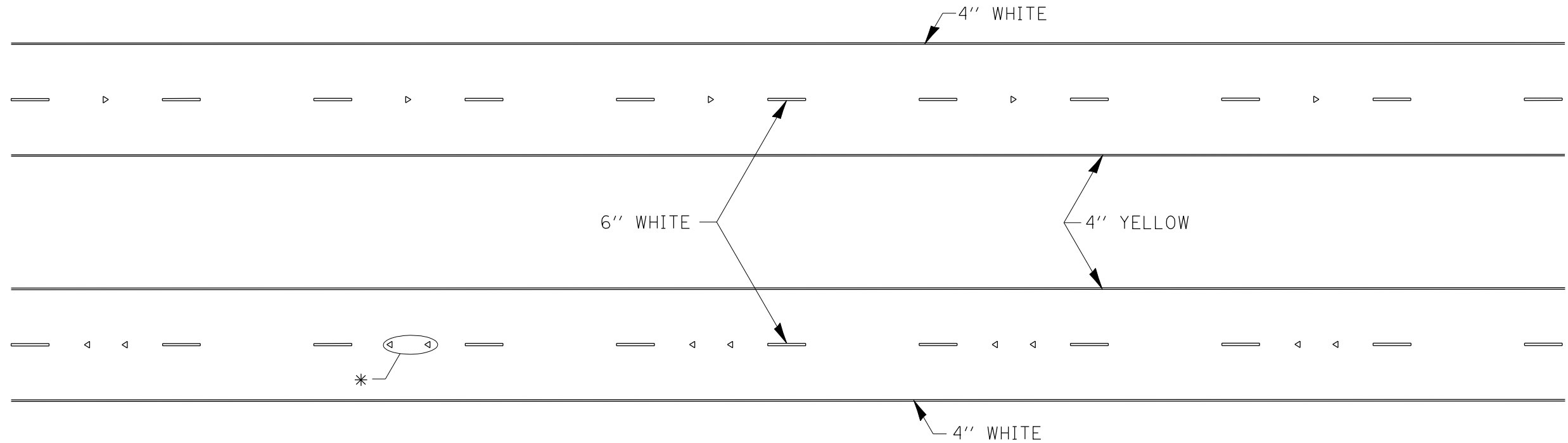
FILE NAME =	USER NAME = IDOT	DESIGNED -	REVISED - 10-18-11
It:\102709_Plum River\CADD Sheets\0264H2-sh-t-DETAIL02.dgn		DRAWN -	REVISED -
		CHECKED -	REVISED -
		DATE -	REVISED -

**STATE OF ILLINOIS
DEPARTMENT OF TRANSPORTATION**

REGION 2 / DISTRICT 2 STANDARD			
SCALE:	SHEET NO.	OF SHEETS	STA. TO STA.

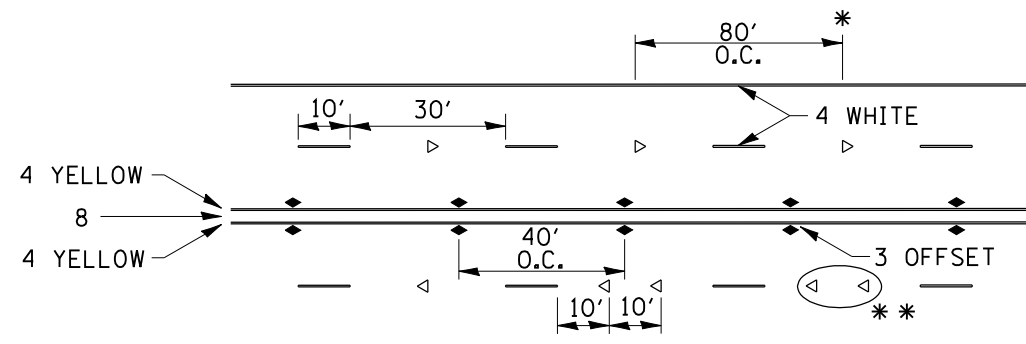
F.A.P. RTE.	SECTION	COUNTY	TOTAL SHEETS	SHEET NO.
642	D2 DECK REPAIR 2013-4	CARROLL	25	23
CONTRACT NO. 64J55				
FED. ROAD DIST. NO. ILLINOIS FED. AID PROJECT				

TYPICAL PAVEMENT MARKINGS



* SEE HIGHWAY STANDARD 781001 FOR SPACING DETAILS.
USE DOUBLE MARKERS WHEN ADT \geq 25,000.

MULTI-LANE / DIVIDED

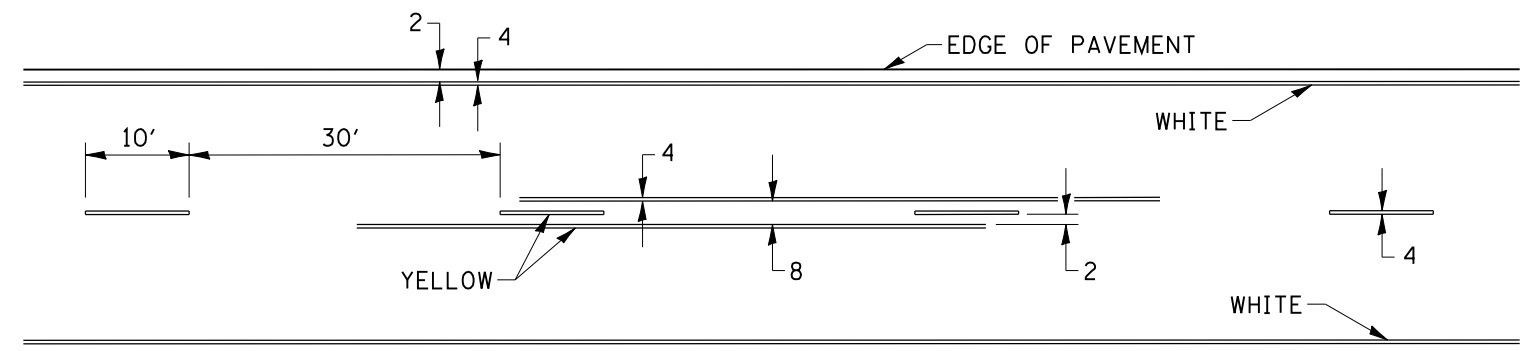


- * REDUCE TO 40' O.C. ON CURVES WHERE ADVISORY SPEEDS ARE 10 MPH LOWER THAN POSTED SPEEDS.
- ** USE DOUBLE MARKERS WHEN ADT \geq 25,000

MULTI-LANE / UNDIVIDED

(FOR MULTI-LANE UNDIVIDED HIGHWAYS USE THIS
DETAIL NOT HIGHWAY STANDARD 781001)

TYPICAL PAVEMENT MARKING FOR TWO LANE SECTION – NO PASSING ZONES



SYMBOLS

FILE NAME =	USER NAME = IDOT	DESIGNED -	REVISED - 10-18-11	STATE OF ILLINOIS DEPARTMENT OF TRANSPORTATION	REGION 2 / DISTRICT 2 STANDARD				F.A.P. RTE.	SECTION	COUNTY	TOTAL SHEETS	SHEET NO.	
It:\02709_Plum River\CADD Sheets\026421-sh1-DETAIL02.dgn		DRAWN -	REVISED -		SCALE:	SHEET NO.	OF SHEETS	STA.	TO STA.	342	D2 DECK REPAIR 2013-4	CARROLL	25	24
		CHECKED -	REVISED -						CONTRACT NO. 64J55					
		DATE -	REVISED -						ILLINOIS FED. AID PROJECT					

STOP LINE SIGN FOR TEMPORARY SIGNALS



SIZE: 24 x 24
 4 CAPITAL LETTERS - BLACK
 1/2 BORDER - BLACK
 WHITE REFLECTIVE - TYPE AP
 HIGH INTENSITY PRISMATIC SHEETING

GENERAL NOTE:

THIS SIGN SHALL BE INSTALLED AT THE STOP LINE AS DIRECTED BY ENGINEER.
 ALL DIMENSIONS ARE IN INCHES UNLESS OTHERWISE NOTED.

REVISED - 10-11-11

STOP LINE SIGN FOR TEMPORARY SIGNALS 99.4

ROUGH GROOVED SURFACE SIGN

ILLINOIS STANDARD W8-I107
 SIGN PANEL TYPE 1



COLOR: LEGEND AND BORDER - BLACK NON-REFLECTIVE
 BACKGROUND - ORANGE REFLECTORIZED

SIGN SIZE	DIMENSIONS							
	A	B	C	D	E	F	G	H
48x48	48.0	24.1	3.0	34.0	33.0	6.0	13.0	3.5

SIGN SIZE	SERIES LINES			MARGIN	BORDER	BLANK STD.
	1	2	3			
	48x48	7C	7C			

ALL DIMENSIONS IN INCHES.

GENERAL NOTES

SIGN PANELS AND FACE MATERIALS SHALL BE ACCORDING TO SECTION 720 OF THE STANDARD SPECIFICATIONS
 METAL POSTS SHALL BE IN ACCORDANCE WITH STD. 720011.

ALL MOUNTING HARDWARE SHALL BE ALUMINUM, STAINLESS STEEL, ZINC OR CADMIUM PLATED STEEL AND SHALL BE INCLUDED TO THE COST OF THE INSTALLATION.

ALL DIMENSIONS ARE IN INCHES UNLESS OTHERWISE NOTED.

REVISED - 10-14-11	REGION 2 / DISTRICT 2 STANDARD	F.A.P. RTE.	SECTION	COUNTY	TOTAL SHEETS	SHEET NO.
REVISED -		642	D2 DECK REPAIR 2013-4	CARROLL	25	25
REVISED -		CONTRACT NO. 64J55				
REVISED -		SCALE: 100.0000' / IN.	SHEET NO.	OF SHEETS	STA.	TO STA.

PLOT DATE = 3/7/2013