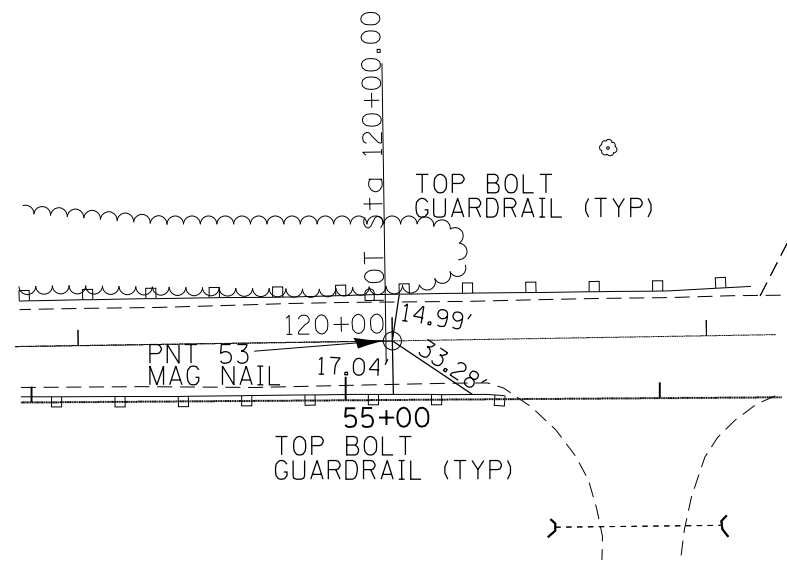
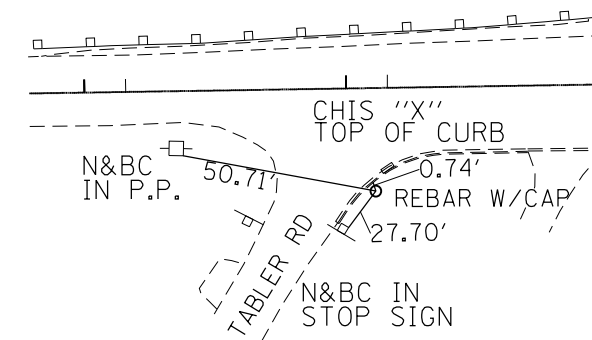


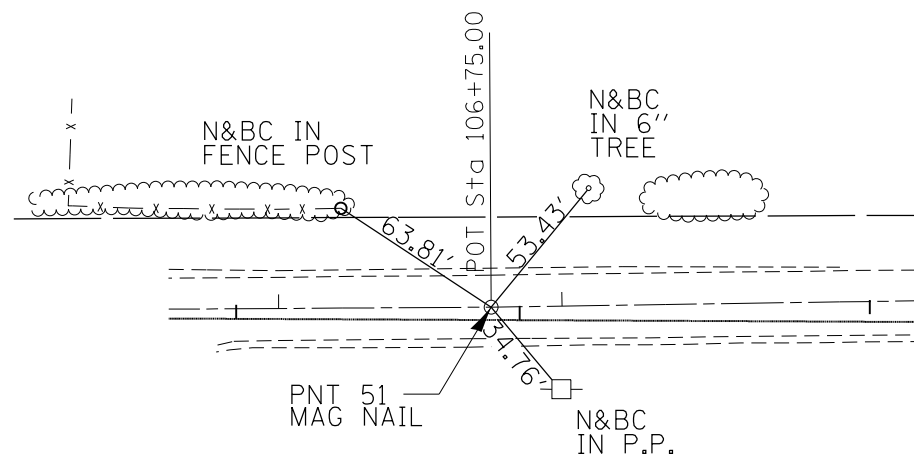
**MINOOKA 1 CP STA. 83+01.39(EX) 25.85' RT  
POINT 50 STA. 83+61.48(EX)/STA. 18+76.45(PR)**



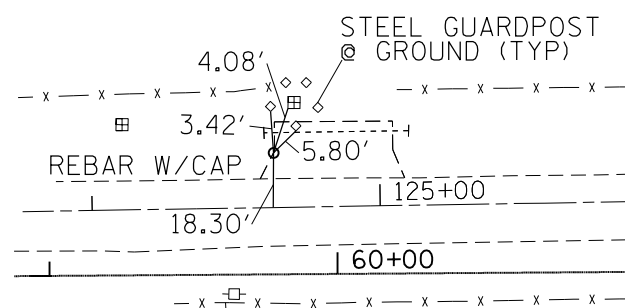
**PNT 53 STA. 120+00(EX)**



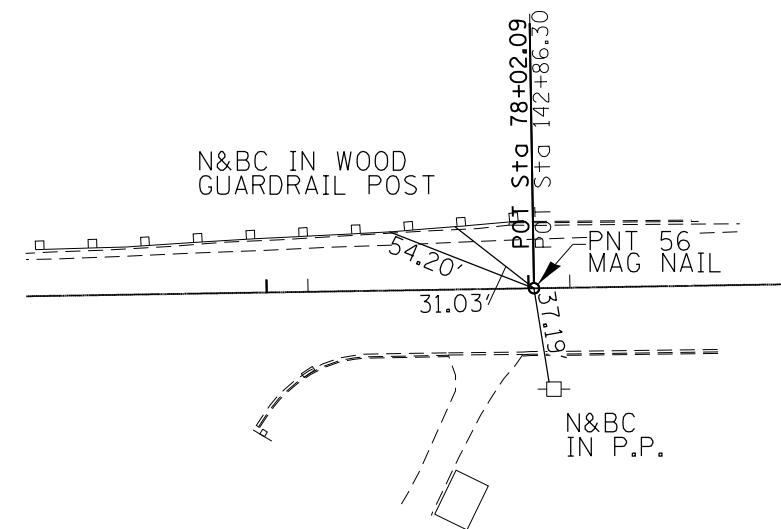
**MINOOKA 4 CP STA. 141+96.22(EX) 35.03' RT  
STA. 77+12.00(PR) 35.03' RT**



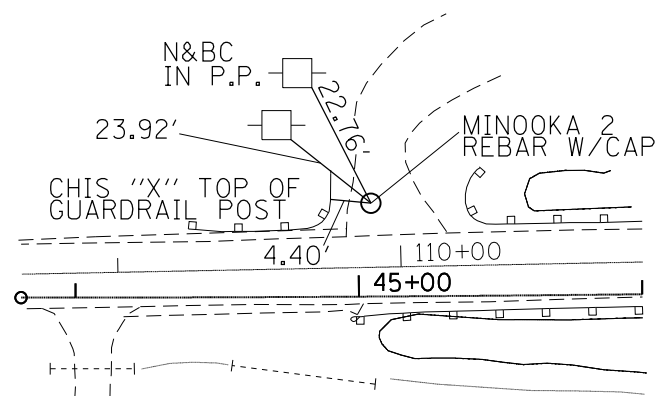
**PNT 51 STA. 106+75(EX)**



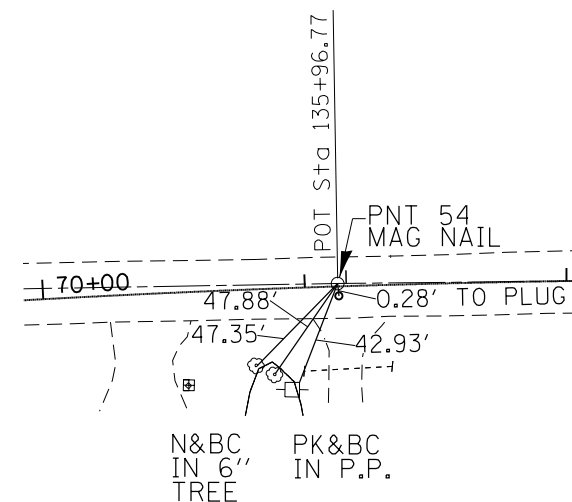
**MINOOKA 3 CP STA. 124+63.54(EX) 28.70' LT  
STA. 59+78.5(PR) 51.92' LT**



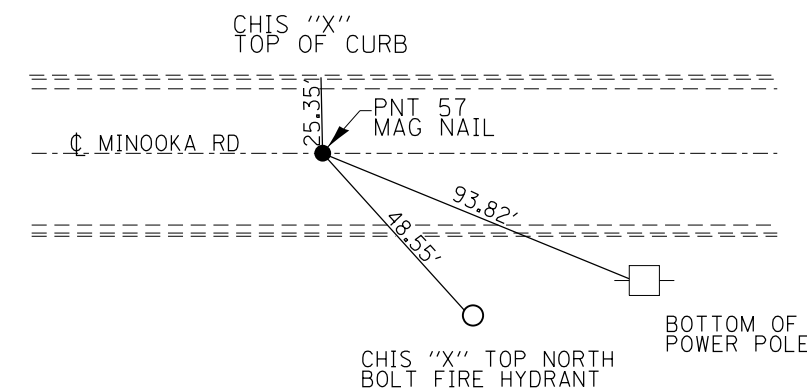
**PNT 56 STA. 142+86.30(EX)/STA. 78+02.09(PR)**



**MINOOKA 2 CP STA. 109+79.55(EX) 20.04' LT  
STA. 44+94.45(PR) 30.22' LT**



**PNT 54 STA. 135+96.77(EX)**



**PNT 56 STA. 158+10.03(EX)/STA. 93+25.51(PR)**

FILE NAME =	USER NAME = duncanbd	DESIGNED -	REVISED -	<b>STATE OF ILLINOIS DEPARTMENT OF TRANSPORTATION</b>	<b>ALIGNMENT, TIES &amp; BENCHMARKS</b>	F.A.I. RTE.	SECTION	COUNTY	TOTAL SHEETS	SHEET NO.	
Default	Plot Scale = 250.0000' / in.	DRAWN -	REVISED -			80	(32,47-4)HBR-2	GRUNDY	143	25	
	PLOT DATE = 3/15/2013	CHECKED -	REVISED -			CONTRACT NO. 66873					
		DATE -	REVISED -			ILLINOIS FED. AID PROJECT					
					SCALE: NTS	SHEET 3 OF 3 SHEETS	STA.	TO STA.			