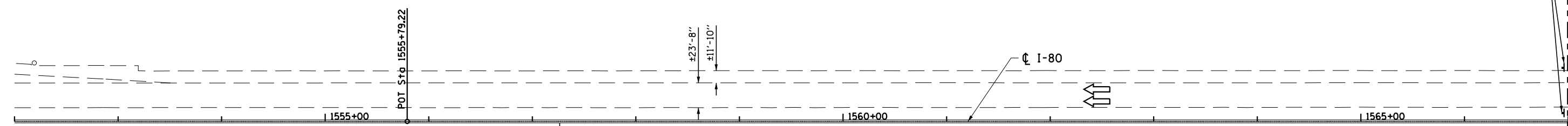


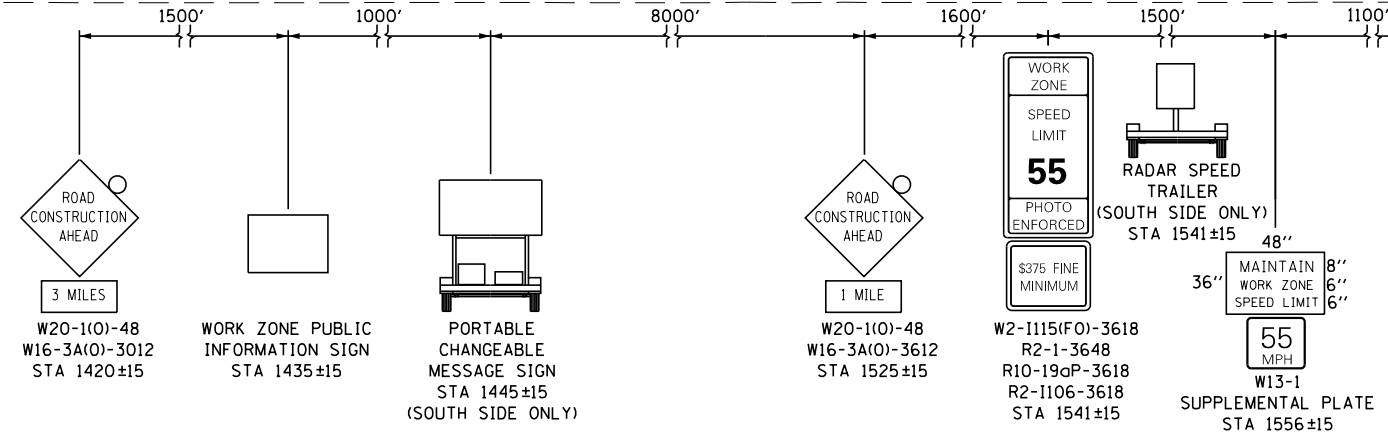
END WORK ZONE SPEED LIMIT  
G20-1103(O)-3660  
STA 1567±00

MATCH LINE STA. 1567 + 00

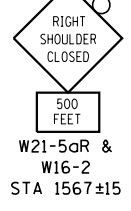
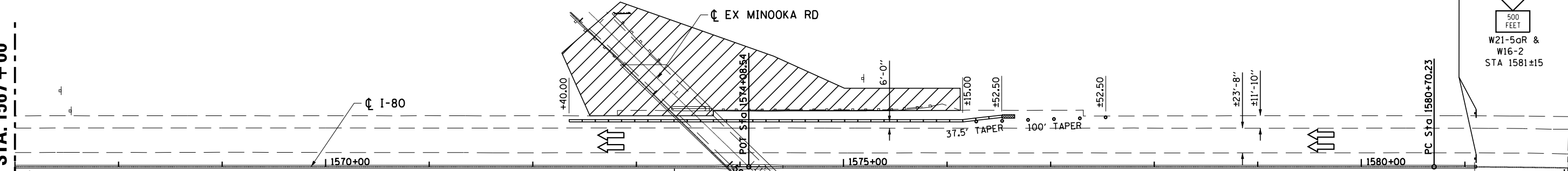


- LEGEND**
- WORK ZONE
  - DIRECTION OF TRAFFIC
  - DRUMS WITH MONO-DIRECTIONAL STEADY BURNING LIGHTS @ 50' CENTERS, 25' CENTERS ALONG TAPERS
  - IMPACT ATTENUATOR, TEMPORARY (FULLY REDIRECTIVE)
  - TEMPORARY CONCRETE BARRIER

TEMPORARY CONCRETE BARRIER	
NORMAL POSTED SPEED	TAPER RATIO
40 MPH & ABOVE	12:1
BELOW & 40 MPH	8:1



MATCH LINE STA. 1567 + 00



END WORK ZONE SPEED LIMIT  
G20-1103(O)-3660  
STA 1582±00

MATCH LINE STA. 1582 + 00

FILE NAME =	USER NAME = duncanbd	DESIGNED -	REVISED -	<b>STATE OF ILLINOIS DEPARTMENT OF TRANSPORTATION</b>	<b>SUGGESTED MAINTENANCE OF TRAFFIC I-80 STAGE 1</b>				F.A.I. RTE.	SECTION	COUNTY	TOTAL SHEETS	SHEET NO.
et:\pw\work\p1dot\duncanbd\dms58037\ep01904-sht-staging.DGN		DRAWN -	REVISED -		80	(32,47-4)HBR-2	GRUNDY	143	32				
*MODELNAME*	PLOT SCALE = 100.0000' / in.	CHECKED -	REVISED -		CONTRACT NO. 66873								
	PLOT DATE = 3/15/2013	DATE -	REVISED -		ILLINOIS FED. AID PROJECT								