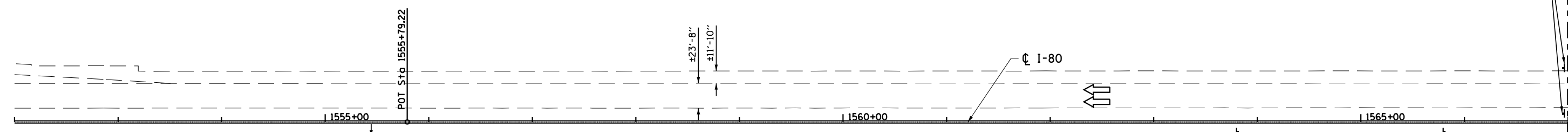


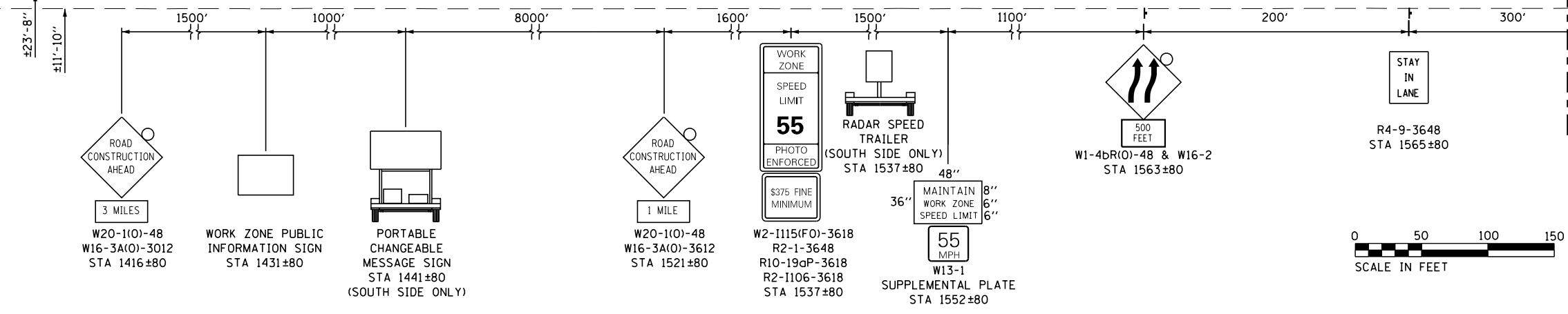
END
WORK ZONE
SPEED LIMIT
G20-1103(O)-3660
STA 1567±00

MATCH LINE STA. 1567 + 00

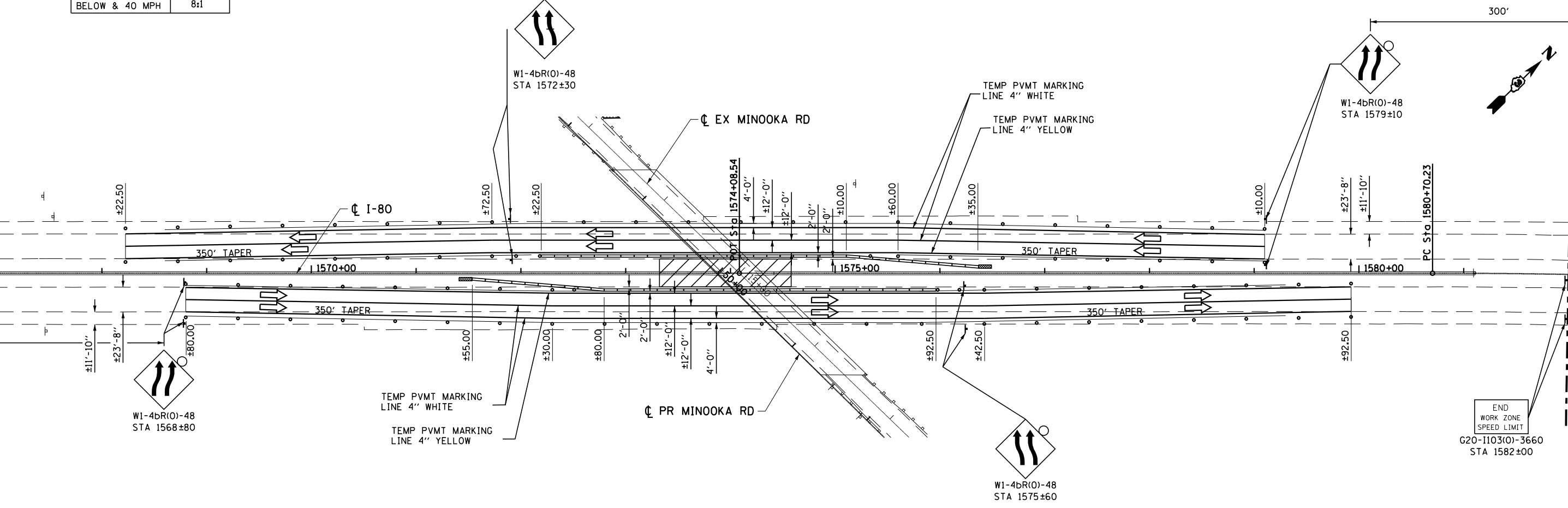


- LEGEND**
- WORK ZONE
 - DIRECTION OF TRAFFIC
 - DRUMS WITH MONO-DIRECTIONAL STEADY BURNING LIGHTS @ 50' CENTERS, 25' CENTERS ALONG TAPERS
 - IMPACT ATTENUATOR, TEMPORARY (FULLY REDIRECTIVE)
 - TEMPORARY CONCRETE BARRIER

TEMPORARY CONCRETE BARRIER	
NORMAL POSTED SPEED	TAPER RATIO
40 MPH & ABOVE	12:1
BELOW & 40 MPH	8:1



MATCH LINE STA. 1567 + 00



MATCH LINE STA. 1582 + 00

END
WORK ZONE
SPEED LIMIT
G20-1103(O)-3660
STA 1582±00

FILE NAME =	USER NAME = duncanbd	DESIGNED -	REVISED -	STATE OF ILLINOIS DEPARTMENT OF TRANSPORTATION	SUGGESTED MAINTENANCE OF TRAFFIC I-80 STAGE 2				F.A.I. RTÉ.	SECTION	COUNTY	TOTAL SHEETS	SHEET NO.
ci:\pw\work\p1dot1\duncanbd\dms58037\ep01904-sht-staging.DGN	PLOT SCALE = 100.0000' / in.	DRAWN -	REVISED -		80	(32,47-4)HBR-2	GRUNDY	143	34				
MODELNAME	PLOT DATE = 3/15/2013	CHECKED -	REVISED -		SCALE: SHEET OF SHEETS STA. TO STA.				CONTRACT NO. 66873				
		DATE -	REVISED -		ILLINOIS FED. AID PROJECT								