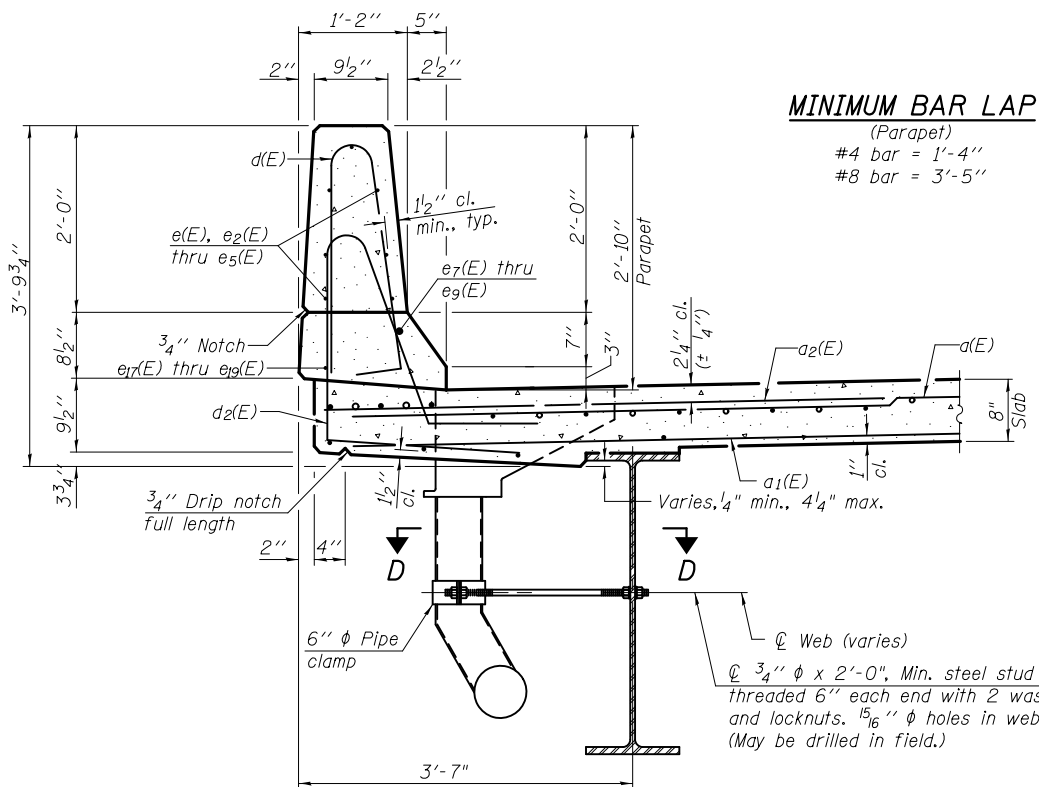
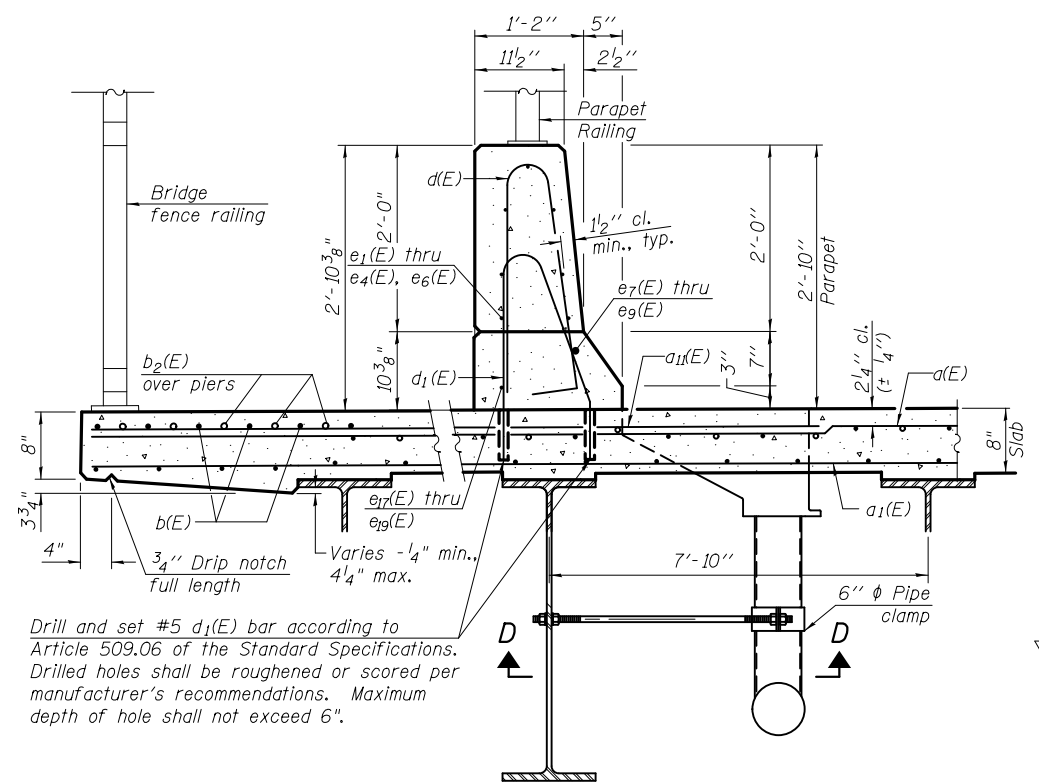


STATE OF ILLINOIS
DEPARTMENT OF TRANSPORTATION



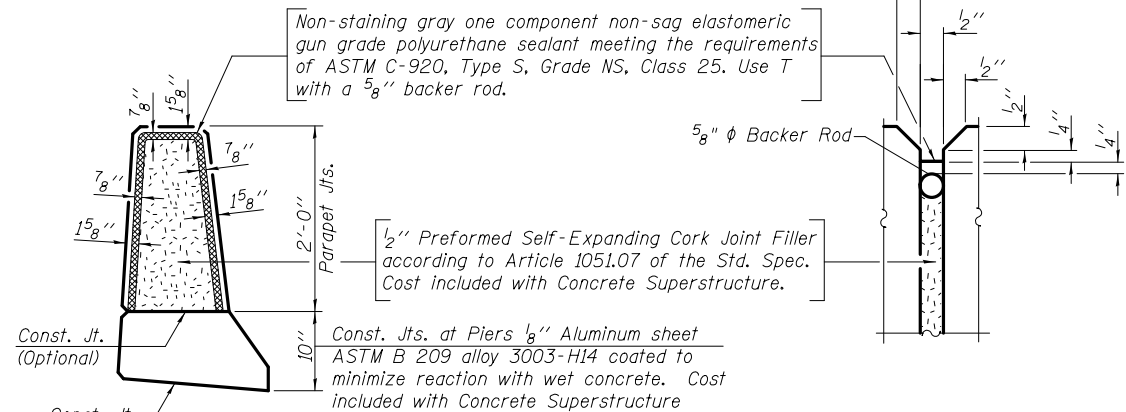
SECTION THRU SOUTH PARAPET



SECTION THRU NORTH PARAPET

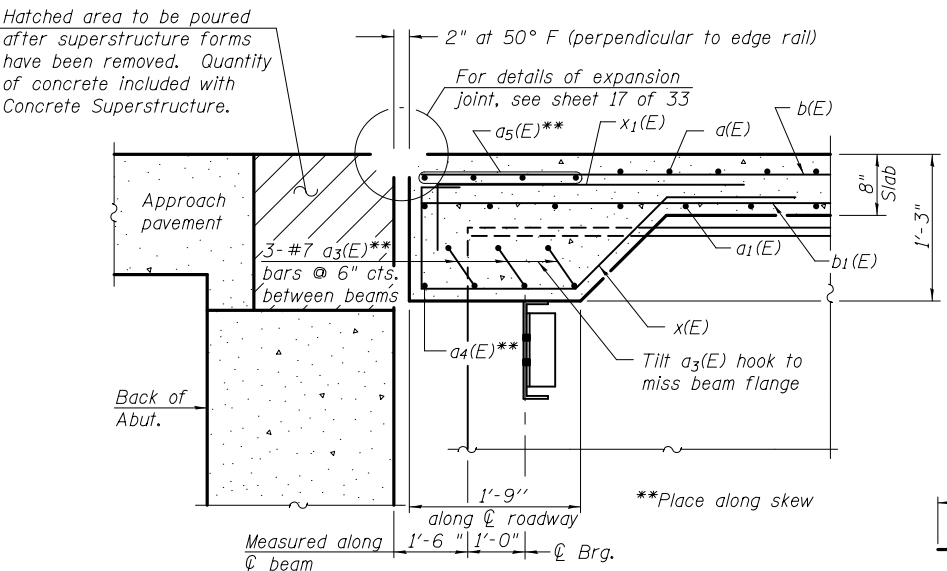
DESIGNED - JSI/MAJ/JFS
CHECKED - JFS/MJB
DRAWN - MLB/JLP
CHECKED - JFS/MJB

MINIMUM BAR LAP
(Parapet)
#4 bar = 1'-4"
#8 bar = 3'-5"

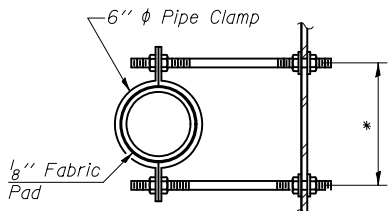


PARAPET JOINT DETAILS

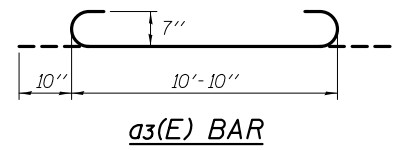
Notes:
Drains shall be located clear of all diaphragms.
The exterior surfaces of the floor drains shall be painted according to Section 506 of the Standard Specifications. The exterior surfaces of the drains shall be cleaned according to Steel Structures Painting Council's Spec. SSPC-SP1 prior to painting.
Fiberglass pipe shall conform to ASTM D 2996, with short-time rupture strength hoop tensile stress of 30,000 p.s.i. minimum.



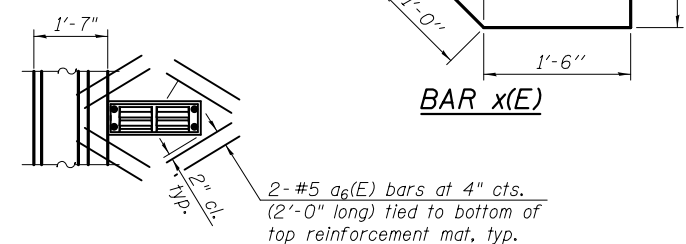
SECTION A-A



SECTION D-D
* Dimension as required by Pipe Clamp

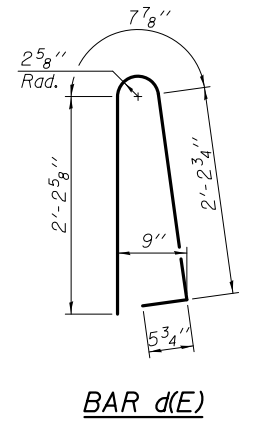


a3(E) BAR

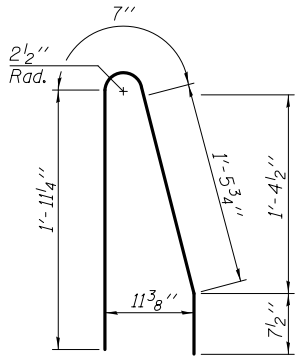


SCUPPER REINFORCING BAR DETAIL
Typical 20 locations.

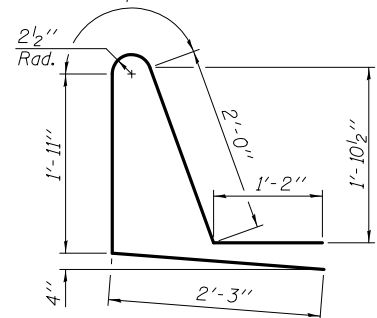
Note:
Cut longitudinal reinforcement to clear drainage scuppers.



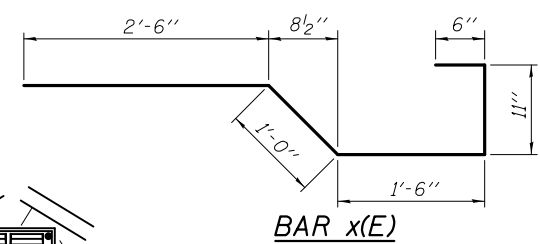
BAR d(E)



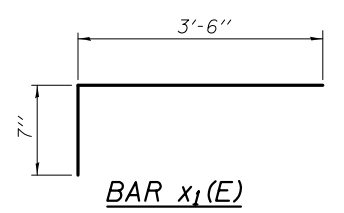
BAR d1(E)



BAR d2(E)



BAR x(E)



BAR x1(E)

**SUPERSTRUCTURE
BILL OF MATERIAL**

Bar	No.	Size	Length	Shape
a(E)	2490	#5	24'-7"	—
a1(E)	1016	#5	35'-8"	—
a2(E)	828	#6	6'-0"	—
a3(E)	48	#7	12'-6"	—
a4(E)	6	#7	35'-2"	—
a5(E)	24	#7	35'-2"	—
a6(E)	160	#5	2'-0"	—
a11(E)	828	#6	14'-8"	—
b(E)	648	#5	44'-4"	—
b1(E)	540	#5	40'-0"	—
b2(E)	213	#6	34'-0"	—
d(E)	838	#5	5'-7"	—
d1(E)	419	#5	4'-8"	—
d2(E)	419	#5	7'-11"	—
d3(E)	10	#6	8'-11"	—
d4(E)	33	#6	4'-5"	—
d5(E)	10	#6	10'-1"	—
d6(E)	25	#6	9'-4"	—
e(E)	7	#4	20'-8"	—
e1(E)	7	#4	18'-11"	—
e2(E)	98	#4	19'-5"	—
e3(E)	28	#4	19'-9"	—
e4(E)	126	#4	18'-0"	—
e5(E)	7	#4	17'-4"	—
e6(E)	7	#4	19'-1"	—
e7(E)	10	#8	34'-3"	—
e8(E)	4	#8	19'-7"	—
e9(E)	10	#8	39'-3"	—
e17(E)	10	#4	32'-10"	—
e18(E)	4	#4	19'-8"	—
e19(E)	10	#4	37'-10"	—
x(E)	142	#5	6'-5"	—
x1(E)	142	#5	4'-1"	—

Reinforcement Bars, Epoxy Coated	Pound	213,430
Concrete Superstructure	Cu. Yds.	792.8
Bridge Deck Grooving	Sq. Yds.	2362

Bars indicated thus 1 x 4-#8 etc. indicates 1 line of bars with 4 lengths per line.

**SUPERSTRUCTURE DETAILS
STRUCTURE NO. 032-0119**

<p>Foth Foth Infrastructure & Environment, LLC 7500 North Harker Drive Peoria, IL 61615 Phone: 309-691-5300 Fax: 309-691-1892 Illinois Registration Number 184,004913</p>	SHEET NO. 11	SECTION	COUNTY	TOTAL SHEETS	SHEET NO.
	33 SHEETS	(32,47-4) HBR-2	GRUNDY	143	72
		S.N. 032-0119	CONTRACT NO. 66873		
		FED. ROAD DIST. NO.	ILLINOIS FED. AID PROJECT		

FILES