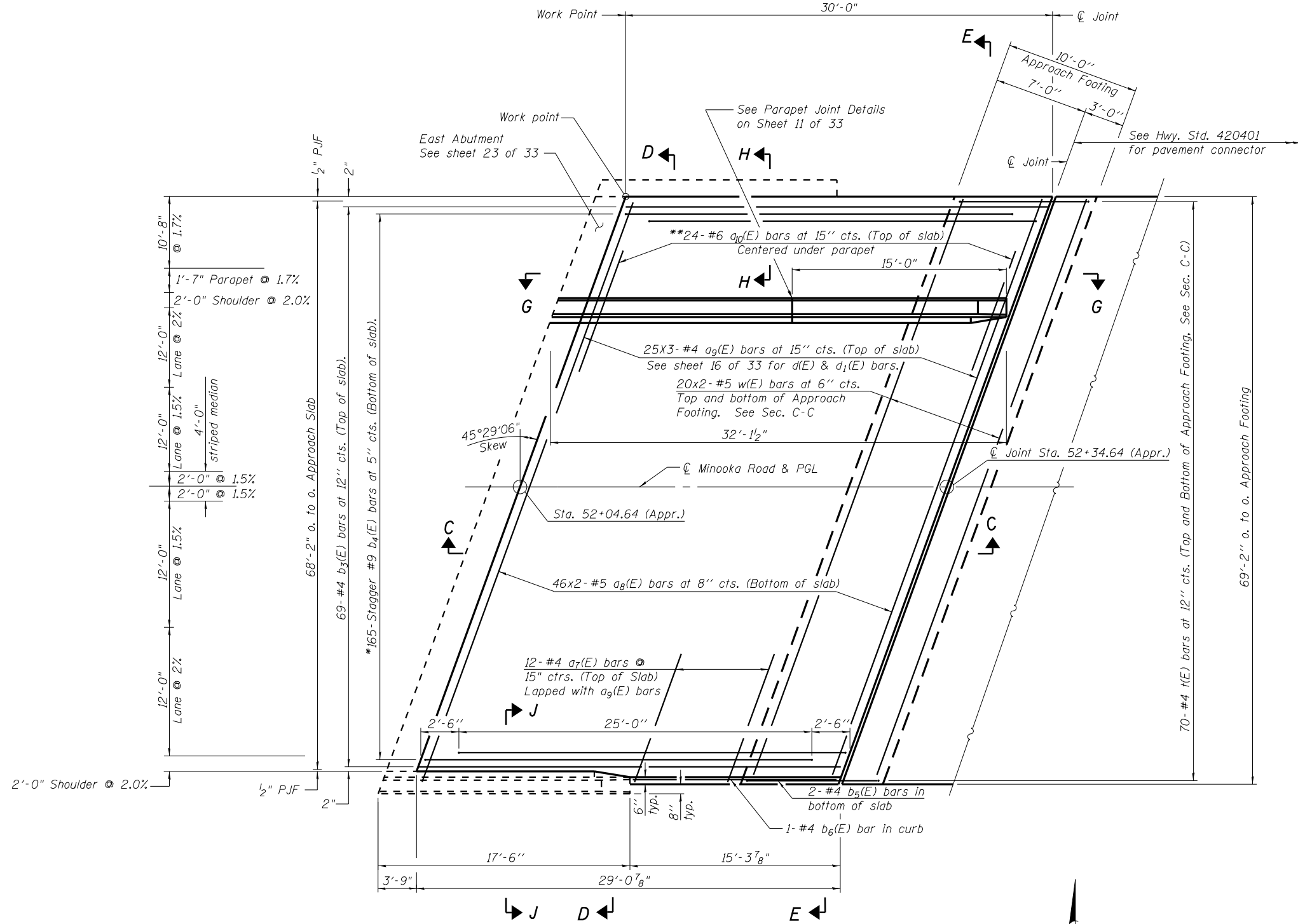
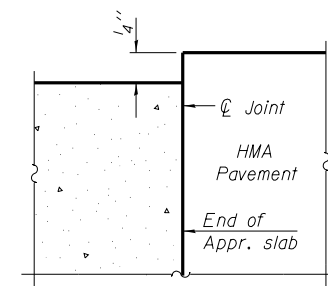


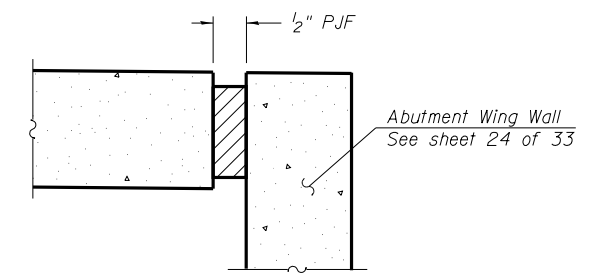
STATE OF ILLINOIS
DEPARTMENT OF TRANSPORTATION



Notes:
See sheet 16 of 33 for Sections C-C, D-D, E-E and View G-G.
 $a_7(E)$, $a_8(E)$, $a_9(E)$, and $w(E)$ bar spacings measured parallel to C.R.



FLEXIBLE PAVEMENT
DETAIL A



VIEW H-H
View J-J similar

Minimum Lap Lengths	
Bar Size	Length
#4	1'-4"
#5	1'-8"

PLAN - EAST APPROACH PAVEMENT

* Tilt #9 $b_4(E)$ bars as required to maintain clearance.
** Alternate with $a_9(E)$ bars.

DESIGNED	- JSI/MAJ/JFS
CHECKED	- JFS/MJB
DRAWN	- MLB/JLP
CHECKED	- JFS/MJB

Foth
Foth Infrastructure & Environment, LLC
7500 North Harker Drive
Peoria, IL 61615
Phone: 309-691-5300 Fax: 309-691-1892
Illinois Registration Number 184,004913

SHEET NO. 15 33 SHEETS	F.A.U. RTE. 400	SECTION (32,47-4) HBR-2	COUNTY GRUNDY	TOTAL SHEETS 143	SHEET NO. 76
	S.N. 032-0119		CONTRACT NO. 66873		
FED. ROAD DIST. NO. _ ILLINOIS FED. AID PROJECT					

(Sheet 2 of 3)

BRIDGE APPROACH SLAB DETAILS
STRUCTURE NO. 032-0119

c:\pwwork\widot\duncan\bd\181369\15-BRIDGE APPROACH SLAB DETAILS.dgn