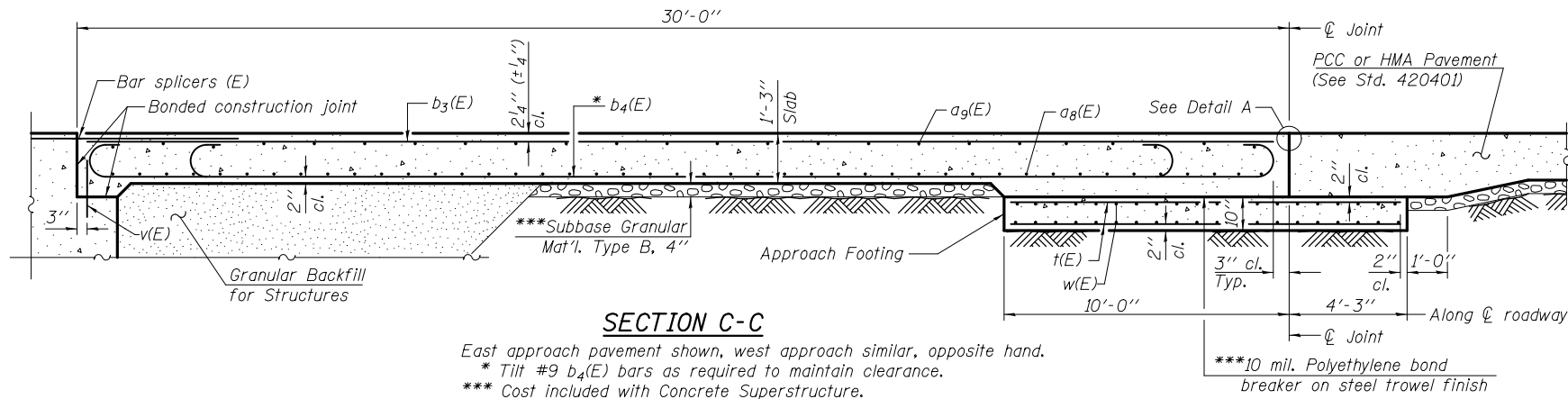
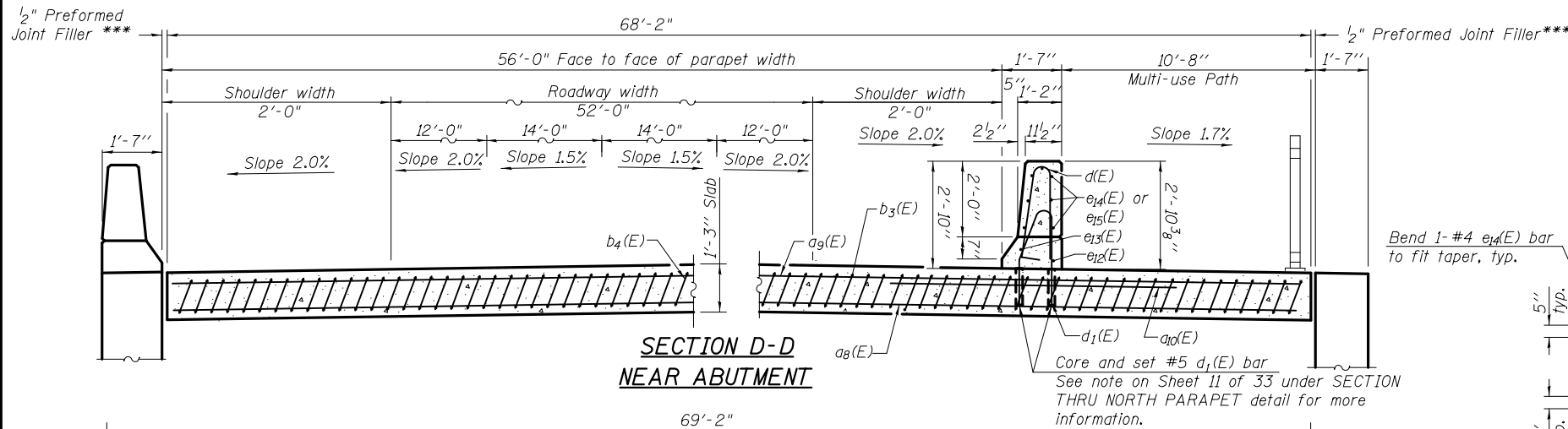
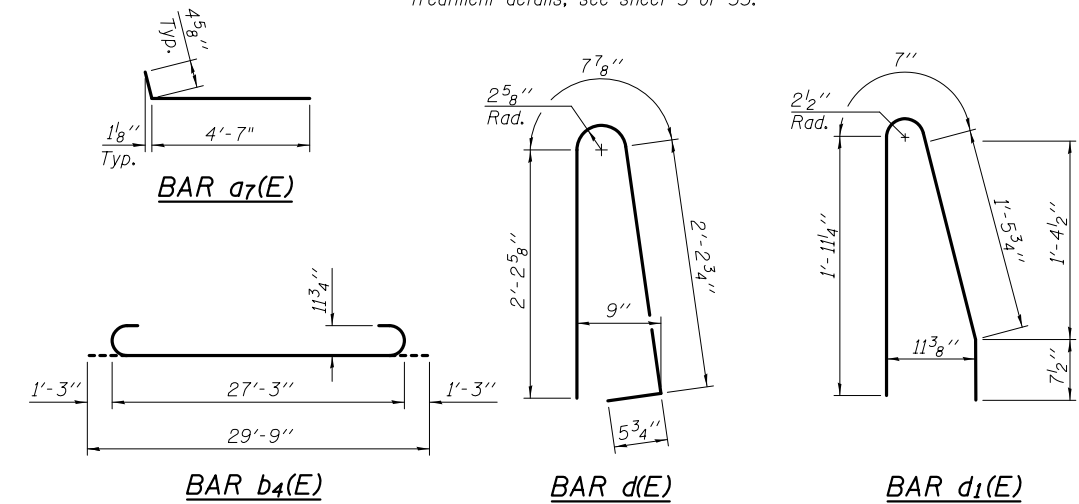


STATE OF ILLINOIS  
DEPARTMENT OF TRANSPORTATION

Notes:  
See sheet 14 & 15 of 33 for Detail A. Approach slab and north parapet concrete shall be paid for as Concrete Superstructure. Approach footing concrete shall be paid for as Concrete Structures. Reinforcement shall be paid for as Reinforcement Bars, Epoxy Coated. For v(E) bar details, see sheets 22 & 23 of 33. The approach footing maximum applied service bearing pressure (Qmax) = 2.0 ksf. For bar splicer details, see sheet 30 of 33. Cost of excavation for approach footing included with Concrete Structures. For Granular Backfill for Structures and drainage treatment details, see sheet 3 of 33.

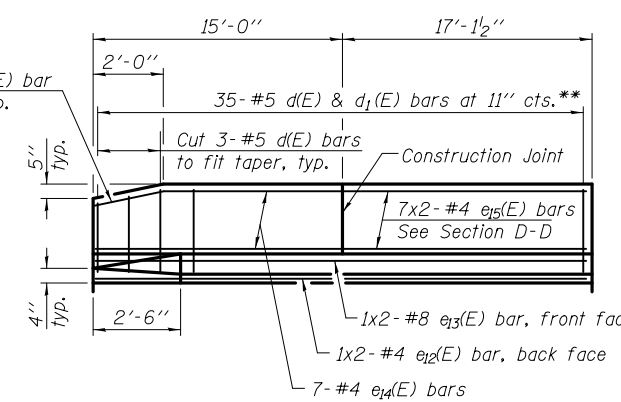


**SECTION C-C**  
East approach pavement shown, west approach similar, opposite hand.  
\* Tilt #9 b<sub>4</sub>(E) bars as required to maintain clearance.  
\*\*\* Cost included with Concrete Superstructure.

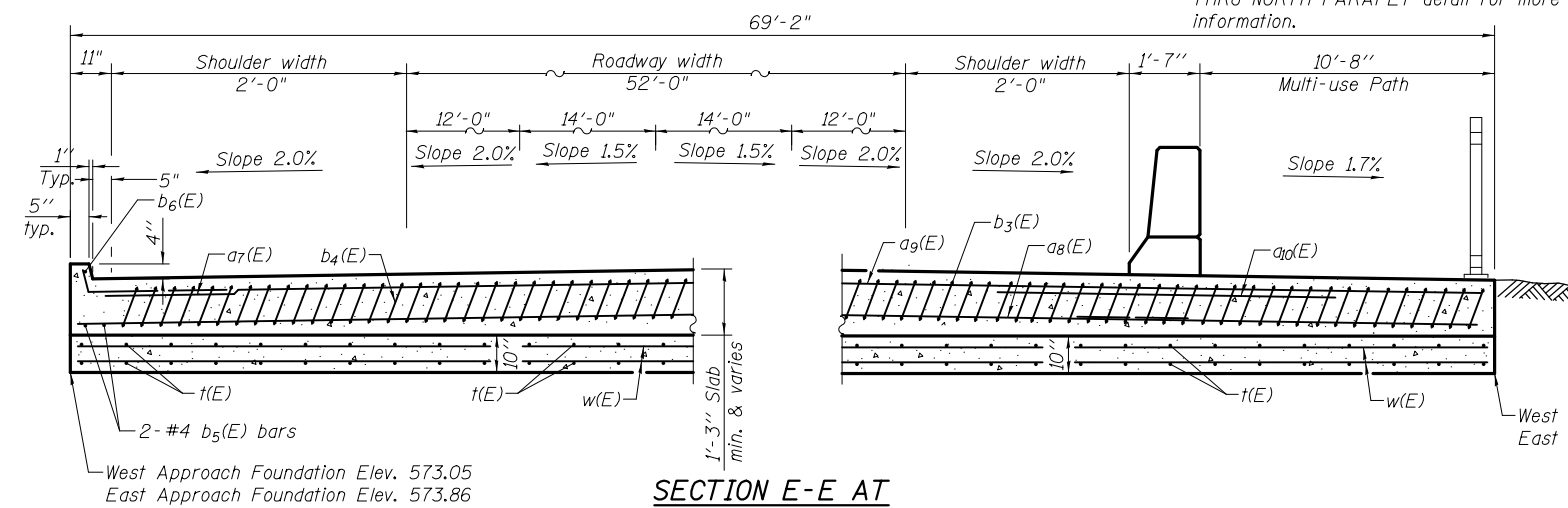


Bend 1-#4 e<sub>4</sub>(E) bar to fit taper, typ.

Core and set #5 d<sub>1</sub>(E) bar  
See note on Sheet 11 of 33 under SECTION THRU NORTH PARAPET detail for more information.



**VIEW G-G - WEST ABUTMENT SHOWN**  
**EAST ABUTMENT IS REVERSED**  
(Looking North at Inside Face)  
\*\*Bend 3-d<sub>1</sub>(E) bars to fit taper.



West Approach Foundation Elev. 574.42  
East Approach Foundation Elev. 571.78

**SECTION E-E AT APPROACH FOOTING**  
(See Plan for dimensions not shown)

**TWO APPROACHES**  
**BILL OF MATERIAL**

Bar	No.	Size	Length	Shape
a <sub>7</sub> (E)	24	#4	5'-0"	U
a <sub>8</sub> (E)	184	#5	50'-0"	—
a <sub>9</sub> (E)	150	#4	33'-8"	—
a <sub>10</sub> (E)	48	#6	10'-6"	—
b <sub>3</sub> (E)	138	#4	29'-8"	—
b <sub>4</sub> (E)	330	#9	29'-9"	U
b <sub>5</sub> (E)	4	#4	14'-8"	—
b <sub>6</sub> (E)	2	#4	14'-3"	—
d(E)	70	#5	5'-7"	T
d <sub>1</sub> (E)	70	#5	4'-8"	T
e <sub>2</sub> (E)	4	#4	16'-7"	—
e <sub>3</sub> (E)	4	#8	17'-8"	—
e <sub>4</sub> (E)	14	#4	14'-8"	—
e <sub>5</sub> (E)	28	#4	9'-2"	—
t(E)	280	#4	13'-11"	—
w(E)	160	#5	50'-0"	—
Concrete Superstructure			Cu. Yd.	235.4
Concrete Structures			Cu. Yd.	60.9
Reinforcement Bars, Epoxy Coated			Pound	62,220

(Sheet 3 of 3)

**BRIDGE APPROACH SLAB DETAILS**  
**STRUCTURE NO. 032-0119**

DESIGNED - JSI/MAJ/JFS
CHECKED - JFS/MJB
DRAWN - MLB/JLP
CHECKED - JFS/MJB

**Foth**  
Foth Infrastructure & Environment, LLC  
7500 North Harker Drive  
Peoria, IL 61615  
Phone: 309-691-5300 Fax: 309-691-1892  
Illinois Registration Number 184.004913

SHEET NO. 16 33 SHEETS	F.A.U. RTE. 400	SECTION (32,47-4) HBR-2	COUNTY GRUNDY	TOTAL SHEETS 143	SHEET NO. 77
	S.N. 032-0119		CONTRACT NO. 66873		
FED. ROAD DIST. NO. _ ILLINOIS FED. AID PROJECT					