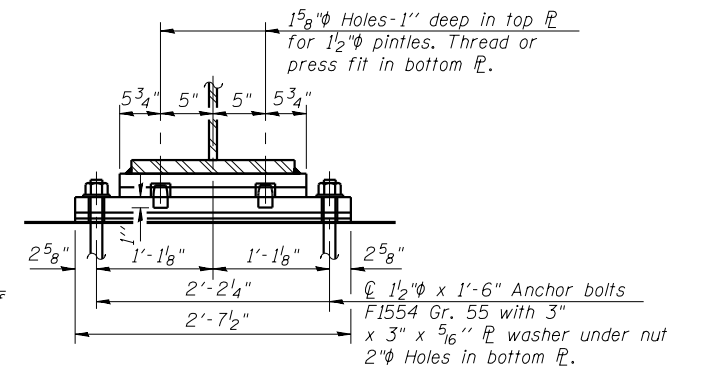
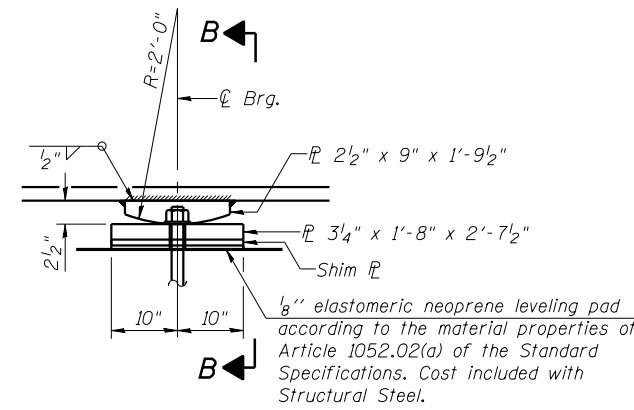
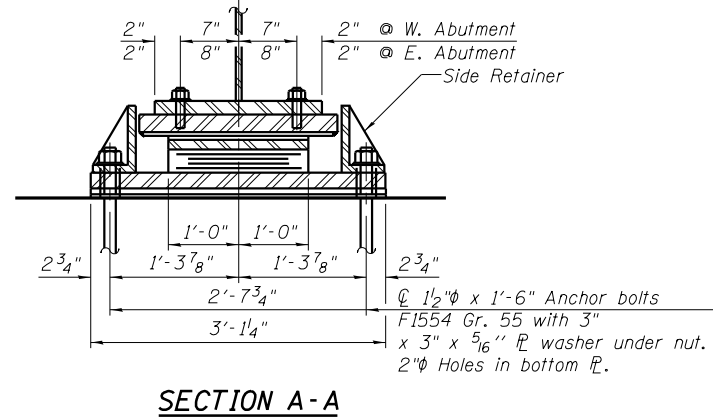
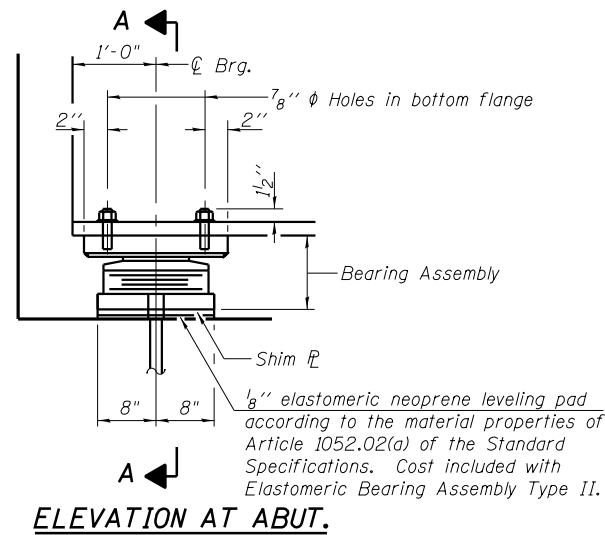
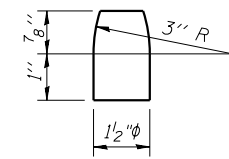
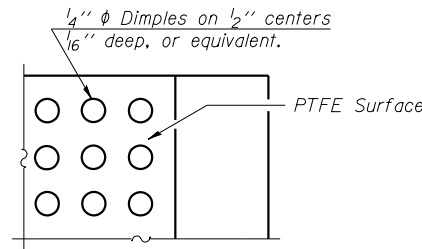
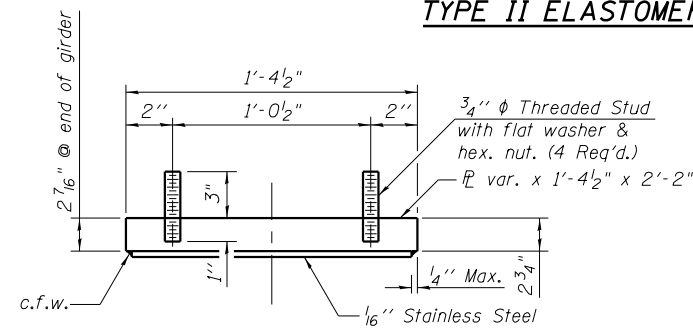


STATE OF ILLINOIS
DEPARTMENT OF TRANSPORTATION

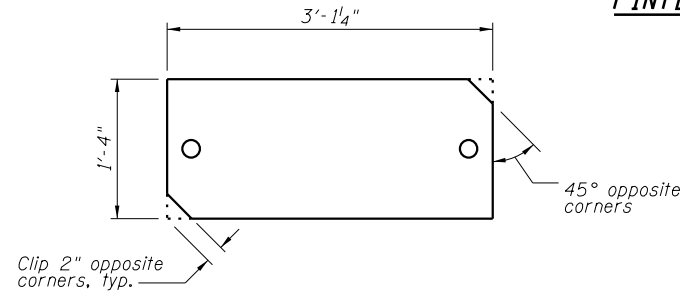
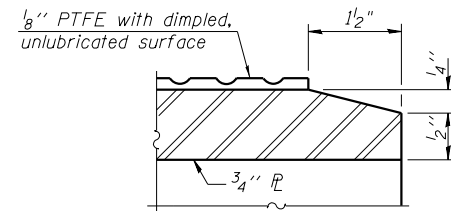
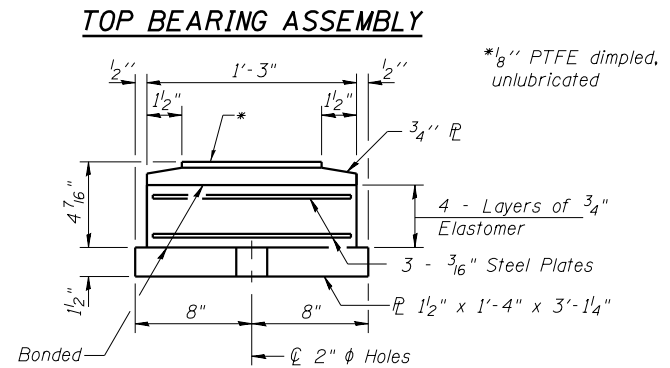


TYPE II ELASTOMERIC EXP. BRG.

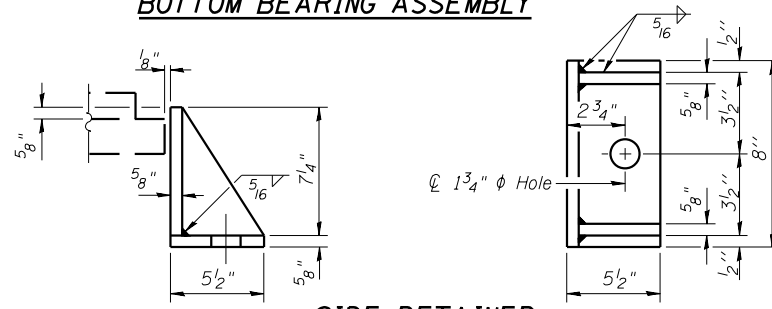


FIXED BEARING

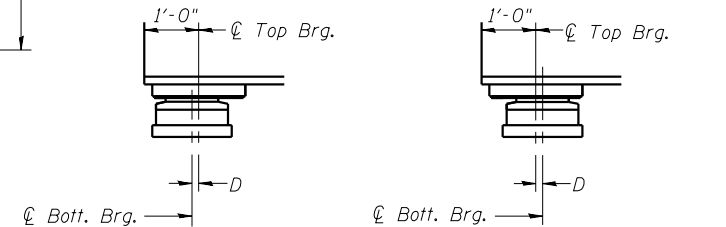
Notes:
Two 1/8 in. adjusting shims shall be provided for each bearing in addition to all other plates or shims and placed as shown on bearing details.
Anchor bolts shall be ASTM F1554 all-thread (or an Engineer-approved alternate material) of the grade(s) and diameter(s) specified. ASTM A307 Grade C anchor bolts may be used in lieu of ASTM F1554 Grade 36 (Fy=36ksi). The corresponding specified grade of AASHTO M314 anchor bolts may be used in lieu of ASTM F1554.
Anchor bolts at fixed bearings may be either cast in place or installed in holes drilled after the supported member is in place.
Anchor bolts for Type II bearings shall be placed in holes drilled in the concrete through holes in the bottom bearing plate after members are in place. Side retainers shall be placed after bolts are installed.
Drilled and set anchor bolts shall be installed according to Article 521.06 of the Standard Specifications.
Side retainers and other steel members required for the bearing assembly shall be included in the cost of Elastomeric Bearing Assembly, Type II.
The 1/8" PTFE sheet shall be bonded directly to the top steel plate with a two-component, medium viscosity epoxy resin, conforming to the requirements of the Federal Specification MMM-A-134, Type I. The bond agent shall be applied on the full area of the contact surfaces.
Bonding of 1/8" PTFE sheet during vulcanizing process will be permitted provided the process and method of adjusting assembly height is approved by the Engineer.
All Bearing Plates and Pintles shall be AASHTO M270, Grade 50.



BOTTOM BEARING ASSEMBLY



Equivalent rolled angle with stiffeners will be allowed in lieu of welded plates.



BELOW 50°F. ABOVE 50°F.
(Move bott. brg. away from fixed brg.) (Move bott. brg. toward fixed brg.)

SETTING ANCHOR BOLTS AT EXP. BRG.

D=1/8" per each 100' of expansion for every 15° temp. change from the normal temp. of 50°F.

Beam	SHIM PLATES (include in weight of steel)		
	PLATE THICKNESS (inches)		
	West Abutment	East Abutment	Pier
1	---	---	---
2	1/8	---	---
3	3/8	---	---
4	1/2	---	---
5	7/8	---	---
6	---	---	1/2
7	---	1/2	---
8	---	---	---
9	---	---	---

BILL OF MATERIAL

Item	Unit	Total
Elastomeric Bearing Assembly Type II	Each	18
Anchor Bolts, 1 1/2"	Each	54

**BEARING DETAILS
STRUCTURE NO. 032-0119**

DESIGNED - JSI/MAJ/JFS
CHECKED - JFS/MJB
DRAWN - MLB/JLP
CHECKED - JFS/MJB

Foth
Foth Infrastructure & Environment, LLC
7500 North Harker Drive
Peoria, IL 61615
Phone: 309-691-5300 Fax: 309-691-1892
Illinois Registration Number 184.004913

SHEET NO. 21	F.A.U. RTE. 400	SECTION (32,47-4) HBR-2	COUNTY GRUNDY	TOTAL SHEETS 143	SHEET NO. 82
33 SHEETS	S.N. 032-0119		CONTRACT NO. 66873		
FED. ROAD DIST. NO.		ILLINOIS FED. AID PROJECT			

c:\pw_work\widot\duncan\bd018136921-BEARING DETAILS.dgn