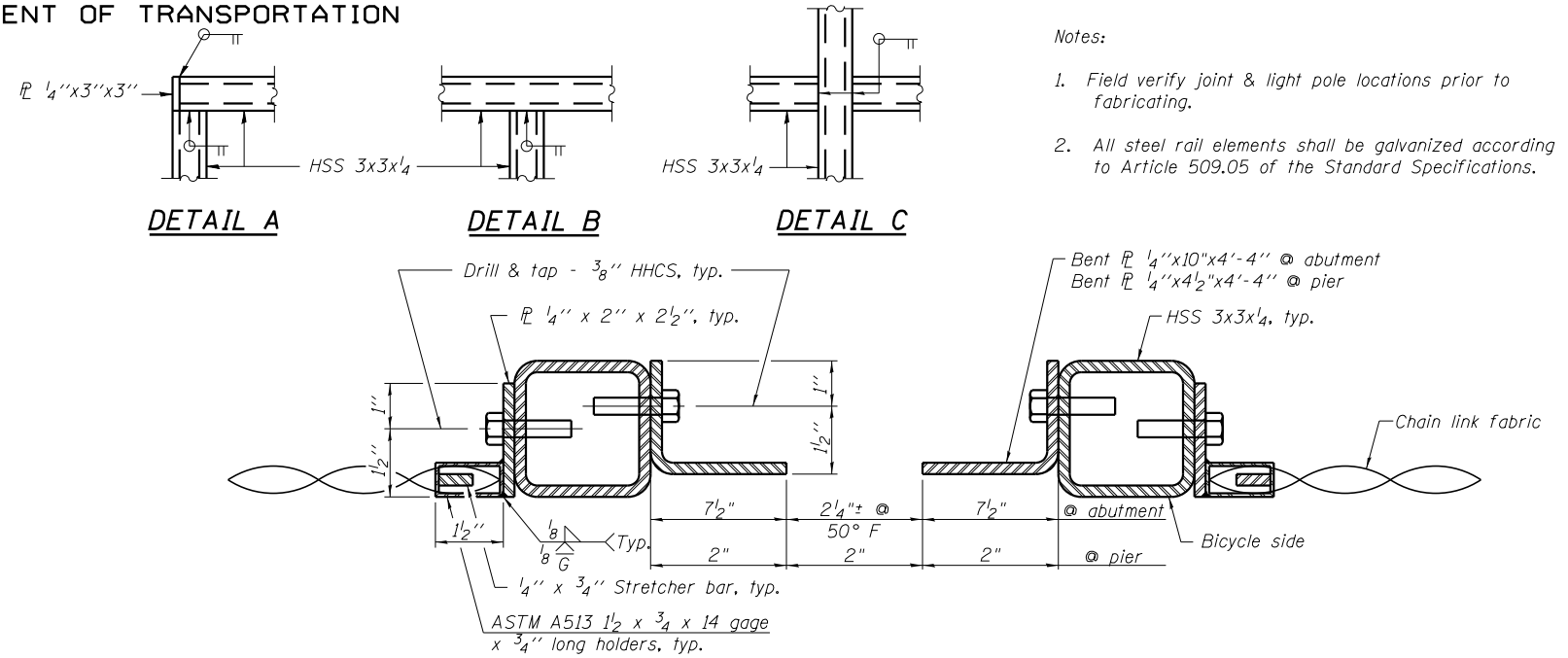
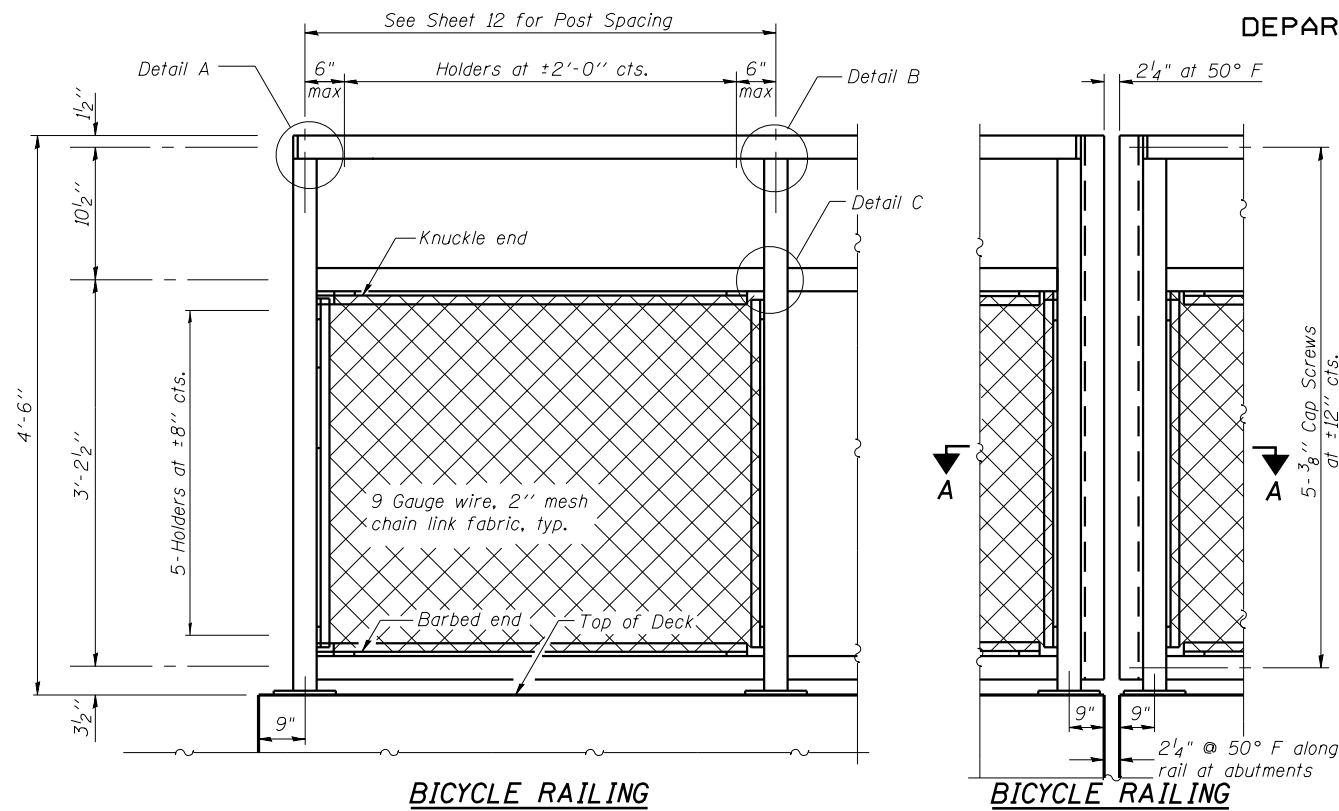
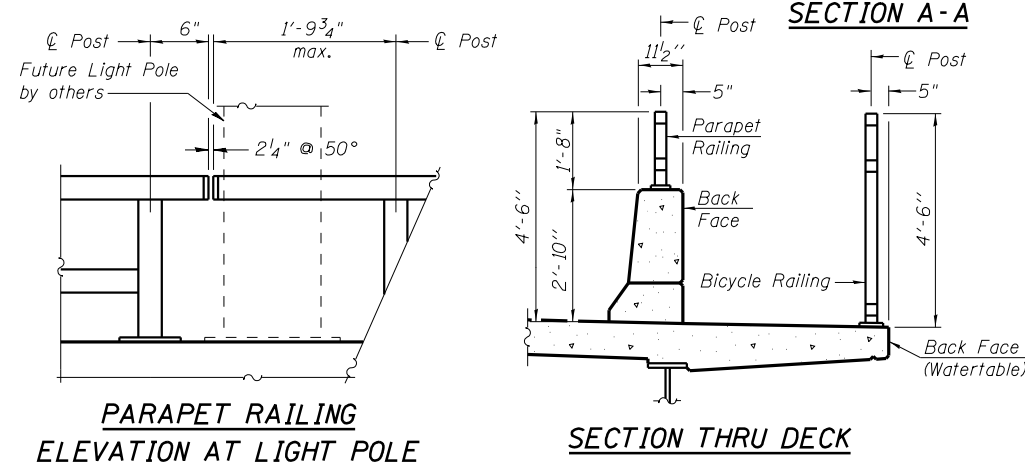


STATE OF ILLINOIS
DEPARTMENT OF TRANSPORTATION

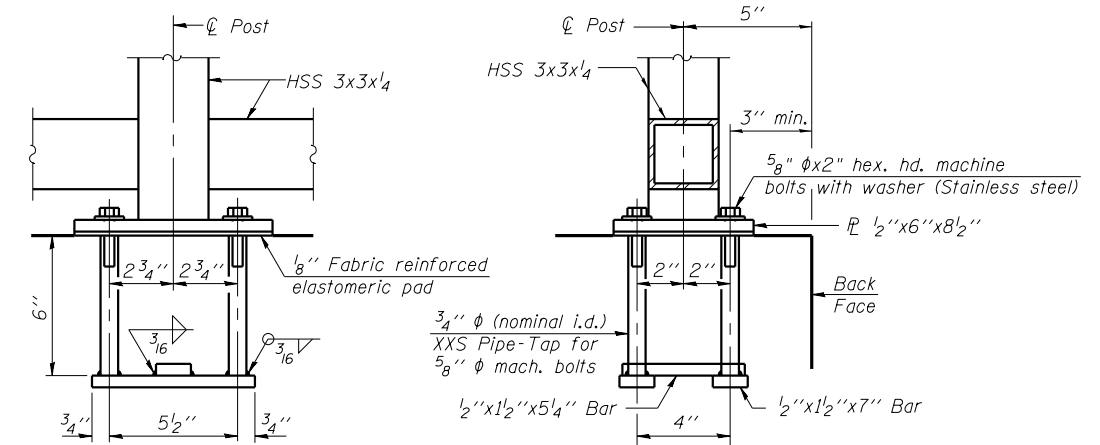
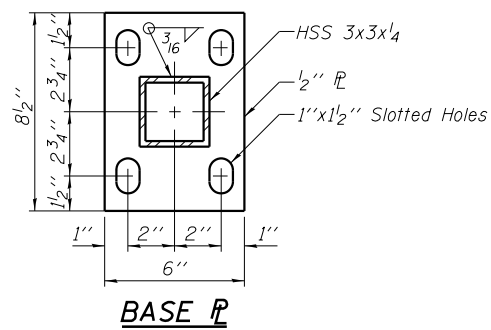
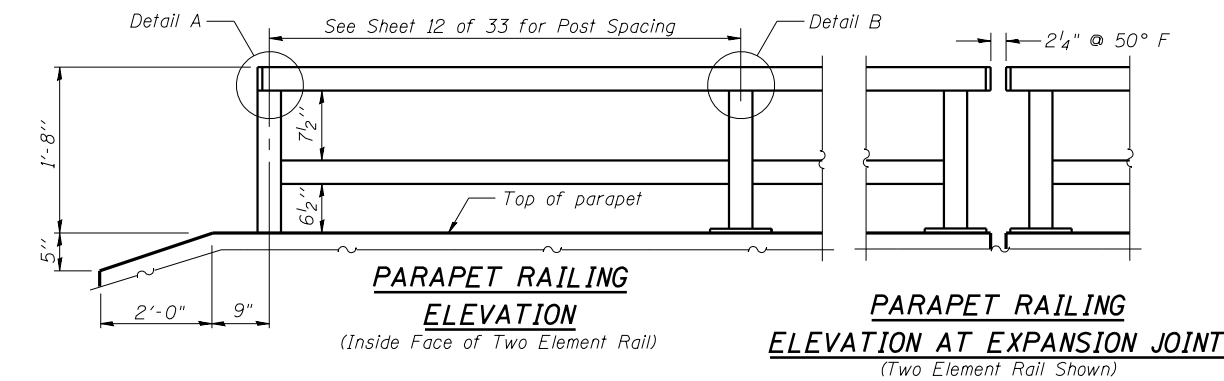


- Notes:
1. Field verify joint & light pole locations prior to fabricating.
 2. All steel rail elements shall be galvanized according to Article 509.05 of the Standard Specifications.



BILL OF MATERIAL

Item	Unit	Quantity
Bicycle Railing	Foot	445
Parapet Railing	Foot	437

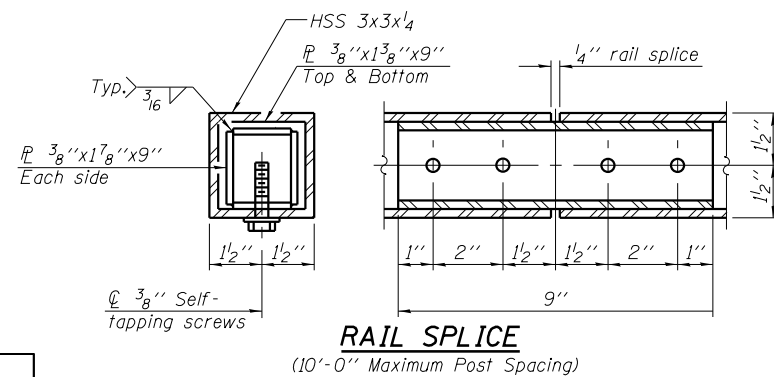


ANCHOR BOLT DETAILS

In lieu of the cast-in-place anchor device shown, the Contractor has the option of drilling and setting 5/8" φ anchor rods according to Article 509.06 of the Standard Specifications. Embedment shall be according to the manufacturer's specifications.

BICYCLE RAILING STRUCTURE NO. 032-0119

DESIGNED	- JSI/MAJ/JFS
CHECKED	- JFS/MJB
DRAWN	- MLB/JLP
CHECKED	- JFS/MJB



Foth Infrastructure & Environment, LLC
7500 North Harker Drive
Peoria, IL 61615
Phone: 309-691-5300 Fax: 309-691-1892
Illinois Registration Number 184,004913

SHEET NO. 27	F.A.U RTE.	SECTION	COUNTY	TOTAL SHEETS	SHEET NO.
33 SHEETS	400	(32,47-4) HBR-2	GRUNDY	143	88
S.N. 032-0119			CONTRACT NO. 66873		
FED. ROAD DIST. NO.		ILLINOIS FED. AID PROJECT			