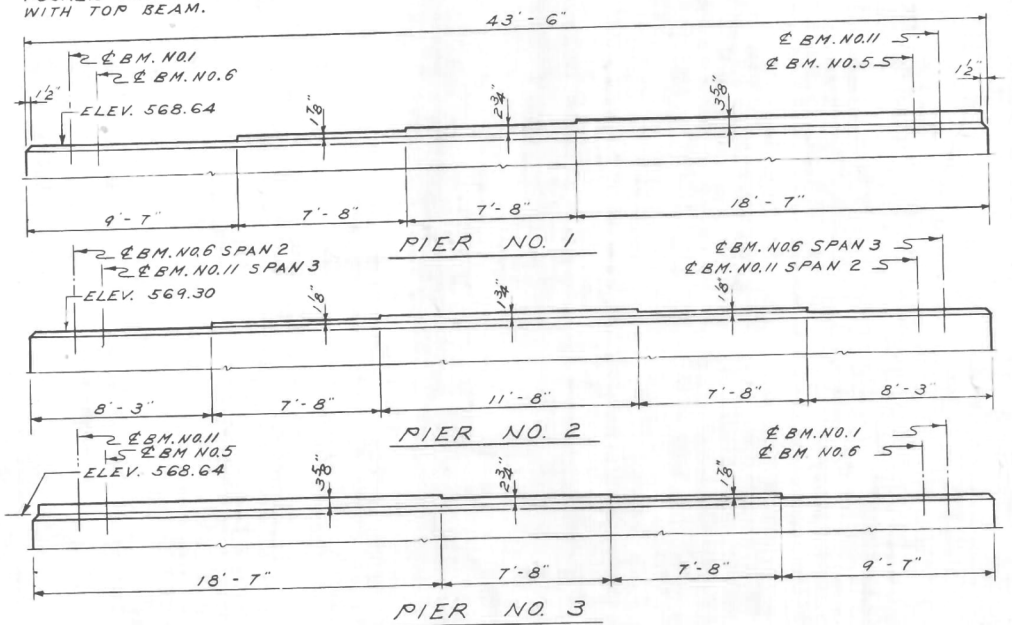


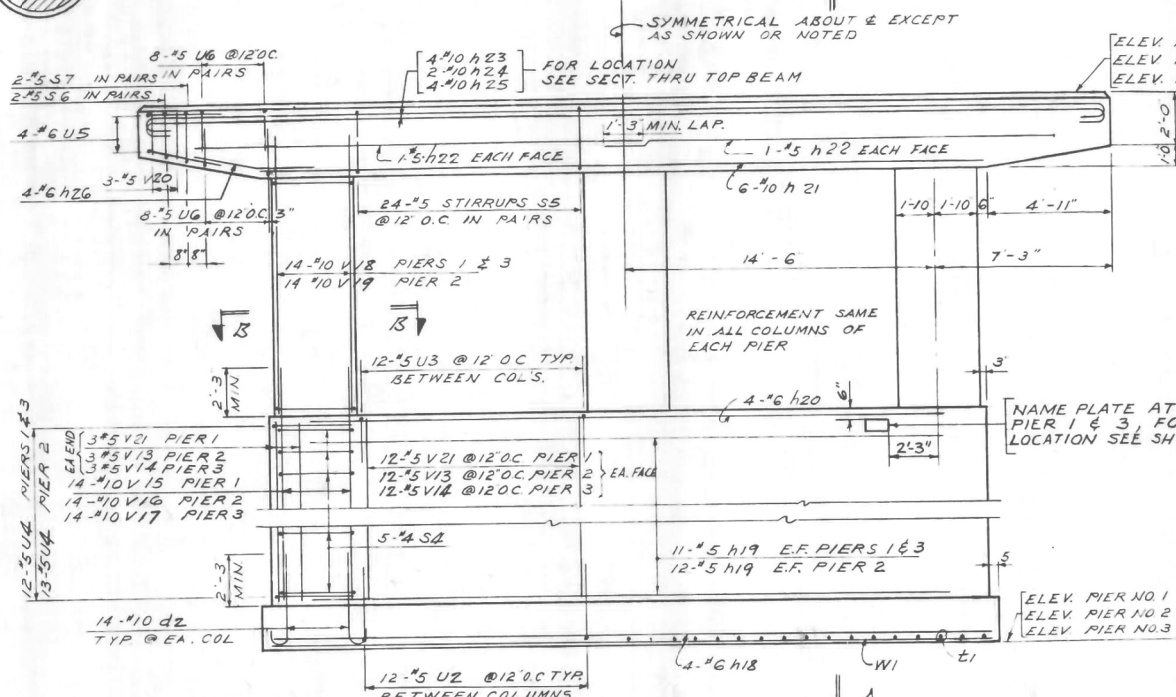
TOP PLAN OF PIER NO. 1
 (PIER NO. 3 SIMILAR BY ROTATION OF 180°)
 SCALE 1/4" = 1'-0"

TOP PLAN OF PIER NO. 2
 SCALE 1/4" = 1'-0"

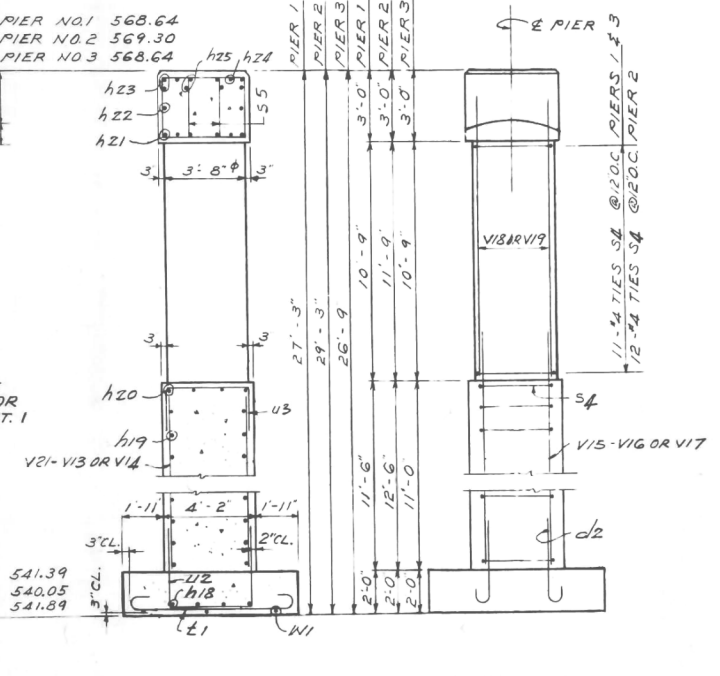
NOTE:
 PEDESTAL STEPS TO BE
 ROURED MONOLITHICALLY
 WITH TOP BEAM.



ELEVATION OF PEDESTAL STEPS
 SCALE 1/4" = 1'-0"



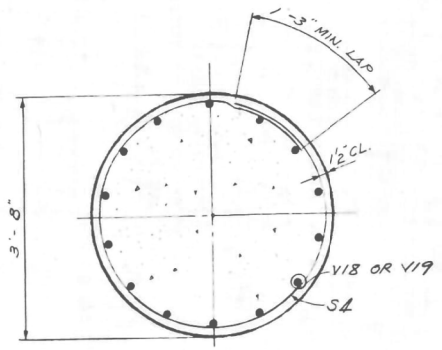
ELEVATION
 SCALE 1/4" = 1'-0"



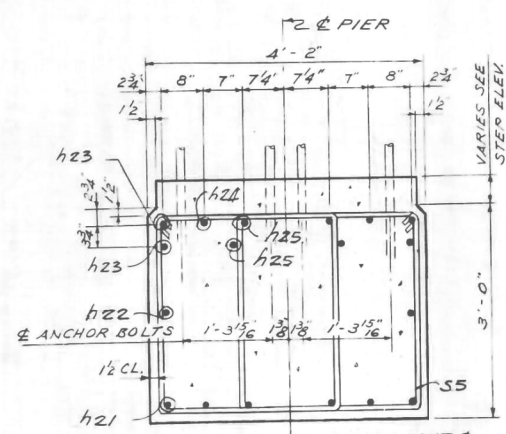
SECTION A-A
 SCALE 1/4" = 1'-0"

END VIEW
 SCALE 1/4" = 1'-0"

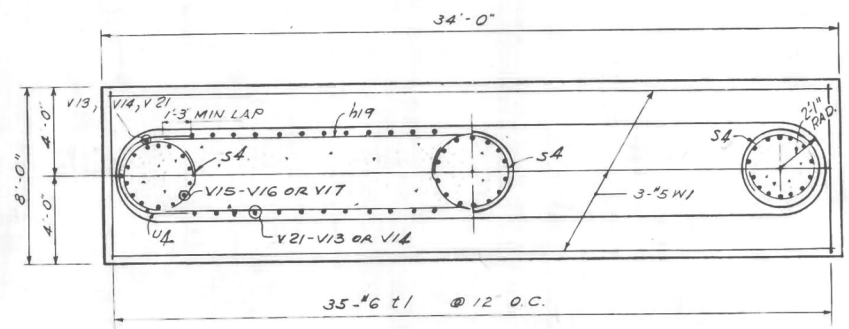
NOTE:
 SPACE REINFORCEMENT IN TOP
 BEAM TO AVOID INTERFERENCE WITH
 DRILLING OF HOLES FOR ANCHOR BOLTS.



SECTION B-B
 SCALE 3/4" = 1'-0"



SECTION
 THRU TOP BEAM
 SCALE 3/4" = 1'-0"



HALF SECTION HALF PLAN
 FOOTING PLAN
 SCALE 1/4" = 1'-0"

BILL OF MATERIAL

ITEM	UNIT	QUANTITY		
		PIER 1	PIER 2	PIER 3
CLASS X CONCRETE	CU. YDS.	110.4	115.7	107.9
REINFORCEMENT BARS	LBS.	12,960	13,480	12,840
CLASS A EXCAVATION FOR STRUCTURES	CU. YDS.	197	217	186

PIERS 1, 2 AND 3
 GRADE SEPARATION
 CROSS ROAD
 OVER F.A.I. ROUTE 80
 F.A. PROJECT
 F.A.I. ROUTE 80 SECTION (32,47)-4
 GRUNDY-KENDALL COUNTY
 STATION 1574+07.48

ALFRED BENESCH & ASSOCIATES CONSULTING ENGINEERS
 10 SOUTH WABASH AVENUE 602 CHICAGO, ILLINOIS

FILE NAME =	USER NAME = duncanbd	DESIGNED -	REVISED -
et:\pw\work\p1dot\duncanbd\dms58037\ep01904-sht-F10.dgn		DRAWN -	REVISED -
		CHECKED -	REVISED -
		DATE -	REVISED -

STATE OF ILLINOIS
 DEPARTMENT OF TRANSPORTATION

FOR INFORMATION ONLY
 EXISTING SN 032-0046

SCALE: SHEET 7 OF 7 SHEETS STA. TO STA.

F.A.I. RTE.	SECTION	COUNTY	TOTAL SHEETS	SHEET NO.
80	(32,47)-4HBR-2	GRUNDY	143	101
CONTRACT NO. 66873				
ILLINOIS FED. AID PROJECT				