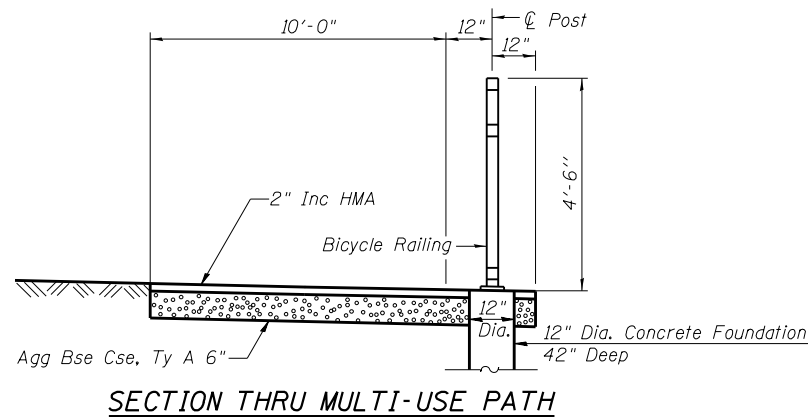
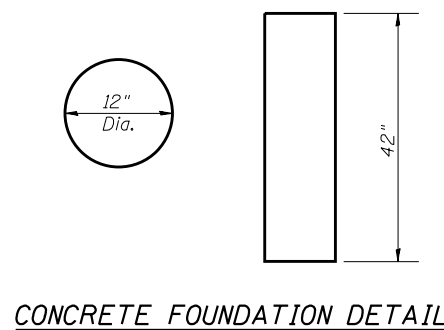
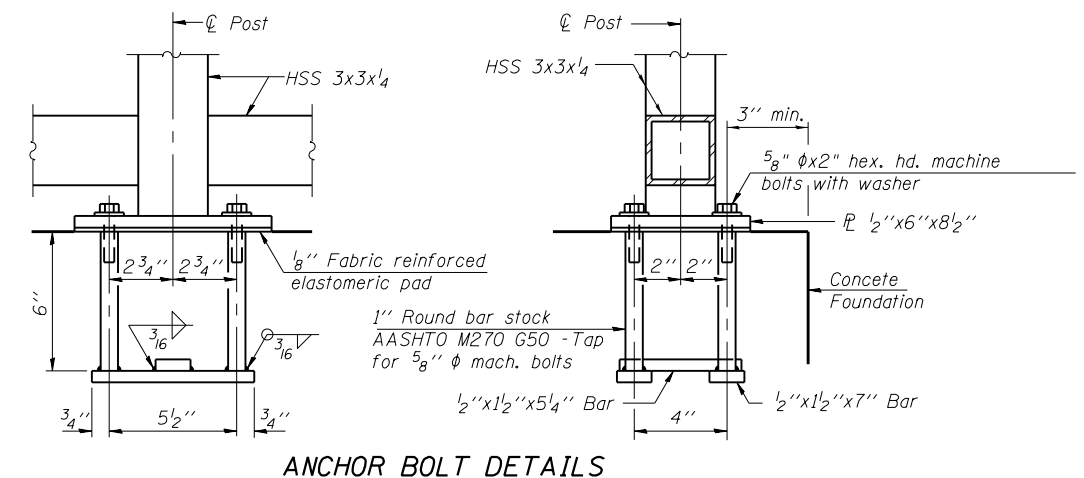
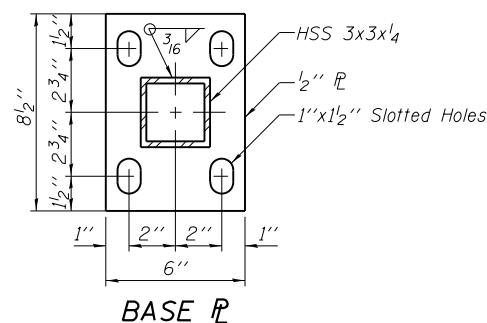
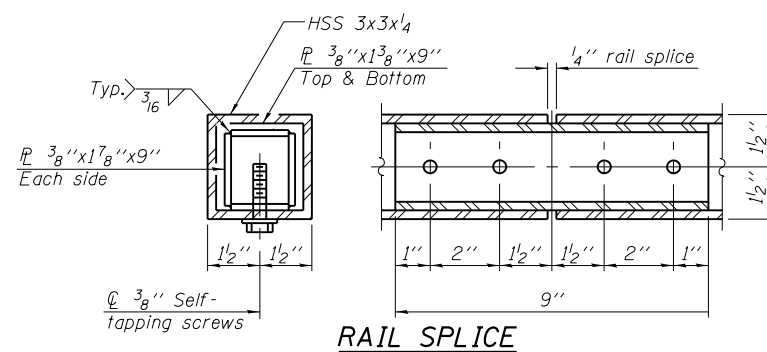


- Notes:
1. Field verify joint & light pole locations prior to fabricating.
  2. All steel rail elements shall be galvanized according to Article 509.05 of the Standard Specifications.
  3. All labor, equipment and materials necessary to furnish and install the concrete foundations for the Bicycle Railing posts shall be included in the contract unit price for BICYCLE RAILING.



**BILL OF MATERIAL**

Item	Unit	Quantity
Bicycle Railing	Foot	445



**ANCHOR BOLT DETAILS**  
 In lieu of the cast-in-place anchor device shown, the Contractor has the option of drilling and setting 5/8"  $\phi$  anchor rods according to Article 509.06 of the Standard Specifications. Embedment shall be according to the manufacturer's specifications.

FILE NAME =	USER NAME = duncanbd	DESIGNED -	REVISED -
ca:\pwwork\pwwork\duncanbd\dms58037\EP0904-sht-details.dgn		DRAWN -	REVISED -
		CHECKED -	REVISED -
		DATE -	REVISED -

**STATE OF ILLINOIS  
 DEPARTMENT OF TRANSPORTATION**

<b>BICYCLE RAILING DETAILS</b>				
SCALE:	SHEET NO.	OF SHEETS	STA.	TO STA.

F.A.I. RE.	SECTION	COUNTY	TOTAL SHEETS	SHEET NO.
80	(32,47-4)HBR-2	GRUNDY	143	105
CONTRACT NO. 66873				
ILLINOIS FED. AID PROJECT				