

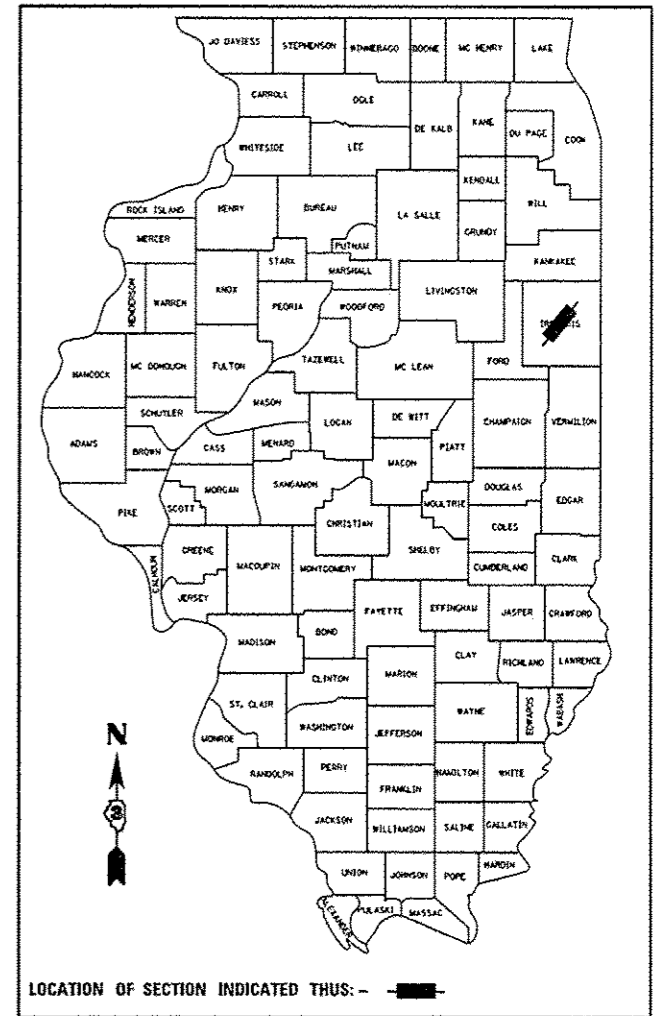
F.A.I. RTE.	SECTION	COUNTY	TOTAL SHEETS	SHEET NO.
57	(38-2)HVBR, HVBR-1	IROQUOIS	146	1
		ILLINOIS	CONTRACT NO. 66942	

STATE OF ILLINOIS
DEPARTMENT OF TRANSPORTATION
DIVISION OF HIGHWAYS

PROPOSED HIGHWAY PLANS

**FAI ROUTE 57 (I-57)
SECTION (38-2)HVBR, HVBR-1
PROJECT: NHPP-0057(302)
SUPERSTRUCTURE REPLACEMENT
IROQUOIS COUNTY**

P-93-041-00
D-93-061-09



LOCATION OF SECTION INDICATED THUS:

FUNCTIONAL CLASSIFICATION
RURAL INTERSTATE
2011 ADT = 20,400
P.V. = 77% S.U. = 4% M.U. = 19%

INDEX OF SHEETS

- 1 COVER SHEET
- 2 GENERAL NOTES AND STANDARDS
- 3-9 SUMMARY OF QUANTITIES
- 10-12 TYPICAL SECTIONS
- 13-16 SCHEDULES OF QUANTITIES
- 17 ALIGNMENT, TIES & BENCHMARKS
- 18 REMOVAL PLAN
- 19-21 PLAN & PROFILE
- 22 GENERAL STAGING NOTES, SEQUENCE OF CONSTRUCTION, AND MAINTENANCE OF TRAFFIC TYPICAL SECTIONS
- 23-26 MAINTENANCE OF TRAFFIC PLAN
- 27 MAINTENANCE OF TRAFFIC STANDARD 701400 (SPECIAL)
- 28-29 EROSION CONTROL PLAN
- 30 SEEDING PLAN
- 31 DRAINAGE AND UTILITY PLAN
- 32-35 PAVEMENT MARKING PLAN
- 36-39 DETAILS
- 40-110 STRUCTURE PLANS (038-0013 & 038-0014)
- 111-130 EXISTING STRUCTURE PLANS (038-0013 & 038-0014)
- 131-146 CROSS SECTIONS

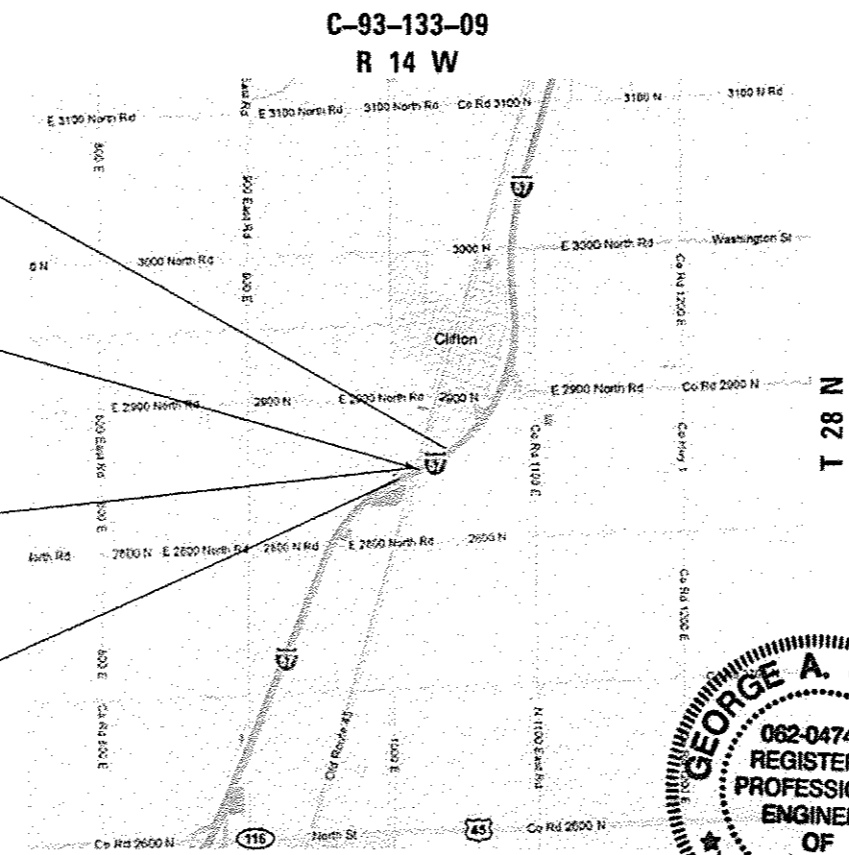
HIGHWAY STANDARDS
SEE SHEET NO. 2

PROJECT START
STATION 1033 + 00

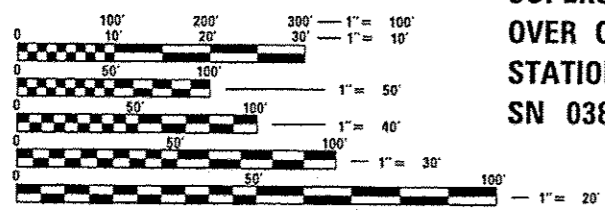
SUPERSTRUCTURE REPLACEMENT
OVER OLD ROUTE 45
STATION 1037 + 61.38
SN 038-0013(N.B.), 373' LONG

SUPERSTRUCTURE REPLACEMENT
OVER OLD ROUTE 45
STATION 1037 + 61.38
SN 038-0014(S.B.), 373' LONG

PROJECT END
STATION 1043 + 50



LOCATION MAP
NOT TO SCALE



FULL SIZE PLANS HAVE BEEN PREPARED USING STANDARD ENGINEERING SCALES. REDUCED SIZED PLANS WILL NOT CONFORM TO STANDARD SCALES. IN MAKING MEASUREMENTS ON REDUCED PLANS, THE ABOVE SCALES MAY BE USED.

J.U.L.I.E.
JOINT UTILITY LOCATION INFORMATION FOR EXCAVATION
1-800-892-0123
OR 811

STATION EQUATION
STA 1043 + 81.57 BK = STA 1043 + 84.27 AH

GROSS LENGTH = 1050.00 FT. = 0.199 MILE
NET LENGTH = 1050.00 FT. = 0.199 MILE

GEORGE A. GHAREEB
062-047473
REGISTERED PROFESSIONAL ENGINEER
OF ILLINOIS
8/22/2012

TERRA ENGINEERING LTD.
401 Main Street, Suite 1130
Peoria, IL 61602
(309)999-0123

STATE OF ILLINOIS
DEPARTMENT OF TRANSPORTATION
DIVISION OF HIGHWAYS

SUBMITTED 8/27 2012
E. J. K.
DEPUTY DIRECTOR OF HIGHWAYS, REGION ENGINEER

May 10 2013
John D. Baranzelli, P.E.
ENGINEER OF DESIGN AND ENVIRONMENT

May 10 2013
Chris A. Mann, P.E.
DIRECTOR OF HIGHWAYS, CHIEF ENGINEER

PRINTED BY THE AUTHORITY
OF THE STATE OF ILLINOIS

I:\Projects\199-228-1001-157_Bridges-PTB_153-370-D-Avings\1500_Sheets\0386942-akt-cover.dgn
11/30/2012 4:47:49 PM
P:\Projects\199-228-1001-157_Bridges-PTB_153-370-D-Avings\1500_Sheets\0386942-akt-cover.dgn
I:\Projects\199-228-1001-157_Bridges-PTB_153-370-D-Avings\1500_Sheets\0386942-akt-cover.dgn
I:\Projects\199-228-1001-157_Bridges-PTB_153-370-D-Avings\1500_Sheets\0386942-akt-cover.dgn