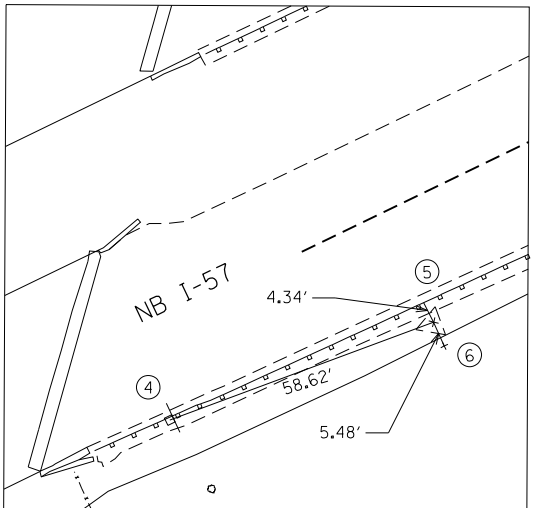


**CONTROL POINT #1**

CONTROL POINT #1 IS A IRON SPIKE ON THE NORTH SHOULDER OF THE SOUTHBOUND LANE OF I-57.

N = 1549993.481  
E = 1093380.465

1. SET SPIKE IN GRASS
2. REFLECTOR POST
3. GUARDRAIL FOR S.B. LANE

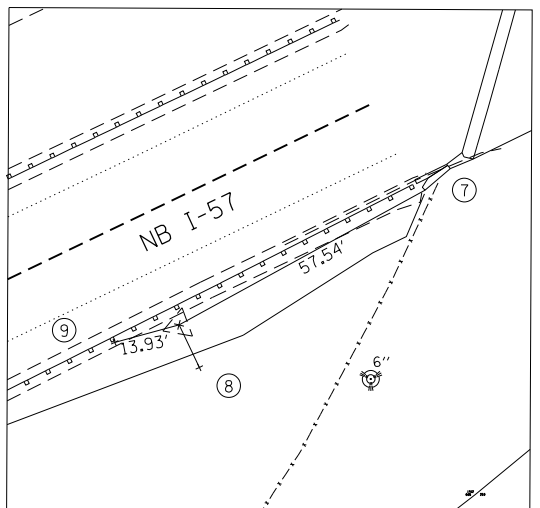


**CONTROL POINT #2**

CONTROL POINT #2 IS A IRON SPIKE ON THE SOUTH SHOULDER OF THE NORTHBOUND LANE OF I-57

N = 1549793.813  
E = 1093254.620

4. REFLECTOR POST
5. GUARDRAIL FOR N.B. LANE
6. SET SPIKE IN GRASS

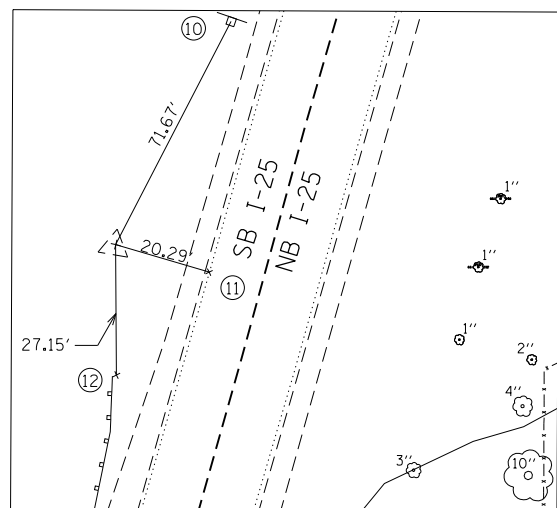


**CONTROL POINT #4**

CONTROL POINT #4 IS A METAL SPIKE ON THE SOUTH SHOULDER OF THE NORTHBOUND LANE OF I-57

N = 1549572.078  
E = 1092778.988

7. SE CORNER OF ABUTMENT
8. REBAR WITH YELLOW CAP
9. MAG NAIL IN SHOULDER BY GUARDRAIL

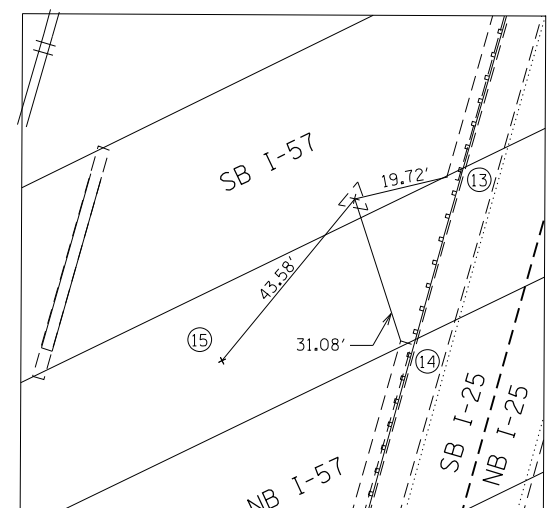


**CONTROL POINT #6**

CONTROL POINT #6 IS A IRON SPIKE ON THE WEST SHOULDER OF SOUTHBOUND I-25

N = 1550005.374  
E = 1093120.431

10. "CURVE" SIGN
11. MAG NAIL IN W.B. WHITE STRIPE
12. R.R. SPIKE IN GUARDRAIL POST



**CONTROL POINT #7**

CONTROL POINT #7 IS A IRON SPIKE UNDER THE SOUTHBOUND BRIDGE OF I-57 WEST OF THE SOUTHBOUND LANE OF I-25

N = 1549785.282  
E = 1093050.039

13. WESTERN COLUMN UNDER BRIDGE FOR S.B. I-57
14. EASTERN COLUMN UNDER BRIDGE FOR N.B. I-57
15. SPIKE AT STA. 1037+61.38



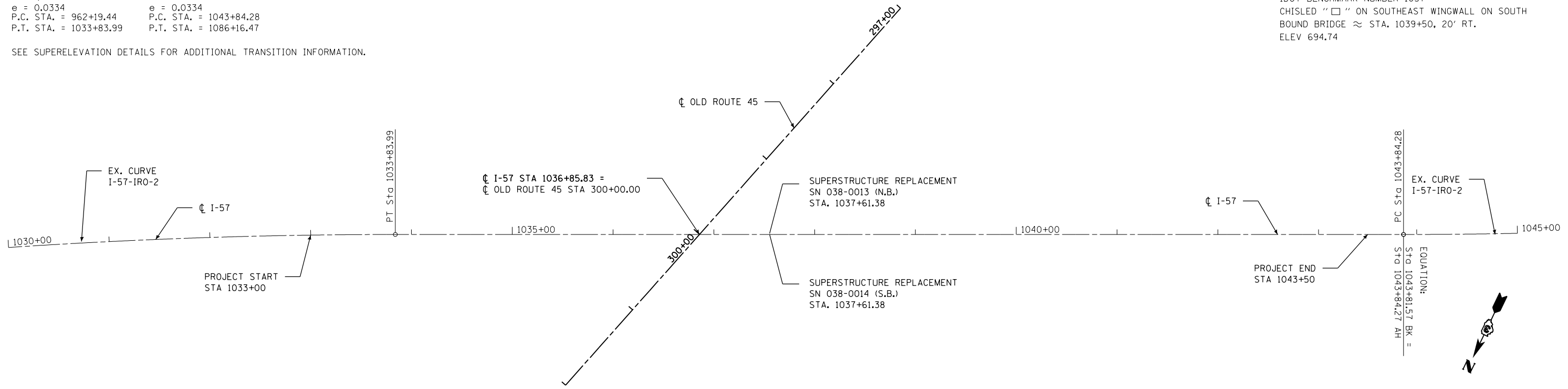
EXIST. CURVE I57I-2  
PI STA. = 1003+55.60  
Δ = 71° 40' 01" (RT)  
D = 1° 00' 01"  
R = 5,727.86'  
T = 4,136.16'  
L = 7,164.55'  
E = 1,337.28'  
e = 0.0334  
P.C. STA. = 962+19.44  
P.T. STA. = 1033+83.99

EXIST. CURVE I57I-3  
PI STA. = 1066+02.13  
Δ = 42° 19' 11" (LT)  
D = 1° 00' 00"  
R = 5,729.88'  
T = 2,217.85'  
L = 4,232.19'  
E = 414.26'  
e = 0.0334  
P.C. STA. = 1043+84.28  
P.T. STA. = 1086+16.47

SEE SUPERELEVATION DETAILS FOR ADDITIONAL TRANSITION INFORMATION.

IDOT BENCHMARK NUMBER 1034  
EXISTING CHISLED "□" ON NORTH ABUTMENT ON SOUTH BOUND BRIDGE ≈ STA. 1035+29, 35' RT.  
ELEV = 693.40

IDOT BENCHMARK NUMBER 1037  
CHISLED "□" ON SOUTHEAST WINGWALL ON SOUTH BOUND BRIDGE ≈ STA. 1039+50, 20' RT.  
ELEV 694.74



USER NAME = WAH	DESIGNED -	REVISED -
PLOT SCALE = 48.0000' / in.	DRAWN -	REVISED -
PLOT DATE = 8/21/2012	CHECKED -	REVISED -
	DATE -	REVISED -

**STATE OF ILLINOIS  
DEPARTMENT OF TRANSPORTATION**

**ALIGNMENT, TIES AND BENCHMARKS  
I-57 OVER OLD ROUTE 45 AND ILLINOIS CENTRAL RAILROAD**

SCALE: SHEET NO. 1 OF 1 SHEETS STA. TO STA.

F.A.I. RTE.	SECTION	COUNTY	TOTAL SHEETS	SHEET NO.
57	(38-2)HBVR, HVBR-1	IROQUOIS	146	17
CONTRACT NO. 66942				
ILLINOIS FED. AID PROJECT				