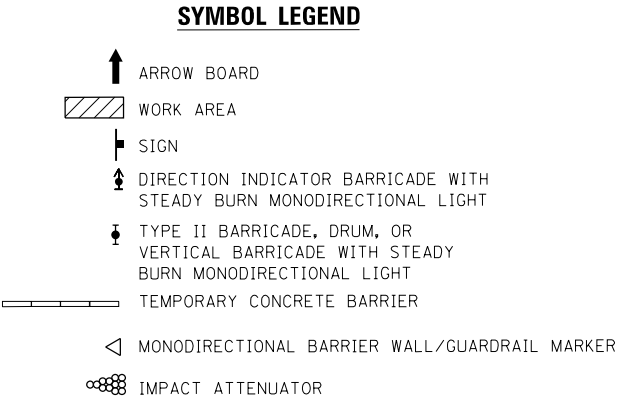


- STAGING NOTES**
1. WORK ZONE SIGNING IN ADVANCE OF STATION 1063+00 SHALL BE AS SHOWN IN IDOT STANDARD DETAIL 701400 (SPECIAL)



USER NAME = WAH	DESIGNED -	REVISED -
PLLOT SCALE = 100.0000' / in.	DRAWN -	REVISED -
PLLOT DATE = 8/21/2012	CHECKED -	REVISED -
	DATE -	REVISED -

STATE OF ILLINOIS
DEPARTMENT OF TRANSPORTATION

MAINTENANCE OF TRAFFIC PLAN - STAGE I
I-57 OVER OLD ROUTE 45 AND ILLINOIS CENTRAL RAILROAD

F.A.I. RTE. 57	SECTION (38-2)HBVR, HVBR-1	COUNTY IROQUOIS	TOTAL SHEETS 146	SHEET NO. 24
CONTRACT NO. 66942				
ILLINOIS FED. AID PROJECT				

SCALE: SHEET NO. 2 OF 4 SHEETS STA. 1013+00 TO STA. 1041+00