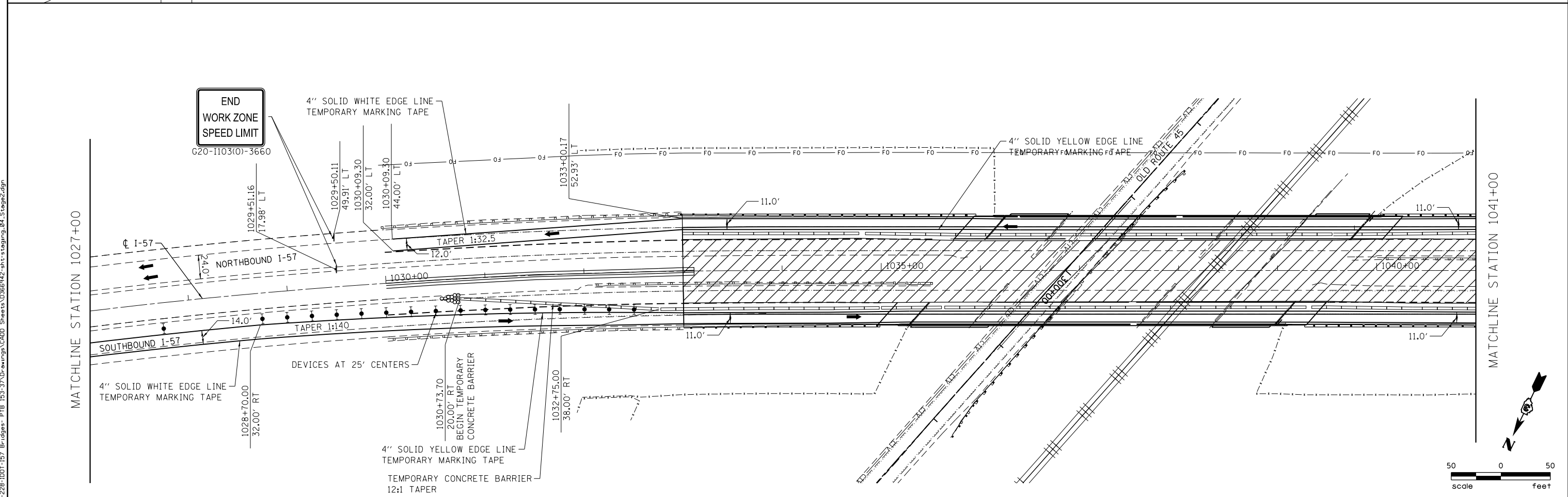
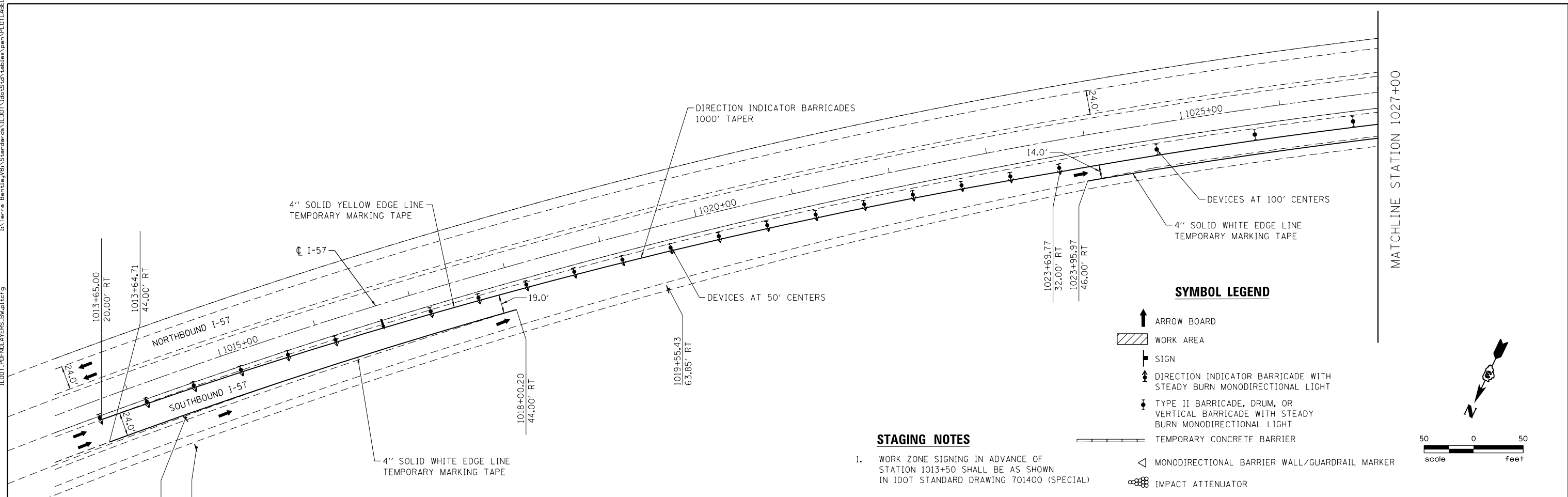


I:\Terra_Bentley\Bentley\Standards\LDOT\Std\Tables\peem\PL0TLABEL.tbl

LDOT_PDFNLAVERS.BWp1.ctb

I:\Projects\99-228-1001-157_Bridges-PTB 153-37\Drawings\CADD Sheets\0366942-sh-t-staging_04_Stage2.dgn



USER NAME = WAH	DESIGNED -	REVISED -
PLOT SCALE = 100.0000' / in.	DRAWN -	REVISED -
PLOT DATE = 8/21/2012	CHECKED -	REVISED -
	DATE -	REVISED -

**STATE OF ILLINOIS
DEPARTMENT OF TRANSPORTATION**

**MAINTENANCE OF TRAFFIC PLAN - STAGE II
I-57 OVER OLD ROUTE 45 AND ILLINOIS CENTRAL RAILROAD**

SCALE: SHEET NO. 3 OF 4 SHEETS STA. 1013+00 TO STA. 1041+00

F.A.I. RTE. 57	SECTION (38-2)HBVR, HVBR-1	COUNTY IROQUOIS	TOTAL SHEETS 146	SHEET NO. 25
CONTRACT NO. 66942				
ILLINOIS FED. AID PROJECT				