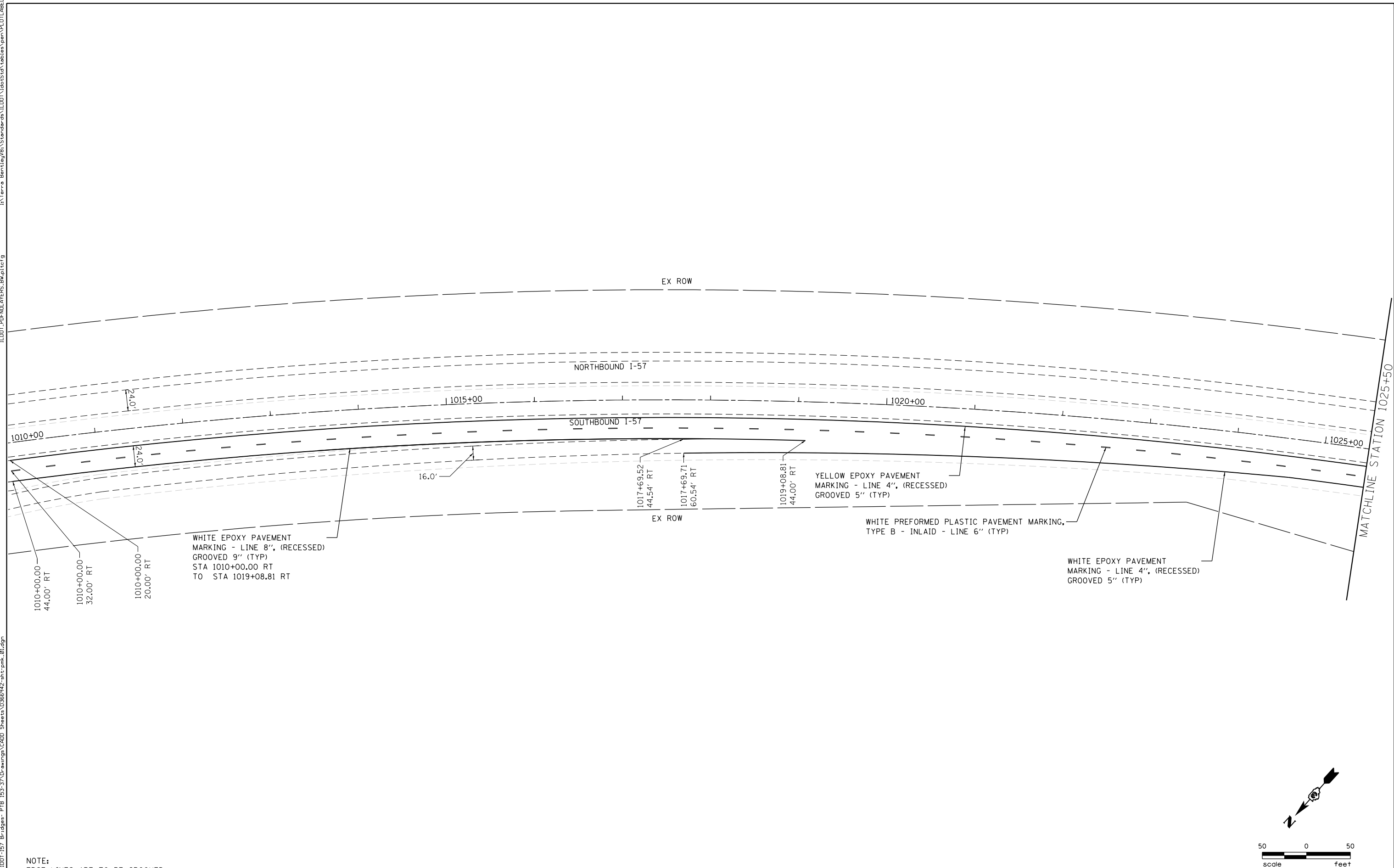


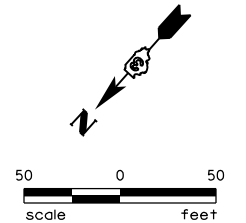
I:\Terra\_Bentley\Bentley\Standards\ILDOT\dot\std\table\plan\plot\label.tbl

ILDOT\_PDFNOLAYERS.BWplot.ctb

I:\Projects\99-228-1001-157\_Bridges-PTB\53-37\Drawings\C400\_Sheets\0366942-shr\pmt\_01.dgn



NOTE:  
EDGE LINES ARE TO BE GROOVED



USER NAME = WAH	DESIGNED -	REVISED -
PLOT SCALE = 100.0000' / in.	DRAWN -	REVISED -
PLOT DATE = 8/24/2012	CHECKED -	REVISED -
	DATE -	REVISED -

**STATE OF ILLINOIS  
DEPARTMENT OF TRANSPORTATION**

**PAVEMENT MARKING PLAN  
I-57 OVER OLD ROUTE 45 AND ILLINOIS CENTRAL RAILROAD**

SCALE: SHEET NO. 1 OF 4 SHEETS STA. 1010+00 TO STA. 1025+50

F.A.I. RTE.	SECTION	COUNTY	TOTAL SHEETS	SHEET NO.
57	(38-2)HBVR, HVBR-1	IRROQUOIS	146	32
CONTRACT NO. 66942				
ILLINOIS FED. AID PROJECT				