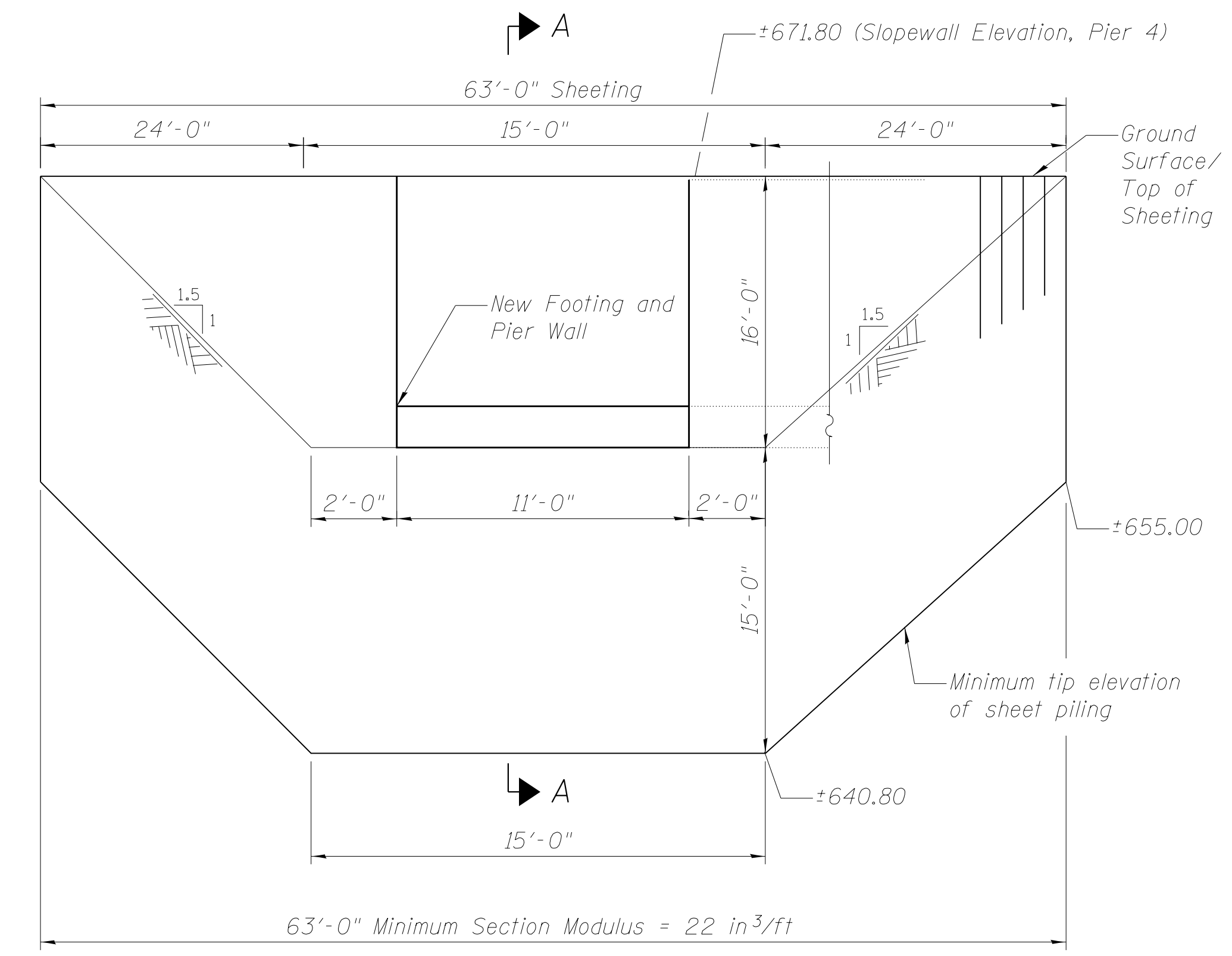
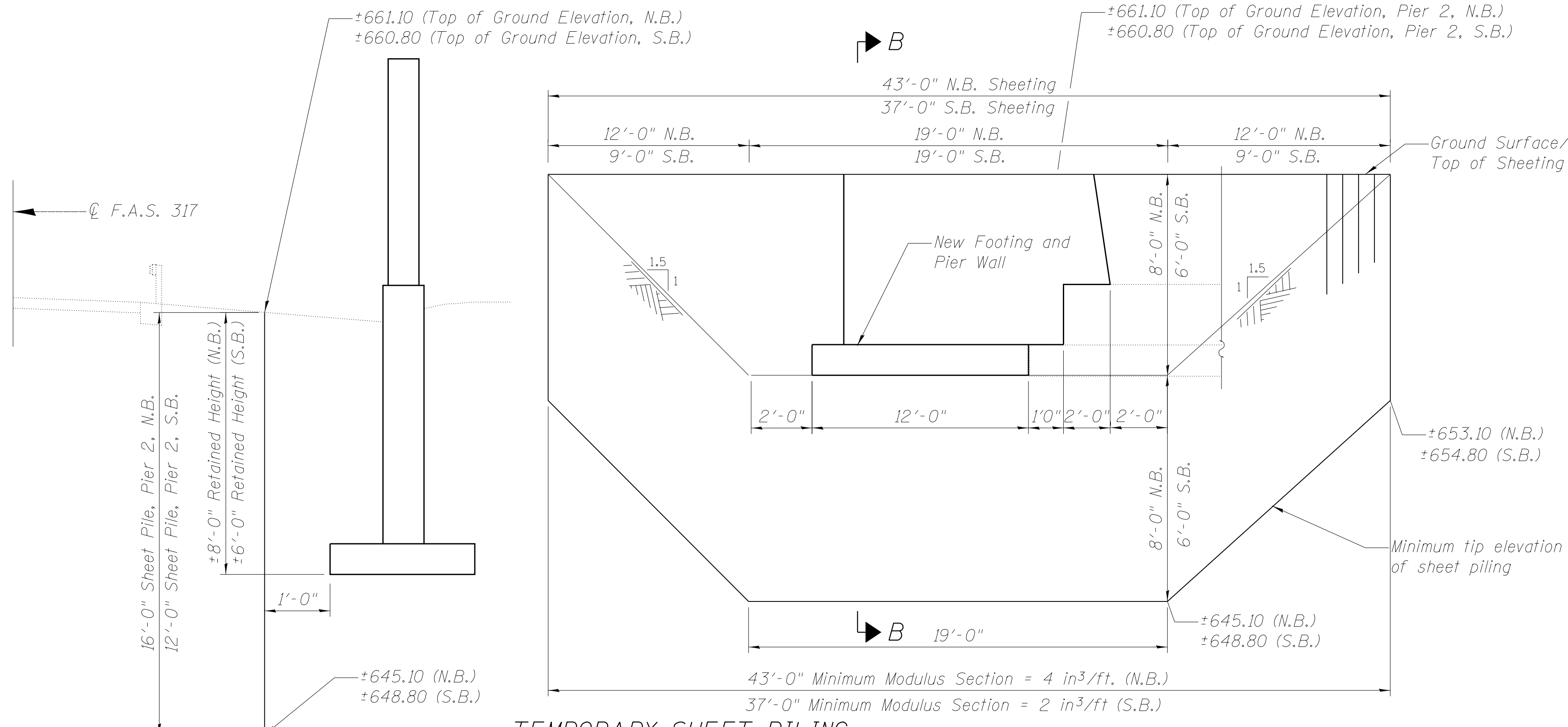


TEMPORARY SHEET PILING ELEVATION-PIER 1
(At Pier 1, both bounds), Not to scale



TEMPORARY SHEET PILING ELEVATION-PIER 4
(At Pier 4, both bounds), Not to scale

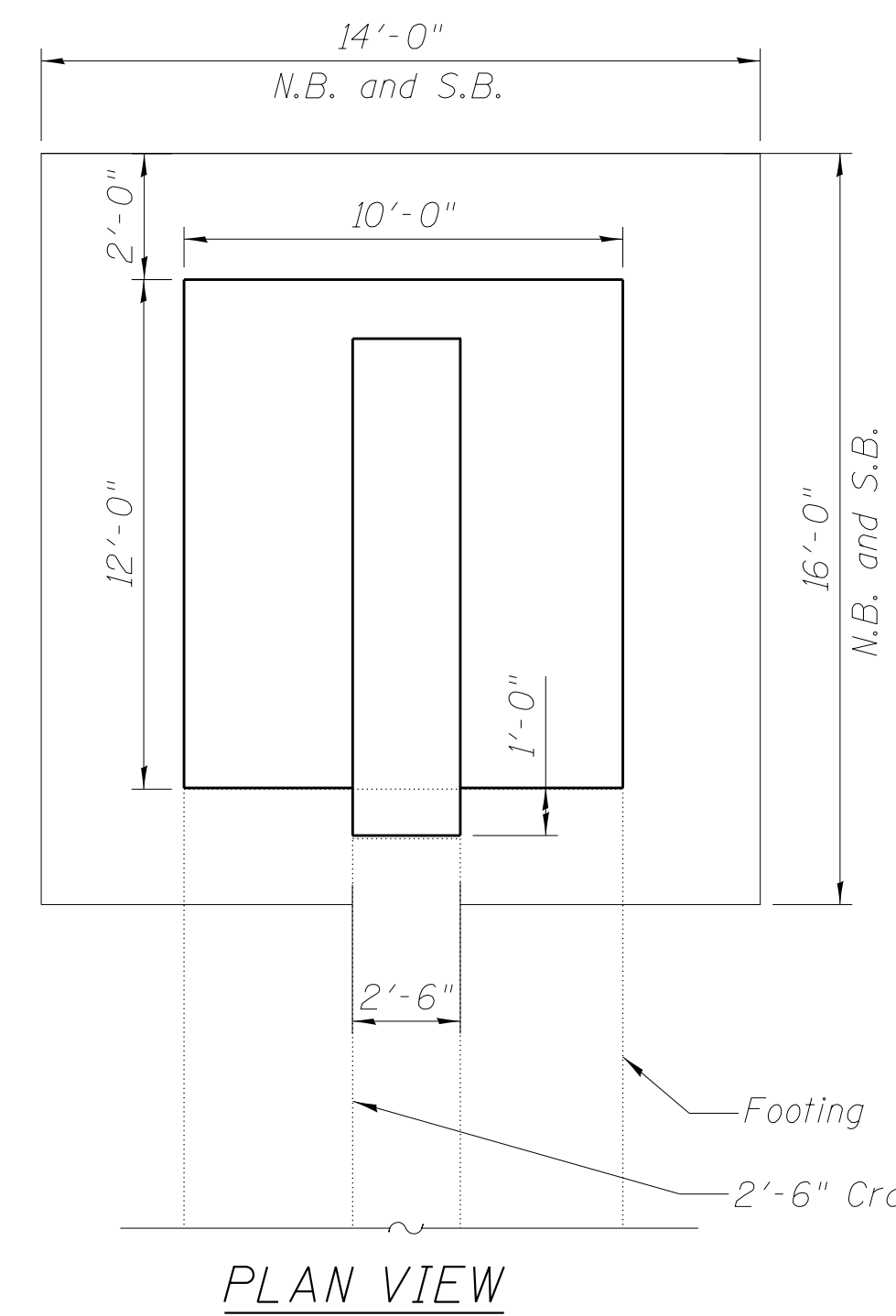
SECTION A-A
(At Pier 1 and 4, both bounds), Not to scale



TEMPORARY SHEET PILING ELEVATION-PIER 2
(At Pier 2), Not to scale

Note: If the Contractor chooses to alter the temporary cantilevered sheet piling design requirements shown on the plans, a design submittal including plan details and calculations will be required for review and acceptance by the Engineer.

SECTION B-B

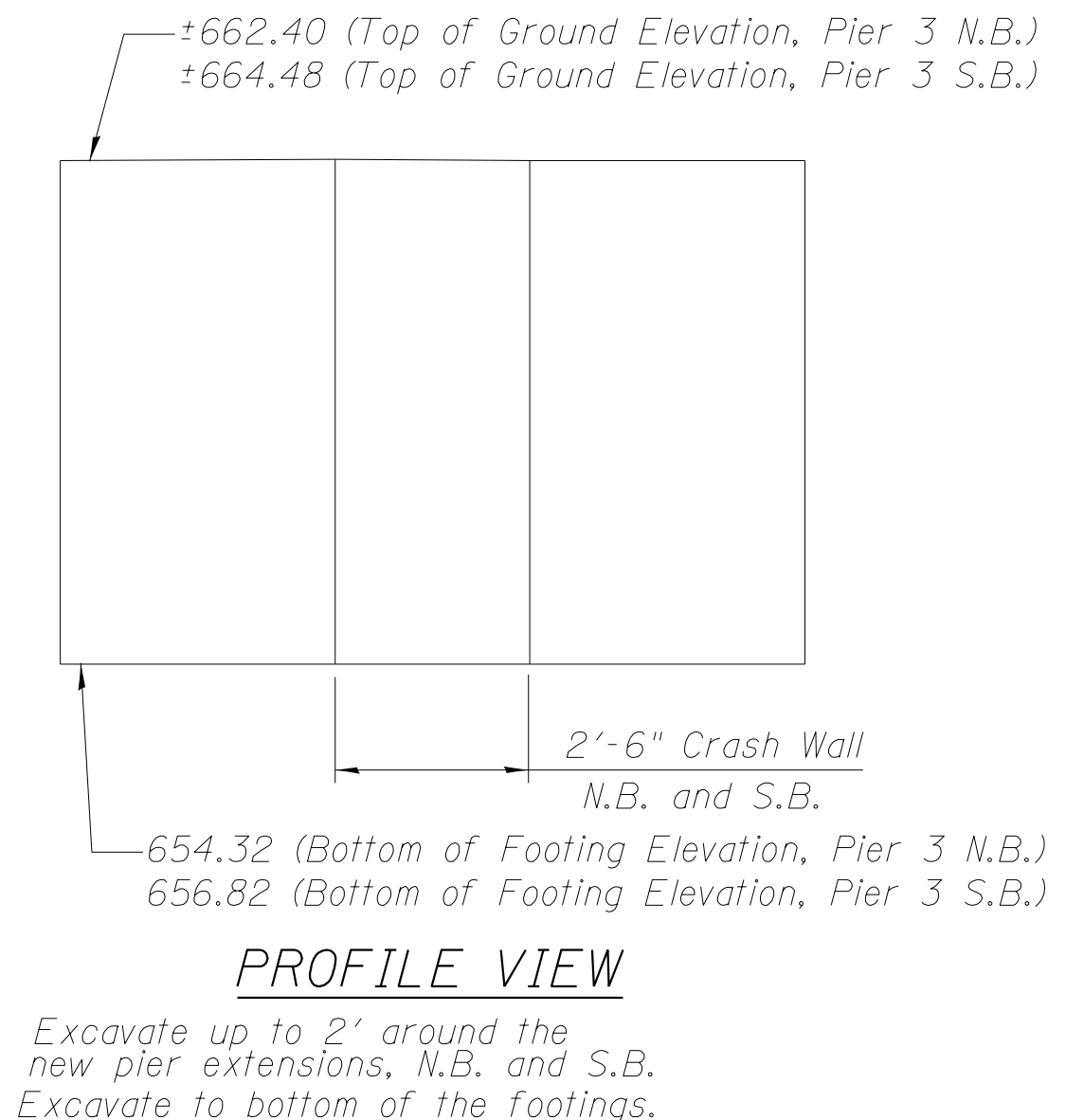


PLAN VIEW

BRACED EXCAVATION
(At Pier 3), Not to scale

BILL OF MATERIAL

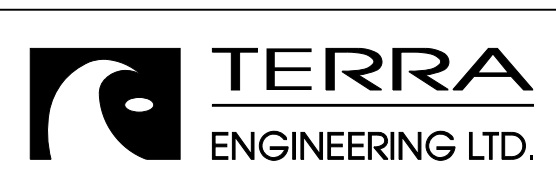
ITEM	UNIT	TOTAL
Temporary Sheet Piling	Sq. Ft.	6408
Braced Excavation	Cu.Yd.	131



PROFILE VIEW

Excavate up to 2' around the new pier extensions, N.B. and S.B. Excavate to bottom of the footings.

M:\1_57_DIVER CNRR & OLD 45\Drawings\CAD\Drawings\Structural\Final Plans\SHTS\0366942-007-Braced Excavation.dgn



USER NAME =	DESIGNED - EA	REVISD
	CHECKED - OY	REVISD
PLOT SCALE =	DRAWN - CM	REVISD
PLOT DATE	CHECKED - JB	REVISD

STATE OF ILLINOIS
DEPARTMENT OF TRANSPORTATION

BRACED EXCAVATION AND TEMPORARY SHEET PILING
STRUCTURE NOS. 038 - 0013 & 0014

F.A.I. RTE.	SECTION	COUNTY	TOTAL SHEETS	SHEET NO.
57	38-2HVB, HVBR-1	IROQUOIS	146	46
CONTRACT NO. 66942				

SHEET NO. S07 OF S71 SHEETS

ILLINOIS FED. AID PROJECT