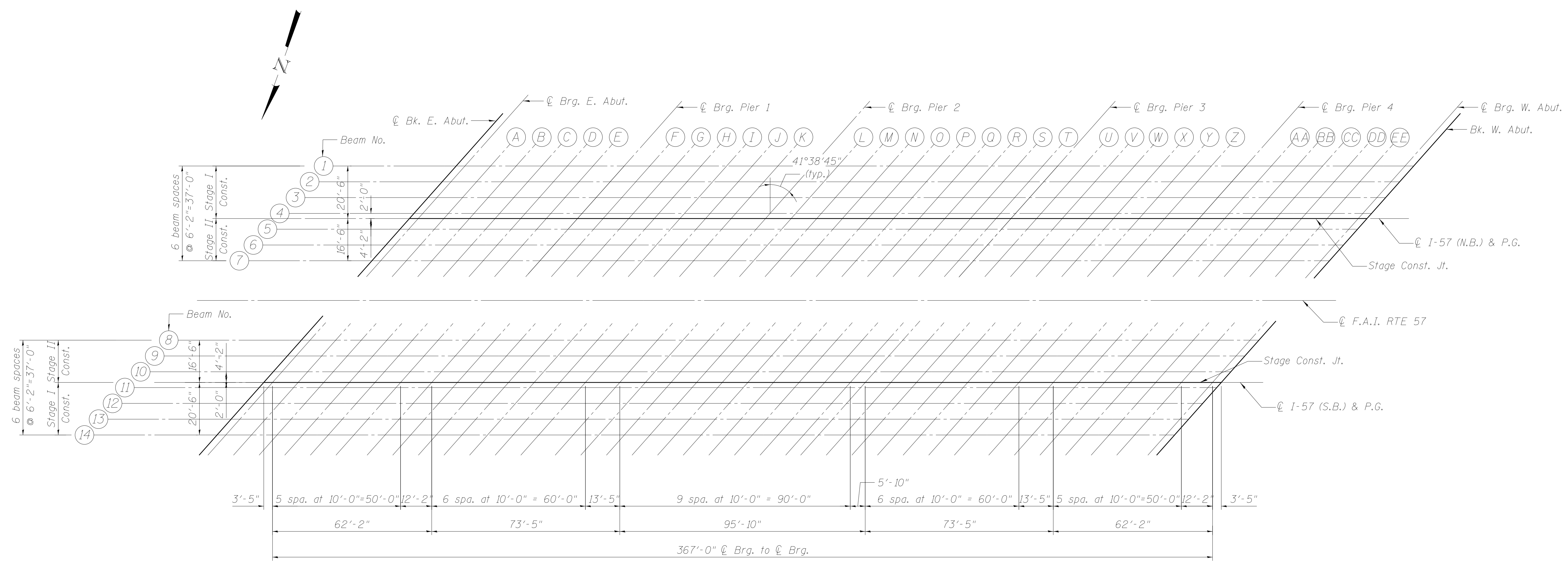
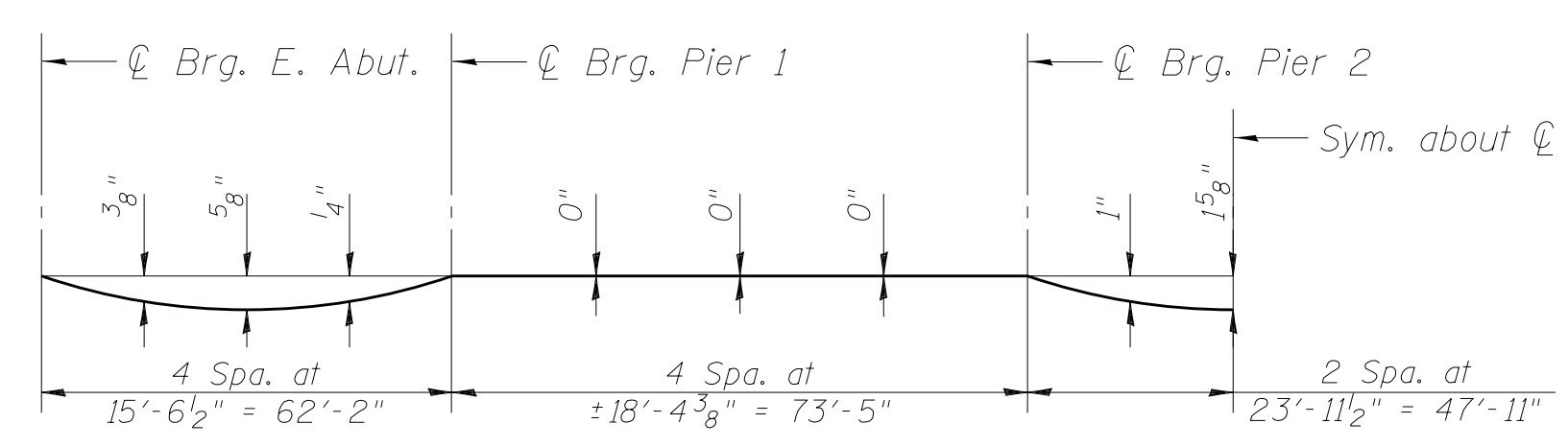


M:\157_DIVER CNRR & OLD 45\Drawings\Structural\Final Plans\SHS\0366942-009-105_L01.dgn

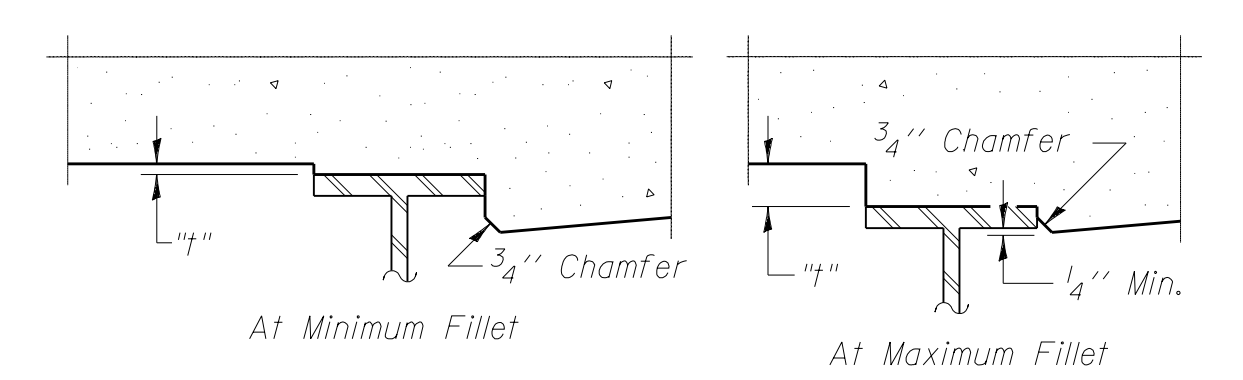


PLAN



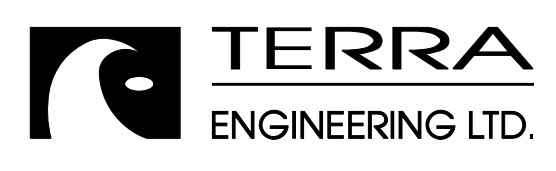
DEAD LOAD DEFLECTION DIAGRAM
 (Includes weight of concrete only)

Note:
 The above deflections are not to be used in the field if the engineer is working from the grade elevations adjusted for dead load deflections as shown on sheets S10 thru S15 of S71.



To determine "f": After all structural steel has been erected, elevations of the top flanges of the beams shall be taken at intervals shown above. These elevations subtracted from the "Theoretical Grade Elevations Adjusted for Dead Load Deflection" shown on sheets S10 thru S15 of S71, minus slab thickness, equals the fillet heights "f" above top flange of beams.

FILLET HEIGHTS



| | | |
|--------------|---------------|---------|
| USER NAME = | DESIGNED - EA | REVISED |
| | CHECKED - OY | REVISED |
| PLOT SCALE = | DRAWN - CM | REVISED |
| PLOT DATE | CHECKED - JB | REVISED |

STATE OF ILLINOIS
DEPARTMENT OF TRANSPORTATION

TOP OF SLAB LOCATION PLAN
STRUCTURE NOS. 038 - 0013 & 0014

SHEET NO. S09 OF S71 SHEETS

| | | | | |
|----------------|-------------------------|-----------------|------------------|--------------------|
| F.A.I. RTE. 57 | SECTION 38-2HVB, HVBR-1 | COUNTY IROQUOIS | TOTAL SHEETS 146 | SHEET NO. 48 |
| | | | | CONTRACT NO. 66942 |

ILLINOIS FED. AID PROJECT