

SOUTH EDGE OF SHOULDER

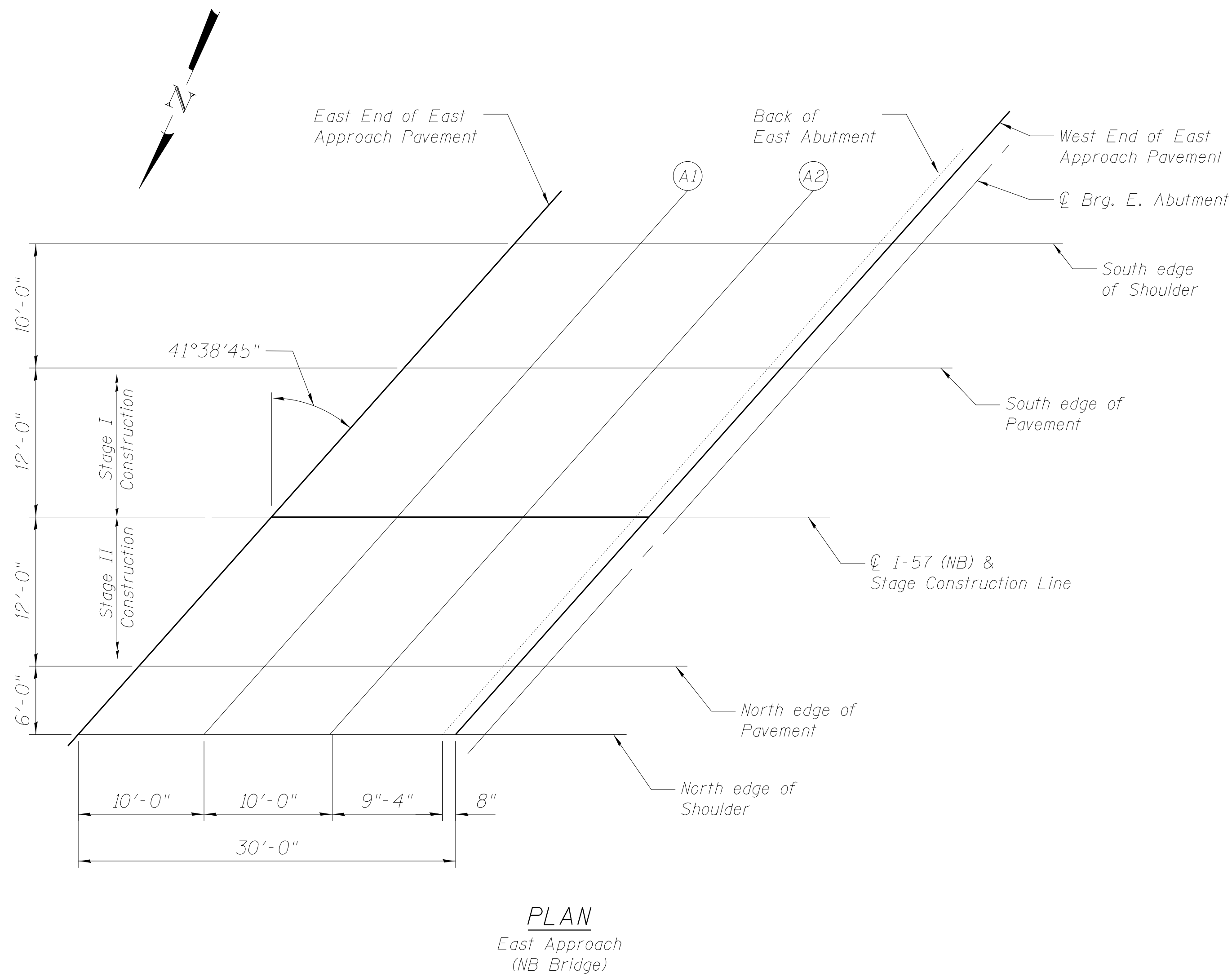
Location	Station	Offset		Theoretical Grade Elevations
E. End East Appr. Pav't	1035+93.15	22.00	Lt	693.16
A1	1036+03.15	22.00	Lt	693.25
A2	1036+13.15	22.00	Lt	693.34
W. End East Appr. Pav't	1036+23.15	22.00	Lt	693.43

SOUTH EDGE OF PAVEMENT

Location	Station	Offset		Theoretical Grade Elevations
E. End East Appr. Pav't	1035+84.26	12.00	Lt	693.28
A1	1035+94.26	12.00	Lt	693.38
A2	1036+04.26	12.00	Lt	693.47
W. End East Appr. Pav't	1036+14.26	12.00	Lt	693.56

℄ I-57, PGL & STAGE CONSTR. LINE

Location	Station	Offset		Theoretical Grade Elevations
E. End East Appr. Pav't	1035+73.59	0.00		693.36
A1	1035+83.59	0.00		693.46
A2	1035+93.59	0.00		693.56
W. End East Appr. Pav't	1036+03.59	0.00		693.65



NORTH EDGE OF PAVEMENT

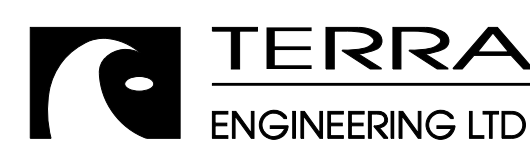
Location	Station	Offset		Theoretical Grade Elevations
E. End East Appr. Pav't	1035+62.92	12.00	Rt	693.06
A1	1035+72.92	12.00	Rt	693.17
A2	1035+82.92	12.00	Rt	693.27
W. End East Appr. Pav't	1035+92.92	12.00	Rt	693.36

NORTH EDGE OF SHOULDER

Location	Station	Offset		Theoretical Grade Elevations
E. End East Appr. Pav't	1035+57.58	18.00	Rt	692.88
A1	1035+67.58	18.00	Rt	692.99
A2	1035+77.58	18.00	Rt	693.09
W. End East Appr. Pav't	1035+87.58	18.00	Rt	693.19

Note: Offsets are measured from Profile Grade Line, not from ℄ of I-57.

M:\1\_57\_OVER CNRR & OLD 45\Drawings\Structural\Final Plans\SHTS\0366942-016-TDS-East appr-NB.dgn



USER NAME =	DESIGNED - EA	REVISED
	CHECKED - OY	REVISED
PLOT SCALE =	DRAWN - CM	REVISED
PLOT DATE	CHECKED - JB	REVISED

**STATE OF ILLINOIS  
DEPARTMENT OF TRANSPORTATION**

**TOP OF EAST APPROACH SLAB ELEVATIONS (NB)  
STRUCTURE NOS. 038 - 0013 & 0014**

F.A.I. RTE.	SECTION	COUNTY	TOTAL SHEETS	SHEET NO.
57	38-2HVB, HVBR-1	IROQUOIS	146	55
CONTRACT NO. 66942				
ILLINOIS FED. AID PROJECT				

SHEET NO. S16 OF S71 SHEETS