

SOUTH EDGE OF SHOULDER

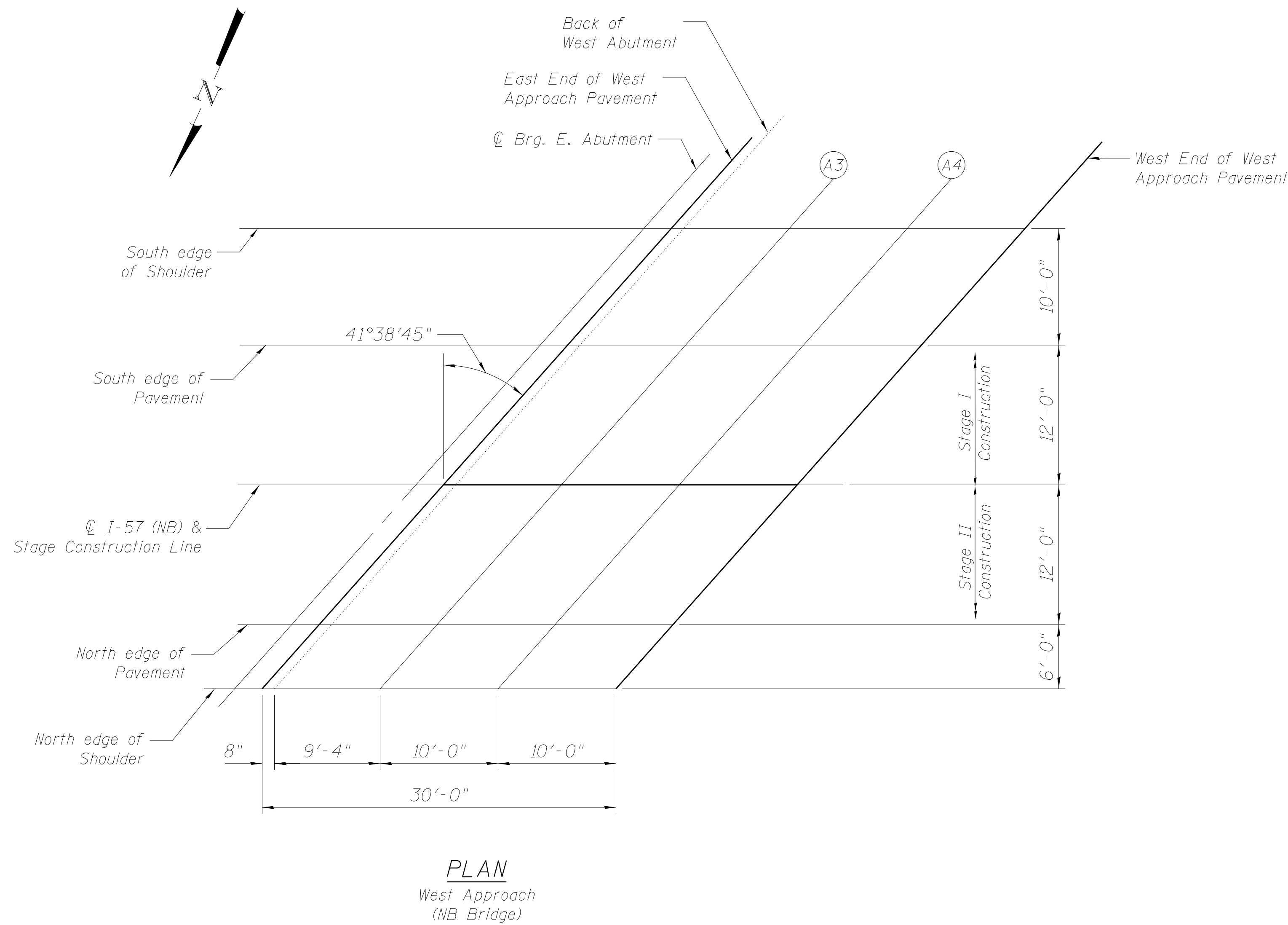
Location	Station	Offset		Theoretical Grade Elevations
E. End West Appr. Pav't	1039+95.65	22.00	Lt	694.05
A3	1040+05.65	22.00	Lt	694.00
A4	1040+15.65	22.00	Lt	693.94
W. End West Appr. Pav't	1040+25.65	22.00	Lt	693.88

SOUTH EDGE OF PAVEMENT

Location	Station	Offset		Theoretical Grade Elevations
E. End West Appr. Pav't	1039+86.76	12.00	Lt	694.30
A3	1039+96.76	12.00	Lt	694.25
A4	1040+06.76	12.00	Lt	694.20
W. End West Appr. Pav't	1040+16.76	12.00	Lt	694.14

℄ I-57. PGL & STAGE CONSTR. LINE

Location	Station	Offset		Theoretical Grade Elevations
E. End West Appr. Pav't	1039+76.09	0.00		694.54
A3	1039+86.09	0.00		694.49
A4	1039+96.09	0.00		694.44
W. End West Appr. Pav't	1040+06.09	0.00		694.39



NORTH EDGE OF PAVEMENT

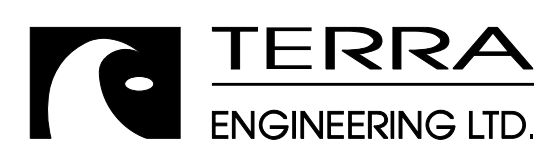
Location	Station	Offset		Theoretical Grade Elevations
E. End West Appr. Pav't	1039+65.42	12.00	Rt	694.39
A3	1039+75.42	12.00	Rt	694.35
A4	1039+85.42	12.00	Rt	694.31
W. End West Appr. Pav't	1039+95.42	12.00	Rt	694.26

NORTH EDGE OF SHOULDER

Location	Station	Offset		Theoretical Grade Elevations
E. End West Appr. Pav't	1039+60.08	18.00	Rt	694.29
A3	1039+70.08	18.00	Rt	694.25
A4	1039+80.08	18.00	Rt	694.21
W. End West Appr. Pav't	1039+90.08	18.00	Rt	694.16

Note: Offsets are measured from Profile Grade Line, not from ℄ of I-57.

M:\157_OVER CNRR & OLD 45\Drawings\Coadd Drawings\Structural\Final Plans\SHTS\0366942-017-105-West app- NB.dgn



USER NAME =	DESIGNED - EA	REVISED
	CHECKED - OY	REVISED
PLOT SCALE =	DRAWN - CM	REVISED
PLOT DATE	CHECKED - JB	REVISED

**STATE OF ILLINOIS
DEPARTMENT OF TRANSPORTATION**

**TOP OF WEST APPROACH SLAB ELEVATIONS (NB)
STRUCTURE NOS. 038 - 0013 & 0014**

SHEET NO. S17 OF S71 SHEETS

F.A.I. RTE.	SECTION	COUNTY	TOTAL SHEETS	SHEET NO.
57	38-2HVB, HVBR-1	IROQUOIS	146	56
			CONTRACT NO. 66942	
ILLINOIS FED. AID PROJECT				