

SOUTH EDGE OF SHOULDER

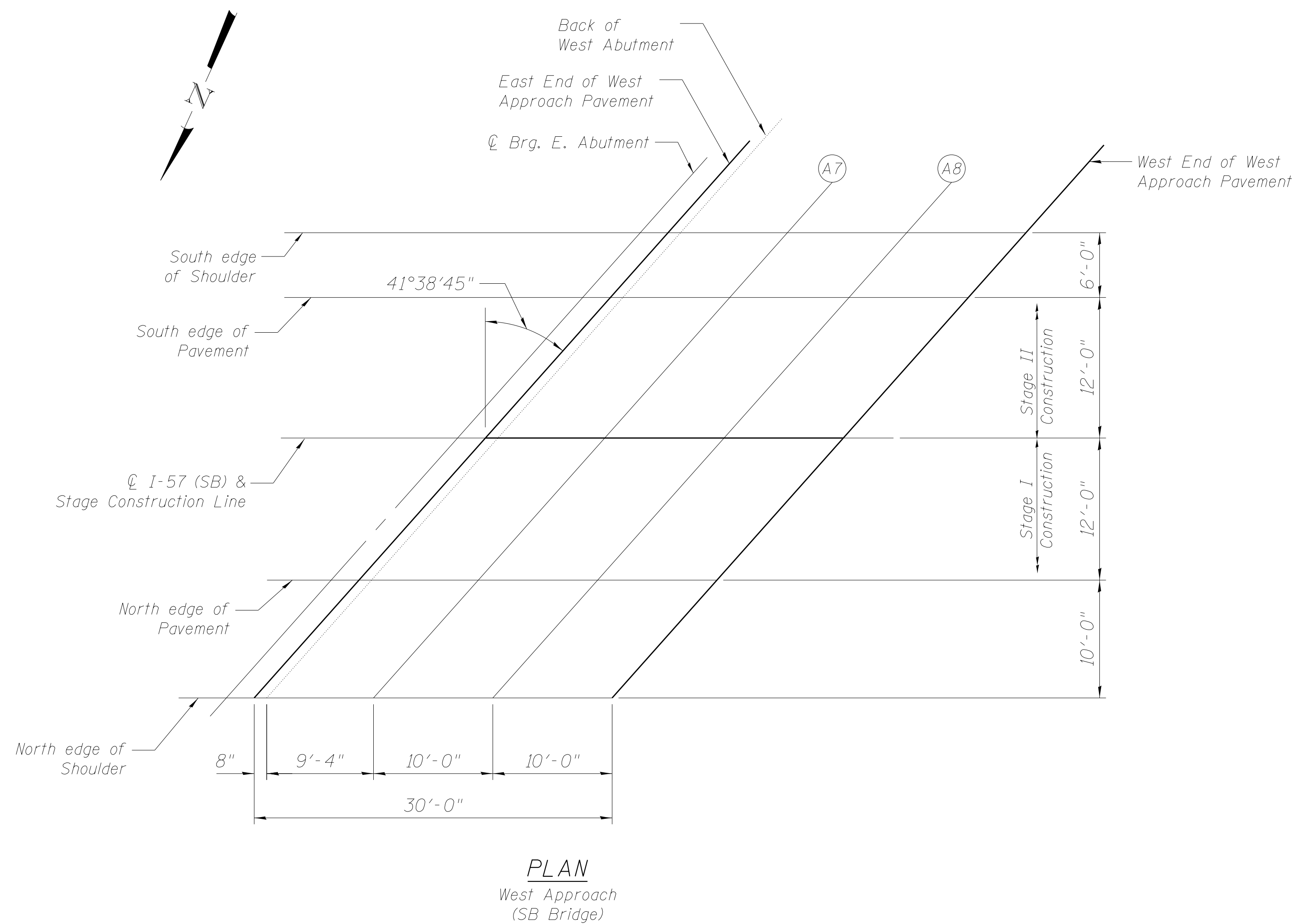
Location	Station	Offset		Theoretical Grade Elevations
E. End West Appr. Pav't	1039+35.18	18.00	Lt	694.37
A7	1039+45.18	18.00	Lt	694.34
A8	1039+55.18	18.00	Lt	694.31
W. End West Appr. Pav't	1039+65.18	18.00	Lt	694.27

SOUTH EDGE OF PAVEMENT

Location	Station	Offset		Theoretical Grade Elevations
E. End West Appr. Pav't	1039+29.84	12.00	Lt	694.51
A7	1039+39.84	12.00	Lt	694.48
A8	1039+49.84	12.00	Lt	694.45
W. End West Appr. Pav't	1039+59.84	12.00	Lt	694.42

☉ I-57, PGL & STAGE CONSTR. LINE

Location	Station	Offset		Theoretical Grade Elevations
E. End West Appr. Pav't	1039+19.17	0.00		694.73
A7	1039+29.17	0.00		694.70
A8	1039+39.17	0.00		694.67
W. End West Appr. Pav't	1039+49.17	0.00		694.64



NORTH EDGE OF PAVEMENT

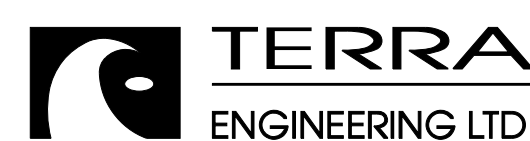
Location	Station	Offset		Theoretical Grade Elevations
E. End West Appr. Pav't	1039+08.50	12.00	Rt	694.56
A7	1039+18.50	12.00	Rt	694.54
A8	1039+28.50	12.00	Rt	694.52
W. End West Appr. Pav't	1039+38.50	12.00	Rt	694.49

NORTH EDGE OF SHOULDER

Location	Station	Offset		Theoretical Grade Elevations
E. End West Appr. Pav't	1038+99.61	22.00	Rt	694.37
A7	1039+09.61	22.00	Rt	694.35
A8	1039+19.61	22.00	Rt	694.33
W. End West Appr. Pav't	1039+29.61	22.00	Rt	694.31

Note: Offsets are measured from Profile Grade Line, not from ☉ of I-57.

M:\157_DRAWING\CNR & OLD 45\Drawings\Structural\Final Plans\BHTS\0366942-019-TOS-West appr-SB.dgn



USER NAME =	DESIGNED - EA	REVISED
	CHECKED - OY	REVISED
PLOT SCALE =	DRAWN - CM	REVISED
PLOT DATE	CHECKED - JB	REVISED

**STATE OF ILLINOIS
DEPARTMENT OF TRANSPORTATION**

**TOP OF WEST APPROACH SLAB ELEVATIONS (SB)
STRUCTURE NOS. 038 - 0013 & 0014**

F.A.I. RTE.	SECTION	COUNTY	TOTAL SHEETS	SHEET NO.
57	38-2HWB, HVBR-1	IROQUOIS	146	58
			CONTRACT NO. 66942	
			ILLINOIS FED. AID PROJECT	

SHEET NO. S19 OF S71 SHEETS