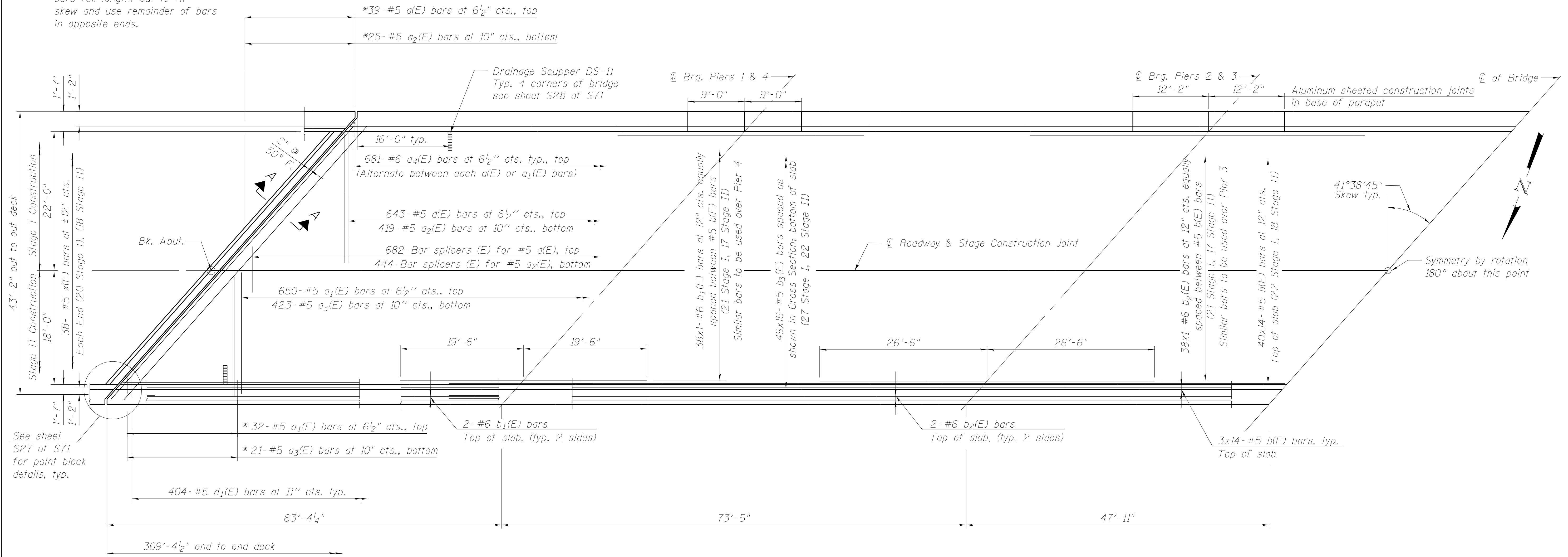
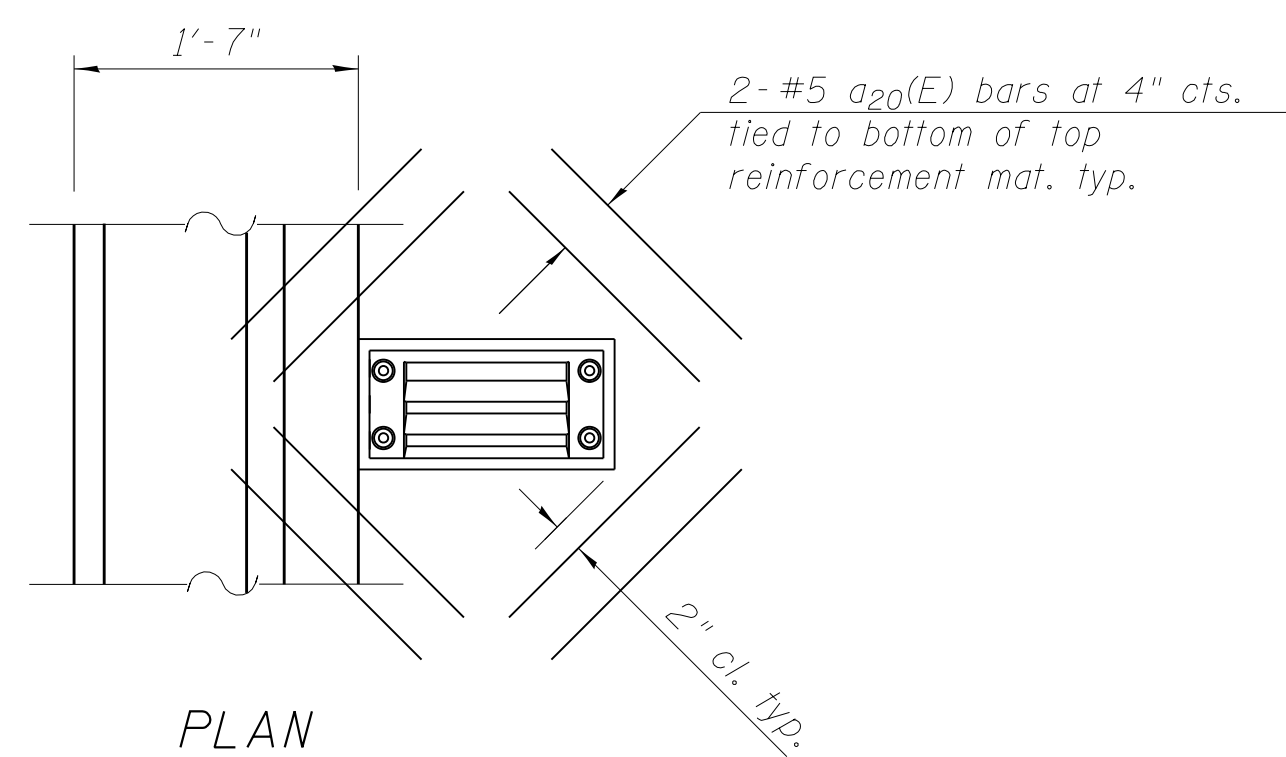


* Order a(E), a₁(E), a₂(E), and a₃(E) bars full length. Cut to fit skew and use remainder of bars in opposite ends.



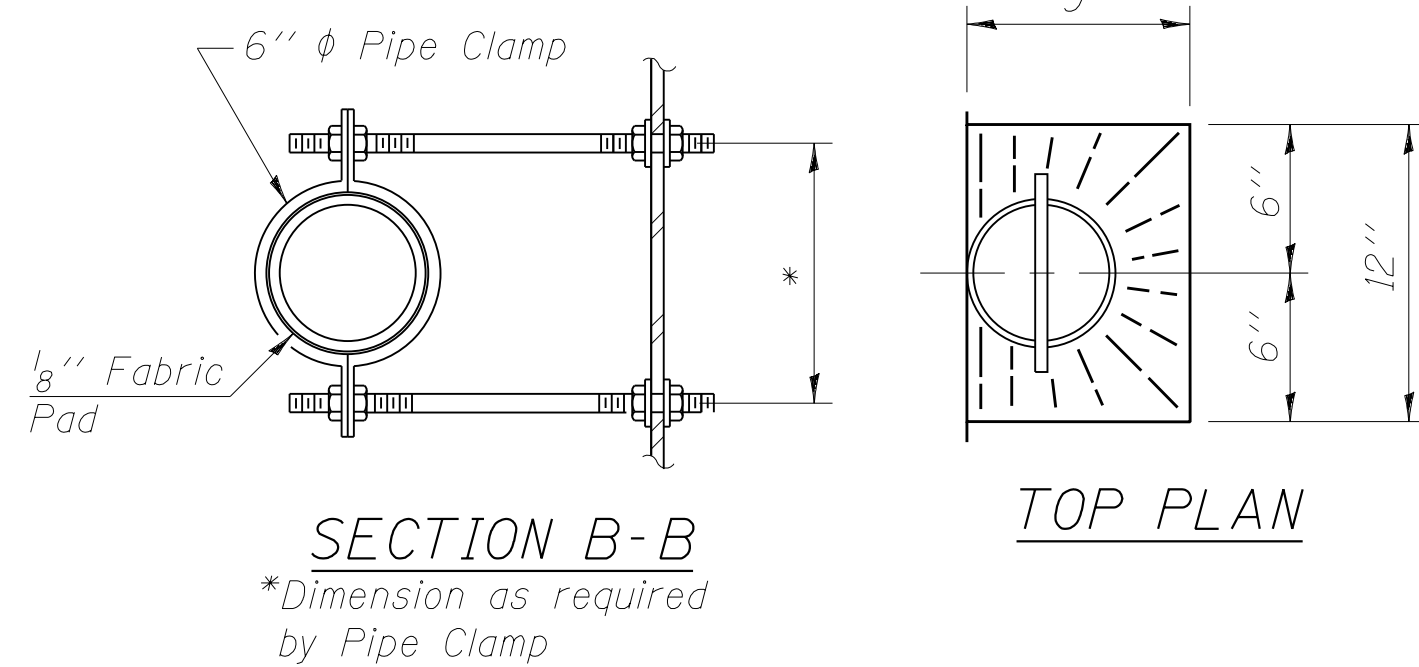
HALF PLAN

N.B. Shown
S.B. Similar

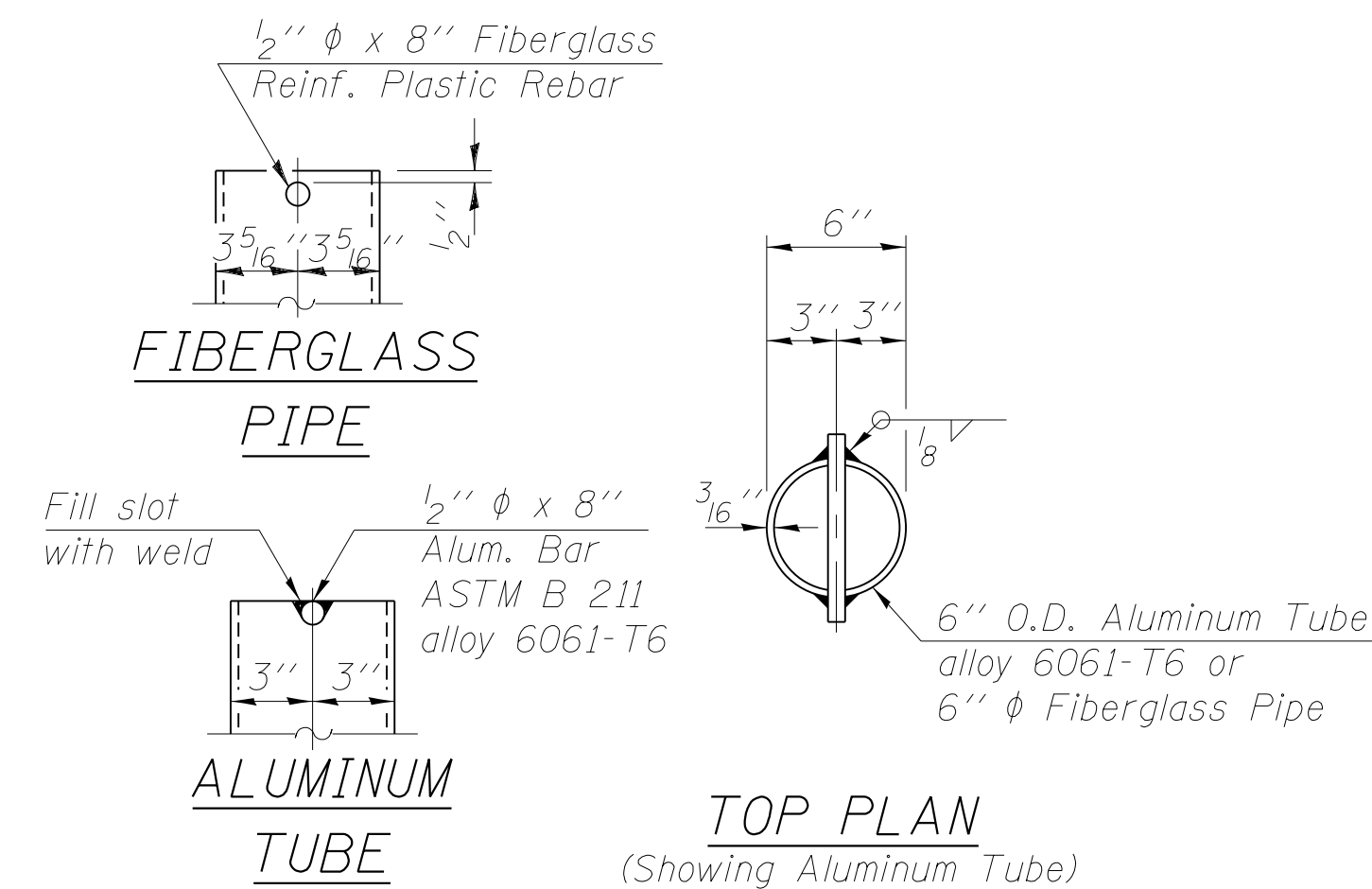


Note:
Cut longitudinal reinforcement to clear drainage scuppers.

SCUPPER DETAILS



FLOOR DRAIN DETAILS



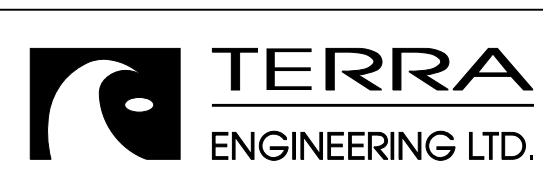
Notes:
Drains shall be located clear of all diaphragms.
The exterior surfaces of the floor drains shall be painted with the finish coat as specified in the General Note. The exterior surfaces of the drains shall be cleaned according to the Society of Protective Coating's Spec. SSPC-SP1 prior to painting. See Section 506.
Fiberglass pipe shall conform to ASTM D 2996, with short-time rupture strength hoop tensile stress of 30,000 p.s.i. minimum.
Galvanize clamping device according to AASHTO M232. Cost of Clamping device and inserts is included with Floor Drains.

MINIMUM BAR LAP

(Slab)
#5 bar = 2'-6"
#6 bar = 3'-0"

Notes:
See sheet S23 of S71 for superstructure Bill of Material.
See sheet S23 of S71 for Section A-A.
Bars indicated thus 40 x 5-#5 etc. indicates 40 lines of bars with 5 lengths per line.
See sheet S22 of S71 for parapet reinforcement.
For deck cross section see sheet S21 of S71.
See sheet S1 of S71 for location of Floor Drains.
Dimensions are based on a Rolled Rail Strip Seal Joint.
If the Contractor elects to use the Welded Rail Strip Seal Joint, deck dimensions may require adjustments to satisfy the details on Base Sheet EJ-SSJ.
For bar splicer details, see sheet S64 of S71.

M:\1 E7_OVER CNRR & ILLI 45\0-Drawings\CADD Drawings\Structural\Final Plans\SHTS\0366942-020-super.dgn



USER NAME =	DESIGNED - EA	REVISED
	CHECKED - OY	REVISED
PLOT SCALE =	DRAWN - CM	REVISED
PLOT DATE	CHECKED - JB	REVISED

**STATE OF ILLINOIS
DEPARTMENT OF TRANSPORTATION**

**SUPERSTRUCTURE PLAN
STRUCTURE NOS. 038 - 0013 & 0014**

SHEET NO. S20 OF S71 SHEETS

F.A.I. RTE.	SECTION	COUNTY	TOTAL SHEETS	SHEET NO.
57	38-2HVB, HVBR-1	IROQUOIS	146	59
CONTRACT NO. 66942				

ILLINOIS FED. AID PROJECT