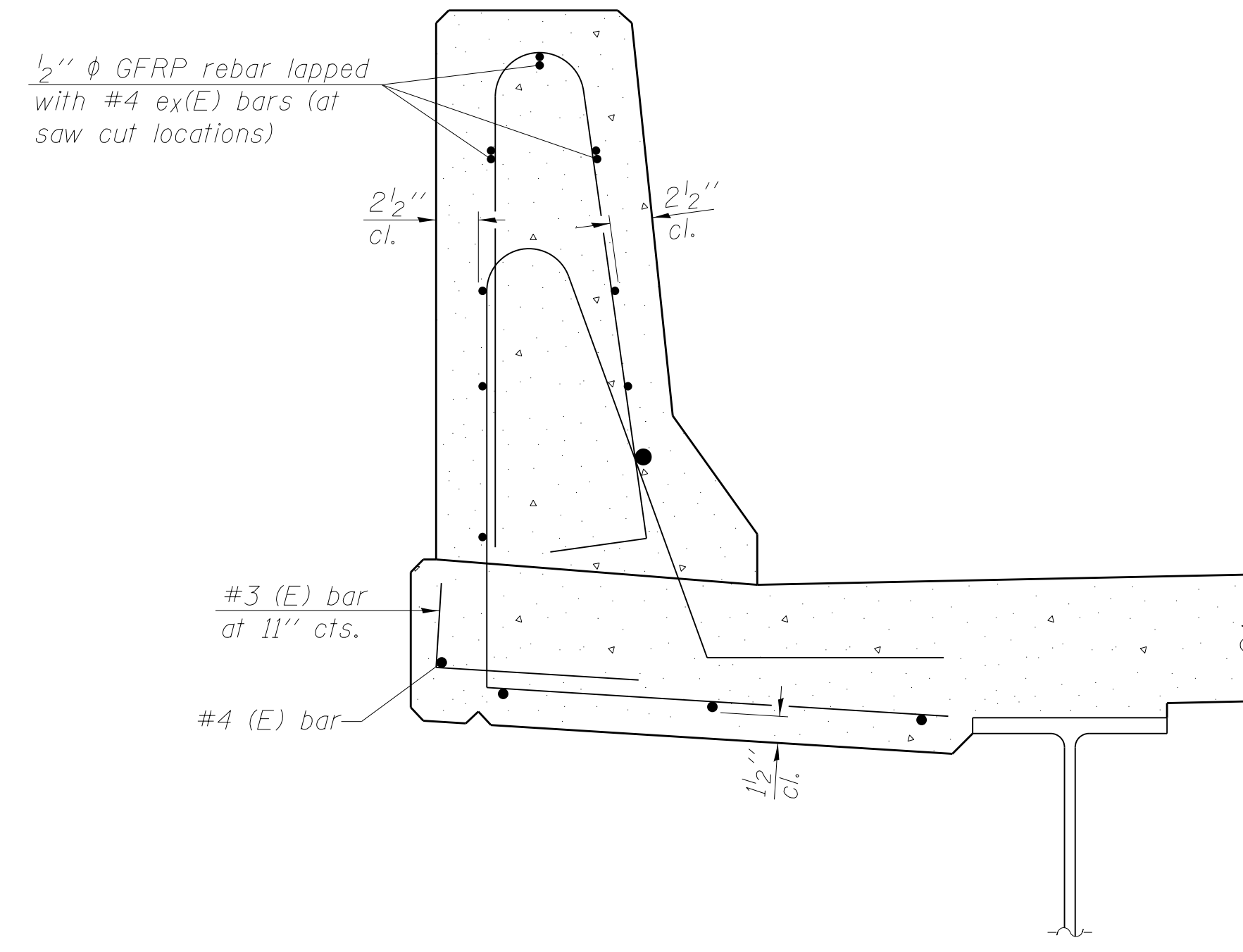


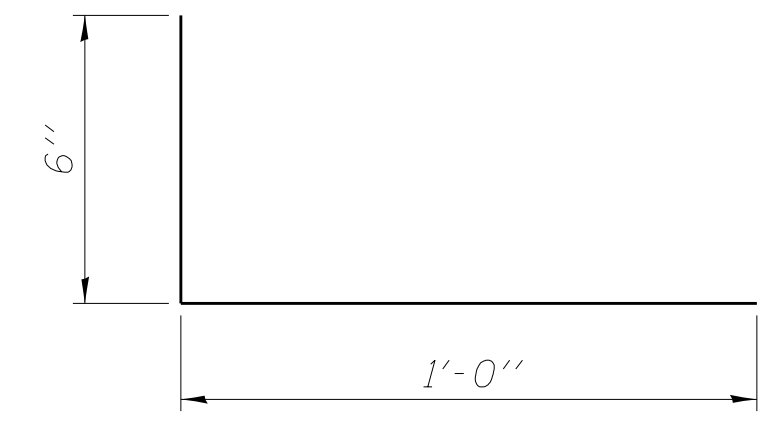
SECTION
(Showing dimensions)

* See Superstructure Details.

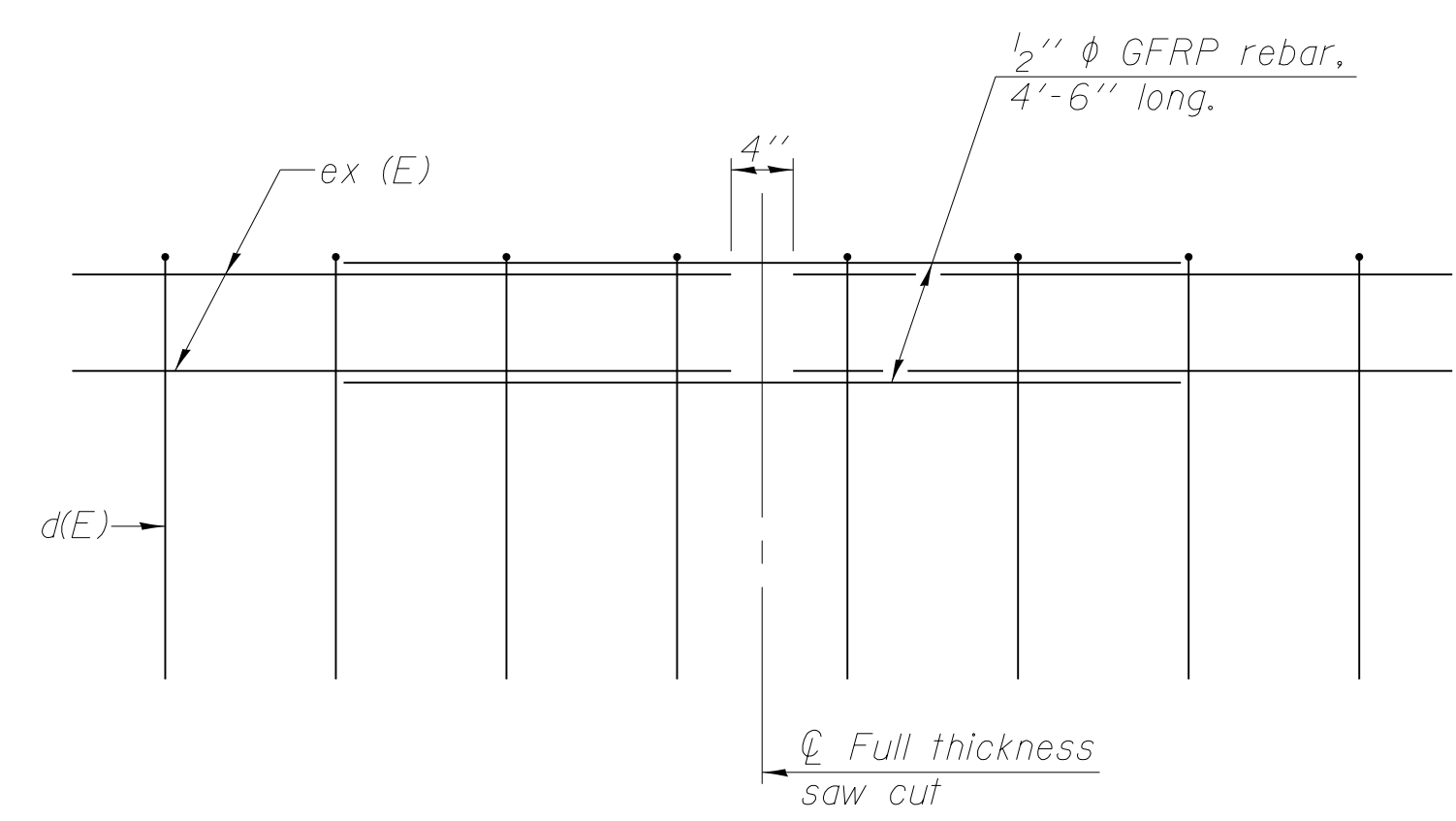


SECTION
(Showing reinforcement clearances for slip forming and additional reinforcement bars)

GENERAL NOTES
All dimensions shall remain the same as shown on superstructure details, except dimensions A and B which are to be revised as shown to provide additional clearance. Additional concrete needed to revise dimension A and B = 0.0165 cu. yds./ft. of parapet.
Place aluminum sheet in curb portion at and near piers. Full thickness saw cut at all joint locations in lieu of cork joint filler.
Steel superstructure shown. Other superstructure types similar.



#3 (E) BAR

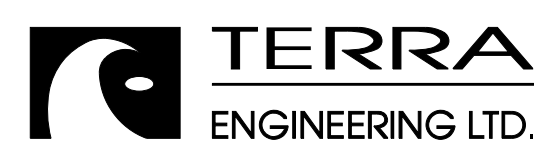


GFRP REBAR STIFFENING DETAIL
(Place as shown in parapet section at each parapet joint location.)

M:\1_57_DRAWING\CNR & BLDG_45\Drawings\Structural\Final Plans\SHTS\0366942-024-Parapet-Slipforming.dgn

SFP-34

1-27-12



| | | |
|--------------|---------------|---------|
| USER NAME = | DESIGNED - EA | REVISED |
| | CHECKED - OY | REVISED |
| PLOT SCALE = | DRAWN - CM | REVISED |
| PLOT DATE | CHECKED - JB | REVISED |

**STATE OF ILLINOIS
DEPARTMENT OF TRANSPORTATION**

**CONCRETE PARAPET SLIPFORMING OPTION
STRUCTURE NOS. 038 - 0013 & 0014**

| F.A.I. RTE. | SECTION | COUNTY | TOTAL SHEETS | SHEET NO. |
|---------------------------|-----------------|----------|--------------|--------------------|
| 57 | 38-2HWB, HVBR-1 | IROQUOIS | 146 | 63 |
| | | | | CONTRACT NO. 66942 |
| ILLINOIS FED. AID PROJECT | | | | |

SHEET NO. S24 OF S71 SHEETS