

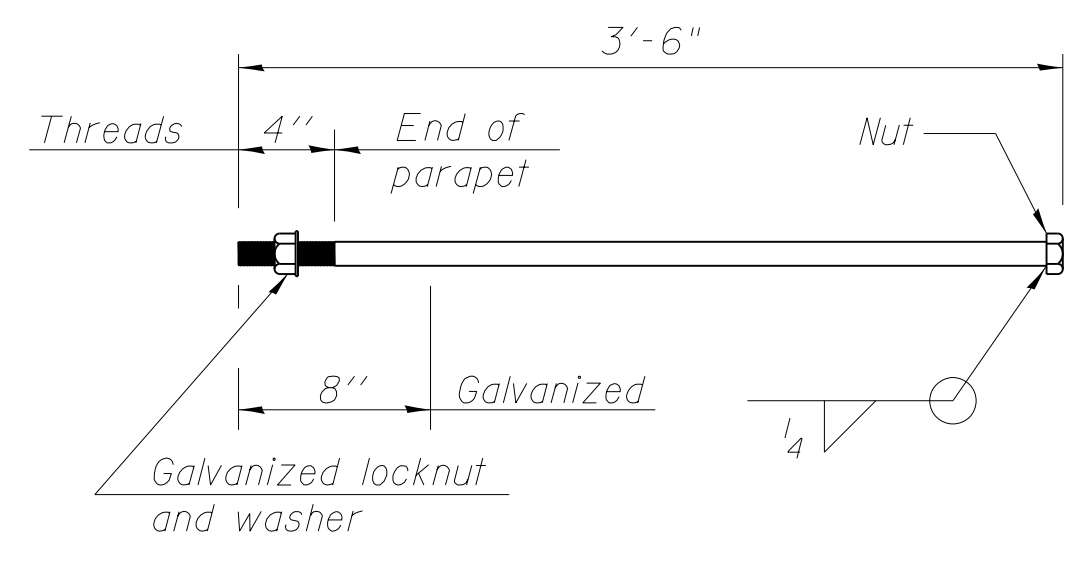
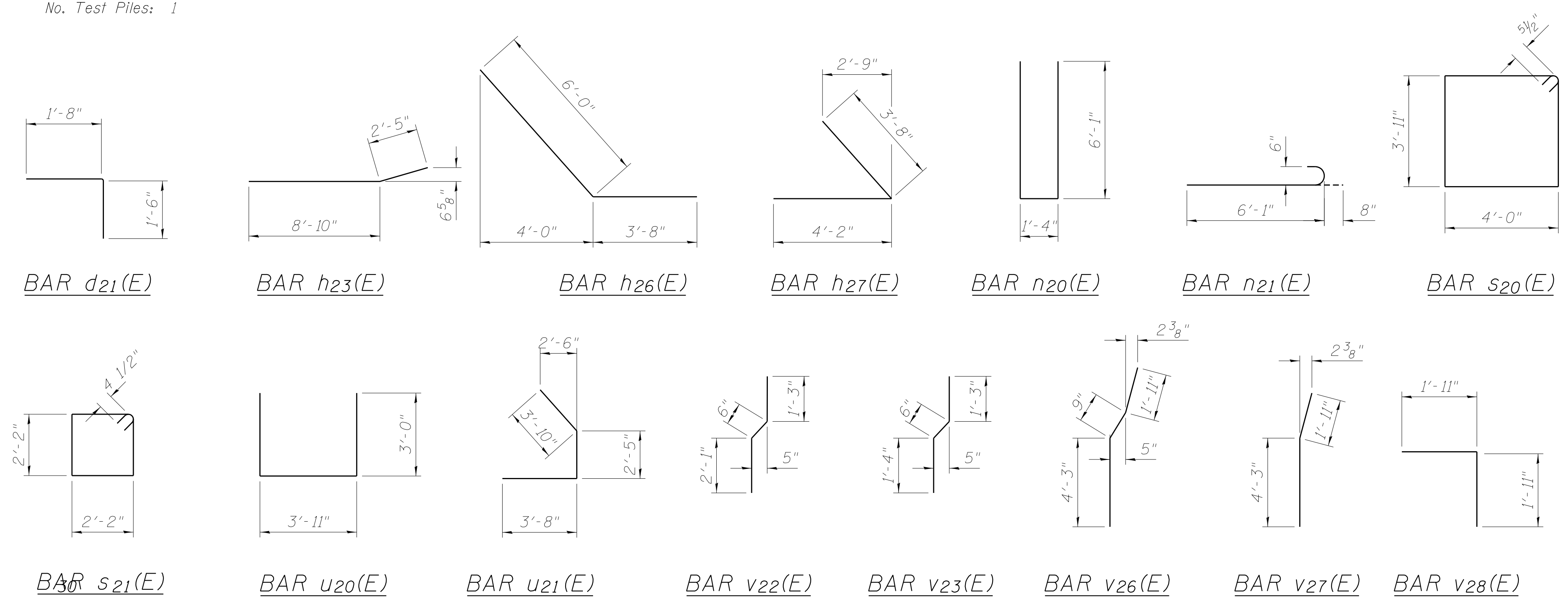
**ABUTMENT
BILL OF MATERIAL**

Bar	No.	Size	Length	Shape
d ₂₀ (E)	45	#5	2'-3"	—
d ₂₁ (E)	45	#5	3'-2"	└
h ₂₀ (E)	2	#5	31'-3"	—
h ₂₁ (E)	4	#6	29'-2"	—
h ₂₂ (E)	9	#4	12'-0"	—
h ₂₃ (E)	14	#4	11'-2"	—
h ₂₄ (E)	6	#5	6'-6"	—
h ₂₅ (E)	6	#5	8'-6"	—
h ₂₆ (E)	10	#5	7'-8"	—
h ₂₇ (E)	10	#5	7'-10"	—
h ₂₈ (E)	2	#5	24'-2"	—
h ₂₉ (E)	4	#6	23'-0"	—
h ₂₃₀ (E)	9	#4	10'-2"	—
h ₂₃₁ (E)	4	#4	11'-2"	—
n ₂₀ (E)	18	#6	13'-6"	—
n ₂₁ (E)	12	#6	6'-9"	—
p ₂₀ (E)	6	#7	7'-7"	—
p ₂₁ (E)	9	#7	8'-7"	—
p ₂₂ (E)	9	#7	12'-0"	—
p ₂₃ (E)	6	#7	11'-6"	—
p ₂₄ (E)	3	#7	31'-2"	—
p ₂₅ (E)	3	#7	25'-10"	—
p ₂₆ (E)	3	#7	3'-8"	—
s ₂₀ (E)	17	#5	16'-10"	—
s ₂₁ (E)	35	#4	9'-0 1/2"	—
u ₂₀ (E)	4	#6	9'-11"	—
u ₂₁ (E)	4	#6	9'-11"	—
v ₂₀ (E)	13	#4	6'-6"	—
v ₂₁ (E)	13	#4	5'-2"	—
v ₂₂ (E)	13	#4	3'-10"	—
v ₂₃ (E)	44	#4	3'-1"	—
v ₂₄ (E)	44	#4	2'-9"	—
v ₂₅ (E)	24	#6	6'-10"	—
v ₂₆ (E)	18	#6	6'-11"	—
v ₂₇ (E)	6	#6	6'-3"	—
v ₂₈ (E)	53	#4	3'-10"	└
Structure Excavation	Cu. Yd.		93	
Concrete Structures	Cu. Yd.		41.6	
Reinforcement Bars, Epoxy Coated	Pound		4240	
Furnishing Steel Piles HP12x53	Foot		172	
Driving Piles	Foot		172	
Test Pile Steel HP12x53	Each		1	
Concrete Encasement	Cu. Yd.		1.7	
Concrete Sealer	Sq. Ft.		461	

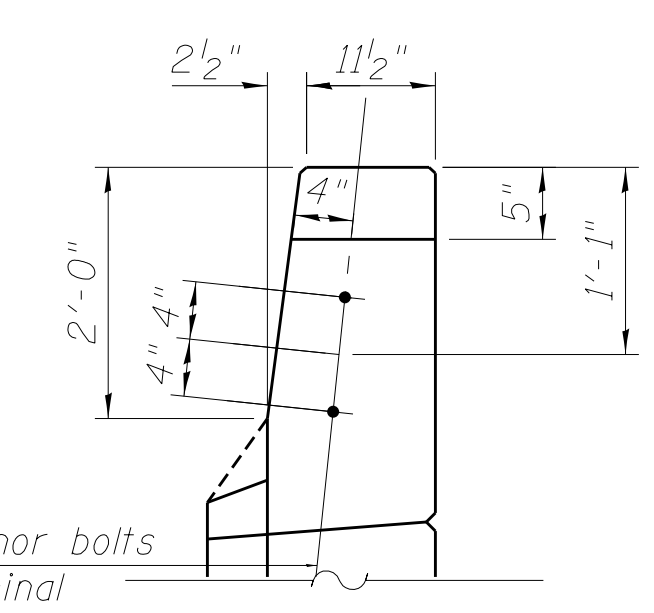
PILE DATA

Type: HP 12X53
 Nominal Required Bearing: 359 kips
 Allowable Resistance Available: 120 kips
 Est. Length: 43 Ft.
 No. Production Piles: 4
 No. Test Piles: 1

PILE LAYOUT



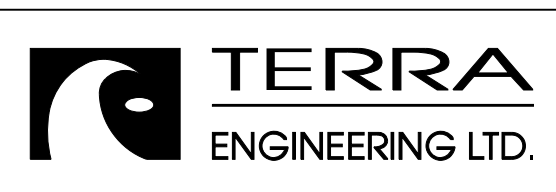
1"φ ANCHOR BOLT



1"φ Anchor bolts
 Type 5 terminal connections only.

For details of Bar Splicers, see sheet S64 of S71.
 For details of piles and Concrete Encasement, see sheet S65 of S71.

M:\1_57_OVER CNRR & ILLI 45\Drawings\Structural\Final Plans\SHTS\0366942-040-W-Abutment-NB.dwg



USER NAME =	DESIGNED - EA	REVISED
	CHECKED - OY	REVISED
PLOT SCALE =	DRAWN - CM	REVISED
PLOT DATE	CHECKED - JB	REVISED

**STATE OF ILLINOIS
DEPARTMENT OF TRANSPORTATION**

**WEST ABUTMENT - NORTHBOUND SHEET 2
STRUCTURE NOS. 038 - 0013 & 0014**

SHEET NO. S40 OF S71 SHEETS

F.A.I. RTE.	SECTION	COUNTY	TOTAL SHEETS	SHEET NO.
57	38-2HVB, HVBR-1	IROQUOIS	146	79
				CONTRACT NO. 66942
ILLINOIS FED. AID PROJECT				